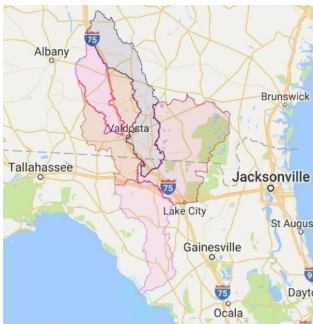




WWALS Watershed Coalition, Inc



the WATERKEEPER® Alliance
Member for the Suwannee,
Withlacoochee and Alapaha Rivers



- Upper Suwannee River HUC 03110201
- Withlacoochee River HUC 03110203
- Alapaha River HUC 03110202
- Little River HUC 03110204
- Lower Suwannee River HUC 03110205
- Suwannee River Estuary

WWALS Watershed Coalition advocates for conservation and stewardship of the Withlacoochee, Willacoochee, Alapaha, Little, and Suwannee River watersheds in south Georgia and north Florida through education, awareness, environmental monitoring, and citizen activities.



September 21, 2017

To: Georgia Department of
Natural Resources
Environmental Protection Division
Watershed Protection Branch
Attn: James A. (Jac) Capp
Branch Chief
2 Martin Luther King, Jr. Drive
Atlanta, Georgia 30334
404-463-4911
James.Capp@dnr.state.ga.us

Lisa Myler
District Manager
Southwest District
GA DNR EPD WPD
(404) 463-1511
lisa.myler@dnr.ga.gov

Joe Freeman
GA DNR EPD WPD
joe.freeman@dnr.state.ga.us
rangerhotline@dnr.ga.gov

John Peconom
Environmental Project Manager
Office of Energy Projects
Federal Energy Regulatory
Commission
888 First Street, N.E.
Washington, D.C. 20426
John.Peconom@ferc.gov

Cc: Commander, U.S.A.C.E.,
Savannah District
Attn: Mr. Terry C. Kobs
1104 N. Westover Blvd. Unit 9
Albany, Georgia 31707
(229) 430-8566
terry.c.kobs@usace.army.mil

John Heneghan,
Director,
Southern Region,
PHMSA,
John.Heneghan@dot.gov,
404-832-1140

Arthur Buff,
PHMSA CLS,
Arthur.buff@dot.gov,
(404) 832-1155

FERC Docket Number: CP15-17

USACE Application Numbers: SAS-2013-00942 (GA),
SAJ-2013-03030 (FL), SAM-2014-00655-JSC (AL)

Applicant: Sabal Trail Transmission, LLC, Attn Mr. George McLachlan;

Re: Sinkhole on Sabal Trail at Okapilco Creek, Coffee Road, Brooks County, Georgia

Joe Freeman, et al.,

There is a sinkhole on Sabal Trail's pipeline off of Coffee Road, between Little Creek and Okapilco Creek, in Brooks County, Georgia.



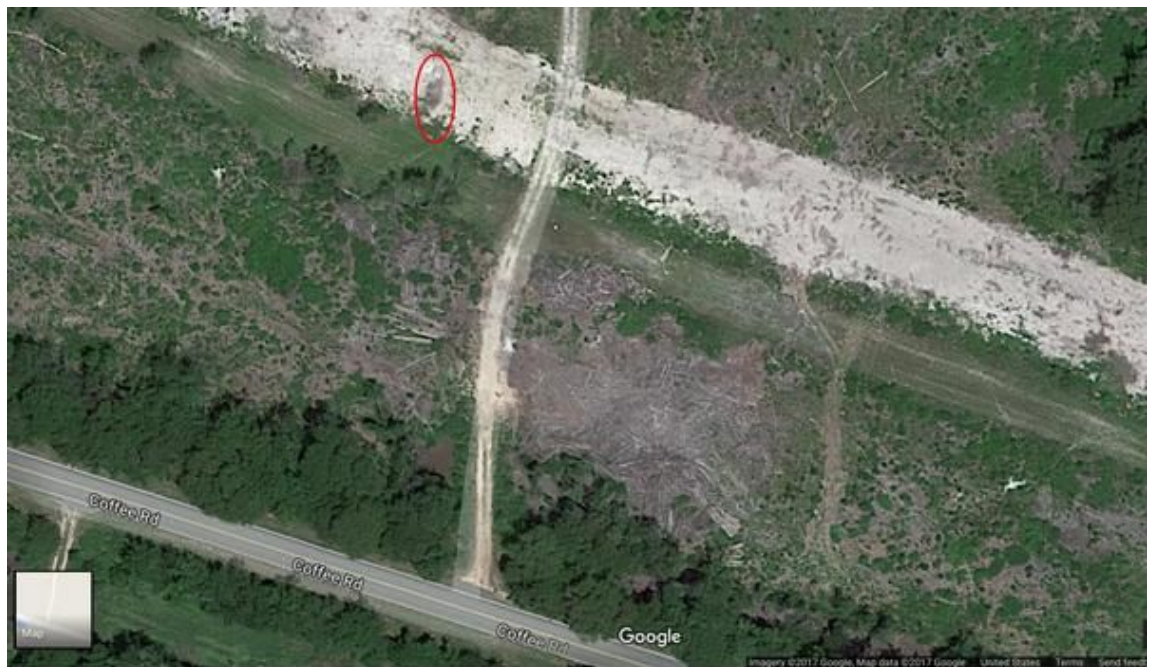
I took these pictures Tuesday, September 19, 2017, looking west. This sinkhole is at [30.918631, -83.590638](#), between Little Creek and Okapilco Creek, between Morven and Barwick on Coffee Road, about 3500 feet west of GA 333, aka Moultrie Road, north of Quitman, Brooks County,

Georgia. It is in the area shown in Sabal Trail alignment map [1657-PL-DG-70197-221](#).

In the north part of the sinkhole there is what looks like exposed fill material. Did Sabal Trail fill in a sinkhole here before, and is it active again now?



This sinkhole appears to be visible in smaller form on google maps:



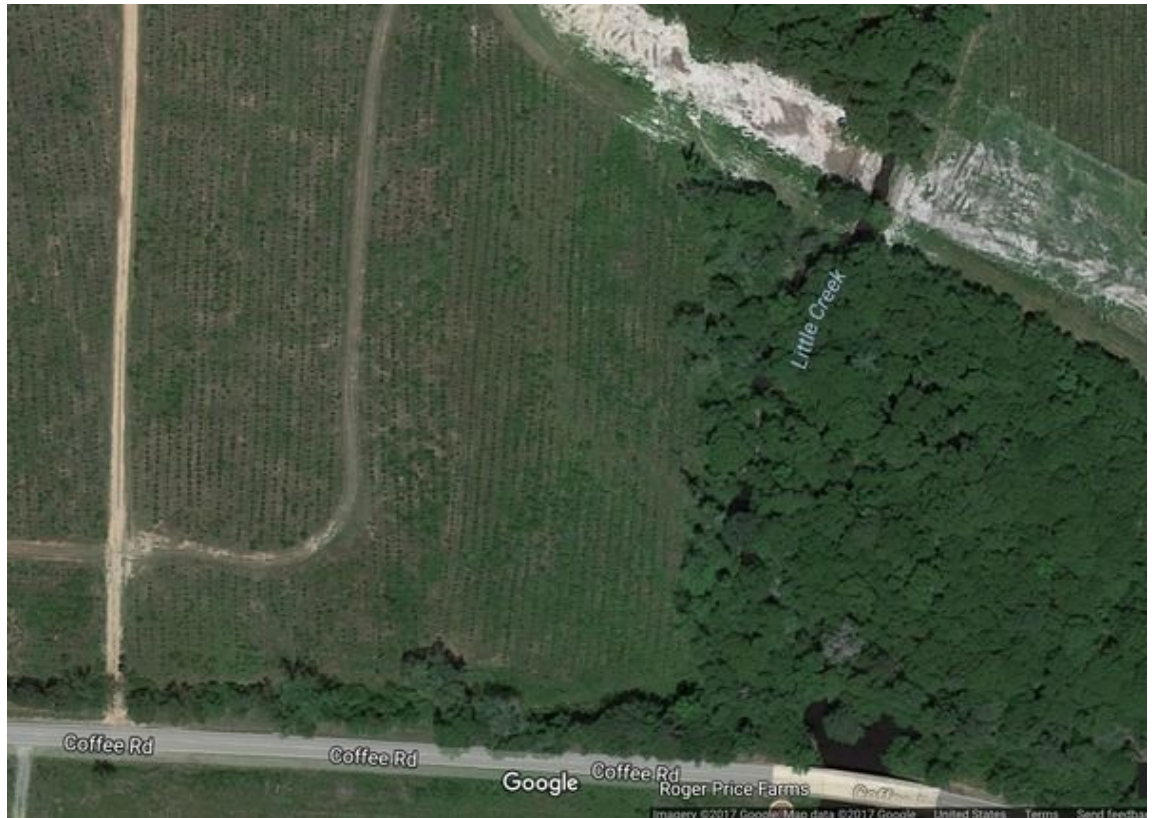
Looking a little farther east on google maps, are these more sinkholes?



And still farther east just before Okapilco Creek, are these still more sinkholes?



Back to the west at Little Creek, are these sinkholes?



Prompt response requested

Sabal Trail no longer even files a biweekly report. I am not asking Sabal Trail. I am asking you, the permitting and safety agencies.

I appreciate the previous responses from the Georgia Environmental Protection Division.

WWALS requests prompt written responses to all these questions, preferably via email. If I do not hear from you by tomorrow, I will be calling each of you, as well as the news media.

Thank you for your attention to these questions. I await your prompt reply.

Sincerely,

John S. Quarterman, Suwannee Riverkeeper
President, WWALS Watershed Coalition
PO Box 88, Hahira, GA 31632
850-290-2350
wwalswatershed@gmail.com