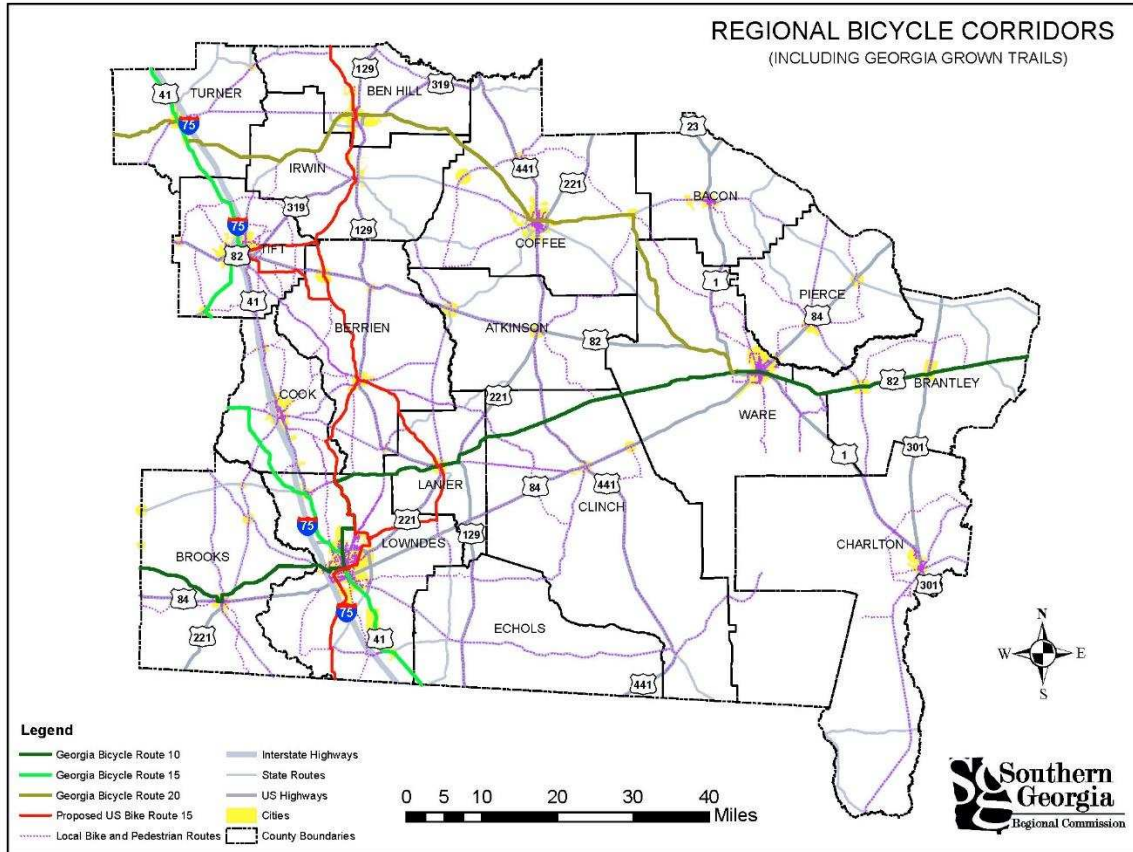


Alternative Modes.

Bicycle Network



The above map shows bicycle corridors in the region. State Bicycle Routes 10, 15, and 20 pass through the region, as does the proposed U.S. Bike Route 15. In addition, several counties have locally designated bicycle routes.

Mode choice is generally limited throughout the entire region (except in a few select areas, depending on trip destination and origin), due to the overall lack of sidewalks, lack of bicycle infrastructure, and lack of public transit services.