

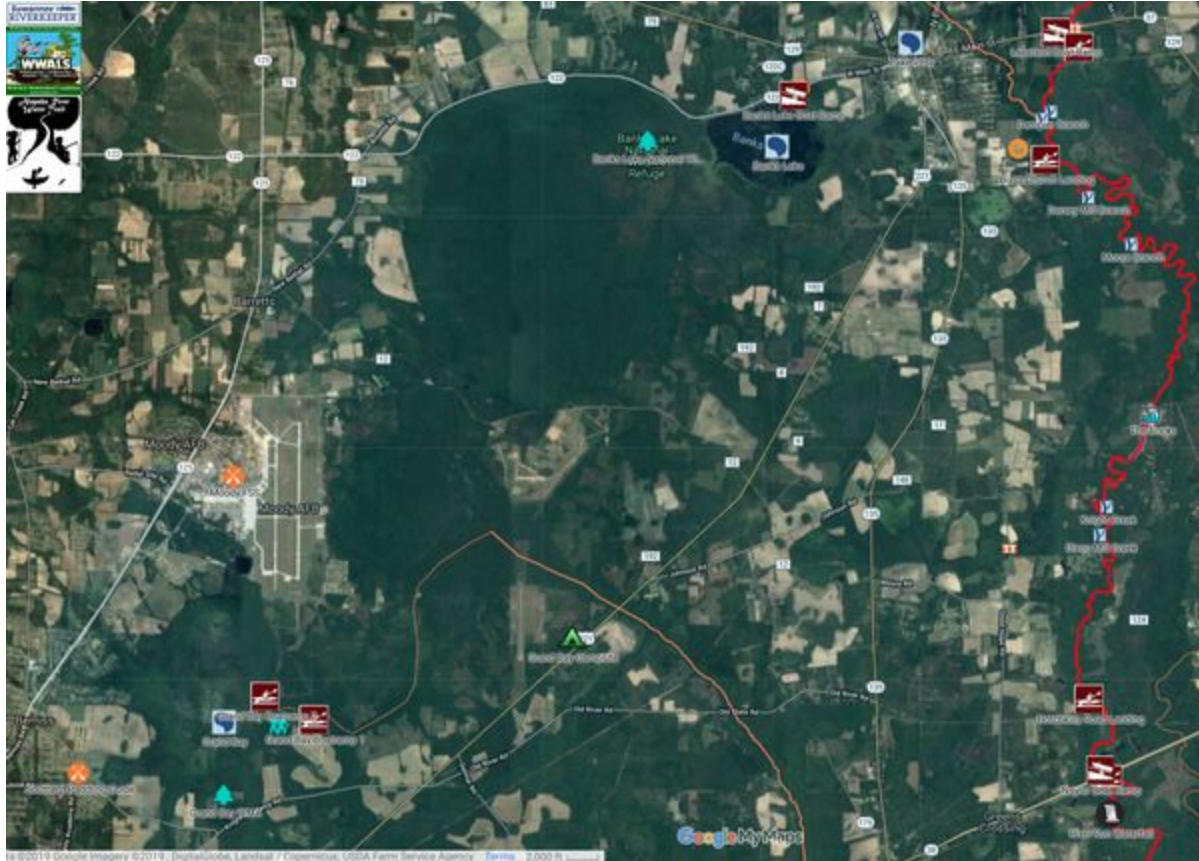
Grand Bay, changing its Designated Use to Recreational

- *Name and length of the waterbody.*

Grand Bay. “The Grand Bay Wildlife Management Area (WMA) encompasses 2,623 acres of state-owned property and 5,874 acres of land under license from the U.S. Air Force.”

- *Location of the reach, shown on a map.*

See also <http://wwals.net/maps/alapaha-water-trail/>



- *Any 305(b)/303(d) impairment(s) &/or TMDL(s).*

None known. However, Moody Air Force Base leaked toxic firefighting foams (per- and polyfluorinated alkyl substances or PFASs,) at numerous locations upstream of Grand Bay. <http://wwals.net/?p=48001>

- *Current users of the waterbody, including but not limited to*

- *businesses or industries,*

- The Lanier-Lakeland Chamber of Commerce advertises Grand Bay and the Grand Bay Wetland Educational Center as part of Lanier County as a “Fisherman’s Paradise.”

<http://www.lakelandchamber.org/parks-trails.htm>

- WWALS often organizes hiking outings in Grand Bay; see <http://wwals.net/events-2/outings-events/>
- See also attached letter from Georgia Beer Co.

- *parks within the waterbody and watershed,*

- GA DNR’s Grand Bay Wildlife Management Area (WMA)

- *and any “blue trails” on the water for water-craft recreation activities.*

The WWALS Alapaha River Water Trail includes Grand Bay. <http://wwals.net/maps/alapaha-water-trail/>

- *Letters of support from:*

- *dischargers, domestic &/or industrial, to the reach.*

- See next bullet item (stakeholders) for Lowndes County and Lanier County.

- *municipalities, county Board of Commissioners, other affected governmental bodies, and other stakeholders who*

live in the watershed.

All those who endorsed the Alapaha River Water Trail, especially Lowndes County and Lanier County. See Withlacoochee River.

The 2016 Greater Lowndes Comprehensive Plan lists Grand Bay Wildlife Management Area and Wetland Education Center among “Important parts of the local economy which should be better promoted and utilized”.
<https://www.lowndescounty.com/DocumentCenter/View/1512/2016-Greater-Lowndes-Comprehensive-Plan-PDF>

- *Investments, both completed and pending, for improved use of the waterbody such as boat ramps, parks, trails, or drinking water systems. Include the amount of the investment, as well as who funded the project(s) and for what purpose.*

GA DNR’s Grand Bay Wildlife Management Area has two boat ramps, primitive camping, extensive boardwalk, observation tower, hiking trails, and educational center. It lists canoeing first among activities, along with lake fishing.
<https://georgiawildlife.com/grand-bay-wma>