

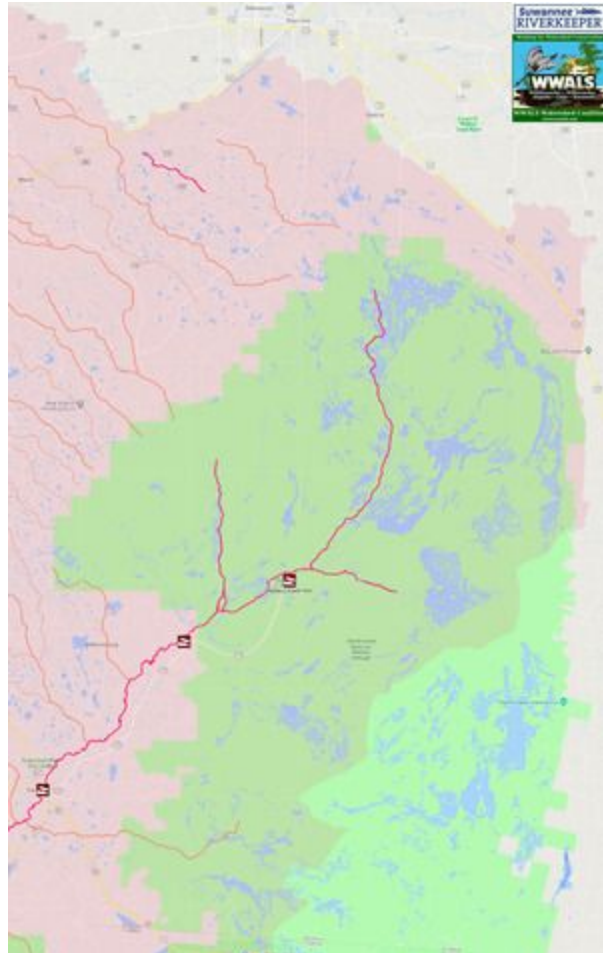
Okefenokee Swamp, changing its Designated Use to Recreational

- *Name and length of the waterbody.*

Okefenokee Swamp. About half of its 438,000 acres are in the Suwannee River Basin, and almost all of that is in Georgia.

- *Location of the reach, shown on a map.*

See also <http://wwals.net/blog/maps/basin/>



- *Any 305(b)/303(d) impairment(s) &/or TMDL(s).*

- Suwannee River Mainstem: Suwannee Canal in Okefenokee Swamp to State Line, Total Mercury in Fish Tissue Residue TMDL <http://arm-permit2k.dep.state.fl.us/psd/1210471/U0001195.pdf>
- Okefenokee Swamp Watershed Plan, Dissolved Oxygen TMDL http://epd.georgia.gov/sites/epd.georgia.gov/files/tmdl/TMDL_Implementation_Plans/Suwannee/0311020101/TMDLIP_OkefenokeeSwamp_0311020101_Y2002.pdf

STATE OF GEORGIA
TMDL IMPLEMENTATION PLAN
WATERSHED APPROACH
SUWANNEE RIVER BASIN

Local Watershed Governments
SOUTHEAST GEORGIA RDC
Clinch County
Ware County
Atkinson County
City of Argyle

TMDL Implementation Plans are platforms for establishing a course of action to restore the quality of impaired water bodies in a watershed. They are intended as a continuing process that may be revised as new conditions and information warrant. Procedures will be developed to track and evaluate the implementation of the management practices and activities identified in the plans. Once restored, appropriate management practices and activities will be continued to maintain the water bodies. With input from appropriate stakeholder groups, a TMDL Implementation Plan has been developed for a cluster of impaired waterbodies/streams and the corresponding pollutants. The impaired waterbodies are located in the same watershed/sub-basin identified by a HUC10 code (Figure 1).

This Implementation Plan addresses an action plan, education/outreach activities, stakeholders, pollutant sources, and potential funding resources affecting the sub-basin. In addition, the Plan describes (a) regulatory and voluntary practices/control actions (management measures) to reduce target pollutants, (b) milestone schedules to show the development of the management measures (measurable milestones), (c) a monitoring plan to determine the efficiency of the management measures and measurable milestones, and (d) criteria to determine whether substantial progress is being made towards reducing pollutants in the impaired waterbodies. The overall goal of the Plan is to define a set of actions that will help achieve water quality standards in the state of Georgia. Following this section is information regarding individual impaired streams.

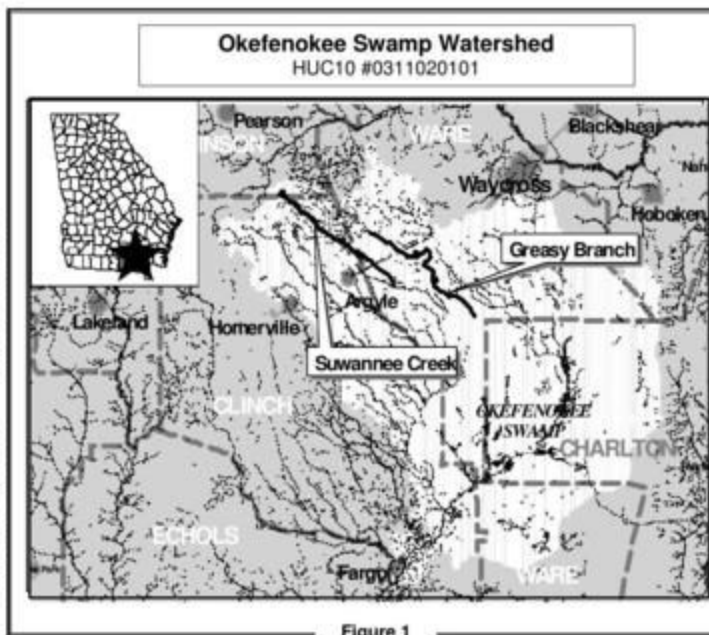


Figure 1

Impaired Waterbody*	Impaired Stream Location	Impairment
1. Greasy Branch	U.S. Hwy 84/SR38 to Okefenokee Swamp	Dissolved Oxygen (DO)
2. Suwannee Creek	Headwaters to Little Suwannee Creek near Manor	Dissolved Oxygen (DO)

*These Waterbody Numbers are referenced throughout the Implementation Plan.

- *Current users of the waterbody, including but not limited to*
 - *businesses or industries,*
 - The Okefenokee Swamp is a world-renowned tourist attraction, with daily boat tours, overnight boat campers, and day trippers.
 - Griffis Fish Camp, located on the Suwannee River just downstream of the swamp, does a thriving business with campers, boaters, and fishers.
 - WWALS often organizes outings in the Okefenokee Swamp; see <http://wwals.net/events-2/outings-events/>
 - See also attached letter from Georgia Beer Co.
 - *parks within the waterbody and watershed,*
 - GA DNR’s Stephen C. Foster State Park is located within
 - the Okefenokee National Wildlife Refuge (designated by Congress in 1936 and managed by the U.S. Fish and Wildlife Service, USFWS),
 - as is the Okefenokee Wilderness (designated by Congress in 1974 and also managed by USFWS).
 - *and any “blue trails” on the water for water-craft recreation activities.*
 - The Okefenokee Wilderness Canoe Trails cover the Okefenokee National Wildlife Refuge, entirely in Georgia. <http://wwals.net/water-trails/okefenokee-wilderness-area-canoe-trails/>
 - The Suwannee River Wilderness Trail extends from the Okefenokee Swamp into Florida, with four landings in Georgia. <http://wwals.net/maps/suwannee-river-wilderness-trail/srwt-map/srwt-access>
- *Letters of support from:*
 - *dischargers, domestic &/or industrial, to the reach.*

See next bullet point (stakeholders) for Fargo, Clinch County, Ware County, and Lowndes County.
 - *municipalities, county Board of Commissioners, other affected governmental bodies, and other stakeholders who live in the watershed.*
 - The Adopted 2015 Joint Clinch County and Cities of Argyle, Du Pont, Fargo, and Homerville Comprehensive Plan Update says “Encourage private operators to explore opportunities for tourism on the Okefenokee and the Suwannee River. The advertising of natural resources and the Eco-Lodge could increase environmental tourism and environmental research.... In collaboration with the Department of Natural Resources, continue to conduct a marketing campaign to promote the Suwannee River Eco-Lodge and golf course packages.... Build a boardwalk to connect businesses to the Suwannee River

Eco-Lodge.”

<https://www.sgrc.us/documents/localgovernmentsservices/comprehensiveplans/4d34fa006d652aba24fe1ab27b3d61e2.pdf>

- The Adopted 2016 joint Ware County and City of Waycross Comprehensive Plan Update says “Increase marketing and promotion of tourist attractions such as ... Okefenokee Wildlife Refuge.”
<https://www.sgrc.us/documents/localgovernmentsservices/comprehensiveplans/230f9deb8a67b3e36fcc64c2c617f20c.pdf>
- The 2016 Greater Lowndes Comprehensive Plan lists “proximity to Okefenokee Swamp” among “Important parts of the local economy which should be better promoted and utilized”.
<https://www.lowndescounty.com/DocumentCenter/View/1512/2016-Greater-Lowndes-Comprehensive-Plan-PDF>
- *Investments, both completed and pending, for improved use of the waterbody such as boat ramps, parks, trails, or drinking water systems. Include the amount of the investment, as well as who funded the project(s) and for what purpose.*

GA DNR’s Stephen C. Foster State Park has a boat ramp, boat rental, boat tours, 9 cottages, 99 campsites, 1 primitive campground, 3 picnic shelters, a playground, and other outbuildings, <https://gastateparks.org/StephenCFoster> as well as the Suwannee River Eco-Lodge off of GA 441 north of Fargo. <https://gastateparks.org/SuwanneeRiverEcoLodge>

Okefenokee National Wildlife Refuge has numerous sleeping platforms on boating trails in the park, as well as a boardwalk and landing on Billy’s Island. <https://www.fws.gov/refuge/okefenokee/>