



SRWMD

Water Quality Monitoring

Darlene Velez
Suwannee River Water Management District

April 25, 2019

SRWMD Water Quality Mission

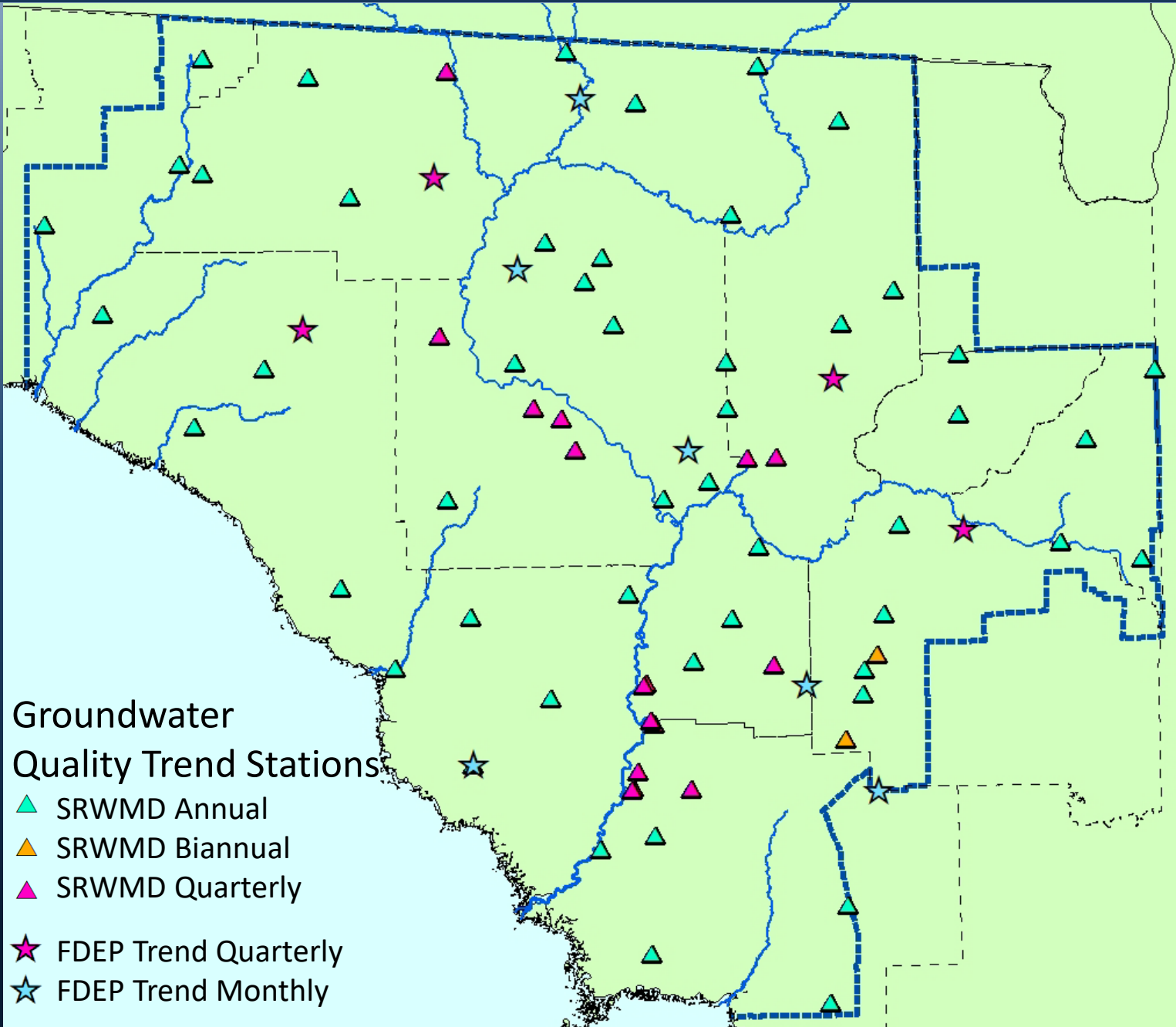
- Water quality improvement projects in support of FDEP Total Maximum Daily Loads and Basin Management Action Plan efforts
- Develop and update Surface Water Improvement and Management (SWIM) Plans
- Environmental monitoring to assist state partners in identifying trends and areas of concern
- Assisting in emergency response sampling

What We Monitor for Trends

- Nutrients, metals, alkalinity, chlorophyll, physical parameters, total organic carbon, common anions and cations

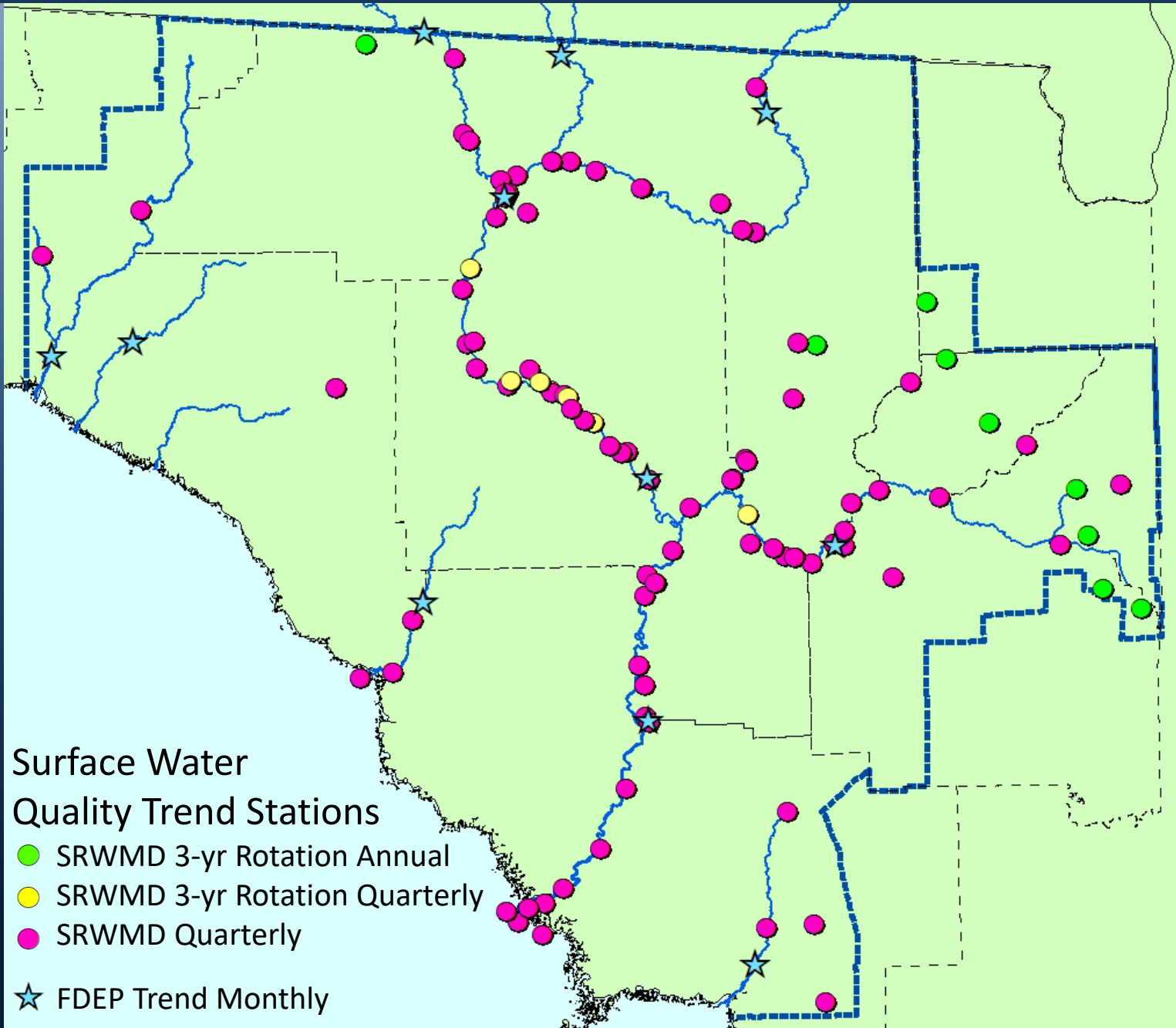
What We Don't Monitor for Trends

- Bacteria, pesticides, herbicides, mercury pharmaceuticals, radionuclides, industrial byproducts, petroleum products



Groundwater
Quality Trend Stations

- ▲ SRWMD Annual
- ▲ SRWMD Biannual
- ▲ SRWMD Quarterly
- ★ FDEP Trend Quarterly
- ★ FDEP Trend Monthly



Water Quality Missions by Agency

- Implements state laws to protect drinking water and environmental water quality
- DEAR Program – monitoring and assessing surface and groundwater quality
- Source and Drinking Water Program – statutory authority to monitor and evaluate public water utilities serving more than 25 people



- Oversight and public education for smaller drinking water systems, including private wells
- Jurisdiction to issue public health advisories, but no enforcement
- Beach WQ, private well testing, onsite sewage programs, public swimming pools

FLORIDA DEPARTMENT OF
HEALTH



- WQ Improvement Projects in support of FDEP TMDLs and BMAPs
- Develop and update SWIM Plans
- Monitoring to assist state partners in identifying trends and areas of concern

Sewage Spill Response

Notification of spill event
from City of Valdosta

FDEP leads sampling efforts starting
day after notification

- Usually FDEP staff and lab
- SRWMD staff and contract lab used as backup, provides hydrologic expertise when needed

FDOH uses sampling results
to determine if release of
health advisory is needed

Sampling continues if
E. coli results are
above 410 cfu/ 100mL



Notifications and updates also
released on SRWMD website
and social media as they occur

When E. coli levels are below 410 cfu / 100mL:
sampling ends, health advisories are lifted

December Spill Sampling Response

Sunday 12/2:

Spill Occurred in Valdosta, GA

Monday 12/3: State Agencies Notified;
FDEP coordinates sampling efforts

Tuesday 12/4: FDEP sampled
Withlacoochee and Suwannee

Wednesday 12/5: SRWMD sampled
Alapaha, Withlacoochee, & Suwannee

Friday 12/7: FDEP sampled
Withlacoochee and Suwannee

Saturday 12/8: FDOH sampled
Withlacoochee and Suwannee

Tuesday 12/11: SRWMD sampled
Lower Suwannee



December Spill Sampling Response

Sunday 12/2:

Spill Occurred in Valdosta, GA

Monday 12/3: State Agencies Notified;
FDEP coordinates sampling efforts

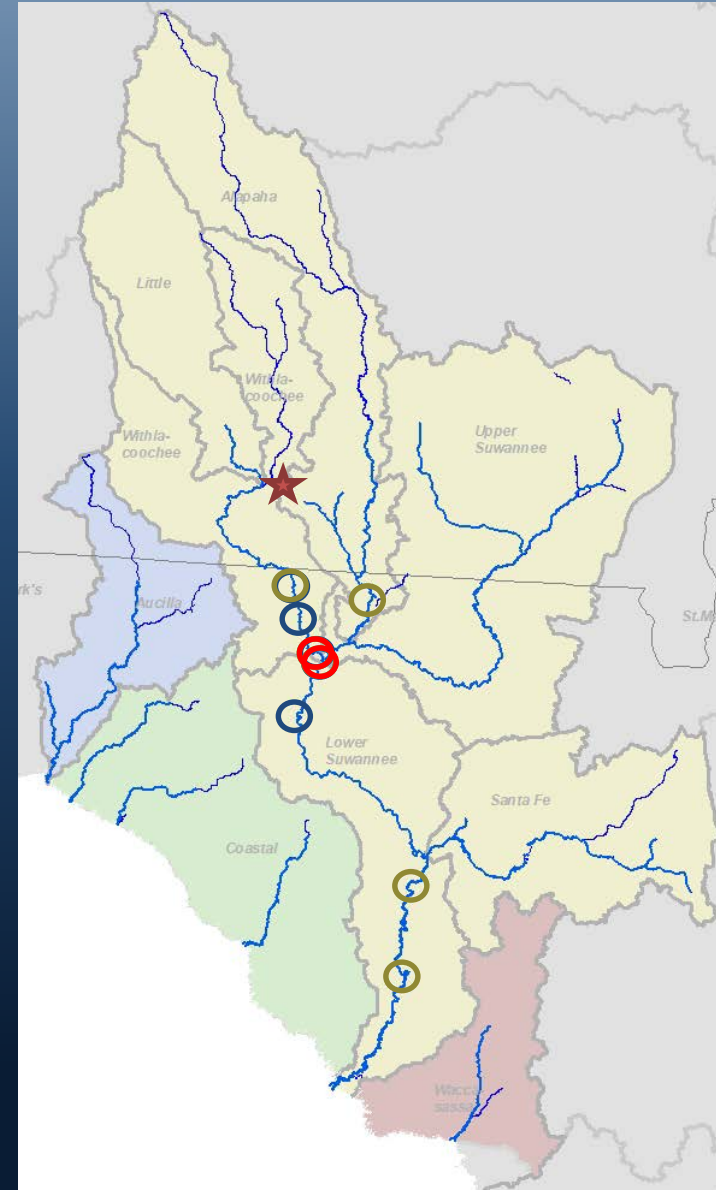
Tuesday 12/4: FDEP sampled
Withlacoochee and Suwannee

Wednesday 12/5: SRWMD sampled
Alapaha, Withlacoochee, & Suwannee

Friday 12/7: FDEP sampled
Withlacoochee and Suwannee

Saturday 12/8: FDOH sampled
Withlacoochee and Suwannee

Tuesday 12/11: SRWMD sampled
Lower Suwannee



Where to Find Our Data

www.srwmd.org

Science & Data  Water Data Portal

<http://www.srwmd.org/507/Water-Data-Portal>

STORET/ WIN Statewide Database

<http://prodenv.dep.state.fl.us/DearSpa/public/welcome>

<http://prodenv.dep.state.fl.us/DearWin/public/wavesSearchFilter?calledBy=menu>

Contact Us

<https://www.srwmd.org/FormCenter/District-7/Contact-Us-45>

PublicRecordsRequest@srwmd.org; 386-362-1001