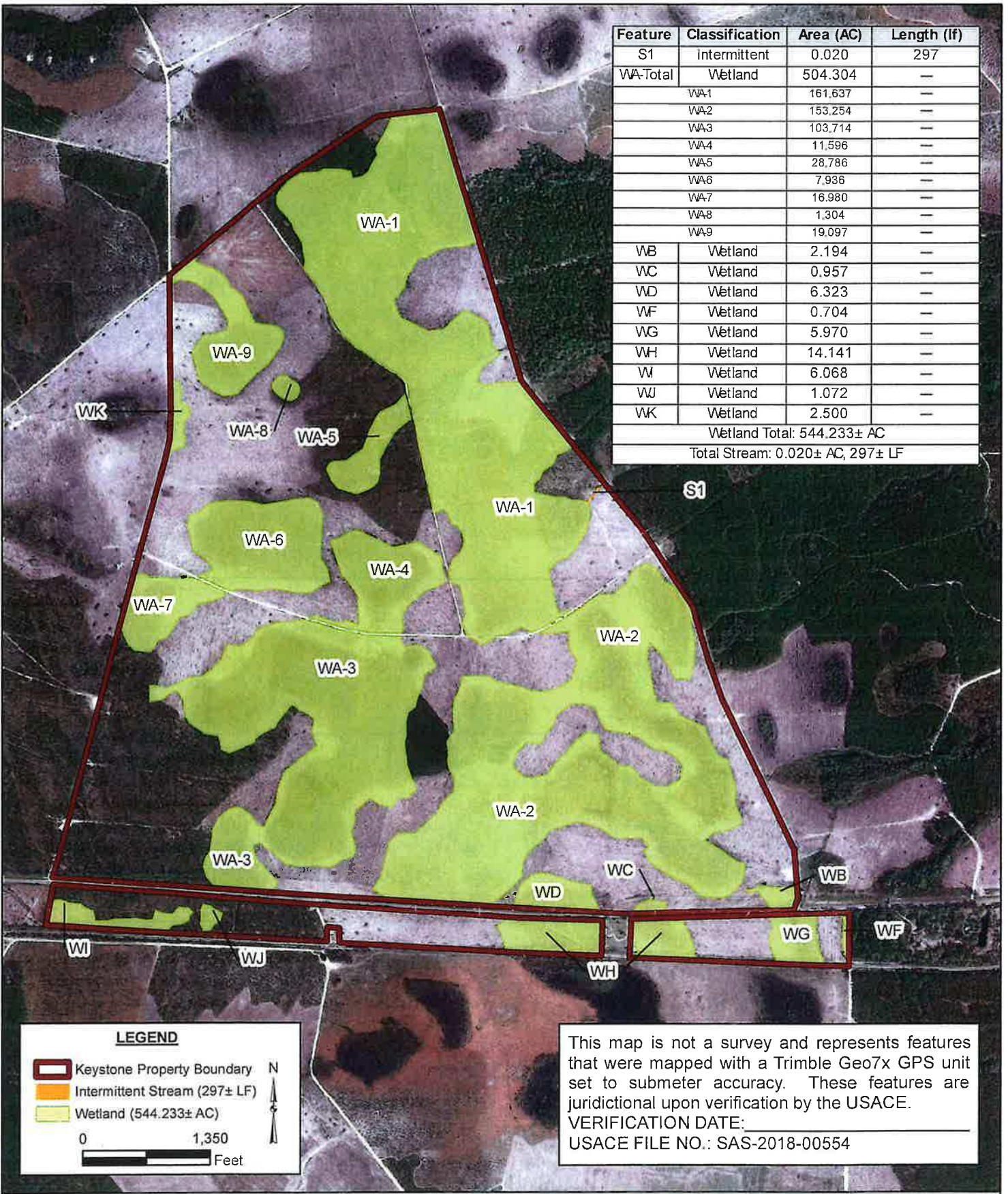


Feature	Classification	Area (AC)	Length (lf)
S1	Intermittent	0.020	297
WA-Total	Wetland	504.304	—
WA-1		161.637	—
WA-2		153.254	—
WA-3		103.714	—
WA-4		11.596	—
WA-5		28.786	—
WA-6		7.936	—
WA-7		16.980	—
WA-8		1.304	—
WA-9		19.097	—
WB	Wetland	2.194	—
WC	Wetland	0.957	—
WD	Wetland	6.323	—
WF	Wetland	0.704	—
WG	Wetland	5.970	—
WH	Wetland	14.141	—
WI	Wetland	6.068	—
WJ	Wetland	1.072	—
WK	Wetland	2.500	—
Wetland Total:		544.233± AC	
Total Stream:		0.020± AC, 297± LF	



This map is not a survey and represents features that were mapped with a Trimble Geo7x GPS unit set to submeter accuracy. These features are jurisdictional upon verification by the USACE.
 VERIFICATION DATE: _____
 USACE FILE NO.: SAS-2018-00554



FIGURE 6: WATERS OF THE US DELINEATION MAP
 TWIN PINES MINERALS - KEYSTONE PROPERTIES
 WATERS OF THE U.S. DELINEATION

BASEMAP: Google Earth, Europa Technologies (C) 2018. Image Date: 3/6/2018

DRAWN BY: CMS
CHECKED BY: CGT
DRAWING DATE: 09/18/2018
REVISION DATE: 12/06/2018
TTL JOB NO. 000180200804.00
APPROX. SCALE: 1" = 2,000'