





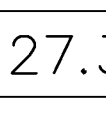

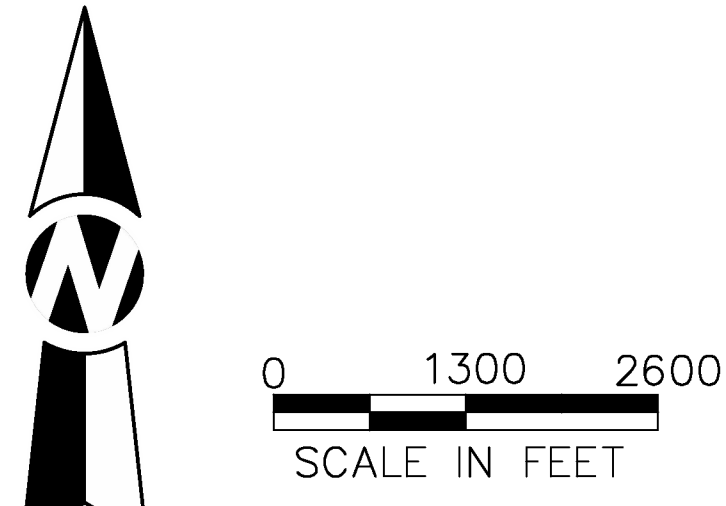
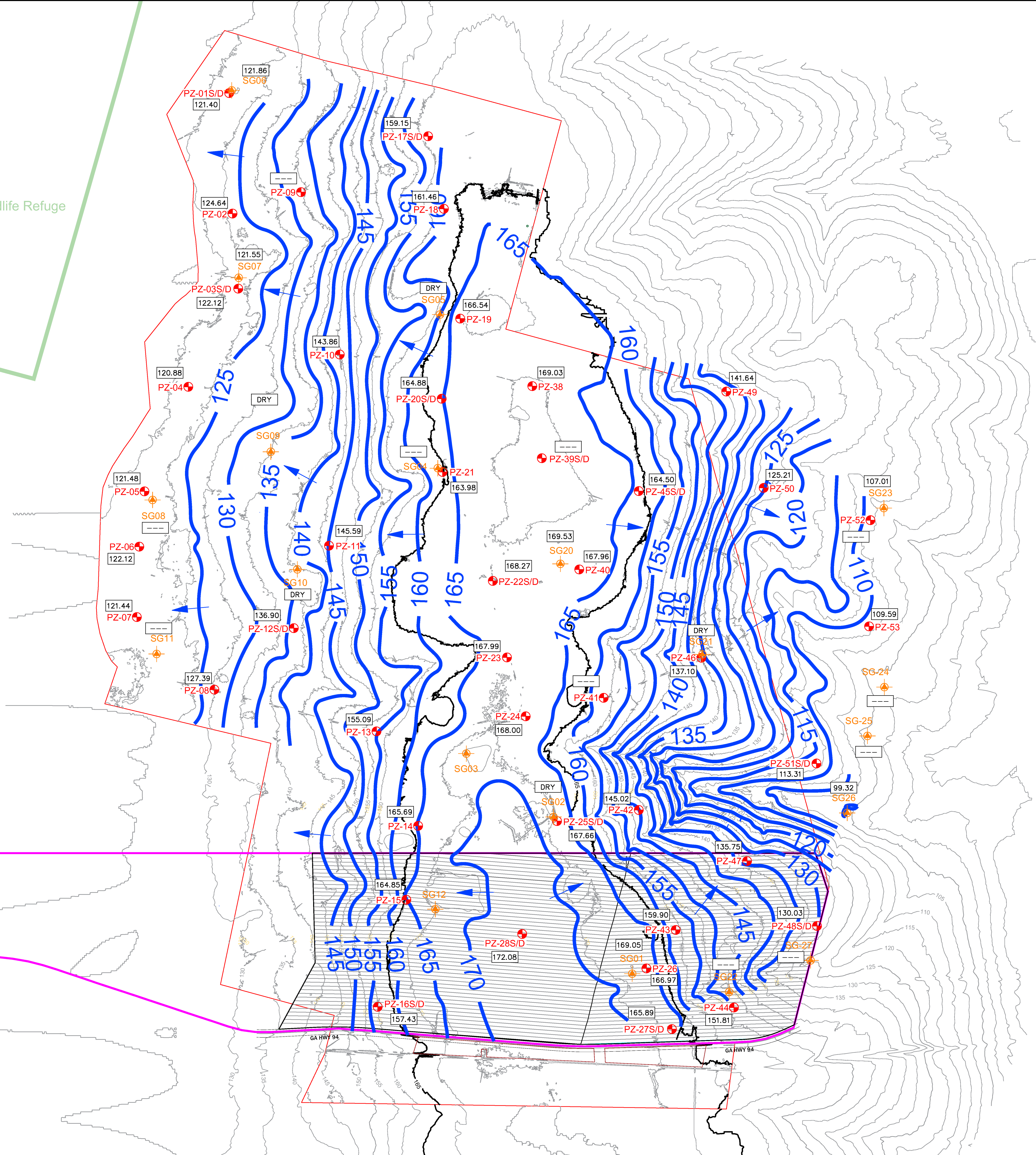


LEGEND

-  Approximate Property Boundary
-  Mining Permit Boundary
-  Mining Impact Area
-  Piezometer Location and ID
-  Staff Gauge Location and ID
-  Groundwater Contour of Potentiometric Surface (c.i. = 5 ft. AMSL)
-  Groundwater Elevation (ft. AMSL)
-  Groundwater Flow Direction

Okefenokee National Wildlife Refuge



Drawn By: ACP
 Checked By: JMT/JRS
 Date: 07/03/2019
 Proj. No.: 00180200804.00
 File Name: General_Map_client

FIGURE 3.

POTENTIOMETRIC SURFACE MAP 04-26-2019

TWIN PINES MINERALS
 USACE INDIVIDUAL PERMIT APPLICATION
 ST. GEORGE, CHARLTON COUNTY, GEORGIA

