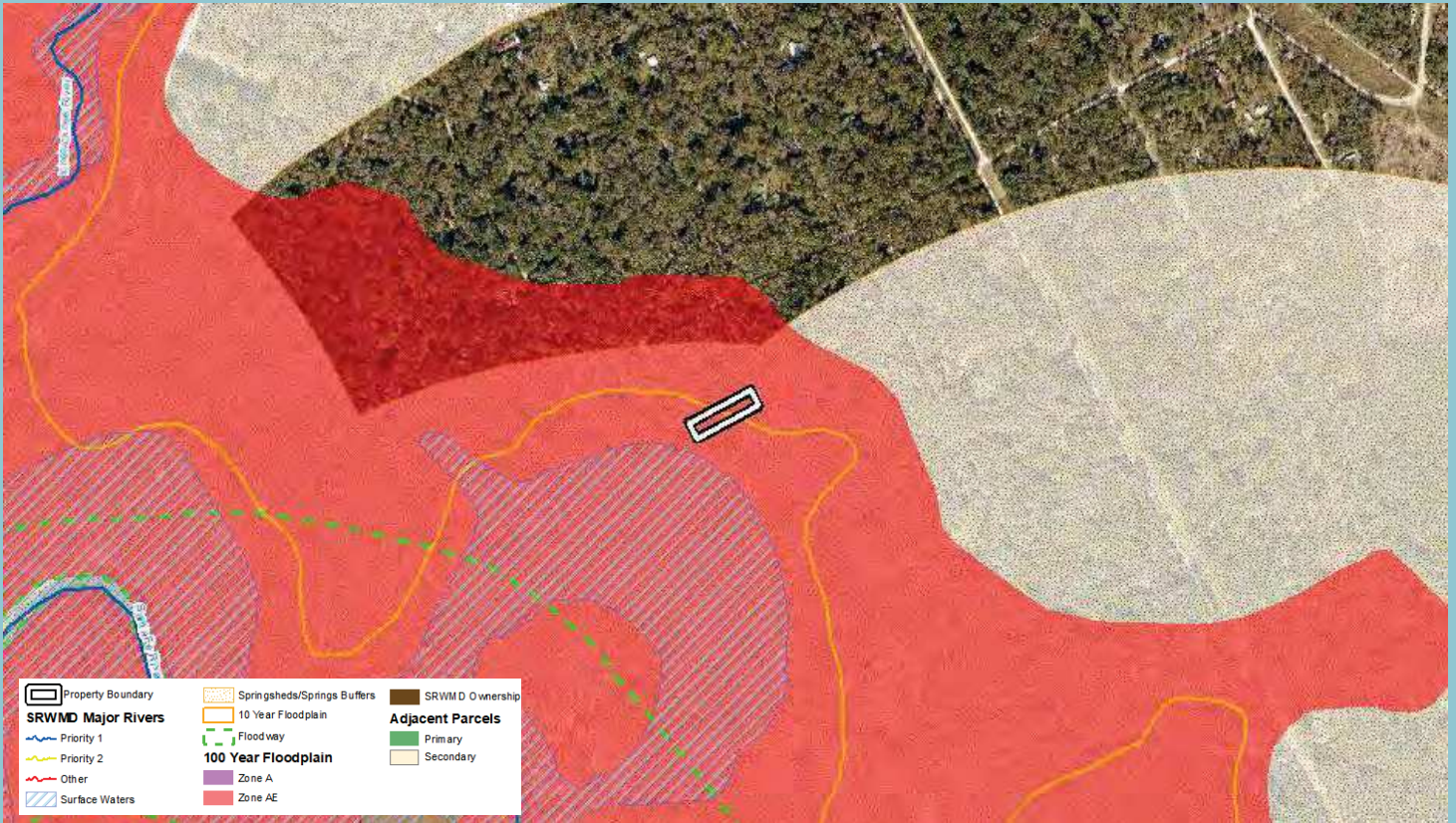


# Suwannee River Water Management District Triage Analysis Results



Property Name: Three Rivers Estates

Date: 06/20/19

Acreage: 0.918 ac

County: Columbia

Transaction Type: Surplus

## Surface Water Protection-

Major River? (N)

Riverine Surface Waters? (N)

## Springs Protection -

Within Springshed or springs buffers?  
(Y) [Springs Buffer]

## Adjacency

(N) [priority]

## Flood Protection-

Floodway? (N)

10 Year Floodplain? (Y) [± 0.5 ac]

100 Year Floodplain? (Y) [0.918 ac]

## Miscellaneous:

PFA? (N)

WRCA? (Y) [Eastern]

BMAP? (Y) [Santa Fe]

