

Feature	Classification	Area (AC)	Length (lf)
S1	Intermittent	0.020	297
WA-Total	Wetland	504.304	--
WA1		161.637	--
WA2		153.254	--
WA3		103.714	--
WA4		11.596	--
WA5		28.766	--
WA6		7.936	--
WA7		16.980	--
WA8		1.304	--
WA9		19.097	--
WB	Wetland	2.194	--
WC	Wetland	0.957	--
WD	Wetland	6.323	--
WF	Wetland	0.704	--
WG	Wetland	5.970	--
WH	Wetland	14.141	--
WI	Wetland	6.068	--
WJ	Wetland	1.072	--
WK	Wetland	2.500	--
Wetland Total:		544.233± AC	
Total Stream:		0.020± AC, 297± LF	

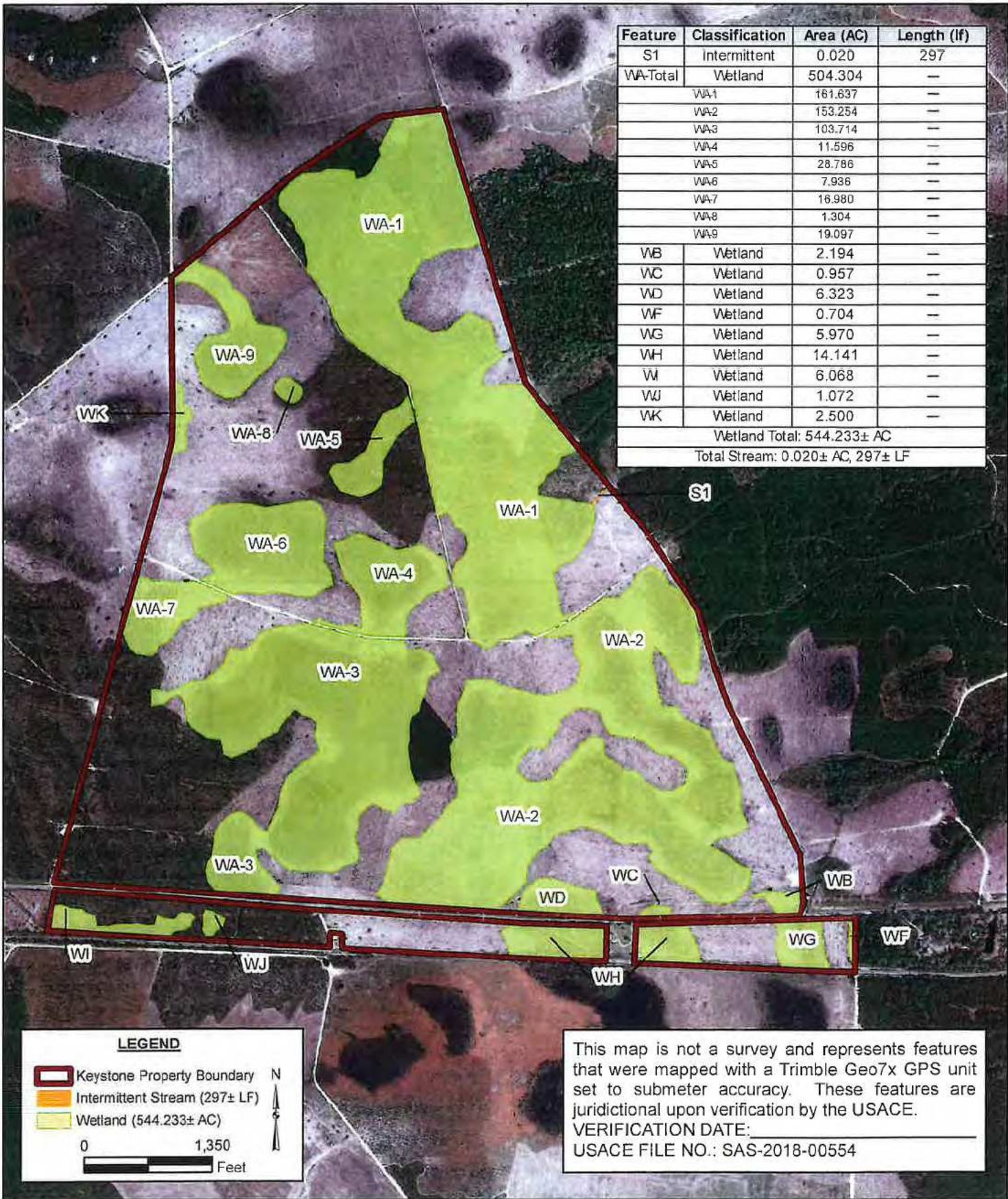


FIGURE 6: WATERS OF THE US DELINEATION MAP
TWIN PINES MINERALS - KEYSTONE PROPERTIES
WATERS OF THE U.S. DELINEATION

BASEMAP: Google Earth, Europa Technologies (C) 2018. Image Date: 3/6/2018

DRAWN BY: CMS
CHECKED BY: CGT
DRAWING DATE: 09/18/2018
REVISION DATE: 12/06/2018
TTL JOB NO. 000180200504.00
APPROX. SCALE: 1" = 2,000'