

# Withlacoochee and Little River Water Trail

Unspoiled Blackwater Rivers  
in south Georgia and north Florida

Join a WWALS monthly paddle outing!



[gawatertrails.org](http://gawatertrails.org)



[wwals.net](http://wwals.net)

Two dozen landings on 157 boatable river miles in two states.

The *Withlacoochee River* is one of the few undammed left in this country, flowing in its unruly blackwater splendor for 115 miles past cypress, river birch, oaks, and pines through Georgia, past Langdale Park, and two of only six second magnitude springs in Georgia, McIntyre Spring and Arnold Springs, with shoals at the state line, and State Line Boat Ramp, site of the *WWALS Boomerang paddle race*.

In Florida, past Madison Blue Spring State Park and its first magnitude spring, then many others, to the confluence with the Suwannee River at Suwannee River State Park.

The *Little River* is also an undammed tea-colored blackwater river below Reed Bingham State Park, the venue for the annual WWALS *BIG Little River Paddle Race*, between Adel and Moultrie, Georgia. The Little joins the Withlacoochee just outside Valdosta in Lowndes County, the largest population center in the entire Suwannee River Basin.

## Etiquette

1. Carry out all trash with you
2. Camp only where you know you have permission
3. Do not cut or damage living trees
4. Take only pictures or videos; leave no trace
5. Control pets or leave them at home
6. Respect wildlife
7. Respect waterfront property
  - Don't trespass on private property
  - Minimize impacts to shore
8. Be courteous to other water trail users

### Help Protect Your Watershed

Become certified to perform Water Quality Testing  
Report invasive species to [www.EDDMapS.org](http://www.EDDMapS.org)

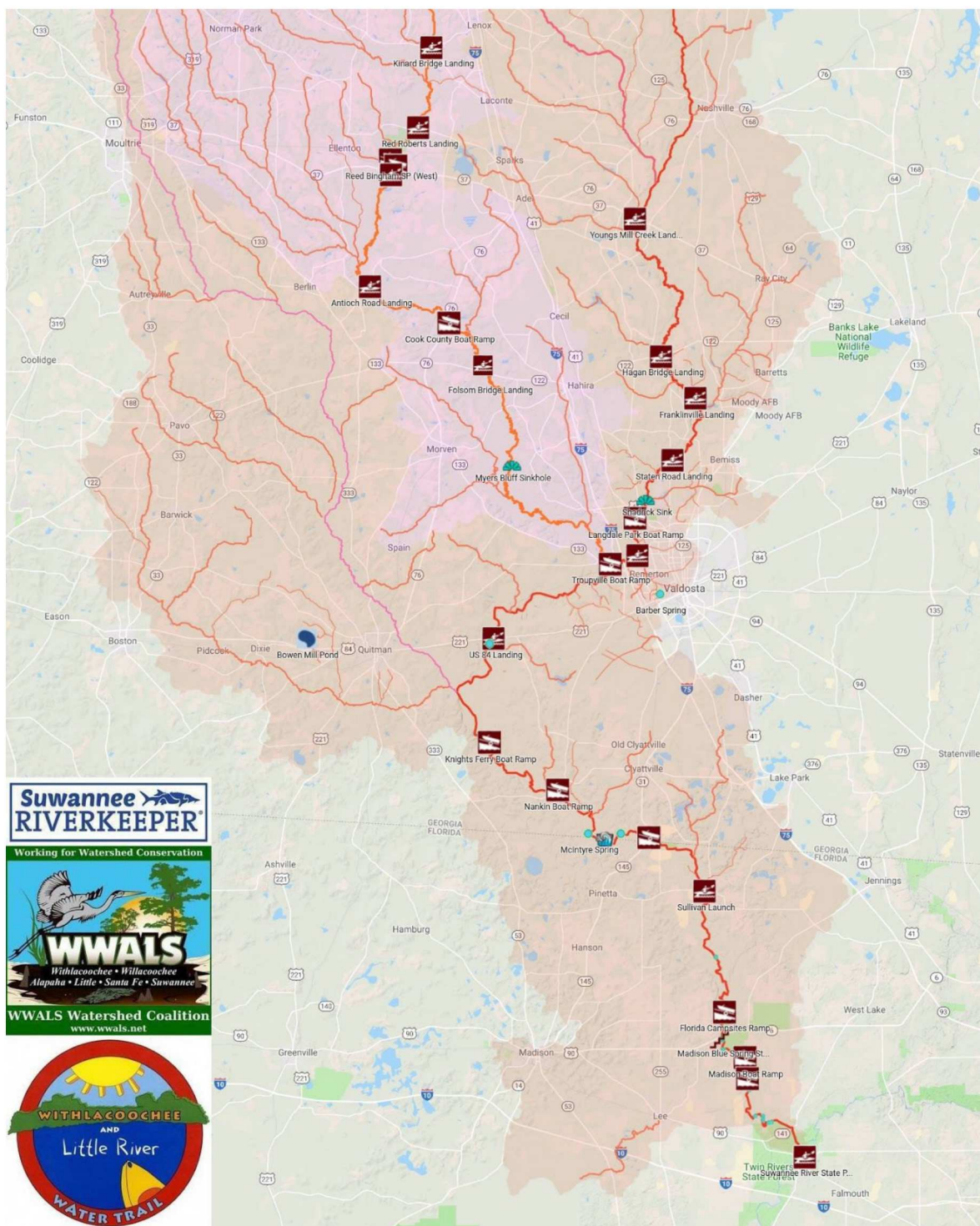
## Checklist

- Water and food
- Sunscreen & bug repellent
- Whistle, map, spare paddle
- Personal flotation device
- First aid kit & tiedowns
- Rope for shoals
- Clothes:
  - Warm & swim suit
  - Dry & waterproof bag
- Trash bag & trash picker
- Flashlight in case of dark
- Phone, battery, case, lanyard

Always file a **float plan** so emergency responders can locate you.

**WWALS Watershed Coalition, Inc. (WWALS)**, an IRS 501(c)(3) nonprofit charity corporation, advocates for conservation and stewardship of the Withlacoochee, Willacoochee, Alapaha, Little, and Suwannee River watersheds in south Georgia and north Florida through education, awareness, environmental monitoring, and citizen activities.

WWALS is the WATERKEEPER® Alliance member for the Suwannee River Basin as Suwannee RIVERKEEPER®.



- Ramp, Launch, Stairs, Outfitter, Canoe Rental, Point of Interest,
- Tributary, Lake, Spring, Sinkhole, Wastewater Treatment, Solar,
- Pipeline, Public Land, Hiking Trail, Camping, Picnic Area,
- Food, Water, Restrooms, Shelter, Handicapped Accessible

For more icons, water levels, etc. see: [wwals.net/maps/withlacoochee-river-water-trail/](http://wwals.net/maps/withlacoochee-river-water-trail/)

## Sponsors of this Water Trail

