

We're all in favor of that, too, but a 12.5 cent excise tax on bottle water pumping could bring in a lot more funds for such purposes.

We ask SRWMD to review Nestlé's Madison Blue Spring Withlacoochee River permit.

Summary

We respectfully request SRWMD to act in the public interest:

1. To deny the Seven Springs permit renewal at Ginnie Springs on the Santa Fe River
2. To review and possibly revoke Nestlé's Madison Blue Spring permit on the Withlacoochee River

It is not in the public interest for a Swiss company to profit by taking increasingly large amounts of spring water to the detriment of our springs, rivers, and wells.

Thank you for your consideration.

For the rivers and the aquifer,

John S. Quarterman

Suwannee RIVERKEEPER®

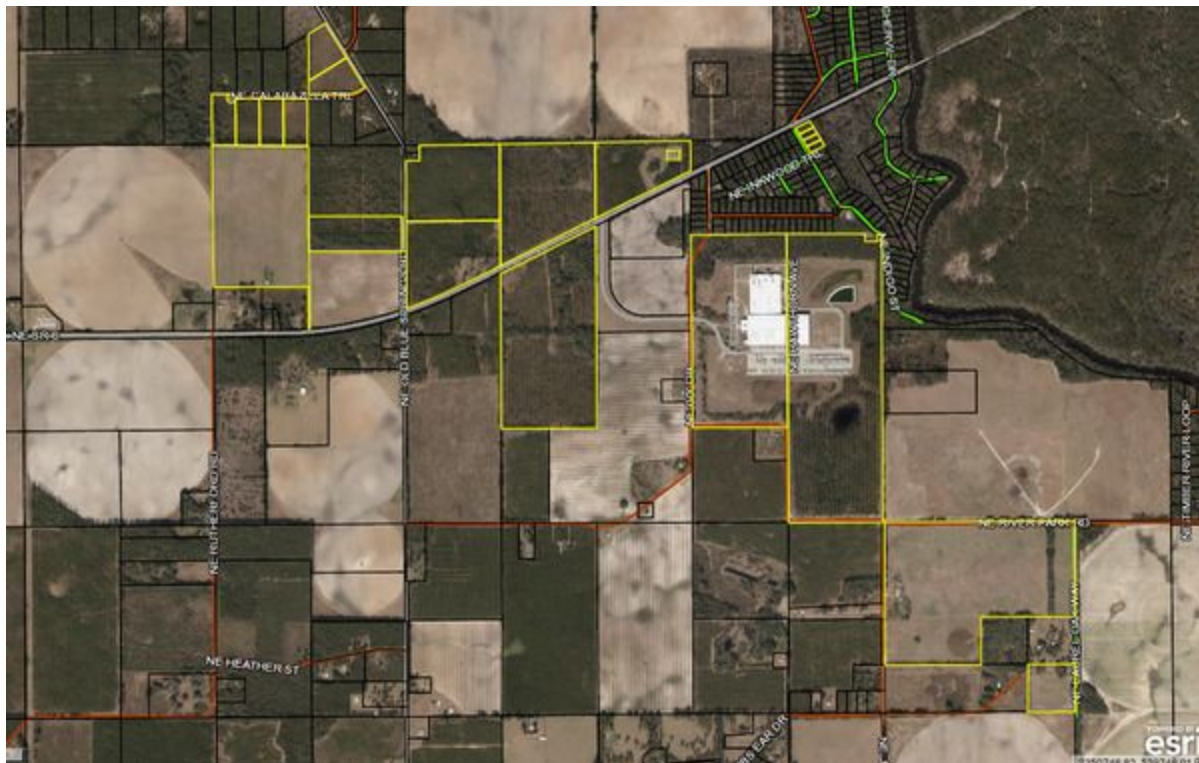
/s

WWALS Watershed Coalition, Inc.

contact@suwanneeriverkeeper.org

www.suwanneeriverkeeper.org

PS: We invite you and the SRWMD Board and Staff to join us on February 1 and 2, 2020, as we paddle down the Santa Fe River past many springs, including Ginnie Springs. See: <http://wwals.net/?p=50691>



Nestlé's landholdings next to Madison Blue Spring, according to the [Madison County Property Appraiser](#)