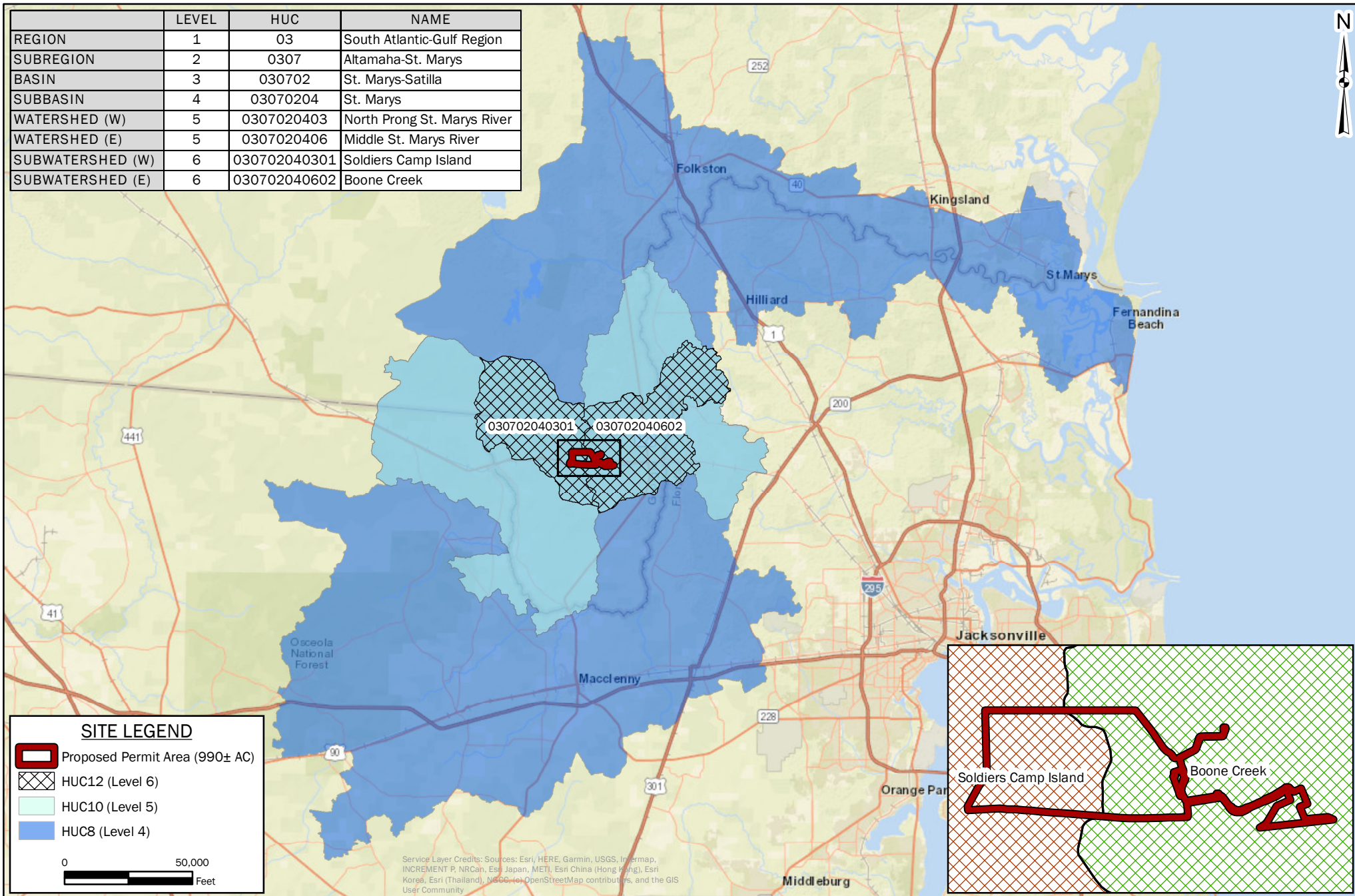


	LEVEL	HUC	NAME
REGION	1	03	South Atlantic-Gulf Region
SUBREGION	2	0307	Altamaha-St. Marys
BASIN	3	030702	St. Marys-Satilla
SUBBASIN	4	03070204	St. Marys
WATERSHED (W)	5	0307020403	North Prong St. Marys River
WATERSHED (E)	5	0307020406	Middle St. Marys River
SUBWATERSHED (W)	6	030702040301	Soldiers Camp Island
SUBWATERSHED (E)	6	030702040602	Boone Creek



**SITE LEGEND**

- Proposed Permit Area (990± AC)
- HUC12 (Level 6)
- HUC10 (Level 5)
- HUC8 (Level 4)

0 50,000 Feet

Service Layer Credits: Sources: Esri, HERE, Garmin, USGS, Intermap, INCREMENT P, NRCan, Esri Japan, METI, Esri China (Hong Kong), Esri Korea, Esri (Thailand), NCCO, Inc., OpenStreetMap contributors, and the GIS User Community



**FIGURE 76: HYDROLOGIC UNIT CODE (HUC) MAP**  
**TWIN PINES MINERALS**  
 ST. GEORGE, CHARLTON COUNTY, GEORGIA  
 BASEMAP: ESRI World Street Map (See Service Layer Credits).

DRAWN BY: DEK
CHECKED BY: CMS
DRAWING DATE: 2/28/2020
REVISION DATE: N/A
TTL JOB NO.: 000180200804.00
APPROX. SCALE: 1 in = 50,000 ft