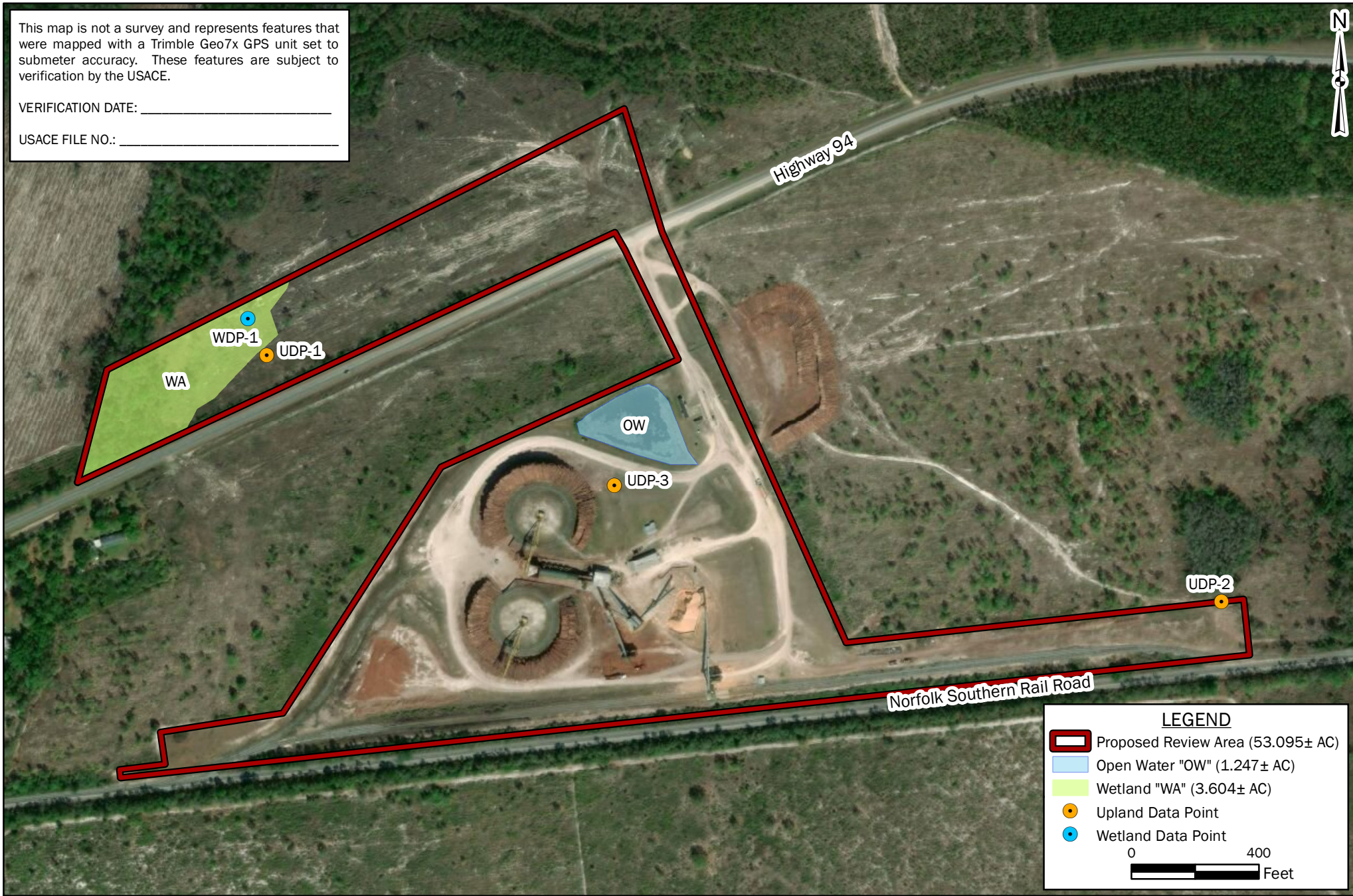



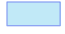



This map is not a survey and represents features that were mapped with a Trimble Geo7x GPS unit set to submeter accuracy. These features are subject to verification by the USACE.

VERIFICATION DATE: _____

USACE FILE NO.: _____



LEGEND

-  Proposed Review Area (53.095± AC)
 -  Open Water "OW" (1.247± AC)
 -  Wetland "WA" (3.604± AC)
 -  Upland Data Point
 -  Wetland Data Point
- 0 400
Feet



**FIGURE 5: WATERS OF THE U.S. DELINEATION MAP
THREATENED & ENDANGERED SPECIES REPORT**

**TWIN PINES MINERALS
ST. GEORGE, CHARLTON COUNTY, GEORGIA**

BASEMAP: Maxar, Vivid Imagery, 3/24/2018 (0.46 m Resolution).

DRAWN BY: DEK
CHECKED BY: CMS
DRAWING DATE: 6/17/2020
REVISION DATE: N/A
TTL JOB NO.: 000180200804.00
APPROX. SCALE: 1 in = 400 ft