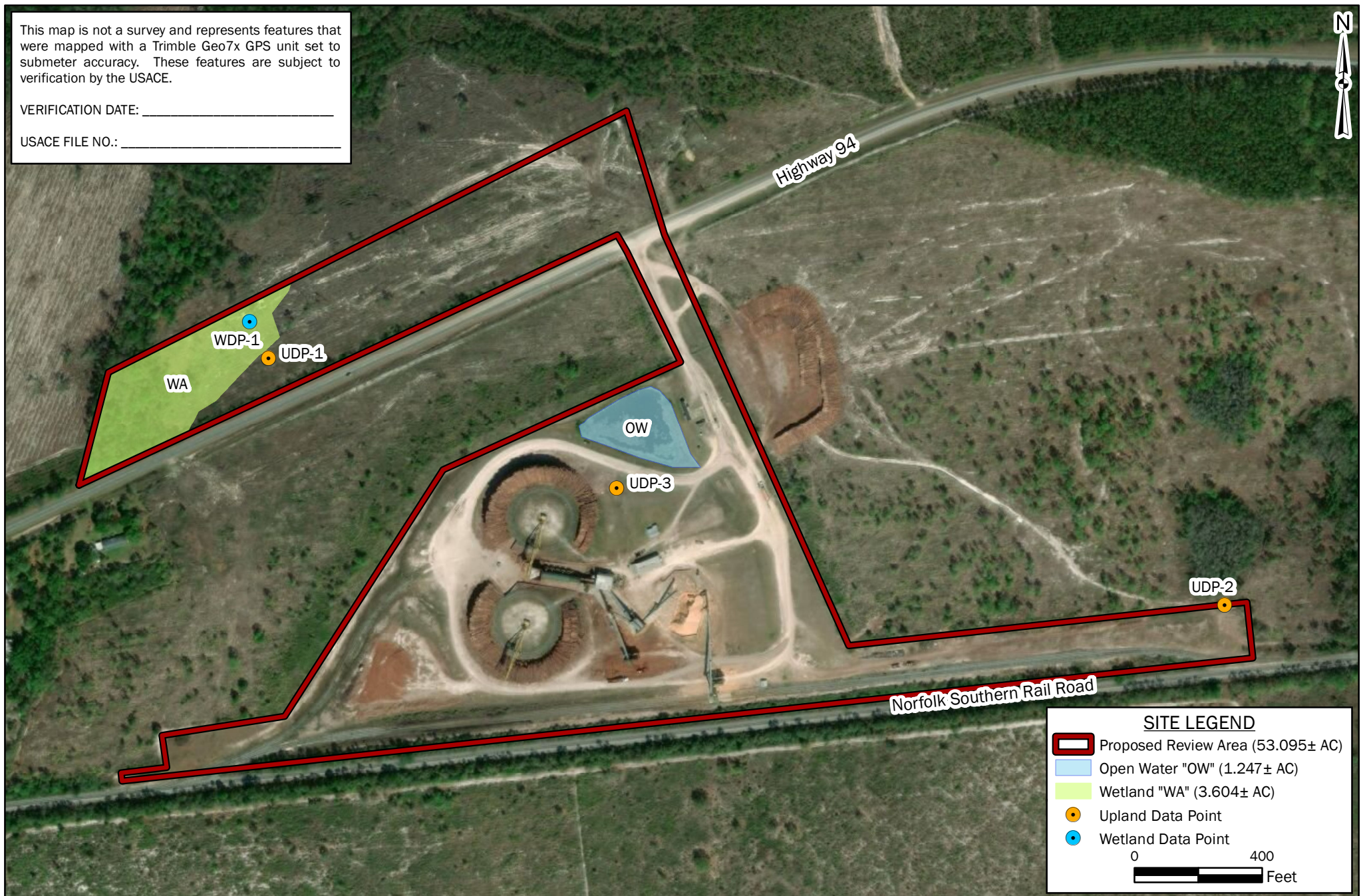


This map is not a survey and represents features that were mapped with a Trimble Geo7x GPS unit set to submeter accuracy. These features are subject to verification by the USACE.

VERIFICATION DATE: \_\_\_\_\_

USACE FILE NO.: \_\_\_\_\_



**SITE LEGEND**

- Proposed Review Area (53.095± AC)
- Open Water "OW" (1.247± AC)
- Wetland "WA" (3.604± AC)
- Upland Data Point
- Wetland Data Point

0 400  
 Feet



**FIGURE 6: WATERS OF THE U.S. DELINEATION MAP**  
**WATERS OF THE U.S. DELINEATION MAP**  
**TWIN PINES MINERALS**  
**ST. GEORGE, CHARLTON COUNTY, GEORGIA**

BASEMAP: Maxar, Vivid Imagery, 3/24/2018 (0.46 m Resolution).

DRAWN BY: DEK
CHECKED BY: CMS
DRAWING DATE: 3/27/2020
REVISION DATE: N/A
TTL JOB NO.: 000180200804.00
APPROX. SCALE: 1 in = 400 ft