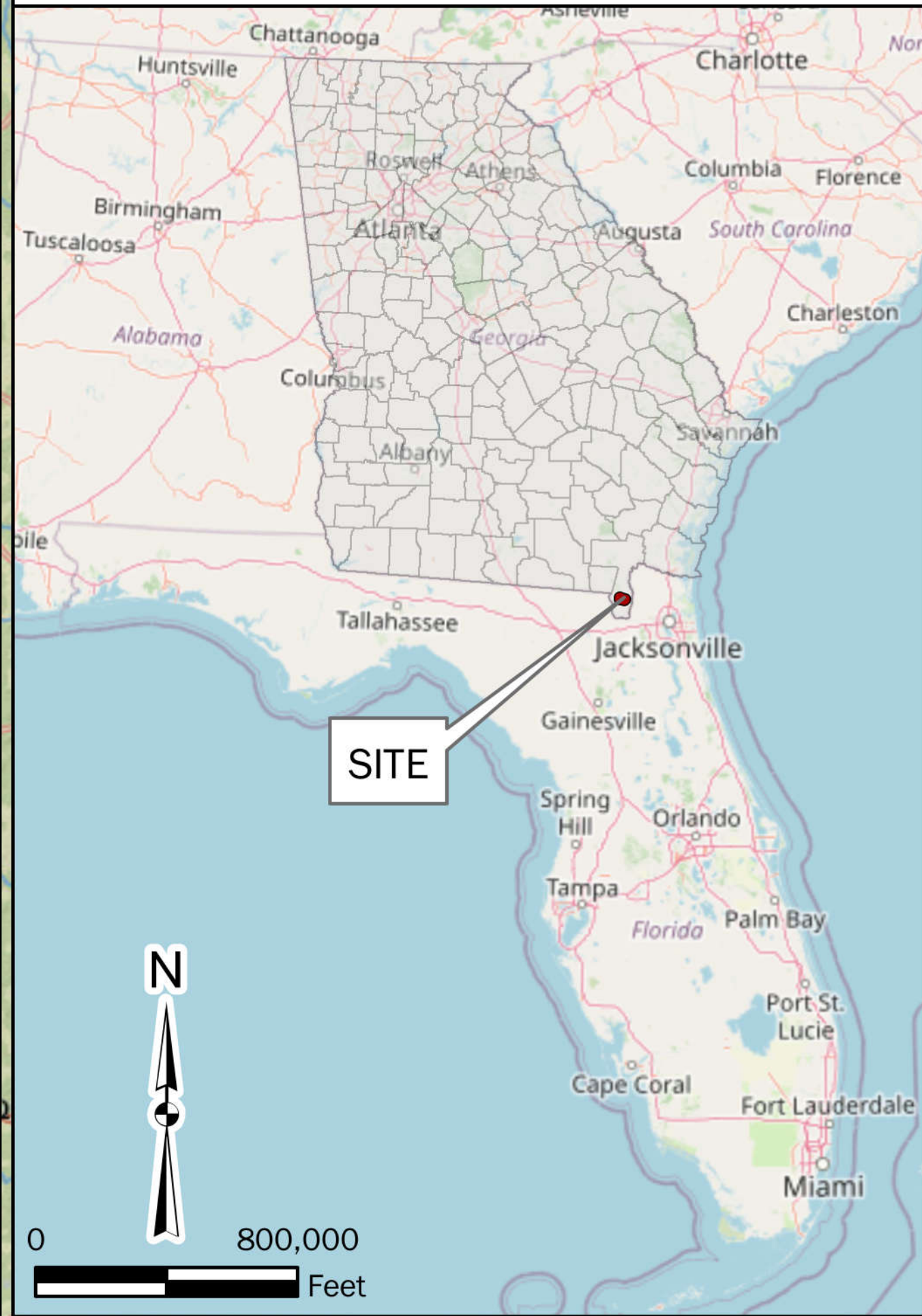


GEORGIA COUNTIES



24-hour Emergency Contact:
Mark Fowler, (205) 435-0001

Site Located At:
Approx. 30.52388°N, -82.116688°W

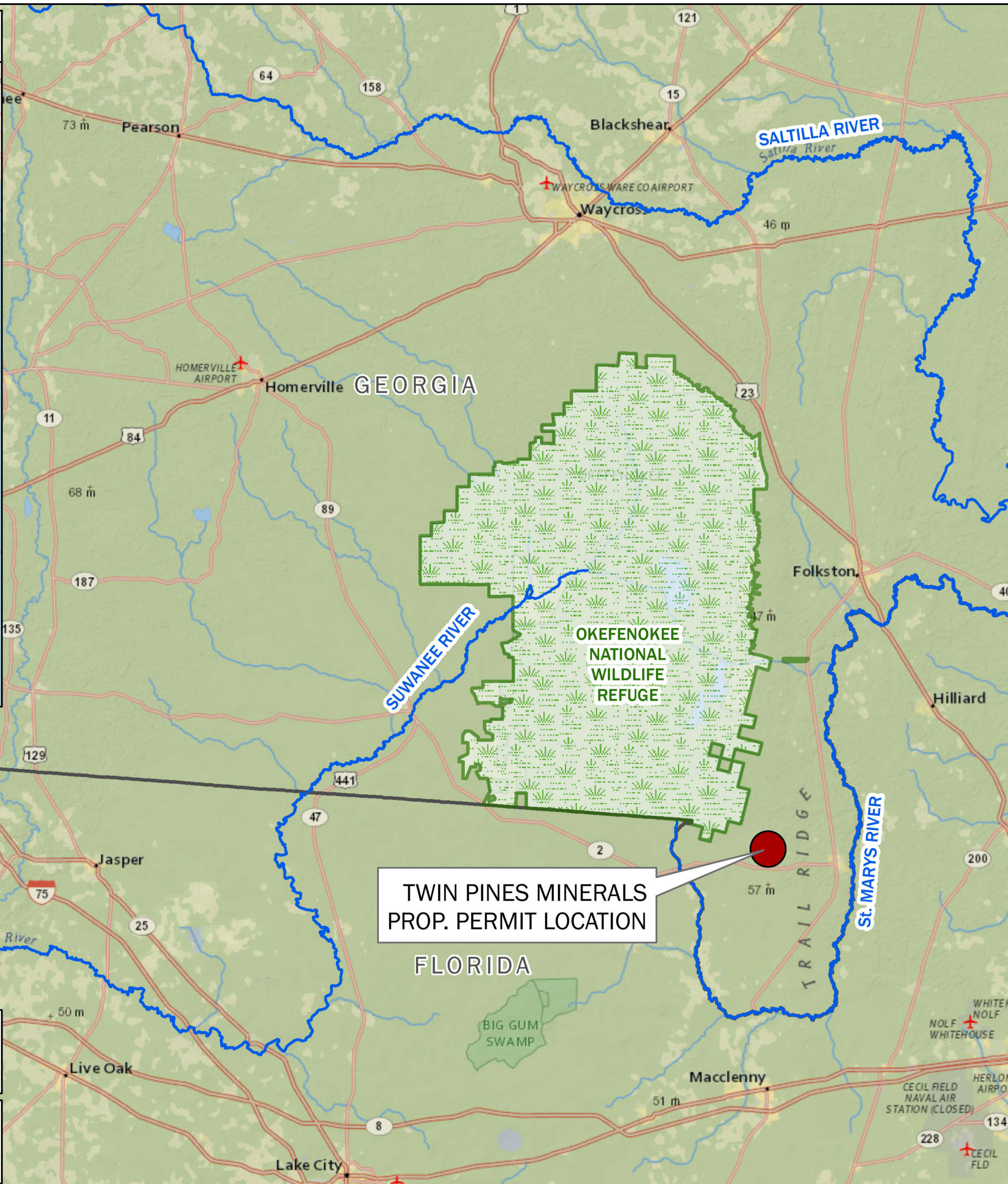


TABLE OF CONTENTS

- Surface Mining Land Use Development Plan
- Figure 1 – Site Location & Topographic Map
- Figure 2 – Adjacent Properties & Aerial Photograph
- Figure 3 – Proposed Site Layout
- Figure 4A – Estimated Progression of Mining
- Figure 4B – Estimated Progression of Land Surface Clearing
- Figure 5 – Process Flow diagram
- Figure 6A – Mining Plan View (Typical)
- Figure 6B – Mining Profile/Cross-Section (Typical)
- Figure 6C – Mining Details (Typical)
- Figure 7A – Erosion Control Details
- Figure 7B – Construction Entry/Exit & Silt Fence Details
- Figure 7C – Culvert Crossing & Waterway Details
- Figure 7D – Rip-Rap Details & Erosional Control Notes
- Figure 8 – Existing Drainage Patterns and Outfalls
- Figure 9 – FEMA Flood Hazard & FIRM Panel Map
- Figure 10 – Post-Mining Restoration Plan & Modeled Water Table Elevation Change
- Figure 11 – Existing Piezometer Location Map
- Figure 12 – Existing Shallow “Wetlands” Piezometer Location Map
- Figure 13 – Staff Gauge Location Map
- Figure 14 – Rain Gauge Location Map
- Figure 15 – Proposed Piezometer Location & Estimated Mining Timeline Map
- Figure 16 – Predictive Drawdown Due to the Moving Mine
- Figure 17 – Typical Piezometer Construction Detail
- Figure 18 – Surface Water & Background Water-Quality Monitoring Locations

Service Layer Credits: © OpenStreetMap (and) contributors, CC-BY-SA
National Geographic, Esri, Garmin, HERE, UNEP-WCMC, USGS, NASA, ESA, METI, NRCAN, GEBCO, NOAA, increment P Corp.



SAUNDERS DEMONSTRATION MINE TWIN PINES MINERALS ST. GEORGE, CHARLTON COUNTY, GEORGIA

INSET BASEMAP: Open Street Map; BASEMAP: National Geographic World Map (See Service Layer Credits).

DRAWN BY: DEK
CHECKED BY: SGR
DRAWING DATE: 6/18/2020
REVISION DATE: N/A
TTL JOB NO.: 000180200804.00
APPROX. SCALE: 1 in = 25,000 ft