

[#SuwanneeCleanup](#)

You can also pick up trash and post pictures or video with this hashtag.



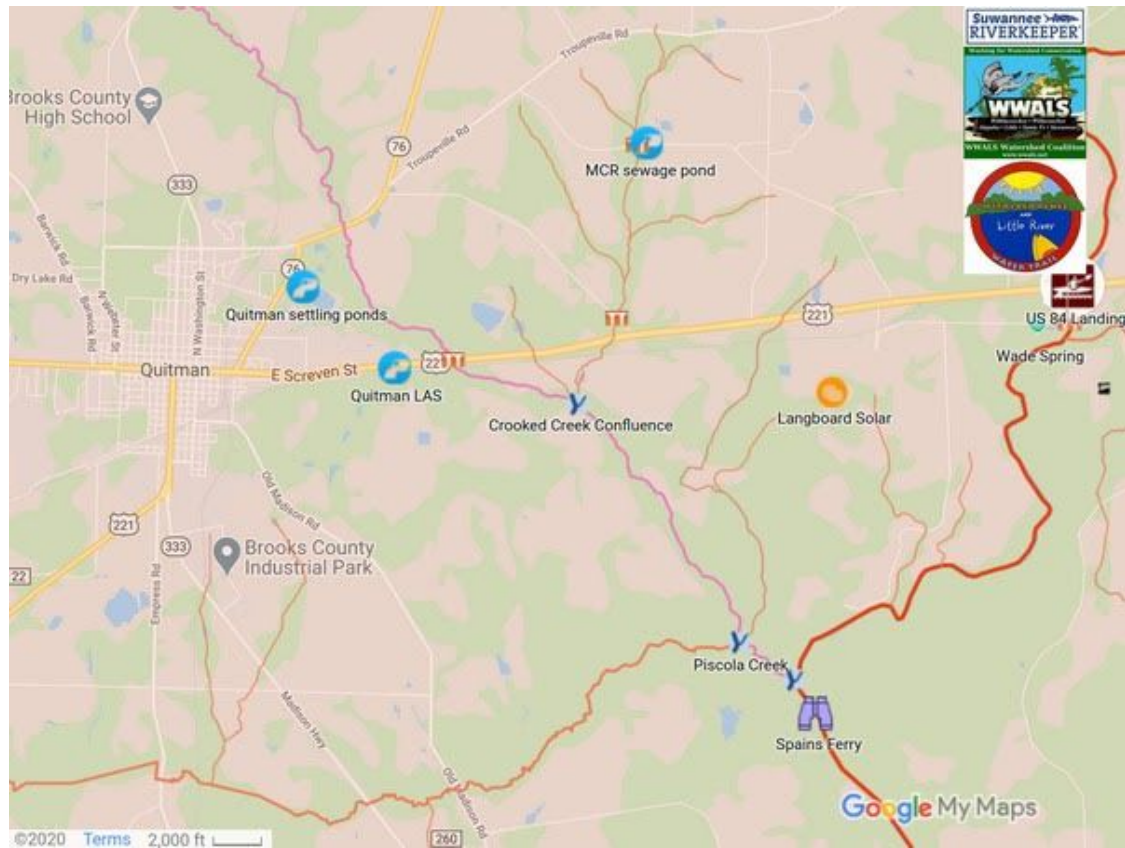
*WWALS Executive Director Gretchen Quarterman picked up trash on a road. #SuwanneeCleanup, 2020-04-22*



*Randy Madison on the Suwannee River in Columbia and Hamilton Counties, Florida, and Clinch County, Georgia. #SuwanneeCleanup, 2020-04-22*

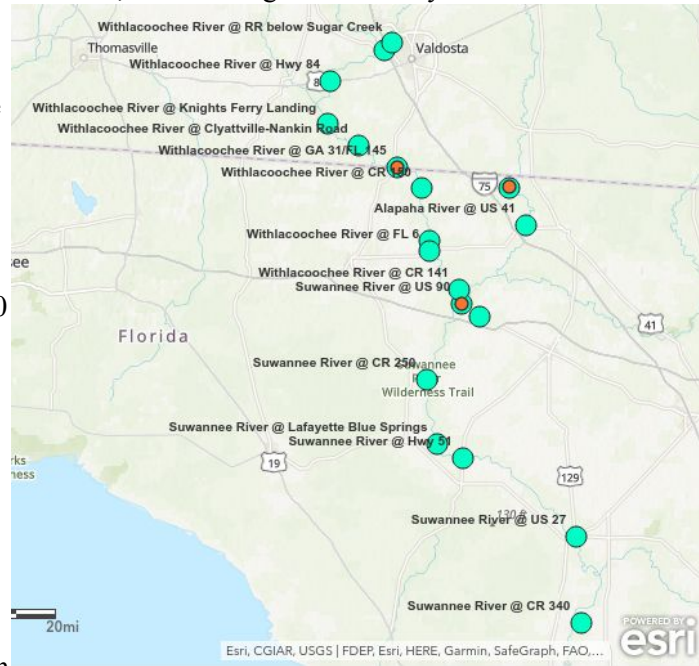


*Suwannee Riverkeeper John S. Quarterman at State Line Boat Ramp, Withlacoochee River, for Waterkeepers Florida toast Earth Day 2020-04-22*



*Map: Quitman and Okapilco Creek to Withlacoochee River, Withlacoochee and Little River Water Trail.*

While tests for human waste were not definitive, other testing conducted by FDEP showed that DNA markers for ruminants were often very high at multiple stations at the state line and in Florida. There are not enough deer, sheep, or goats to account for the magnitude of the problem. The only ruminants numerous enough are domestic cattle, *Bos taurus*, and there are about 10,500 of those in Brooks County. Many are on a creek where WWALS has repeatedly found very high fecal bacterial levels (*E. coli*) after rain events. But that creek also has low flow and volume compared to Okapilco Creek, so it appears that there is substantial dilution as that water enters Okapilco Creek, and even more when it enters the even bigger Withlacoochee River.



Brooks County is not the only source of contamination. After big rain events, *E. coli* counts often go high upstream of Valdosta on the Withlacoochee and Little Rivers, and upstream of Quitman on Okapilco Creek. Plus there are known and suspected Florida sources of contamination on the Withlacoochee and Suwannee Rivers.

WWALS, Lowndes County, Valdosta, and Madison Health of Madison County, Florida, continue testing. Valdosta now posts its results on the city's own website, and FDEP posts