

How You Can Help

Suwannee Riverkeeper for WWALS Watershed Coalition, Inc. (WWALS) asks you to partner to detect and clean up bacterial contamination in the Suwannee River Basin.

If your organization is collecting water quality data in the Suwannee River Basin, we ask you to publish it online so everyone can see it.

Or you could partner on a grant application we are working on for next year. WWALS is currently working to identify implementation partners and sites where Best Management Practices (BMPs) might be implemented to reduce bacterial contamination in the River and its tributaries. You may already be doing work that could be counted as in-kind towards the grant match, or you could contribute cash. In order to prepare a competitive and high-quality application, we are starting conversations with partners early.

Perhaps you or your organization would like to contribute to our WWALS Volunteer Water Quality Monitoring Program. This program has directly detected contamination and leads to sources. It has also helped persuade others to test. For example, the City of Valdosta is now testing three times a week, forty river miles down the Withlacoochee River to the state line, plus one location on Okapilco Creek in Brooks County, Georgia. Yet WWALS continues to be the first and only organization testing in new areas, following contamination upstream, as well as on the weekend.

Thanks to a generous grant from Georgia Power, we are buying more testing kits, so we can train more testers and get them testing, in addition to our several new testers in recent months. In addition to the Withlacoochee and Little Rivers and Okapilco and other creeks, we also test on the Alapaha River, and occasionally on the Suwannee, Santa Fe, and the Okefenokee Swamp.

We could use even more kits and supplies than that grant can fund, and that grant doesn't cover other types of equipment that we could use.

Beyond all this, you can help with eco-tourism marketing to show everyone that the situation is improving.

There are also many other ways you can help, many of which don't require money. See Attachment A.

We look forward to working with you and your organization on cleaning up our rivers and repairing the decades-long stigma on them.

For the rivers and the aquifer,

John S. Quarterman, Suwannee RIVERKEEPER®, 229-242-0102
Dr. Tom Potter, Senior Vice President, Chair, Science Committee

Attachments:

- A. Ways you can help
- B. A recent example extract from the WWALS Composite Results Spreadsheet
- C. What do these numbers mean?
- D. Credit Where Credit Is Due

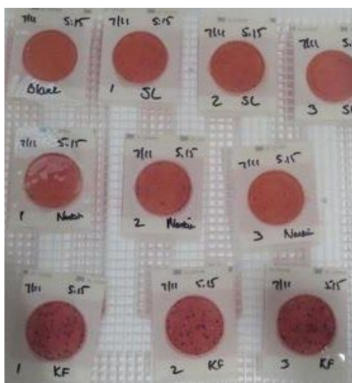


Photo: Suzy Hall, of Incubated PetriFilms for the Withlacoochee River at State Line, Nankin, and Knights Ferry Boat Ramps: 133 (OK), 600 (bad), and 5,233 (horrible) cfu/100 mL E. coli, respectively, Samples collected by Michael and Jacob Bachrach, [2020-07-11](https://www.wwals.net/2020-07-11)