

Painting: Turket Falls, Alapahoochee River, Hamilton Co., FL, by Julie Bowland

Sinks or Siphons

Through cavernous limestone openings the Alapaha River departs the river bed into two sinks or siphons about 3 miles downstream of Sasser Landing and 1 mile upstream from Jennings Bluff Launch. After about 10 miles underground, the water emerges in the Alapaha Rise on the Suwannee River. At low water, the river bed downstream is a sandy path with puddles, good for hiking. With higher water, the Alapaha flows all the way to the Suwannee.

1. Upstream on the west riverbank is the Alapaha River Sink, the Suck Hole, or the Devil's Den (30.5854, -83.052728).
2. Downstream the river goes into the Dead River whitewater ¼ mile, into The Siphon (30.57912, -83.053276).

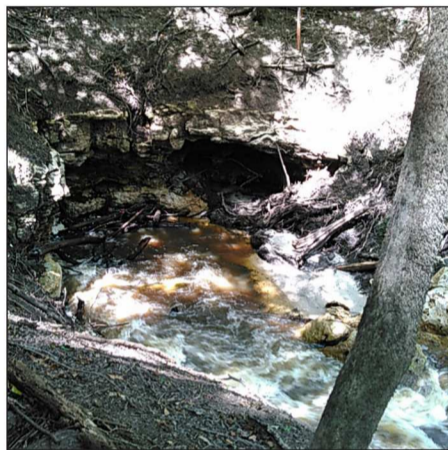


Photo: The Siphon, Dead River, Hamilton County, FL, by John S. Quarterman

Water Levels

Alapaha River water levels fluctuate, and the river may be canoeable or floatable only a few weeks or months per year. All the record high levels have been in January through April, but the Alapaha River can be high in almost any other month. Paddle times may vary widely depending on ability of the paddler and the level of the water; going may be especially slow at low water levels, due to deadfalls (fallen trees) in the river.

Summary Access Table

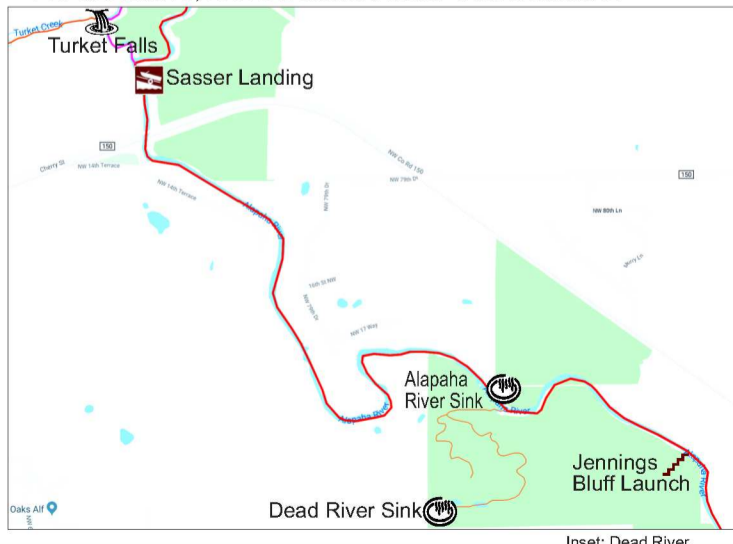
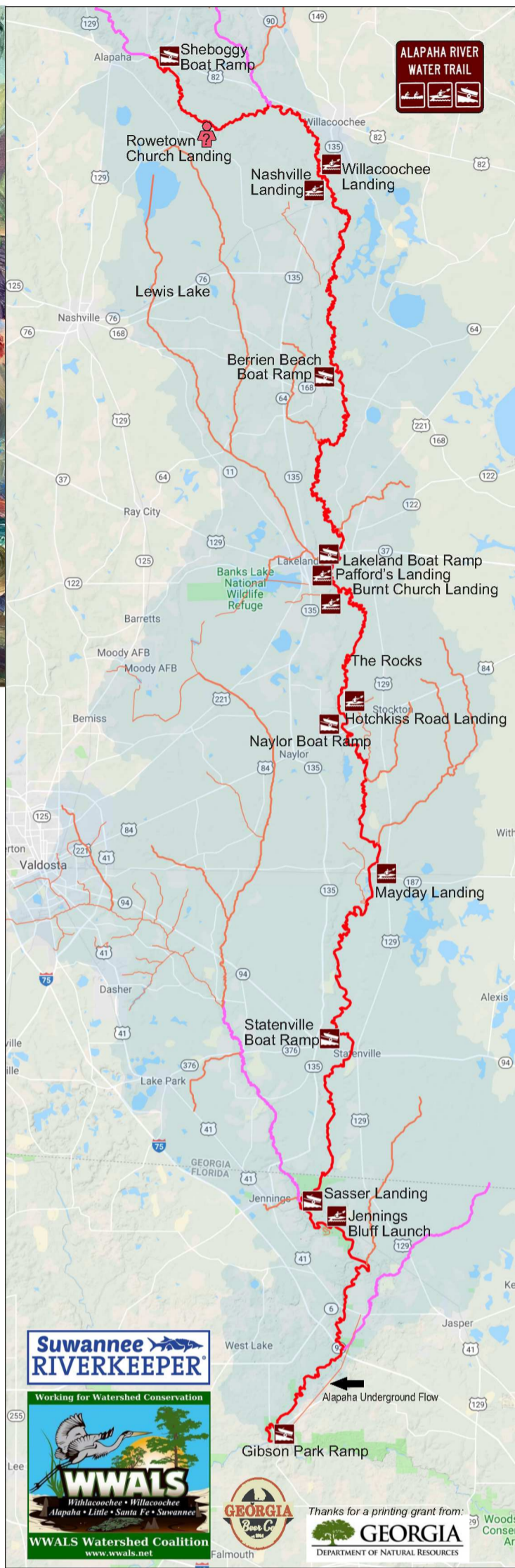
ARWT Miles	Access Point	Alapaha River Site keys	Miles Next	Paddle Hours	Latitude Longitude	Low	High	Gauge
128.72	Sheboggy Boat Ramp @US 82, Berrien Co.		19.02	9.5	31.386279 -83.191609	215.3' (7.7')	218.2' (10.6')	Alapaha
109.7	Nashville Landing @GA 135, Berrien Co.	1	0.03	0.0	31.301521 -83.054924	215.3' (7.7')	218.2' (10.6')	Alapaha
109.7	Willacoochee Landing @GA 135, Atkinson Co.	2	19.64	9.8	31.303791 -83.053091	215.3' (7.7')	218.2' (10.6')	Alapaha
90.03	Berrien Beach Ramp @GA 168, Berrien Co.		17.03	8.5	31.159076 -83.045554	209.6' (2.0')	218.2' (10.6')	Alapaha
73.0	Lakeland Boat Ramp @GA 122, Lanier Co.		0.25	0.1	31.045456 -83.047068	78.1' (2.0')	85.1' (9.0')	Statenville
72.75	Pafford's Landing, Lanier Co		1.71	0.9	31.043011 -83.042564	78.1' (2.0')	85.1' (9.0')	Statenville
71.04	Burnt Church Landing @GA 135, Lanier Co.		12.5	6.2	31.024737 -83.04895	78.1' (2.0')	85.1' (9.0')	Statenville
58.54	Hotchkiss Road Landing @ Hotchkiss Rd, Lanier Co.		1.24	0.6	30.93669 -83.0406	78.1' (2.0')	84.1' (8.0')	Statenville
57.3	Naylor Boat Ramp @US 84, Lowndes Co.		11.25	5.6	30.92507 -83.03867	78.1' (2.0')	83.1' (7.0')	Statenville
46.05	Mayday Landing @Howell Rd, Echols Co.		14.51	7.3	30.82827 -83.017179	78.1' (2.0')	82.1' (6.0')	Statenville
31.54	Statenville Boat Ramp @GA 94, Echols Co.		10.4	5.2	30.70426 -83.03275	78.1' (2.0')	82.1' (6.0')	Statenville
21.14	Sasser Landing @NW 72 Ct, Hamilton Co.		3.6	1.8	30.60071 -83.07326	65' (4.4')	68' (7.4')	Jennings
17.54	Jennings Bluff Launch @NW 82 Ct, Hamilton Co.		17.94	9.0	30.579864 -83.039308	65' (4.4')	68' (7.4')	Jennings
-0.4	Gibson Park Ramp @CR 751, Hamilton Co.		4.6	2.3	30.437858 -83.093319			Suwannee River

* Paddle Time: hours est. for high water at 2 mph (1 mph or slower at low water)
 † Advisory estimates for feet above sea level (NAVD88) on the indicated Gauge of:
 Low: lowest boatable without a lot of dragging; at or slightly above NWS Low Stage
 High: highest safe; at or slightly below NWS Action Stage

- 1 For high water go to Willacoochee Landing
- 2 For low water go to Nashville Landing



wwals.net/maps/alapaha-water-trail/



Always file a float plan so emergency responders can locate you if an emergency occurs.