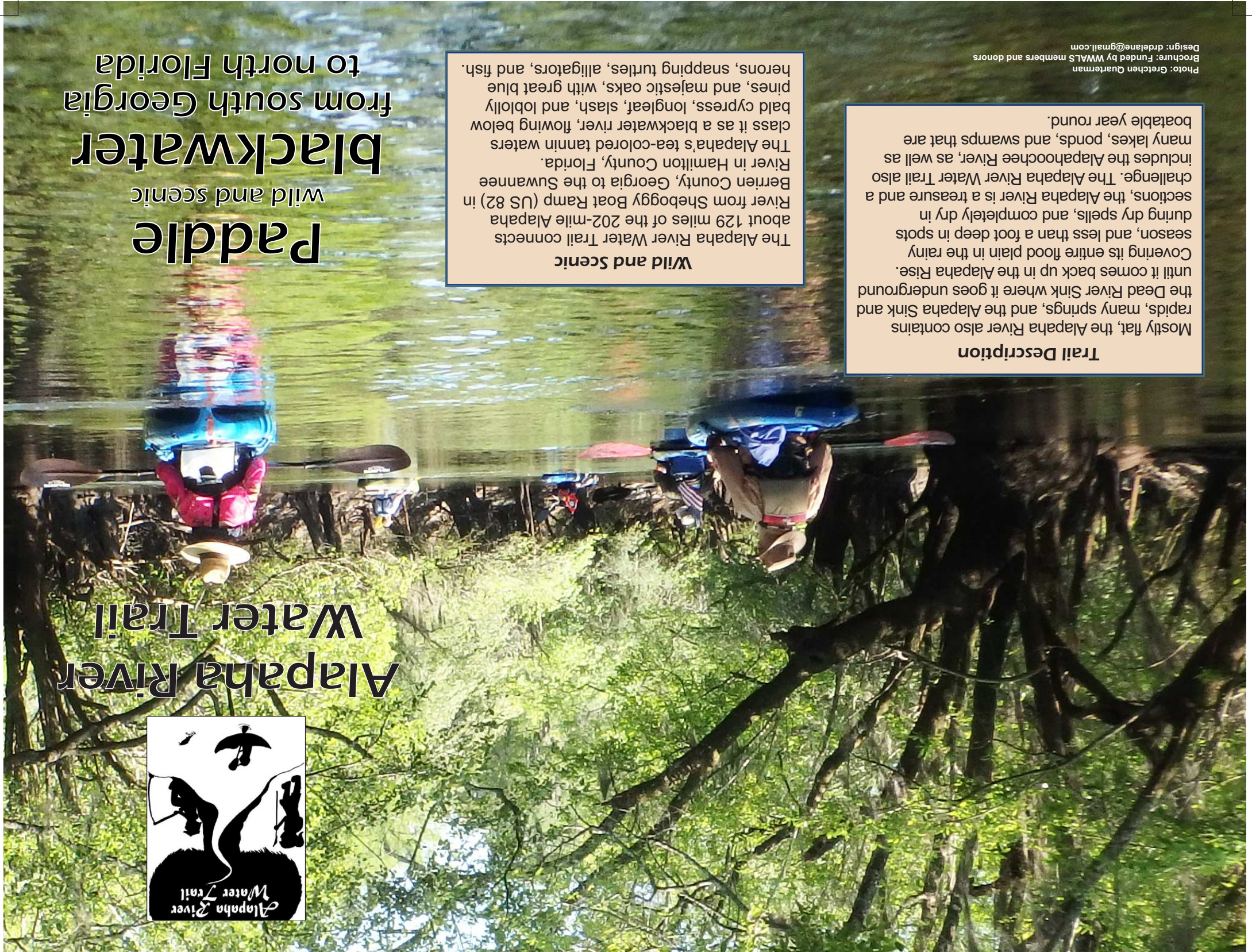


after z fold: outside front panel



# Paddle wild and scenic blackwater from south Georgia to north Florida

## Alapaha River Water Trail



**Wild and Scenic**  
The Alapaha River Water Trail connects about 129 miles of the 202-mile Alapaha River from Sheboggy Boat Ramp (US 82) in Berrien County, Georgia to the Suwannee River in Hamilton County, Florida. The Alapaha's tea-colored tannin waters class it as a blackwater river, flowing below bald cypress, longleaf, slash, and loblolly pines, and majestic oaks, with great blue herons, snapping turtles, alligators, and fish.

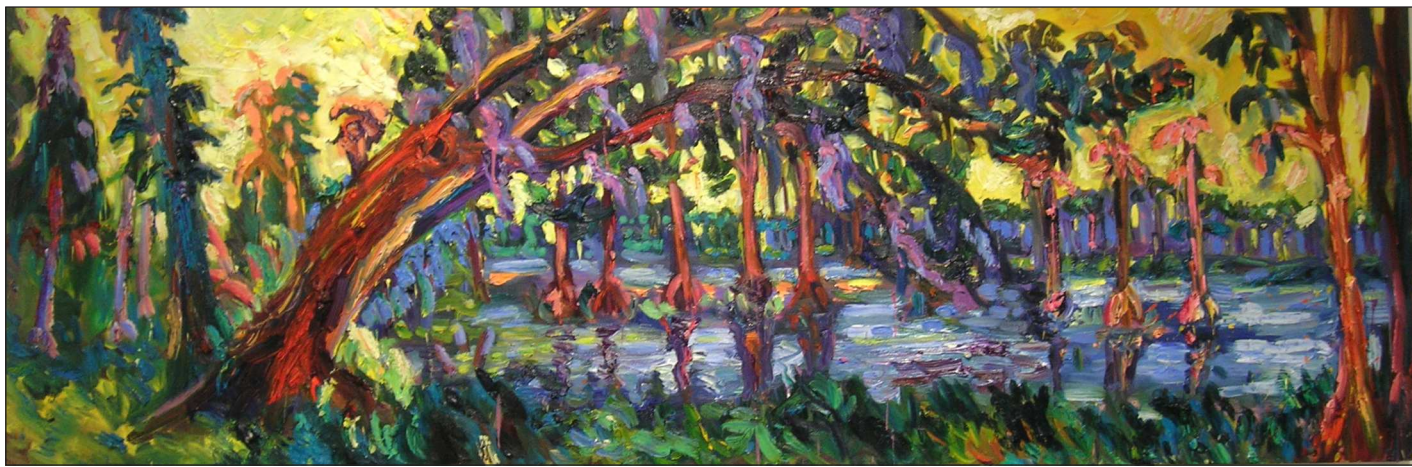
**Trail Description**  
Mostly flat, the Alapaha River also contains rapids, many springs, and the Alapaha Sink and the Dead River Sink where it goes underground until it comes back up in the Alapaha Rise. Covering its entire flood plain in the rainy season, and less than a foot deep in spots during dry spells, and completely dry in sections, the Alapaha River is a treasure and a challenge. The Alapaha River Water Trail also includes the Alapahoochee River, as well as many lakes, ponds, and swamps that are poatable year round.

Photo: Gretchen Quarterman  
Etching: Funded by WWALS members and donors  
Design: drdelain@gmail.com



Photo: John S. Quarterman, Alapaha River, Berrien County, GA

**“Unspoiled, wild, and scenic”** (1979 Soil Survey of Lowndes County) “Jungle-like in its remoteness and luxurious with exotic vegetation, the dark reddish-brown waters of the Alapaha wind through a swampy wonderland teeming with wildlife. (Brown’s *Guide to Georgia*); “A+” for scenery, *Canoeing & Kayaking Georgia*,(Menasha Ridge Press)



Painting: Banks Lake, Lanier County, GA, by Julie Bowland

The Alapaha River Watershed contains **lakes, ponds, and swamps** such as Banks Lake in Lanier County, Grand Bay in Lowndes County, and the Carolina Bays in Atkinson County, renowned for their fishing, alligators, turtles, birds, cypresses, and pines, and streams including the Alapahoochee River.

### Sponsoring Organizations:

Hamilton County, Florida, Tourist Development Council  
Valdosta-Lowndes County Chamber of Commerce  
Valdosta-Lowndes County Tourism Authority  
Hamilton County, FL, Board Of County Commissioners  
Valdosta-Lowndes County Development Authority  
Suwannee River Water Management District  
Berrien County, GA, Board of County Commissioners  
Lanier County, GA, Board of County Commissioners  
Atkinson County, GA, Board of County Commissioners  
Valdosta, Georgia, Mayor and City Council

### Etiquette

1. Carry out all trash with you
2. Camp only where you know you have permission
3. Do not cut or damage living trees
4. Take only photos or videos, leave no trace
5. Control pets or leave them at home
6. Respect wildlife
7. Respect waterfront property:
  - Don't trespass on private property
  - Minimize impacts to shore
8. Be courteous to other water trail users

### Help Protect Your Watershed

Become certified to perform  
Water Quality testing

Report invasive species to [www.EDDMapS.org](http://www.EDDMapS.org)

### Safety

- ✓ Be prepared with life vests and cell phone
- ✓ Let someone know your float plan
- ✓ Alligators and snakes may be present - use caution when bringing small children or pets
- ✓ Be extremely careful with campfires

## Mission



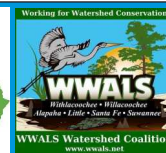
Photo: Gretchen Quarterman, Alapaha River, Berrien County, GA

WWALS Watershed Coalition advocates for conservation and stewardship of the Withlacoochee, Willacoochee, Alapaha, Little, Santa Fe, and Suwannee River watersheds in south Georgia and north Florida through education, awareness, environmental monitoring, and citizen

[www.wwals.net](http://www.wwals.net)



<http://www.garivers.org/gwtc/>



<http://www.wwals.net/maps/alapaha-water-trail/>



SIDE ONE FRONT

after z fold: outside back panel