

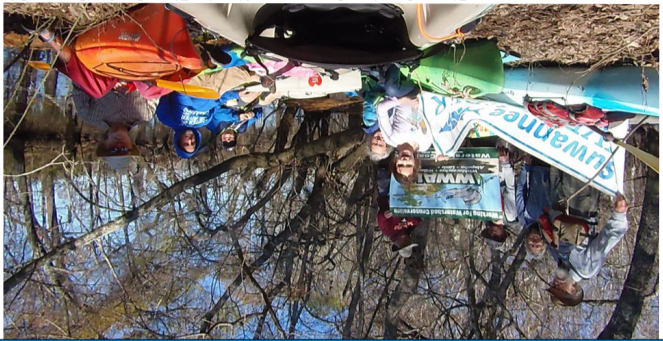
after z fold: outside back panel

SIDE ONE FRONT

after z fold: outside front panel



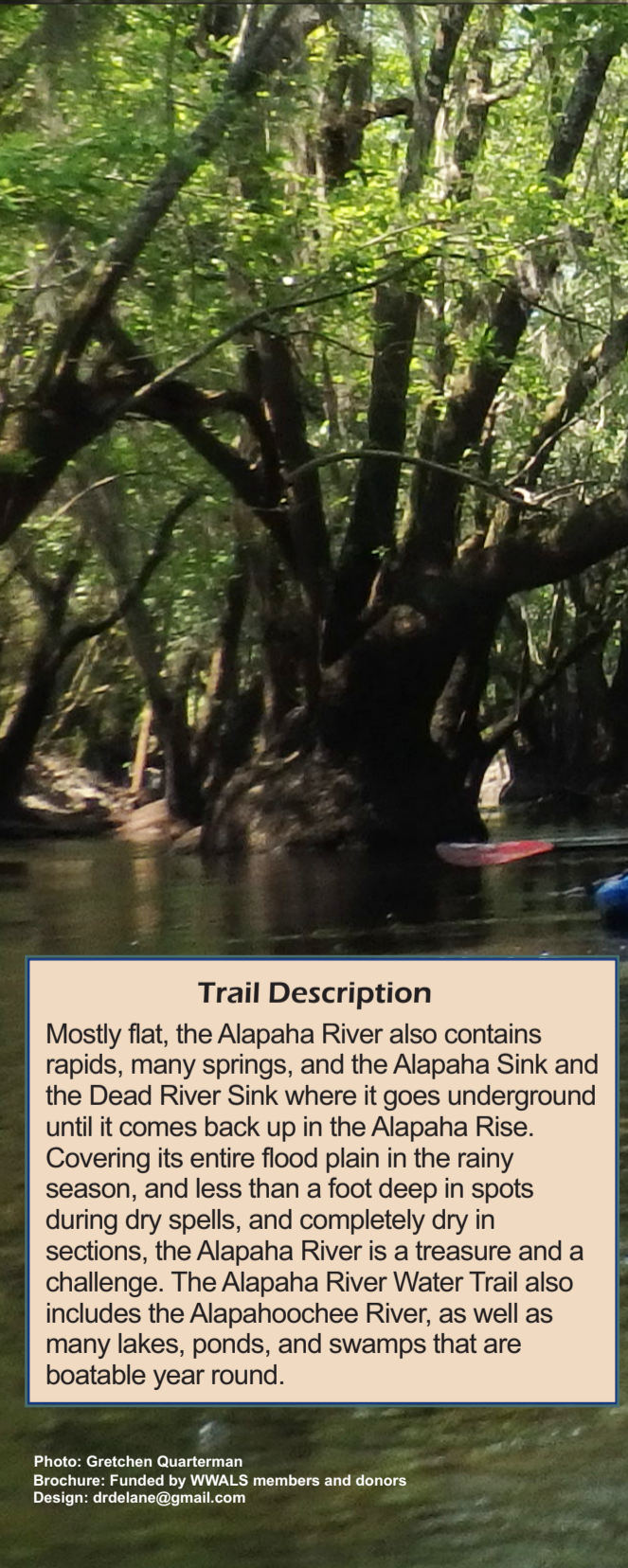
http://www.garivers.org/gw/c/ http://www.wwals.net/maps/alapaha-water-trail/ http://www.wwals.net
WWALS Watershed Coalition advocates for conservation and stewardship of the Little, Santa Fe, and Suwannee River watersheds in south Georgia and north Florida through education, awareness, environmental monitoring, and citizen



Mission

- Be prepared with life vests and cell phone
- Let someone know your float plan
- Alligators and snakes may be present - use caution when bringing small children or pets
- Be extremely careful with campfires

Photo: John S. Quarterman, Alapaha River, Berrien County, GA



Trail Description

Mostly flat, the Alapaha River also contains rapids, many springs, and the Alapaha Sink and the Dead River Sink where it goes underground until it comes back up in the Alapaha Rise. Covering its entire flood plain in the rainy season, and less than a foot deep in spots during dry spells, and completely dry in sections, the Alapaha River is a treasure and a challenge. The Alapaha River Water Trail also includes the Alapahoochee River, as well as many lakes, ponds, and swamps that are boatable year round.

Photo: Gretchen Quarterman
Brochure: Funded by WWALS members and donors
Design: drdelane@gmail.com

Help Protect Your Watershed
Become certified to perform Water Quality testing
Report invasive species to www.EDDMaps.org

- Etiquette**
1. Carry out all trash with you
 2. Camp only where you know you have permission
 3. Do not cut or damage living trees
 4. Take only photos or videos, leave no trace
 5. Control pets or leave them at home
 6. Respect wildlife
 7. Respect waterfront property:
 - Don't trespass on private property
 - Minimize impacts to shore 8. Be courteous to other water trail users

Painting: Banks Lake, Lanier County, GA, by Julie Bowland



"Unspoiled, wild, and scenic" (1979 Soil Survey of Lowndes County) "Jungle-like in its remoteness and luxuriant with exotic vegetation, the dark reddish-brown waters of the Alapaha wind through a swampy wonderland teeming with wildlife. (Brown's Guide to Georgia); "A+" for scenery, Canoeing & Kayaking Georgia, (Menasha Ridge Press)

Sponsoring Organizations:
Hamilton County, Florida, Tourist Development Council
Valdosta-Lowndes County Chamber of Commerce
Valdosta-Lowndes County Tourism Authority
Hamilton County, FL, Board Of County Commissioners
Valdosta-Lowndes County Development Authority
Suwannee River Water Management District
Berrien County, GA, Board of County Commissioners
Lanier County, GA, Board of County Commissioners
Atkinson County, GA, Board of County Commissioners
Valdosta, Georgia, Mayor and City Council

The Alapaha River Watershed contains lakes, ponds, and swamps such as Banks Lake in Lanier County, Grand Bay in Lowndes County, and the Carolina Bays in Atkinson County, renowned for their fishing, alligators, turtles, birds, cypresses, and pines, and streams including the Alapahoochee River.



Alapaha River Water Trail

Paddle
wild and scenic
blackwater
from south Georgia
to north Florida

Wild and Scenic

The Alapaha River Water Trail connects about 129 miles of the 202-mile Alapaha River from Sheboggy Boat Ramp (US 82) in Berrien County, Georgia to the Suwannee River in Hamilton County, Florida. The Alapaha's tea-colored tannin waters class it as a blackwater river, flowing below bald cypress, longleaf, slash, and loblolly pines, and majestic oaks, with great blue herons, snapping turtles, alligators, and fish.