



Berrien Beach

Berrien

Boat Ramp

County, Georgia

Alapaha River

12496 Highway 168, Nashville, GA 31639

[31.159076](tel:31.159076), [-83.045554](tel:-83.045554)

EMA: Berrien County 229-686-6588; Atkinson 912-422-3968; Lanier 229-482-2595



wwals.net



gawatertrails.org

A nice long winter all-day paddle when there is enough water, with sites of two railbridges, many white sand beaches, river birch, cypress, pines, oaks, tupelo, fish, birds, turtles, creeks, and cut-throughs at high water.

Water Levels:

Alapaha, GA, USGS Gauge 02316000:

209.6' (2.0') lowest boatable, or walking

218.2' (10.6') highest safe to not get lost

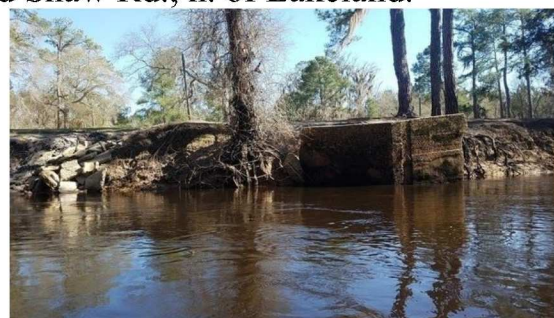
Photos: John S. Quarterman 2017-02-11

Right & left bank (r or l) face downstream



Downstream:

- 0.03 miles, **GA 168 Bridge**
- 0.2 mi., 31.15453, -83.04025, 1, **Berrien Beach**, Lanier Co.
- 0.32 miles, 31.153424, -83.038626, **03110202000607 Creek**, left bank
- 2.17 miles, 31.137711, -83.036486, **Ocilla, Pinebloom & Valdosta Railbridge** was between GA 168 and Pafford Circle. Lanier County
- 2.94 miles, 31.130769, -83.037284, **03110202006771 Creek**, left bank
- 3.91 miles, 31.124738, -83.042658, **03110202000603 Creek**, left bank
- 5.66 miles, 31.123131, -83.05761, **Cross Creek**, r, Lanier County
- 6.33 miles, 31.115572, -83.057089, **03110202006772 Creek**, right bank
- 6.96 miles, 31.109921, -83.058588, **03110202006783 Creek**, left bank
- 7.68 miles, 31.106014, -83.059055, **03110202006787 Creek**, left bank
- 8.19 miles, 31.101379, -83.058658, **Marshall Deadfall**, dead pine tree across the river, discovered by [\(photo by\)](#) Robert Marshall.
- 9.73 miles, 31.092103, -83.062177, **03110202000602 Creek**, left bank
- 10.08 miles, 31.0884656, -83.0635215, **Sandy Ben beaches**, good lunch stop
- 11.4 miles, 31.081907, -83.055886, **03110202001825 Creek**, right bank
- 13.12 mi., 31.07083, -83.05306, **Ben neck**
- 15.57 mi., 31.06059, -83.04163, **Ben Cr.**, l, old River Rd, Lakeland, Lanier Co.
- 16.07 miles, 31.053811, -83.039627, **Waycross & Western Railbridge**, Incorporated 1912, closed 1925. End Shaw Rd., n. of Lakeland.
- 16.64 mi., 31.047641, -83.043858, **03110202001827 Creek**, left bank
- 16.74 miles, 31.046192, -83.043476, **Capt. Henry Will Jones Bridge**, GA 122, GA 37, US 221, US 129 east of Lakeland, GA, Lanier County.



16.77 miles, 8.5 hours: right bank, **Lakeland Boat Ramp @ GA 122**, Below GA 122 bridge, Lakeland, GA 31635, Lanier County, GA.

Upstream:

- 0.73 miles, 31.165593, -83.040973, **Mud Creek**, left bank
- 11.17 miles, 31.2405, -83.04812, right bank, **Riverside Church**, 1600 Riverside Road, Berrien County, about 9 miles south of Willacoochee
- 17.79 miles, 31.2899, -83.0481, **Georgia and Florida Railway Bridge**, Beyond end of Atkinson Co. 208, Atkinson, Berrien Counties
- 19.17 miles, 31.303024, -83.053357, **Pvt. George W. Lee Mem. Bridge**
- 19.18 miles to **Willacoochee Landing**, l, at GA 135, Atkinson Co., GA.
- 19.20 miles to **Nashville Landing**, Right (west) bank, 10921 GA 135, Nashville, GA 31639, Berrien County.

Map backgrounds ©2020 Google; Maps by WWALS.

