

Youngs Mill Creek Landing

Cook

County, Georgia

Withlacoochee River, west bank

13766 Highway 37, Adel, GA 31620

[31.120974](tel:31.120974), [-83.323322](tel:-83.323322)

EMA: Cook County (229) 896-1196;

Berrien County 229-686-6588; Lowndes County 229-671-2790



wwals.net



gawatertrails.org

Expect to get lost in the swamps at least once, and to have to portage over deadfalls. So be prepared to camp at least one night, while owls sing you to sleep and crows wake you up in the morning.

In the new year expect yellow jessamine earliest, then wild native azaleas (*Rhododendron canescens*) blooming in their white to yellow or pink glory. In spring see red maple and white Grancy Greybeard and dogwood trees. In summer you may see the halberdleaf five-large-petaled swamp rose-mallow (*Hibiscus laevis*). Year-round, see loblolly pines, live oaks, water oaks, cypress, river birch, willow, and Spanish moss.

Water Levels, Skipper Bridge USGS Gauge 023177483:

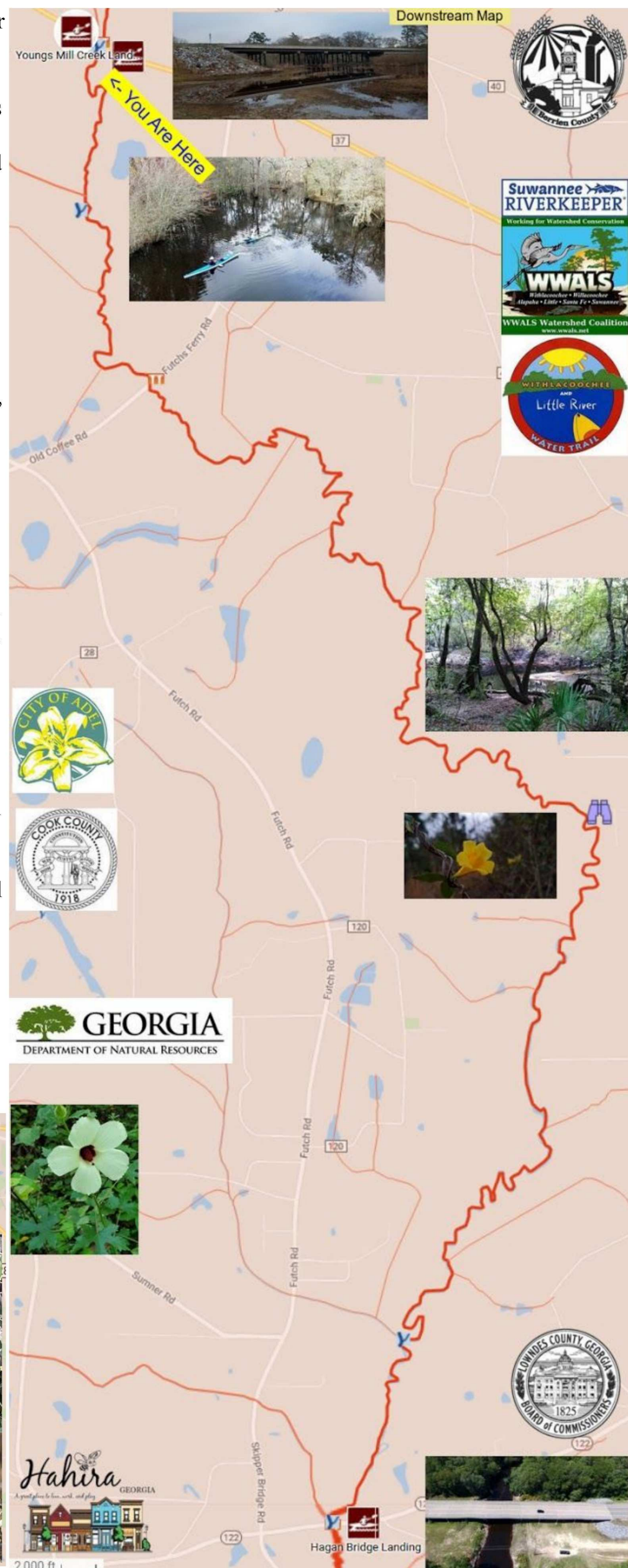
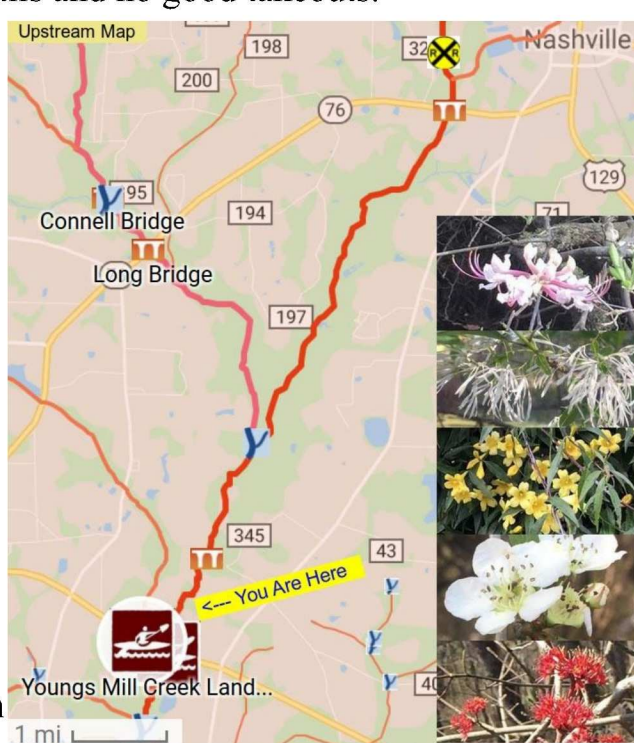
122.6' (2.3') lowest boatable: before walking; 131' (10.7') highest safe

Downstream: Left and right bank (l or r) are facing downstream

- 0.02 miles, 31.119894, -83.321539, **Youngs Mill Creek**, right bank
- Across the river, 31.119208, -83.319036, **Ray City Landing**, 1 GA 37, Nashville, GA 31639; very rough dirt access road
- 1.06 miles, 31.108215, -83.322993, **Bear Creek**, r, drains Adel.
- 1.57 miles, 31.102283, -83.32147, **Boyette Creek** 03110203001337, r
- 2.38 miles, 31.0961, -83.31671, **Futchs Ferry Bridge**, Old Coffee Rd.
- 2.10 miles, 31.096955, -83.321204, **Jackson Coffee Branch** 03110203004027, r
- 3.24 miles, 31.091196, -83.3085, **Mainor Creek** 03110203000545, l
- 3.57 miles, 31.092033, -83.304897, **Futchs Creek** 03110203000751, r
- 4.44 miles, 31.085615, -83.30191, **Merwin Creek** 03110203004071, r
- 5.13 miles, 31.08012, -83.296242, **Biles Branch** 03110203000544, l
- 7.55 miles, 31.064956, -83.279578, **Camp Tygart**, left bank
- 8.38 miles, 31.056708, -83.281897, **Bullard Wood Branch** 03110203004174, r
- 8.86 miles, 31.05203, -83.28482, **Bullard Branch** 03110203004166, r
- 9.63 miles, 31.04220, -83.28421, **Pearson Branch** 03110203002737, l
- 10.98 miles, 31.032714, -83.292333, **Tanner Bennett Creek** 03110203000542, l
- 11.05 miles, 31.03185, -83.29187, **Wilson Branch** 03110203002743, l
- 11.68 miles, 31.027253, -83.294981, **Lowndes County**
- 11.75 miles, 31.027103, -83.296071, **Lindsey Branch**, r
- 12.96 miles, 31.014009, -83.301965, **Hutchinson Mill Creek**, r
- 12.98 miles, 31.013856, -83.301859, **Hagan Bridge**
- 12.98 miles, 31.013702, -83.301699, **Hagan Bridge Landing**, left bank, 5110 GA Hwy 122 E, Hahira, GA 31632, Lowndes County

Upstream: even more deadfalls and no good takeouts.

- 0.03 miles, 31.12022, -83.321241, **Williams Bridge**, GA 37
- 1.18 miles, 31.132777, -83.312516, **Old Lois Road Bridge**, site
- 2.53 miles, 31.149313, -83.304303, **New River**, r, Border of Cook and Berrien Counties, drains east Tifton.
- 6.78 miles, 31.197289, -83.27179, **POW Fred L. Belcher Bridge**, Adel Highway (GA 76)
- 5.2 miles, 31.177211, -83.32231, **Long Bridge**, on the New River, GA 76



Photographs: John S. Quarterman; flowers by Bret Wagenhorst

Map background data © google; Maps by WWALS