

facility:

Name of Facility: New Fortress Energy a/k/a NFE; American LNG Marketing; LNG Holdings (Florida) LLC; and Miami LNG (the “Facility”)

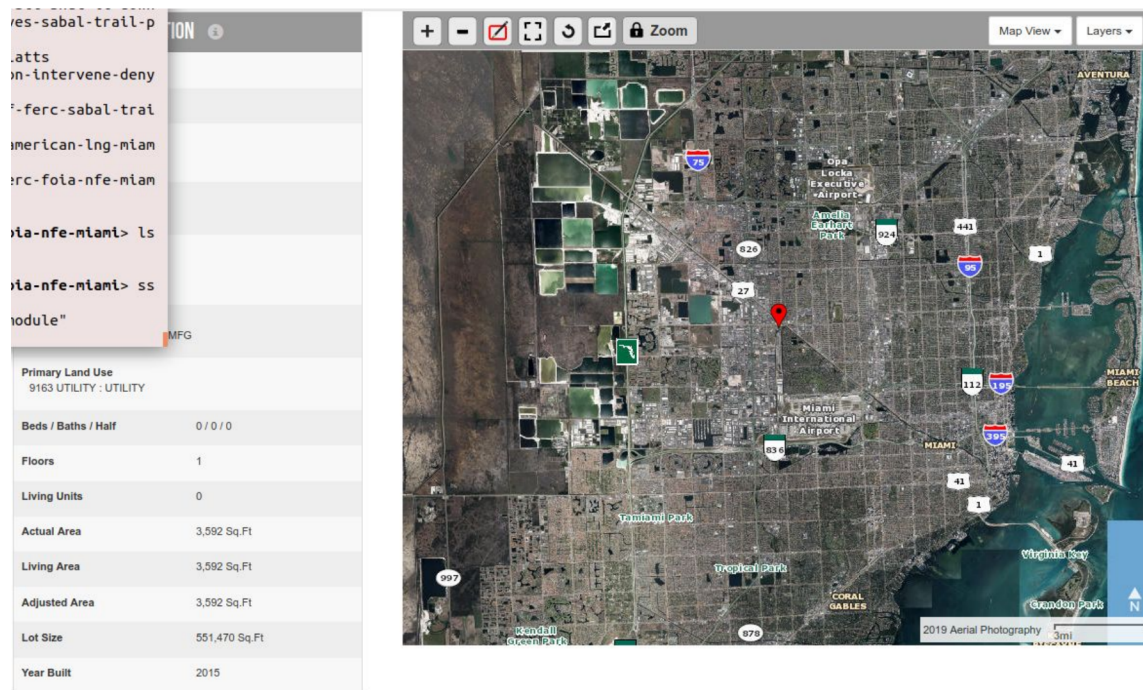
Parent Company: Fortress Investment Group

Location: 6800 NW 72nd Street, Miami, Florida (under 13-acre site adjacent to densely populated Miami Springs, Florida, neighborhood)

Please see the map below, obtained from the Miami-Dade County, Florida Property Appraiser, https://www.miamidade.gov/global/service.page?Mduid_service=ser1469481154653654

via search for the address, 6800 NW 72nd St., Miami, which finds Folio: 30-3014-001-0172.

Clearly this LNG facility for production, storage, and distribution for export is in a densely populated area, which is a public safety issue.



Liquefaction Trains: 1

LNG Liquefaction: 8,260,000 Cubic Feet/Day

Onsite Storage Capacity: 22,302,000 Cubic Feet

LNG Storage at the Dock: We do not know if there are special holding areas at the docks for the loaded LNG ISO containers or where/how the empty containers are degasified and stored between uses.

Boil-Off Gas: We do not know how boil-off gas and vapors are being handled at the Facility or whether boil-off gas is being flared.

LNG Distribution: LNG is transported from the Facility by truck and/or rail in 10,000-gallon ISO Containers that are loaded onto to roll-on/roll-off ships at Port of Miami and Port