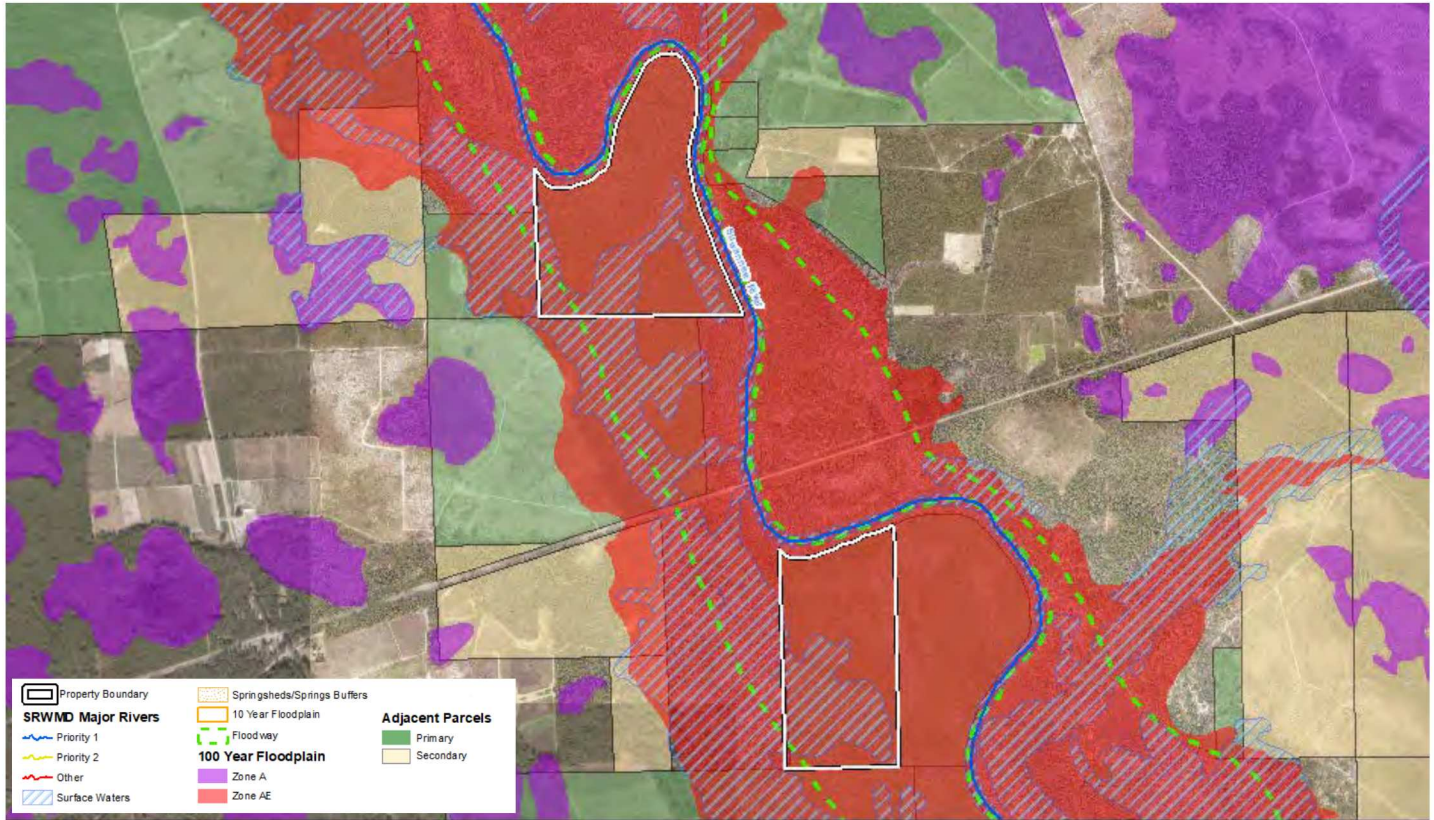




# SUWANNEE TRIAGE ANALYSIS RESULTS



Property Name: Camp and Abel 1

Date: 10/08/2020

Acreage: ± 181.16 ac

County: Hamilton

Transaction Type: Acquisition

Florida Forever: Yes

### Surface Water Protection

Major River: (Y) [Suwannee - Priority 1]

Riverine Surface Waters: (Y) [± 58.67 ac]

### Flood Protection

Floodway: (Y) [± 178.12 ac]

10 Year Floodplain: (Y) [± 181.16 ac]

100 Year Floodplain: (Y) [± 181.16 ac]

### Springs Protection

Springshed: (N)

Adjacency: (Y) [Primary]

### Miscellaneous

PFA: (N)

WSPA: (Y) [Eastern]

BMAP: (N)