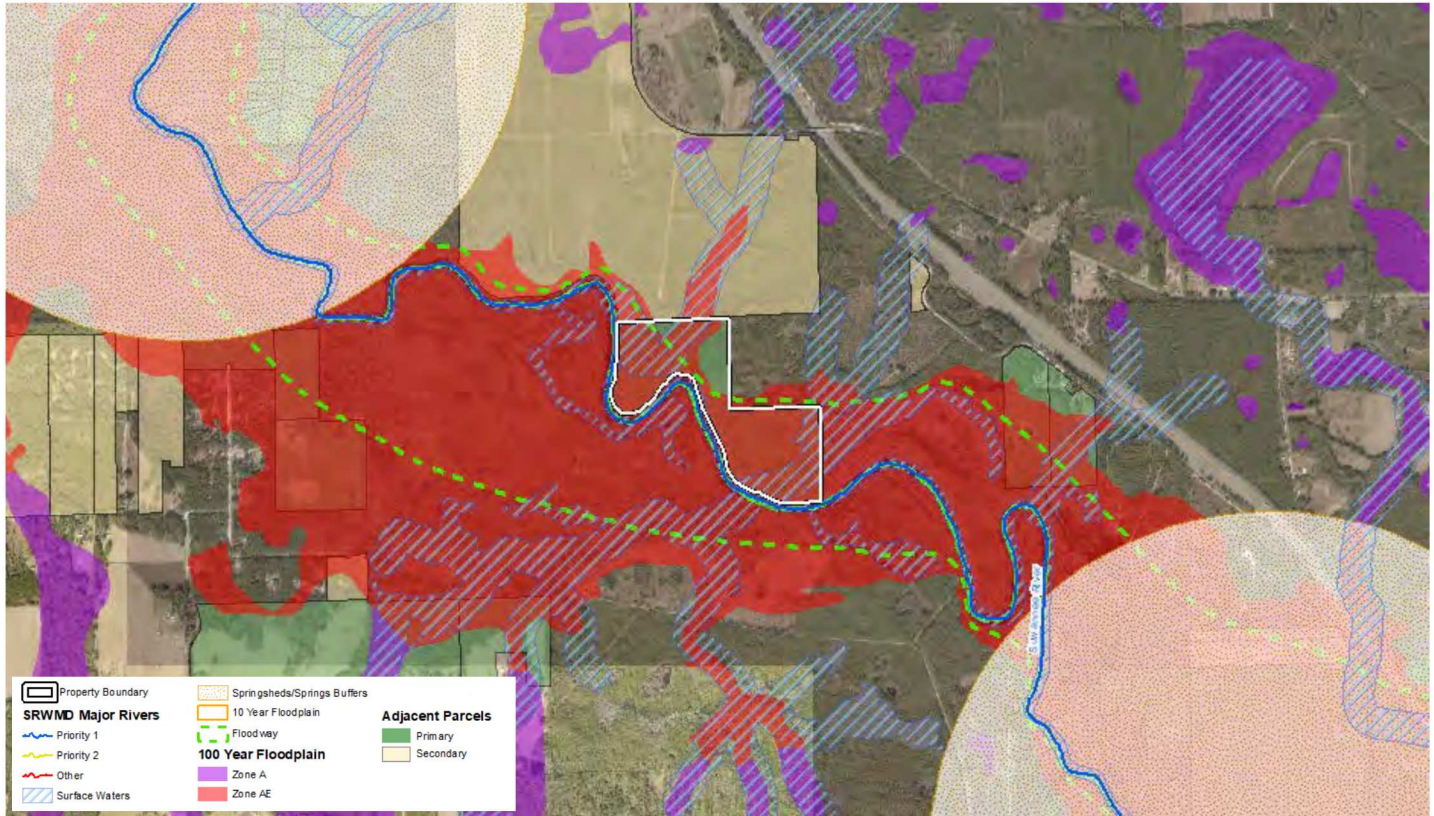




SUWANNEE TRIAGE ANALYSIS RESULTS



Property Name: Camp and Abel 2

Date: 10/08/2020

Acreage: ± 85 ac

County: Hamilton

Transaction Type: Acquisition

Florida Forever: Yes

Surface Water Protection

Major River: (Y) [Suwannee - Priority 1]

Riverine Surface Waters: (Y) [± 35.2 ac]

Flood Protection

Floodway: (Y) [± 68.52 ac]

10 Year Floodplain: (Y) [± 69.53 ac]

100 Year Floodplain: (Y) [± 77.41 ac]

Springs Protection

Springshed: (N)

Adjacency: (Y) [Primary]

Miscellaneous

PFA: (N)

WSPA: (Y) [Eastern]

BMAP: (N)