

December 31, 2020

To: David Barth  
Barth Associates  
david@barthassoc.com

Cc: George Page, Executive Director  
Valdosta-Lowndes County Parks & Rec. Authority  
gpage@vlpra.com

Re: WWALS vision for Lowndes County waterways

Dear Dr. Barth and Director Page,

Thank you for the invitation to provide suggestions for resource protection and recreational access for the Rivers and other waterways of Lowndes County, including access, water quality, land acquisition, etc.

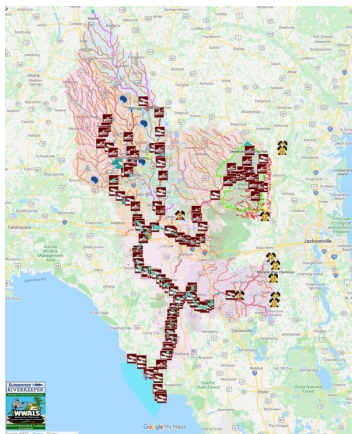
Please see below a list of such suggested improvements.

For the rivers and the aquifer,

John S. Quarterman  
Suwannee RIVERKEEPER®

/s

WWALS Watershed Coalition, Inc.



PO Box 88, Hahira, GA 31632  
850-290-2350

[wwalswatershed@gmail.com](mailto:wwalswatershed@gmail.com)  
[www.wwals.net](http://www.wwals.net)

WWALS is an IRS 501(c)(3) nonprofit  
charity est. June 2012

*WWALS Watershed Coalition advocates for conservation and stewardship of the Withlacoochee, Willacoochee, Alapaha, Little, Santa Fe, and Suwannee River watersheds in south Georgia and north Florida through education, awareness, environmental monitoring, and citizen activities.*

*Suwannee RIVERKEEPER® is a program and a paid staff position of WWALS.*



## Health and Safety

What	Why	Cost
<b>Tamper-proof trash cans</b> and timely pickup at all boat ramps and public landings	People will put trash in a trash can: see Naylor Beach in Naylor Boat Ramp Park.	\$250 - \$1500/each
<b>Fishing line collection containers</b> at all boat ramps and public landings	To encourage fishing, while fish, turtles, other wildlife, and people, don't get snagged on old fishing line.	~\$100/site for supplies, make your own
<b>Cameras</b> at selected problem areas, such as Knights Ferry Boat Ramp	They discourage problem activities such as leaving trash and shooting up signs	~\$200+/ per site
More <b>cleanups</b> at more locations	Removes trash and gets people involved	Mostly volunteer hours, plus trash pickers, safety vests, trash removal, and overhead organizational staff time.
Extend the USGS <b>Flood Inundation Mapper</b> (FIM) to the Little River Confluence.	Need to cover Troupville Boat Ramp Park and future Troupville River Park. <a href="https://wwals.net/?p=54161">https://wwals.net/?p=54161</a>	Valdosta and Lowndes County already paid for LiDAR, so FIM for another mile or two would cost little.
<b>Publicize TMDLs</b> (mercury, lead, Fecal coliform, etc.) Most people fishing do not know about these.	Important for people to know limits on eating fish, and so they will help fix those problems.	Minimal. Include in other press releases, etc.

# Water Quality

What	Why	Cost
Fund the <a href="#">USGS Okapilco Creek at GA 333 Gauge</a> north of Quitman in Brooks County.	Its rainfall and water level and flow metrics would assist in determining what is getting into the Withlacoochee River and when, as well as help convince the sources to ameliorate the problem.	\$15,100 total However, USGS provides \$900 towards each of the Skipper Bridge (Withlacoochee River) and Folsom Bridge (LittlRWMD provides \$5,900 towards Skipper Bridge, so perhaps they or Brooks County could assist. <a href="https://wwals.net/?p=50447">https://wwals.net/?p=50447</a> <a href="http://www.l-a-k-e.org/blog/?p=21402">http://www.l-a-k-e.org/blog/?p=21402</a>
Timely publish the results of <b>Lowndes County's Stream Monitoring</b> program.	That program tests areas nobody else does, such as Franks Creek, location of the Hahira LAS.	Minimal, since the county presumably gets the data in electronic form from its contractor Lovell Engineering Assoc. <a href="http://www.l-a-k-e.org/blog/?p=21727">http://www.l-a-k-e.org/blog/?p=21727</a>
Timely publish <b>Valdosta's chemical tracer and DNA marker</b> water quality test results.	Would help localize sources by type (cattle, horse, pig, human, other).	Minimal, since Valdosta already has the data, which could be added to Valdosta's online publishing of their bacterial test results. <a href="https://preview.tinyurl.com/ya7ksaur">https://preview.tinyurl.com/ya7ksaur</a>
Fund more <b>bacterial water quality testing</b> .	To cover gaps such as Sugar Creek, One Mile Branch, Two Mile Branch, and Three Mile Branch See for context: <a href="https://wwals.net/?p=53260">https://wwals.net/?p=53260</a>	~\$100/site* times 10 to 50 sites *based on SGRC costs, could be significantly reduced with volunteers; WWALS spends about \$10/site/test. The SGRC Regional Water Quality Assessment Project will gather preliminary numbers for areas that have old or no data, all to be uploaded to the AAS website, but there is more to do.
Fund and implement water quality testing for <b>chemical tracers and DNA markers</b> .	Need to test after each big rain to help narrow down the possible sources.	\$5,000 = \$125/test (Jonah Ventures) * 4 sites * at least 10/year. That's DNA tests. Chemical markers \$? See: <a href="https://wwals.net/?p=53340">https://wwals.net/?p=53340</a>
Assist the <b>SGRC 319 grant proposal</b> to GA-EPD about agricultural river contamination of Okapilco Creek.	Affects the Withlacoochee River in south Lowndes County downstream from Okapilco Creek. Many people fish as Knights Ferry, Nankin, and State Line Boat Ramps.	SGRC would be seeking significant in-kind (volunteer) hours for this (WQ testing, landing and paddle clean-up events, etc.) Perhaps people who fish could help.
<b>GIS water quality mapping</b> of test stations, rainfall, NPDES and other wastewater permits, stormwater permits, and sewage spills.	Ongoing sporadic river contamination events have been revealed by the wealth of water quality data from WWALS, Valdosta, FDEP, Lowndes County, Quitman, and other sources.	Mostly staff time to automate and augment the <a href="#">WWALS composite spreadsheet</a> with more data, plus analysis time, to find more sources and work on getting them fixed, as well as to alert the public when and where. SGRC is already working on GIS layers for septic tanks and animal agriculture production facilities.
<b>Water well testing</b> .	TMDLs, fecal bacteria, arsenic, PFOAs, etc.	Ranging from small to quite significant.
<b>Fish contamination testing</b> .	TMDLs, fecal bacteria, PFOAs....	Unknown.

# River Access

What	Why	Cost
<p><b>Troupville River Park</b> on GA 133 across from Val Tech Road, in the historic site of Troupville, former Lowndes County seat, on the Little and Withlacoochee Rivers down to Little River Confluence. <a href="https://wwals.net/?p=53453">https://wwals.net/?p=53453</a></p>	<p>Purchase the 74.14 acres of Land Between the Rivers to add to 49.36 acre VLPR park, to create 123-acre nature preserve and multi-use destination park. Outdoor classes on botany, forestry, geology, archaeology, art. Can be implemented in phases.</p>	<p>\$123,000 to purchase the land, up to \$1.5 million total capex, with GORA as likely grant source, leaving around \$150,000 cash match. Plus up to \$450,000 annual opex, with reductions possible from in-kind implementation and volunteer maintenance, and could be partly offset by park entrance fee. <i>See also <a href="#">WLRWT</a>.</i></p>
<p><b>Troupville River Camp</b>, part of Troupville River Park, on both the Little and Withlacoochee Rivers. <a href="https://wwals.net/?p=51512">https://wwals.net/?p=51512</a></p>	<p>Encourage paddle access and overnight camping, thus promoting eco-tourism. Improve water quality with bathrooms.</p>	<p>Up to \$600,000 for the River Camp facilities: air conditioned bathrooms, hot and cold water, 5 screened sleeping platforms, picnic tables, benches, fire pits, paddle boat racks and river access. Opex could be mostly handled by a live-in (six month term) camp host in an RV, and volunteer assistance. <i>See also <a href="#">WLRWT</a>.</i></p>
<p><b>Little River Road Landing</b> on the Little River.</p>	<p>Public access to the Little River on Lowndes County's acre on Little River Road would break up the 25-mile paddle from Folsom Bridge to Troupville Boat Ramp, thus encouraging more paddlers.</p>	<p>Road grading, slight improvements to river access (no boat ramp needed) trash can, fishing line container, trash pickup. Or put in a boat ramp, from \$2,000 (Berrien County model) to \$250,000 (GA-DNR model). <i>See <a href="#">WLRWT</a>.</i></p>
<p>Fix <b>Folsom Bridge Landing</b> access road off GA 122 to the Little River. A popular fishing spot.</p>	<p>Many potholes. Fixing them would encourage paddling downstream 17 miles to Little River Road Landing, or the 25 miles to Troupville Boat Ramp.</p>	<p>Probably a few thousand dollars of road grading plus perhaps some fill dirt. <i>See <a href="#">WLRWT</a>.</i> Add fishing line collection containers and tamper-proof trash cans.</p>
<p>Fix <b>Hagan Bridge Landing</b> access road off GA 122 to the Withlacoochee River. This is a popular fishing spot.</p>	<p>In better shape than Folsom Bridge Landing, but room for improvement. Encourage paddling the quite interesting 5 river miles downstream to Franklinville Landing.</p>	<p>Probably a few thousand dollars of road grading plus perhaps some fill dirt. <i>See <a href="#">WLRWT</a>.</i> Add fishing line collection containers and tamper-proof trash cans.</p>
<p>Improve parking and access at <b>Franklinville Landing</b> on the Withlacoochee River. Tyler Bridge is popular for fishing.</p>	<p>Encourage paddling from Hagan Bridge and 5.5 mi. downstream to Staten Road or 5.5 more to Langdale Park Boat Ramp.</p>	<p>Probably a few thousand dollars of road grading plus perhaps some fill dirt. Maybe a bit of riverside access improvement. <i>See <a href="#">WLRWT</a>.</i> Add fishing line collection containers and tamper-proof trash cans.</p>
<p>Provide access at <b>Staten Road Landing</b> on the Withlacoochee River. Old access is on private land and posted now.</p>	<p>Encourage paddling from Franklinville Landing, or farther downstream 5.5 river miles to Langdale Park Boat Ramp.</p>	<p>Need stairs or ramp or something at very steep riverbank under southmost bridge, plus posted and graded road right of way access to the river. <i>See <a href="#">WLRWT</a>.</i></p>
<p><b>At-water signs, Staten Road Landing</b>, with maps of entire water trail and etiquette, safety, checklist, etc.</p>	<p>So people can know what to expect upstream and down, with example pictures.</p>	<p>\$65 per set. WWALS already printed and is planting at-water signs for most other access points on the Withlacoochee and Little River Water Trail using a GA-DNR grant. <i>See <a href="#">WLRWT</a> and <a href="#">At-Water Signs</a>.</i></p>

Improve access to <b>Shadrick Sink</b> from the Withlacoochee River and by land in Lowndes County's 96.61 acres at 3526 River Chase Drive. Could be a good fishing location.	Teaching opportunity about sinkholes transferring surface water for miles underground, at least as far as Valdosta's water wells on Guest Road. Only 1.5 miles upstream from Langdale Park Boat Ramp.	A paddle boat ramp at the river, in the \$2,000 Berrien County model, plus some dirt road grading and fill dirt. Also some at-water signs and road signs. See <a href="#">WLRWT</a> and <a href="#">At-Water Signs</a> and <a href="#">Road Signs</a> . Add fishing line collection containers and tamper-proof trash cans.
Clear sandbar and deadfalls at <b>Langdale Park Boat Ramp</b> on the Withlacoochee River.	Encourage paddling from Franklinville and Staten Road Landings or 3.1 mi. to Sugar Creek Landing; 6.8 to Troupville.	Mostly volunteer time. See <a href="#">WLRWT</a> . Add fishing line collection containers.
<b>Sugar Creek Landing</b> at Gornto Road on the Withlacoochee River, next to the YMCA.	Convenient short paddle downstream from Langdale Park Boat Ramp, and onwards 4 miles to Troupville Boat Ramp.	Lowndes County already owns a strip of land from Gornto Road to the river. Needs boundaries posted, and improvements to riverside and access across a thousand feet of cypress knees. See <a href="#">WLRWT</a> and <a href="#">At-Water Signs</a> .
<b>At-water signs, Sugar Creek Landing</b> , with maps of entire water trail and etiquette, safety, checklist, etc.	So people can know what to expect upstream and down, with example pictures.	\$65 per set. WWALS already printed and is planting at-water signs for most other access points on the Withlacoochee and Little River Water Trail using a GA-DNR grant. See <a href="#">WLRWT</a> and <a href="#">At-Water Signs</a> .
<b>Spook Bridge Landing</b> at Old Quitman Highway on the Withlacoochee River. Downstream 8.24 miles down to Knights Ferry Boat Ramp.	Good distance 11.3 river miles from Troupville Boat Ramp, greatly preferable to highway abutment access at US 84.	Land purchase or easement from Langdale Company, significant entrance road and river access improvements, plus trash can, trash pickup. Add fishing line collection containers and tamper-proof trash cans.
<b>At-water signs, Spook Bridge Landing</b> , with maps of entire water trail and etiquette, safety, checklist, etc.	So people can know what to expect upstream and down, with example pictures.	\$65 per set. WWALS already printed and is planting at-water signs for most other access points on the Withlacoochee and Little River Water Trail using a GA-DNR grant. See <a href="#">WLRWT</a> and <a href="#">At-Water Signs</a> .
Clear <b>Grand Bay Canoe trails</b> in Grand Bay Wildlife Management Area.	They're not practical to paddle now. If they were, more people would paddle.	Probably volunteer hours with clippers and chainsaws. See <a href="#">ARWT</a> .
<b>At-water signs, Grand Bay Boat Ramps</b> (both of them), with maps and description of entire water trail plus etiquette, safety, checklist, etc.	So people can know what to expect upstream and down, with example pictures.	\$65 per set. WWALS already printed and is planting at-water signs for most other access points on the Alapaha River Water Trail using a GA-DNR grant. See <a href="#">ARWT</a> and <a href="#">At-Water Signs</a> .
<b>Water Trail road signs</b> , pointing to turnoffs to reach the water access. Different from WWALS at-water signs.	So people know river and swamp access is available. See Staten Road, Sugar Creek, and Spook Bridge Landings, and Grand Bay.	Lowndes County Public Works already planted road signs at Knights Ferry (stolen), Nankin, and State Line Boat Ramps. Need to finish road signs for public landings. See <a href="#">WLRWT</a> and <a href="#">Road Signs</a> .

*ARWT: Alapaha River Water Trail* <https://wwals.net/maps/alapaha-water-trail/> See also [Figure 2](#).

*WLRWT: Withlacoochee and Little River Water Trail* <https://wwals.net/maps/withlacoochee-river-water-trail/> See also [Figure 1](#) and [Figure 1.1](#).

*At-Water Signs:* <https://wwals.net/?p=54270> See also [Figure 1.2](#), [Figure 1.3](#), [Figure 2.1](#), and [Figure 2.2](#).

*Road Signs:* WWALS already paid for and planted ARWT road signs. <https://wwals.net/?p=42782> WWALS purchased WLRWT road signs for upstream locations from GDOT with GA-DNR grant money. <https://wwals.net/?p=54281>

**Figure 1: Withlacoochee and Little River Water Trail in Lowndes County. See [WLRWT](#).**

Lowndes County's Little River Road acre is highlighted.

Spook Bridge is just south of US 84 Landing.

[https://www.google.com/maps/d/u/0/viewer?mid=1n4Q4zSxir\\_T8o4kdkOCRxeCeOrA&ll=30.79523696530492%2C-83.27210285173685&z=11](https://www.google.com/maps/d/u/0/viewer?mid=1n4Q4zSxir_T8o4kdkOCRxeCeOrA&ll=30.79523696530492%2C-83.27210285173685&z=11)

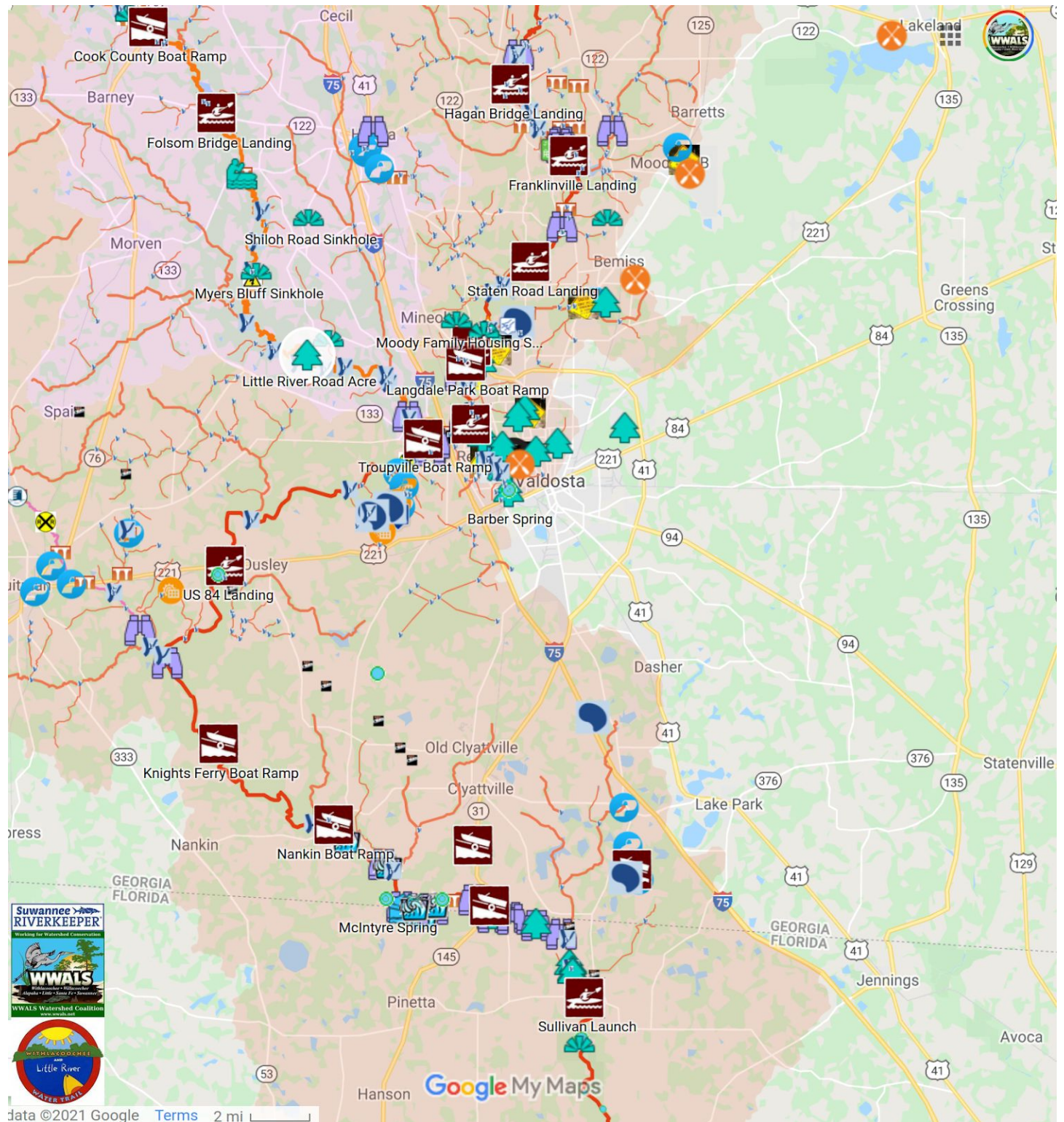


Figure 1.1: Shadrick Sink, Langdale Park Boat Ramp, in WLRWT map. See [WLRWT](#).  
[https://www.google.com/maps/d/u/0/viewer?mid=ln4Q4zSxir\\_T8o4kdkOCRxeCeOrA&ll=30.873939837166613%2C-83.32937848935636&z=14](https://www.google.com/maps/d/u/0/viewer?mid=ln4Q4zSxir_T8o4kdkOCRxeCeOrA&ll=30.873939837166613%2C-83.32937848935636&z=14)

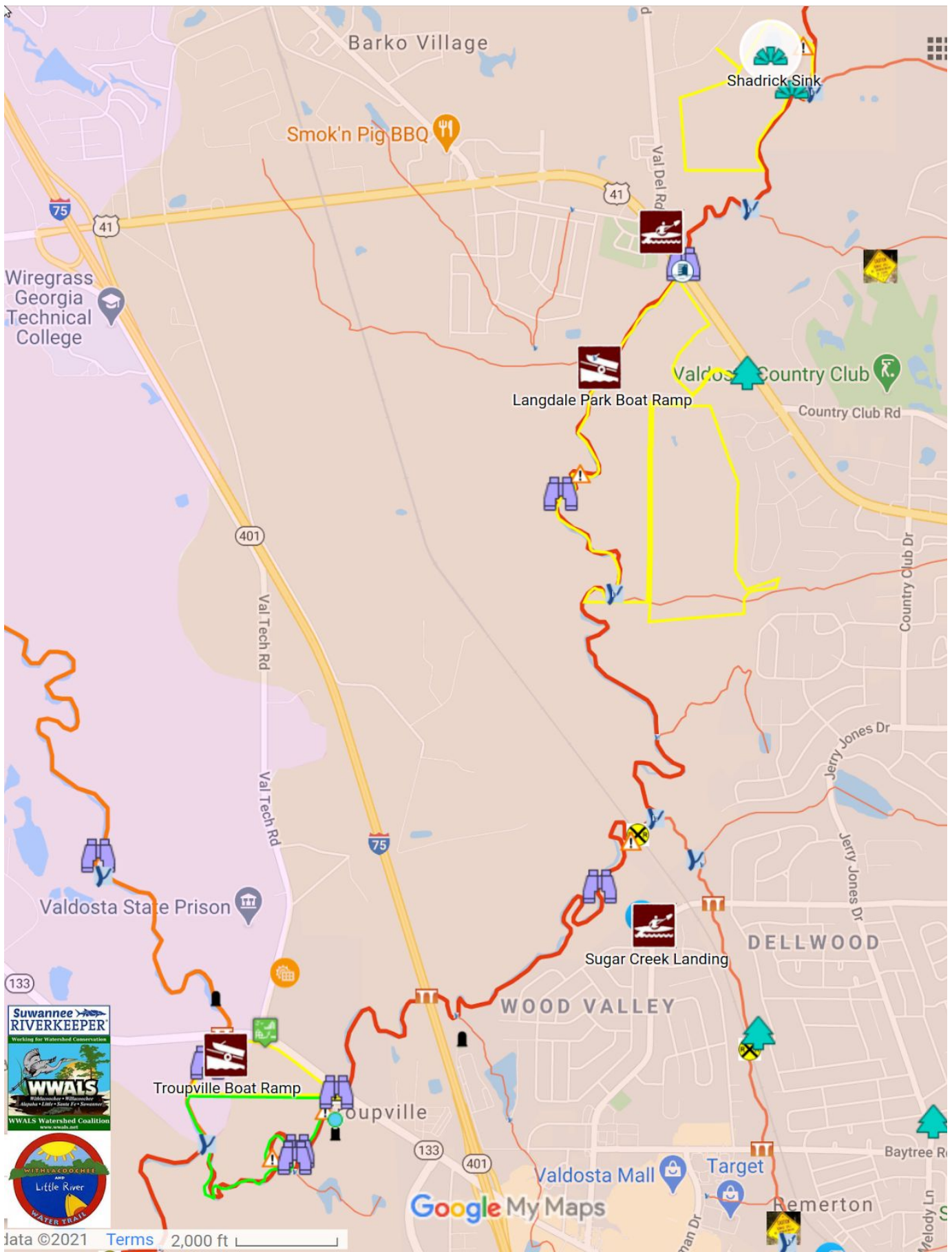
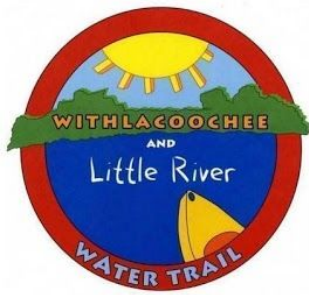


Figure 1.2: Top at-water sign for Withlacoochee and Little River Water Trail. Each location will have these. See [At-Water Signs](#) and [WLRWT](#).



# Withlacoochee and Little River Water Trail

Unspoiled Blackwater Rivers  
in south Georgia and north Florida

Join a WWALS monthly paddle outing!



[gawatertrails.org](http://gawatertrails.org)



[wwals.net](http://wwals.net)

Two dozen landings on 157 boatable river miles in two states.

The **Withlacoochee River** is one of the few undammed left in this country, flowing in its unruly blackwater splendor for 115 miles past cypress, river birch, oaks, and pines through **Georgia**, past Langdale Park, and two of only six second magnitude springs in Georgia, McIntyre Spring and Arnold Springs, with shoals at the state line, and State Line Boat Ramp, site of the *WWALS Boomerang paddle race*.

In **Florida**, past Madison Blue Spring State Park and its first magnitude spring, then many others, to the confluence with the Suwannee River at Suwannee River State Park.

The **Little River** is also an undammed tea-colored blackwater river below Reed Bingham State Park, the venue for the annual WWALS *BIG Little River Paddle Race*, between Adel and Moultrie, Georgia. The Little joins the Withlacoochee just outside Valdosta in Lowndes County, the largest population center in the entire Suwannee River Basin.

## Etiquette

1. Carry out all trash with you
2. Camp only where you have permission
3. Do not cut or damage living trees
4. Take only pictures or videos; leave no trace
5. Control pets or leave them at home
6. Respect wildlife
7. Respect waterfront property
  - Don't trespass on private property
  - Minimize impacts to shore
8. Be courteous to other water trail users

## Safety

1. Be prepared with life vests and cell phone
2. Let someone know your float plan
3. Beware of alligators, snakes, and red wasps
4. Watch small children or pets
5. Be extremely careful with campfires

## Checklist

- Water and food
- Sunscreen & bug repellent
- Whistle, map, spare paddle
- Personal flotation device
- First aid kit & tiedowns
- Rope for shoals
- Clothes:
  - Warm & swim suit
  - Dry & waterproof bag
- Trash bag & trash picker
- Flashlight in case of dark
- Phone, battery, case, lanyard

**WWALS Watershed Coalition, Inc. (WWALS)**, an IRS 501(c)(3) nonprofit charity corporation, advocates for conservation and stewardship of the Withlacoochee, Willacoochee, Alapaha, Little, Santa Fe, and Suwannee River watersheds in south Georgia and north Florida through education, awareness, environmental monitoring, and citizen activities.

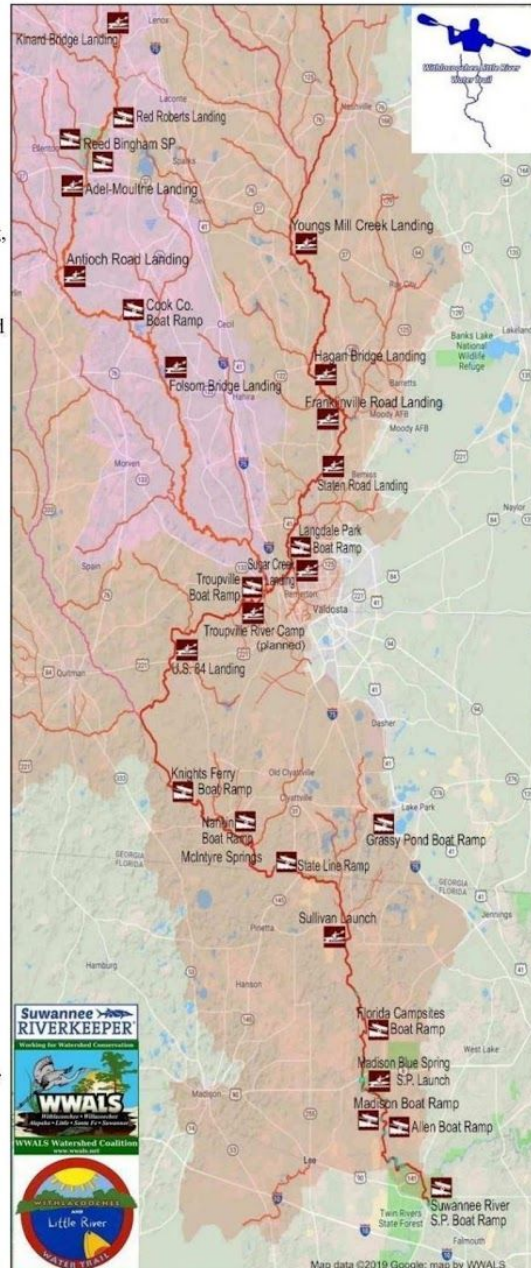
WWALS is the WATERKEEPER® Alliance member for the Suwannee River Basin as Suwannee RIVERKEEPER®.



## Sponsors of this Water Trail:



[wwals.net/maps/withlacoochee-river-water-trail](http://wwals.net/maps/withlacoochee-river-water-trail)

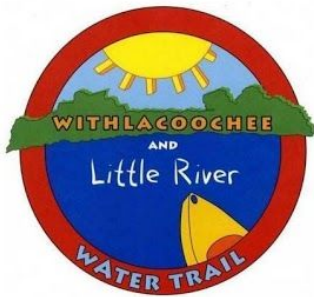


For outfitters, see [wwals.net/water-trails/outfitters/](http://wwals.net/water-trails/outfitters/)

Always file a float plan so emergency responders can locate you

**Help Protect Your Watershed**  
Become certified to perform Water Quality Testing  
Report invasive species to [www.EDDMapS.org](http://www.EDDMapS.org)

**Figure 1.3: Bottom at-water sign for Langdale Park Boat Ramp on Withlacoochee and Little River Water Trail.** Each location will have a different bottom sign. See [At-Water Signs](#) and [WLRWT](#).



# Langdale Park Boat Ramp

Lowndes County, Georgia

## Withlacoochee River, east bank

3781 N. Valdosta Rd., Valdosta, GA 31602

**30.88747, -83.32395**



wwals.net



gawatertrails.org

EMA: Lowndes County 229-671-2790; Brooks Co. 229-263-4262

Except for the highways, a railroad, and downstream trash heaps on logjams, mostly you wouldn't know you're paddling next to the most populous city in the Suwannee River Basin, starting at this Valdosta-Lowndes County Parks & Rec. (VLPRA) Park. If Park is closed, use US 41 Landing. Join us for frequent cleanups at Sugar Creek and Troupville Boat Ramp. Earliest, expect yellow jessamine, then wild native azaleas (*Rhododendron canescens*). In spring, see red maple and white Grancy Greybeard and dogwood. Year-round, see loblolly pines, live oaks, water oaks, cypress, river birch, willow, and Spanish moss.

**Water Levels, Valdosta (US 41) USGS Gauge 02317755:**  
**113.8' (3.5') lowest boatable; 123' (12.7') highest safe**

**Downstream: Left and right bank (l or r): facing downstream**

- 0.51 miles, 30.881988, -83.325054, **Hairpin Turn Deadfall**
- 0.65 miles, 30.880947, -83.326223, **Tire Pile**
- 1.17 miles, 30.875734, -83.323024, **Three Mile Branch, l**, drains Five Points
- 2.04 miles, 30.868327, -83.320487, **What is this 03110203004620, l**
- 2.64 miles, 30.864144, -83.320596, **Sugar Creek, l**, drains much of Valdosta, notorious for sewage spills, deadfall, trash
- 2.73 miles, 30.863296, -83.321576, **Norfolk Southern RR Bridge**
- 2.77 miles, 30.862972, -83.321996, **Railroad track deadfall**
- 3.15 miles, 30.860605, -83.323848, **Sugar Creek Landing**, left bank, 2410 Gornito Rd., Valdosta, GA 31602, difficult to find, long takeout through cypress knees
- 4.24 miles, 30.853877, -83.332607, **Sheri Branch 03110203000485, l**
- 4.40 miles, 30.854919, -83.334328, **I-75 Bridge**, near exit 18.
- 5.14 miles, 30.850019, -83.339628, **GA 133 Withlacoochee Bridge**, West of Valdosta off I-75 exit 18, notorious for high *E. coli*.
- 5.15 miles, 30.84985, -83.3399, **GA 133 Power Line**
- 5.24 miles, 30.848977, -83.340493, **GA 133 Deadfall**
- 5.43 miles, 30.846835, -83.342166, **Troupville Cutoff, l**
- 5.61 miles, 30.846499, -83.343668, **Meander Deadfall**
- 5.69 miles, 30.846504, -83.342311, **Troupville Cutoff end, l**
- 5.75 miles, 30.845776, -83.3424, **Loch-Winn Run 03110203004651, l**
- 6.34 mi., 30.847172, -83.347652, **Little River Confluence, r**
- 6.78 miles, **Troupville Boat Ramp**, left bank of Little River, 19664 Valdosta Hwy, Valdosta, GA 31602, on GA 133 off I-75 exit 18, Lowndes County, in VLPRA park.

**Upstream: has some interesting sites within a few miles**

- 0.05 miles, 30.887978, -83.324256, **Corinne Coleman Creek 03110203000782, r**
- 0.53 miles, 30.89262, -83.3189, **US 41 Bridge**
- 0.54 miles, 30.89285, -83.3188, **US 41 Landing**
- 1.03 miles, 30.895699, -83.31483, **Stillhouse Branch, l**
- 1.54 miles, 30.902192, -83.312247, **Cherry Creek Sink, l**
- 1.65 miles, 30.901774, -83.31094, **Cherry Creek, l**
- 1.85 mi., 30.9042, -83.31157, **Withlacoochee Slough at Cherry Creek, r**
- 3.00 miles, 30.91849, -83.309506, **Sermons Branch, r**
- 3.75 miles, 30.921932, -83.303605, **Bay Branch, r**

Photographs: Bobby McKenzie (center), Gretchen Quarterman (lower left), Bret Wagenhorst (flowers), John S. Quarterman (others).  
 Map background data © google; Maps by WWALS

- 5.01 miles, 30.9288, -83.292668, **Thomasville-Valdosta Power Line**
- 5.45 miles, 30.933004, -83.289189, **Fender Bridge site**
- 5.45 miles, 30.932989, -83.288971, **Staten Road Bridge**
- 5.48 miles, 30.932805, -83.288878, **Staten Road Landing, l**, 4556 Staten Road, steep road abutment; not recommended
- 7.24 miles, 30.946538, -83.272011, **Ziegler Creek 03110203000495, l**
- 7.44 miles, 30.949028, -83.271885, **Skipper Bridge**, no takeout
- 7.78 miles, 30.952758, -83.268467, **Reed Road Creek 03110203004488, l**
- 8.14 miles, 30.95705, -83.269801, **Old Skipper Bridge**
- 8.21 miles, 30.957999, -83.269871, **McTier Branch 03110203004438, r**
- 9.83 miles, 30.973678, -83.263525, **Cooper Carter Creek 03110203004407, r**
- 10.04 miles, 30.975406, -83.261484, **Cat Creek, l**
- 10.78 miles, 30.98182, -83.26493, **Tom's Branch 03110203000541, l**
- 10.78 miles, 30.981854, -83.264984, **Redeye Creek, l**
- 10.95 miles, 30.981369, -83.267676, **Tyler Bridge**
- 10.96 miles, 30.981249, -83.268027, **Franklinville Landing, r**, 6560 Franklinville Road, road entrance from the west.

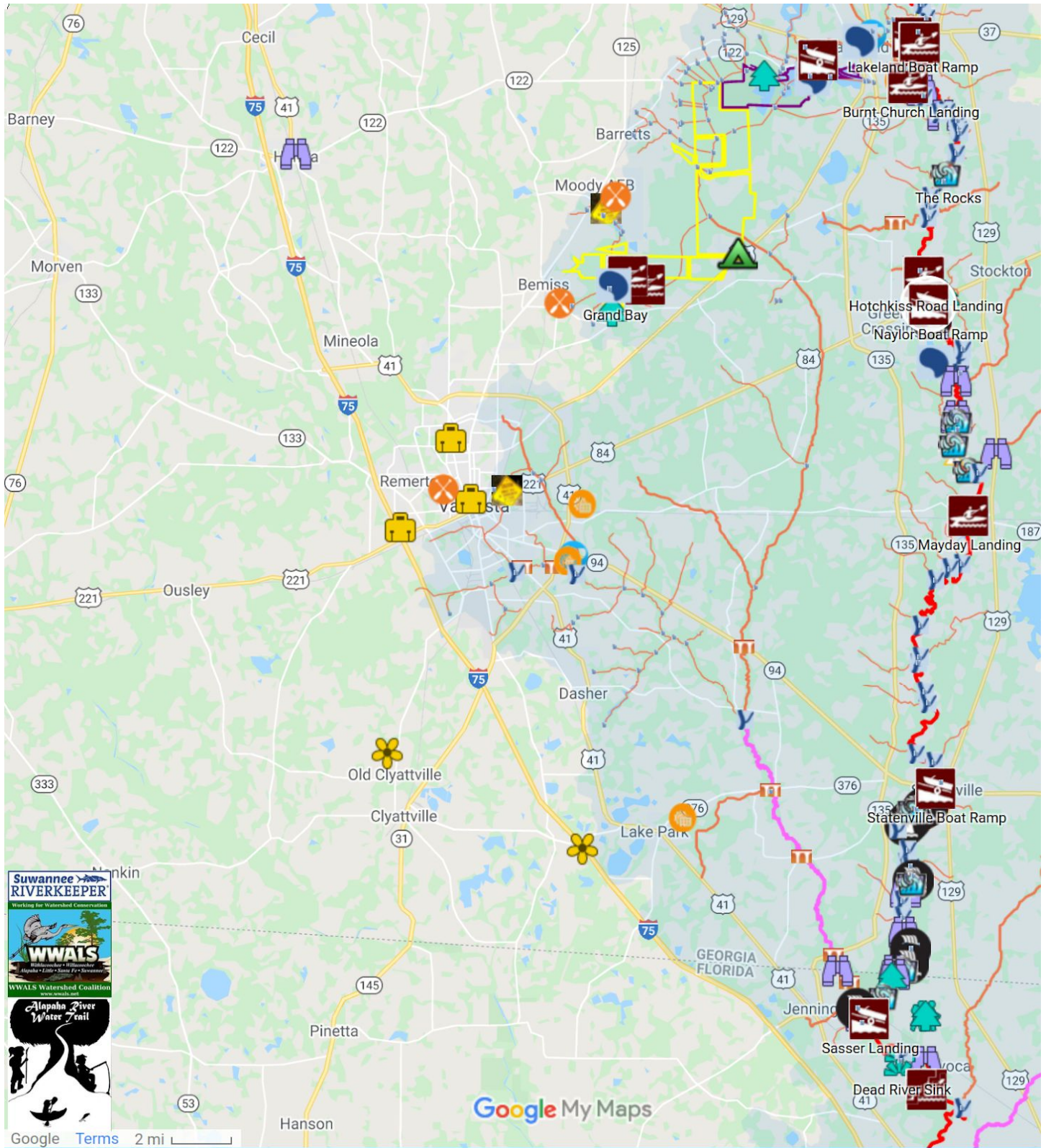




**Figure 2: Alapaha River Water Trail in Lowndes County.** See [ARWT](#).

Naylor Boat Ramp is highlighted: the only public access to the Alapaha River in Lowndes County.

<https://www.google.com/maps/d/u/0/viewer?mid=Ixo8NYUn9oGVnelSxq0W3WR99Iyw&ll=30.82475983541852%2C-83.23119507631178&z=11>



**Figure 2.1: Top at-water sign for Alapaha River Water Trail.** Each location will have these.  
See [At-Water Signs](#) and [ARWT](#).



# Alapaha River Water Trail

**Paddle wild and scenic Blackwater**  
**from south Georgia to north Florida**

Join a WWALS monthly paddle outing!

A dozen landings on 129 boatable river miles in two states:  
about 107 in Georgia and 22 in Florida.



[gawatertrails.org](http://gawatertrails.org)



[wwals.net](http://wwals.net)

The Alapaha's tea-colored tannin waters class it as a blackwater river, flowing below bald cypress, longleaf, slash, and loblolly pines, and majestic oaks, with great blue herons, snapping turtles, alligators, and fish. Mostly flat, the Alapaha River also contains rapids, many springs, and the Alapaha Sink and the Dead River Sink where it goes underground until it comes back up in the Alapaha Rise on the Suwannee River in Hamilton County, Florida. Covering its entire flood plain in the rainy season, and less than a foot deep in spots during dry spells, the Alapaha River is a treasure and a challenge. The Alapaha River Water Trail also includes the Alapahoochee River, as well as many lakes, ponds, and swamps that are boatable year round.

## Etiquette

1. Carry out all trash with you
2. Camp only where you know you have permission
3. Do not cut or damage living trees
4. Take only pictures or videos; leave no trace
5. Control pets or leave them at home
6. Respect wildlife
7. Respect waterfront property
  - Don't trespass on private property
  - Minimize impacts to shore
8. Be courteous to other water trail users



### Help Protect Your Watershed

Become certified to perform Water Quality Testing  
Report invasive species to [www.EDDMapS.org](http://www.EDDMapS.org)

## Checklist

- Water and food
- Sunscreen & bug repellent
- Whistle, map, spare paddle
- Personal flotation device
- First aid kit & tiedowns
- Rope for shoals
- Clothes:
  - Warm & swim suit
  - Dry & waterproof bag
  - Trash bag & trash picker
  - Flashlight in case of dark
  - Phone, battery, case, lanyard

Always file a **float plan** so emergency responders can locate you.

**WWALS Watershed Coalition, Inc. (WWALS)**, is an IRS 501(c)(3) nonprofit charity corporation.

WWALS advocates for conservation and stewardship of the Withlacoochee, Willacoochee, Alapaha, Little, Santa Fe, and Suwannee River watersheds in south Georgia and north Florida through education, awareness, environmental monitoring, and citizen activities.

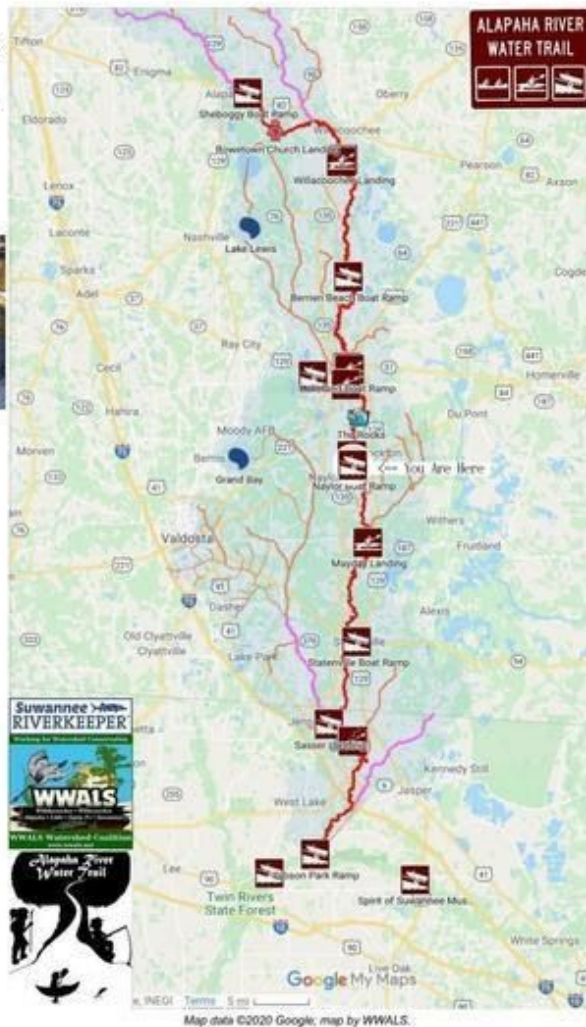
WWALS is the WATERKEEPER® Alliance member for the Suwannee River Basin as **Suwannee RIVERKEEPER®**.



## Sponsors of this Water Trail



VALDOSTA  
A CITY OF EXCELLENCE



## Safety

1. Be prepared with life vests and cell phone
2. Let someone know your float plan
3. Beware of alligators, snakes, and red wasps
4. Watch small children or pets
5. Be extremely careful with campfires

Figure 2.2: Bottom at-water sign for Naylor Boat Ramp on the Alapaha River Water Trail.

See [At-Water Signs](#) and [ARWT](#).



# Naylor Boat Ramp

Lowndes County, Georgia

Alapaha River

6955 US 84 E, Naylor, GA 31641

30.92507, -83.03867

Emergency Management: Lowndes County, GA 229-671-2790

Lanier County, GA: 229-482-2595; Echols County, GA: 229-559-8500; Hamilton County, FL: 386-792-6647



wwals.net



gawatertrails.org

## Downstream Water Levels:

Statenville USGS Gauge 02317500:

78.1' (2.0') lowest boatable before walking

82.1' (6.0') highest safe to not get lost

Right and left bank facing downstream.

- East bank, **Lola Tract VPA**
- Just below ramp, **Naylor Park Beach**
- Visible from beach, **US 84 Bridge**
- Just below US 84, **CSX RR Bridge**, historic *Atlantic & Coast Line RR*, caused Troupville to move to Valdosta
- Just below RR bridge, right bank, house sites on Lake Alapaha
- 1.4 miles, 30.918022, -83.036568, **River Run Waterfall** drops 3 to 8 feet at low water. Many rapids nearby, dangerous even for the experienced
- 3.8 miles, 30.9039230, -83.020189, left bank, **Foreman Creek** (03110202000597), comes down across US 84
- 4.1 miles, 30.8928264, -83.0215647, left bank, **Reedy Creek**, from beyond Stockton
- 4.7 miles, 30.8891300, -83.0231900, either bank, **Reedy Creek Sandbars**, string of sandbars; good lunch stop; beware brush with chiggers
- 5.8 miles, 30.8735600, -83.0229000, **Hairpin Willows**, lining the river
- 6.1 miles, 30.8728313, -83.0232544, **Hairpin Cutthrough**, just upstream from Ray Branch, water through neck of peninsula
- 6.15 miles, 30.871679, -83.023848, right bank, **Ray Branch**
- 7.05 miles, 30.8710346, -83.0227203, **River Bend Rapids**, scout before paddling
- 7.15 miles, 30.8602066, -83.0246277, **River Straight Rapids**, between branches of River Bend Rd, Stockton, Lanier Co.
- 8.25 miles, 30.8585421, -83.0237533, **Lee Bridge**, River Bend Rd, Stockton
- 8.85 miles, 30.8486577, -83.0169370, **Cow Shoals**, past end, s. branch of River Bend Rd.
- 9.65 miles, 30.847489, -83.011499, Left bank, **Cow Creek**. (Inset photos: John S. Quarterman, 2016-05-07)
- 9.95 miles, 30.8308411, -83.0183334, **Howells Rapids**, last before takeout
- 11.14 miles, 30.828749, -83.01864, site of **Howells Ferry & Bridge**
- 11.25 miles, **Howell Road Bridge**



Photo: John S. Quarterman for WWALS, Naylor Beach, US 84 Bridge, 2016-05-07



Map background ©2020 Google; Map by WWALS.

## Downstream Take Out:

11.25 miles, 5.5 hours: left bank, **Mayday Landing @ Howell Road**, 749 Howell Road, Stockton, GA 31649, Echols County, GA.



Photo: John S. Quarterman for WWALS, Howell Road Bridge and Mayday Landing, 2016-05-07

## Upstream Take Out:

1.24 miles upstream to **Hotchkiss Road Landing**, At end of Hotchkiss Road, in Lanier County, GA, off US 84. Another 12.5 miles to **Burnt Church Landing**, 217 Burnt Church Road (GA 135), Lakeland, GA 31635.

## Supporting This Boat Ramp:



Figure 3: All Landings, Lowndes County. See [WLRWT](#), [ARWT](#).

Naylor Boat Ramp is highlighted: the only public access to the Alapaha River in Lowndes County.

<https://www.google.com/maps/d/u/0/viewer?mid=1dnRr3ATEwReknyLzq26-316FfydbER2K&ll=30.88316323290958%2C-83.25915452619034&z=11>

