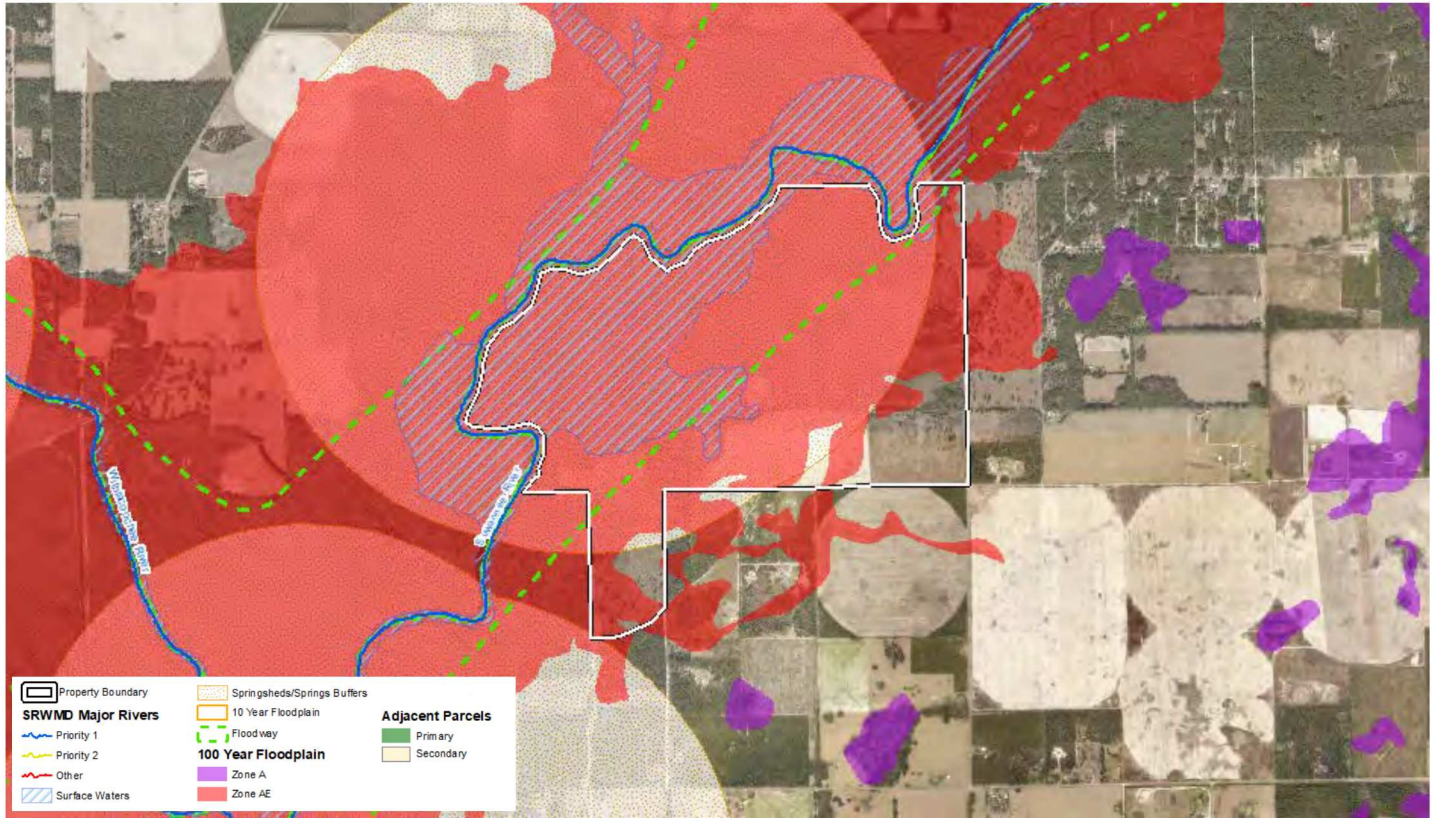




# SUWANNEE TRIAGE ANALYSIS RESULTS



Property Name: Harrell CE

Date: 01/14/2021

Acreage: ± 912 ac

County: Suwannee

Transaction Type: CE Amendment

Florida Forever: No

### Surface Water Protection

Major River: (Y) [Suwannee – Priority 1]

Riverine Surface Waters: (Y) [± 300 ac]

### Flood Protection

Floodway: (Y) [± 466 ac]

10 Year Floodplain: (Y) [± 524 ac]

100 Year Floodplain: (Y) [± 811 ac]

### Springs Protection

Springshed: (Y) [Springs Buffer] [± 725 ac]

Adjacency: (N)

### Miscellaneous

PFA: (Y) [Troy Peacock Lafayette Blue Falmouth]

WSPA: (Y) [Eastern]

BMAP: (Y) [Suwannee]