



**GEORGIA**  
DEPARTMENT OF NATURAL RESOURCES

**ENVIRONMENTAL PROTECTION DIVISION**

**Richard E. Dunn, Director**

---

**EPD Director's Office**

2 Martin Luther King, Jr. Drive  
Suite 1456, East Tower  
Atlanta, Georgia 30334  
404-656-4713

## **CATEGORICAL EXCLUSION DETERMINATION**

Suwannee River Headwaters Land and Water Protection  
The Conservation Fund  
(Ware and Clinch Counties)  
GEFA Loan No. LC-2021-002

The Georgia Environmental Protection Division (EPD) has conducted a review of the above project in accordance with the State's Environmental Review Process (SERP). EPD has determined that this project is eligible for a categorical exclusion. Accordingly, no further environmental review is planned.

The proposed project consists of the acquisition of approximately 8,845 acres along the southeastern side of the Suwannee River at the headwaters from the Okefenokee Swamp for habitat and water quality protection.

This project is eligible for a categorical exclusion because it meets the following specific eligibility criteria: habitat protection/restoration and surface water protection/restoration. Furthermore: the project will not create a new or relocate an existing discharge to surface or ground waters; the project will not substantially increase the volume of discharge or loading of pollutants; the project will not provide capacity to serve a population 30% greater than the existing population; the project will not have a significant effect on the quality of the human environment; the action will not directly or indirectly affect cultural resources, habitats of endangered or threatened species, or environmentally important natural resource areas; and the action is cost-effective and should cause no significant public controversy.

This determination becomes effective after thirty (30) days following its distribution by EPD. This exclusion may be revoked at any time if: 1) the project is altered and no longer meets the requirements of a categorical exclusion, 2) new evidence shows that serious environmental issues exist, or 3) a local, State or Federal law is being or may be violated.

The information which supports this decision is on file with the Georgia Environmental Protection Division and is available for public review upon request. A copy of the proposed project documentation is also available for review with The Conservation Fund.

All interested agencies, groups and persons supporting or disagreeing with this decision are invited to submit comments within thirty (30) days of the publish date of this notice via email to [kelli-ann.sottile@dnr.ga.gov](mailto:kelli-ann.sottile@dnr.ga.gov) or to the following address:

Georgia Environmental Protection Division  
Watershed Protection Branch  
Wastewater Regulatory Program  
ATTN: Kelli-Ann Sottile  
2 Martin Luther King Jr. Drive, Suite 1152 East  
Atlanta, Georgia 30334

After evaluating the comments received, EPD will make a final decision regarding approval of the project. No administrative action will be taken on the project for thirty (30) calendar days after publication of this Notice.



Publish Date: June 22, 2021

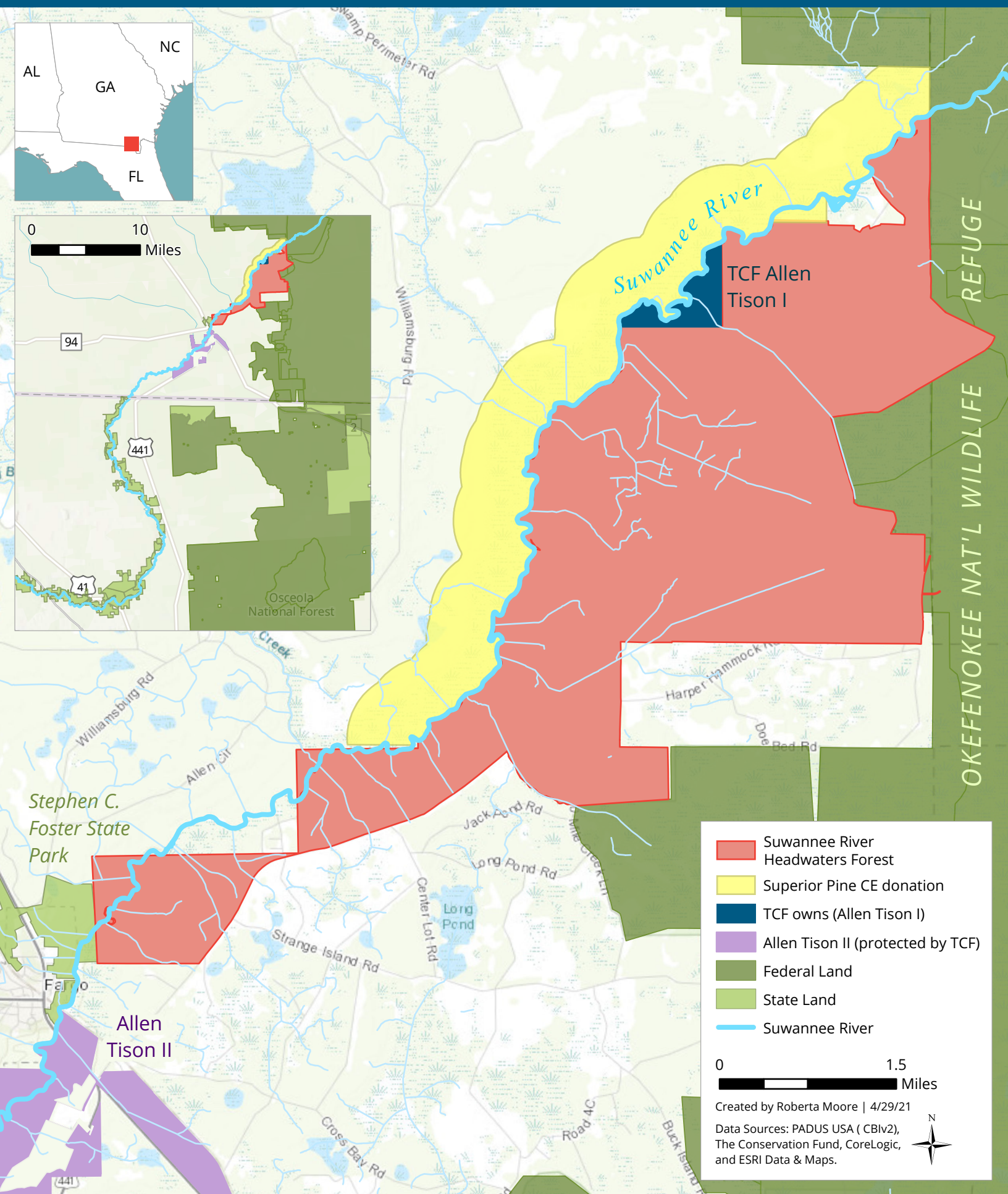
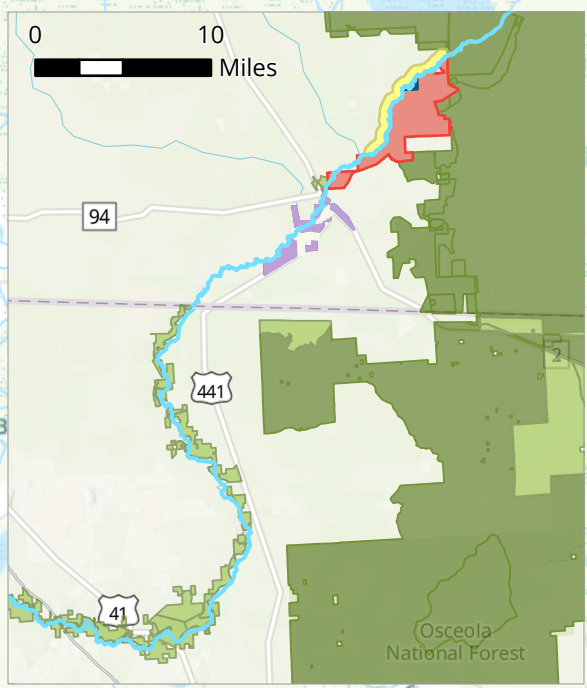
---

Richard E. Dunn, Director  
Environmental Protection Division

# Suwannee River Headwaters Forest

Clinch and Ware Counties, GA

THE CONSERVATION FUND



OKEFENOKEE NAT'L WILDLIFE REFUGE

- Suwannee River Headwaters Forest
- Superior Pine CE donation
- TCF owns (Allen Tison I)
- Allen Tison II (protected by TCF)
- Federal Land
- State Land
- Suwannee River

0 1.5 Miles

Created by Roberta Moore | 4/29/21  
 Data Sources: PADUS USA ( CBlv2),  
 The Conservation Fund, CoreLogic,  
 and ESRI Data & Maps.

