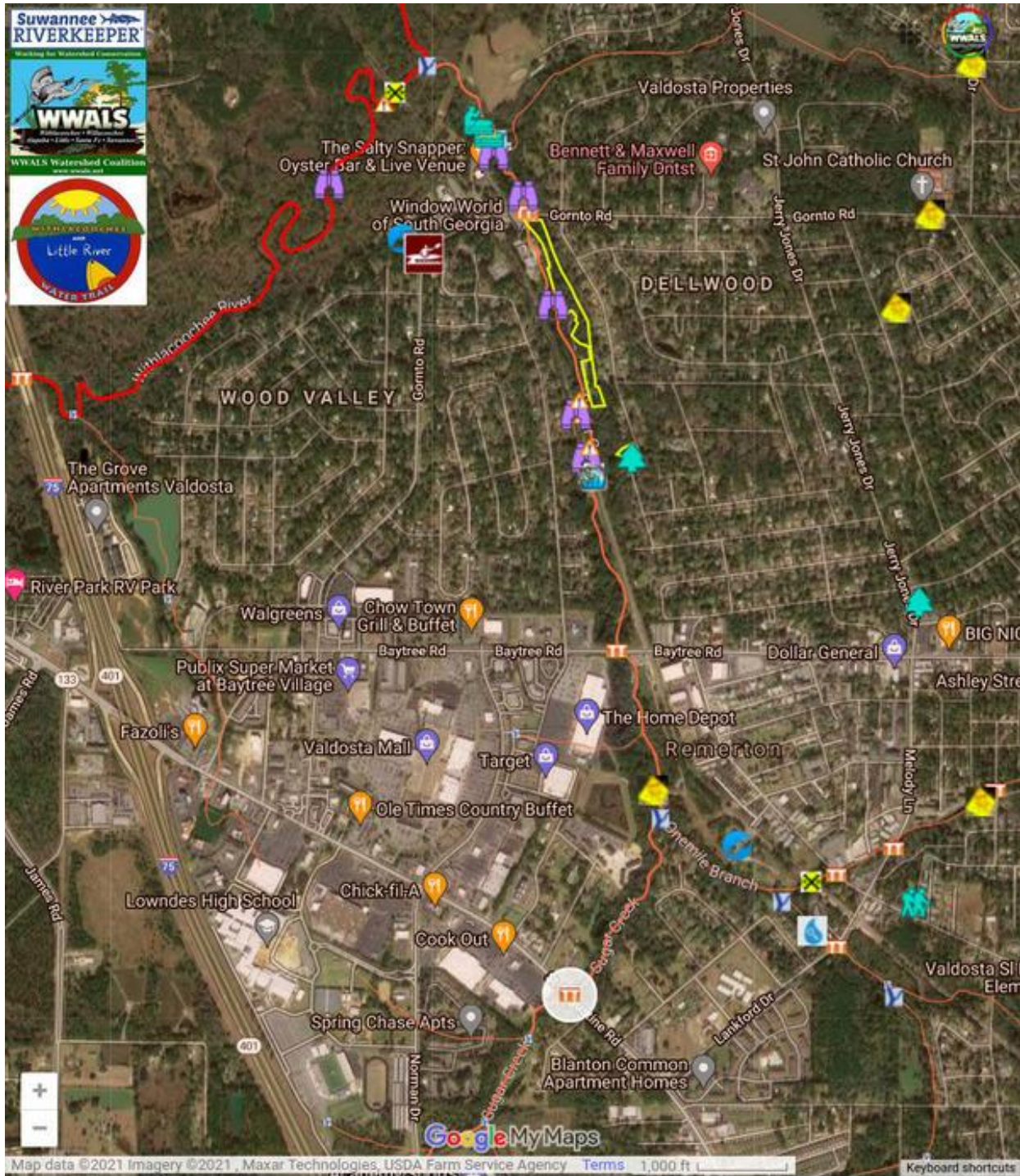


stores bound together by association or lease, such as malls, shopping centers or the downtown shopping area may consider the requirement for the number and placement thereof in the total picture rather than on an individual basis.” You can see that here we reintroduce the Utilities Director as mentioned previously under stormwater management violation enforcement.



*Sugar Creek, in WWALS [map of the Withlacoochee and Little River Water Trail](#).*