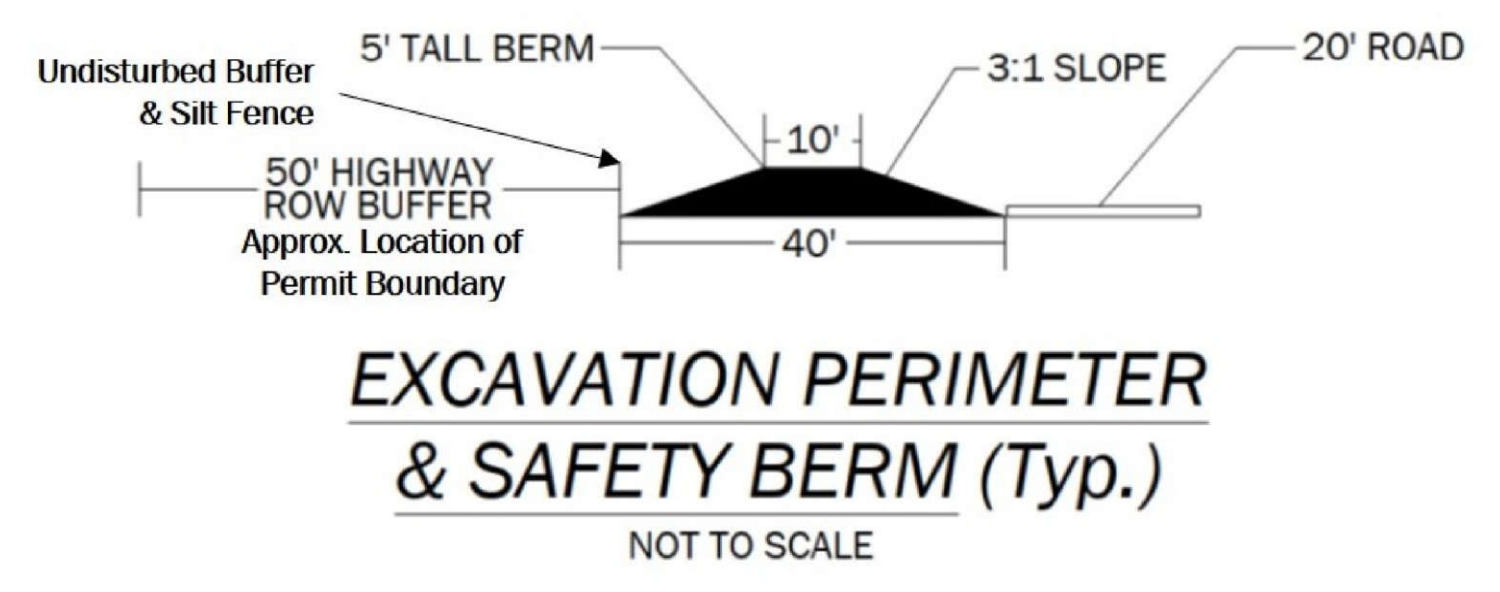
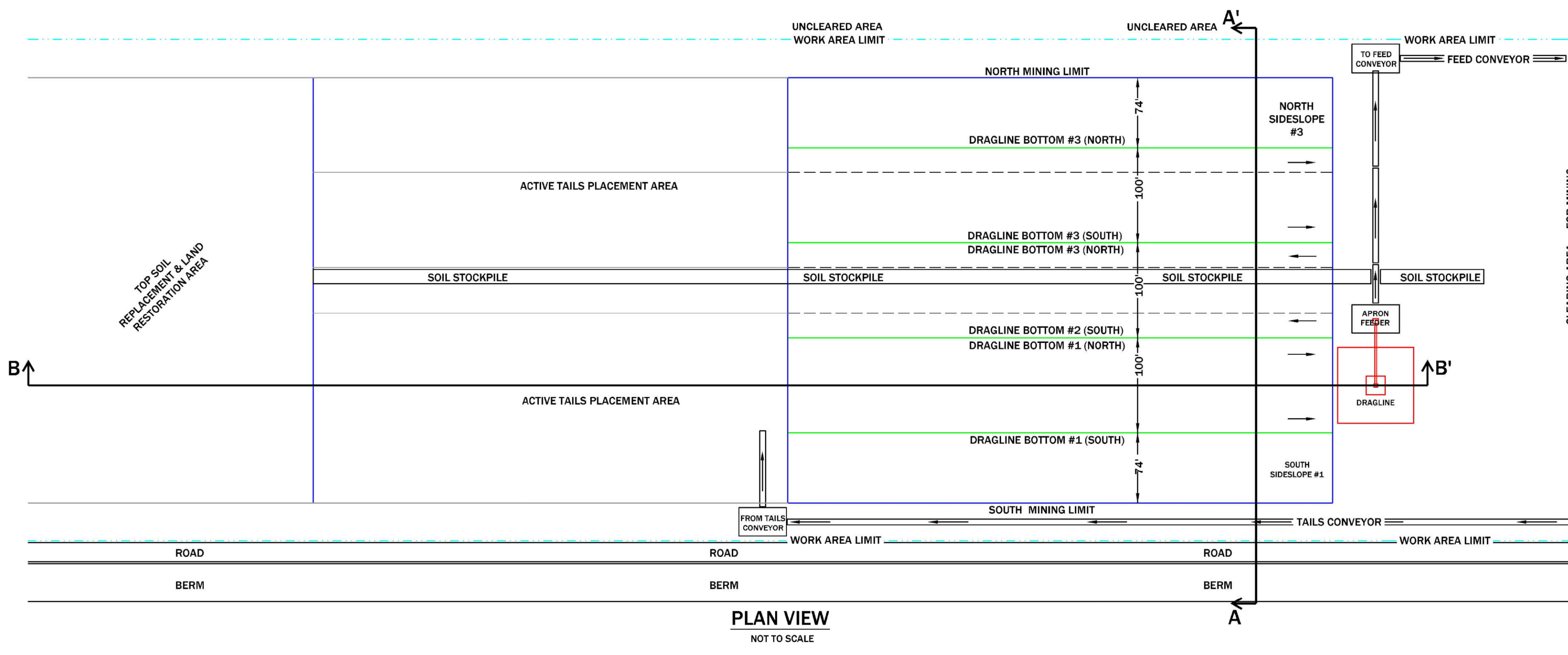


NOTES:

- All material will be hauled, utilizing trucks, between the permitted mine wet processing areas, and Mineral Separation Plant south of Highway 94.
- Process water will be piped to the Mineral Separation Plant from the southernmost well (FPW-01). Any wastewater from the Mineral Separation Plant will be hauled, by tanked trucks, to the Wet Concentration Plant for re-use.

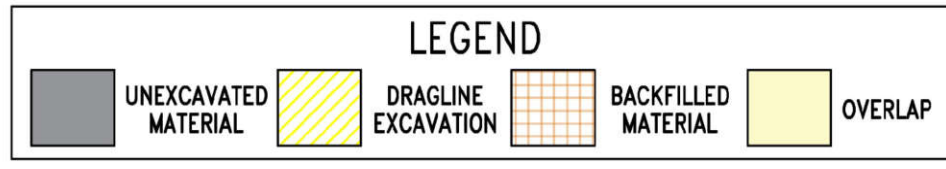
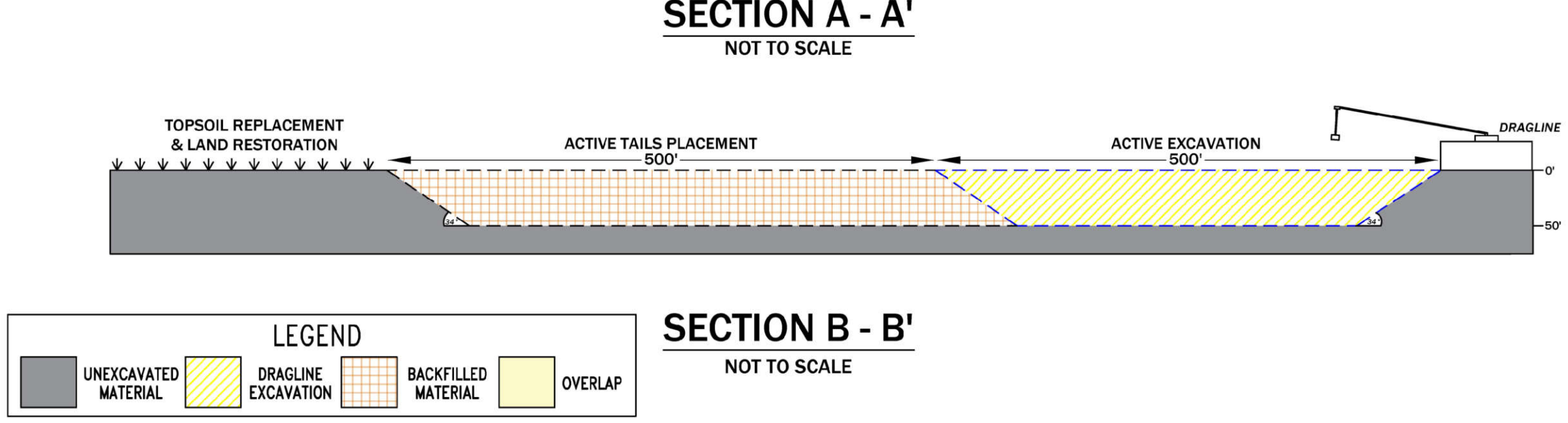
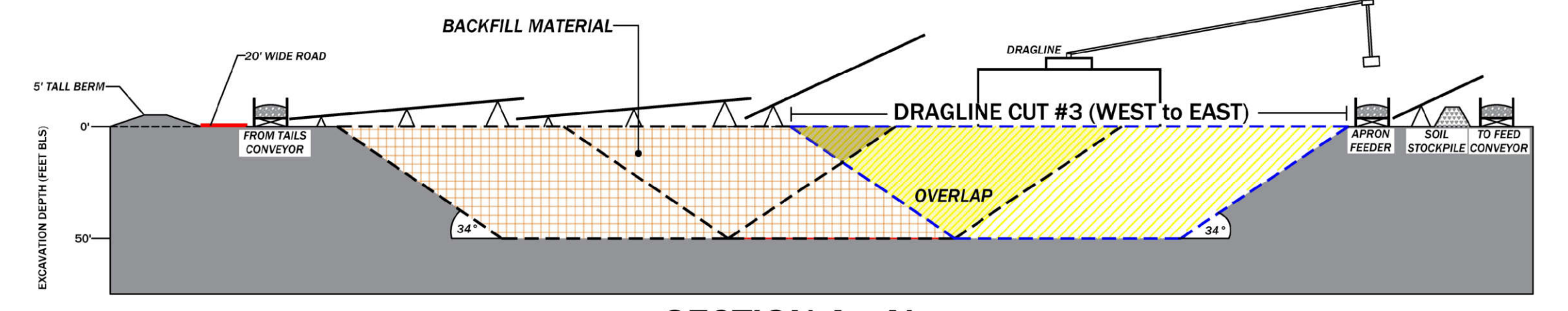
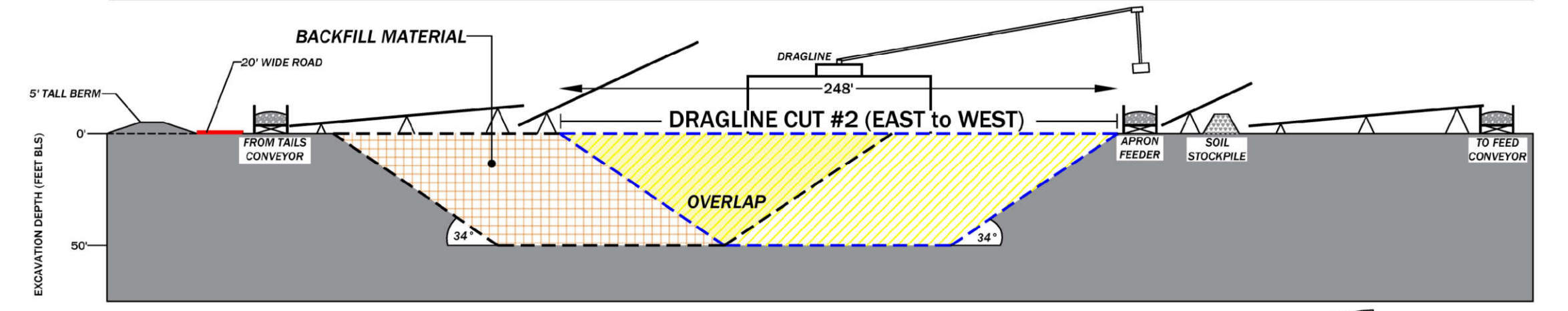
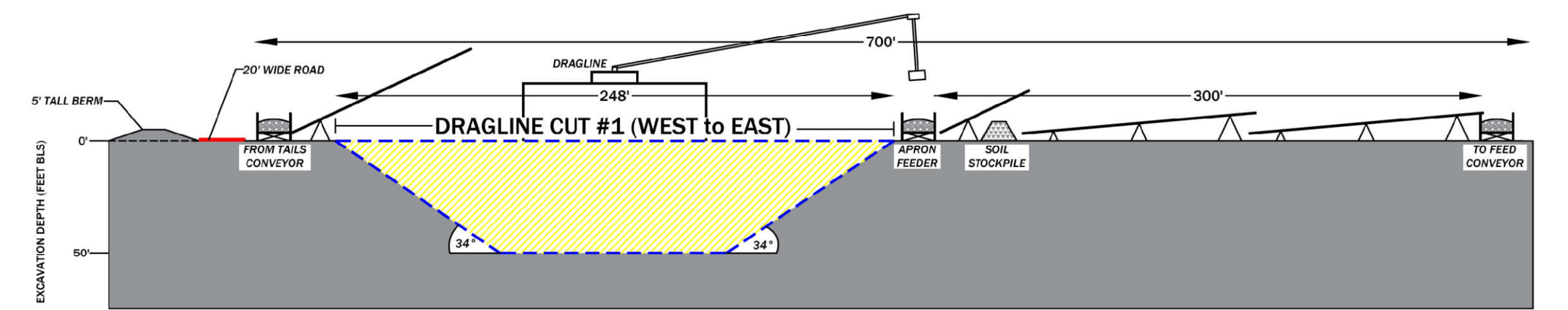
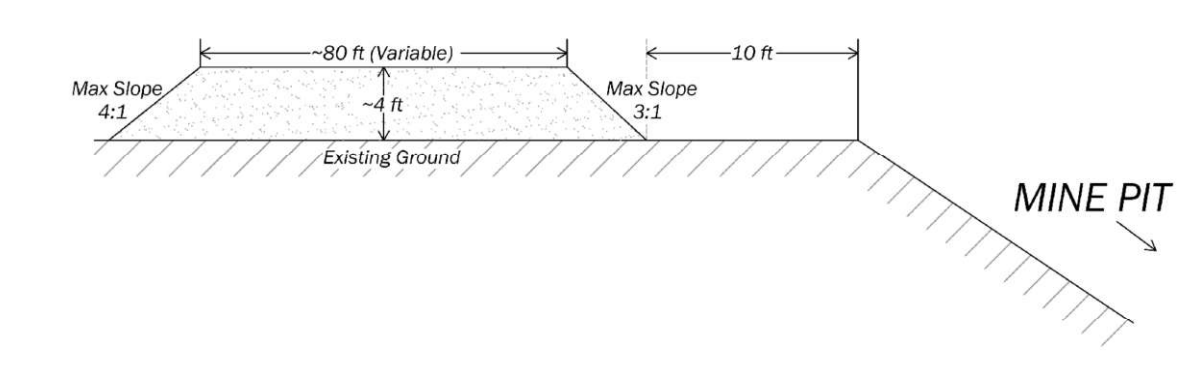
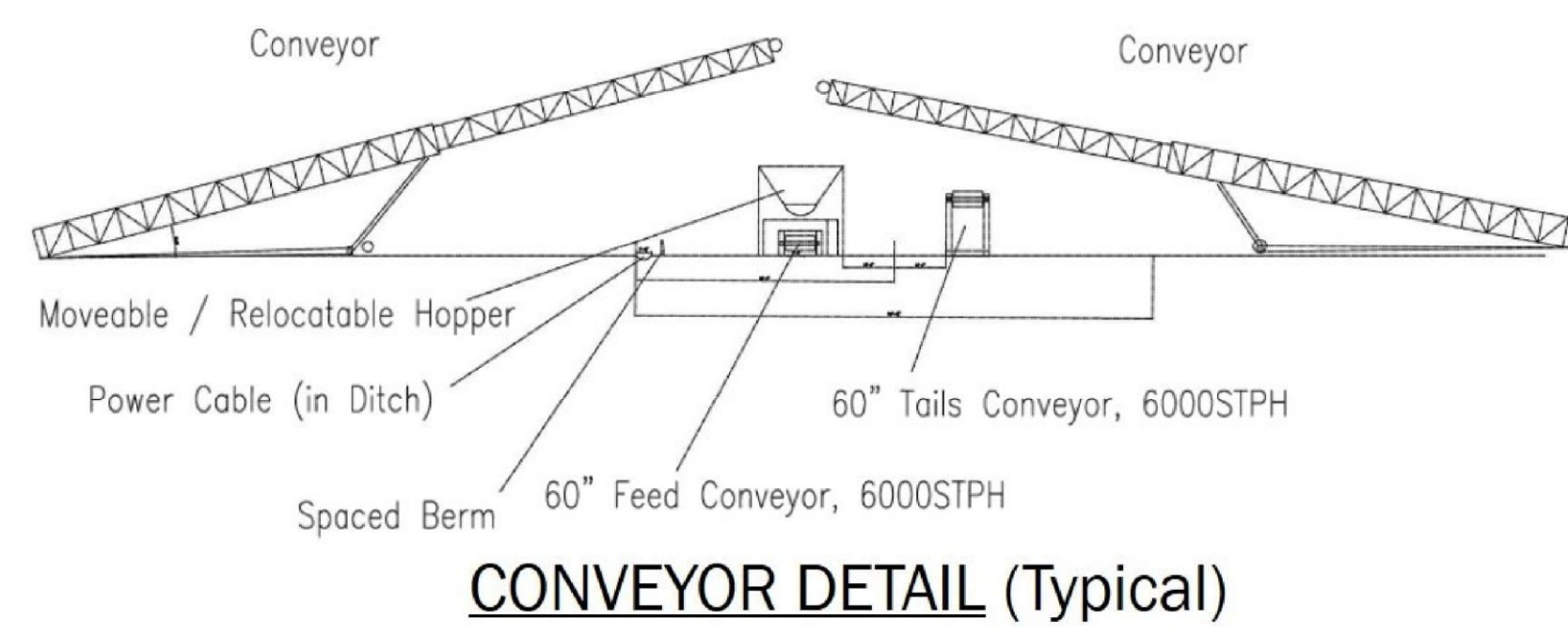
MINING PROCESS FLOW DIAGRAM



NOTES

- Dragline advancement will be 100 to 200 feet per day; backfilling shall proceed no more than 500 feet (i.e. 5 to 7 days) behind the progressing mine pit.
- See Sheet 17 for a more in-depth narrative regarding the mining process.

	Max Allowable
Mine Pit Sidewall Slope	34°
Mine Pit Depth	50 ft
Topsoil Stockpile Slope (Mine Pit Side)	3:1
Topsoil Stockpile Slope (Upgradient Side)	4:1
Topsoil Stockpile Height	Variable



SHEET 5: MINING PLAN SHEET - PROCESS FLOW DIAGRAM, DETAILS & TYPICAL PROFILE/CROSS-SECTION
TWIN PINES MINERALS, LLC SAUNDERS DEMONSTRATION MINE (ID NO. 2073)
ST. GEORGE, CHARLTON COUNTY, GEORGIA

DRAWN BY: DEK
CHECKED BY: SGR
DRAWING DATE: 11/13/2020
REVISION DATE: 11/19/2021
TTL JOB NO.: 000180200804.00
APPROX. SCALE: N.T.S.