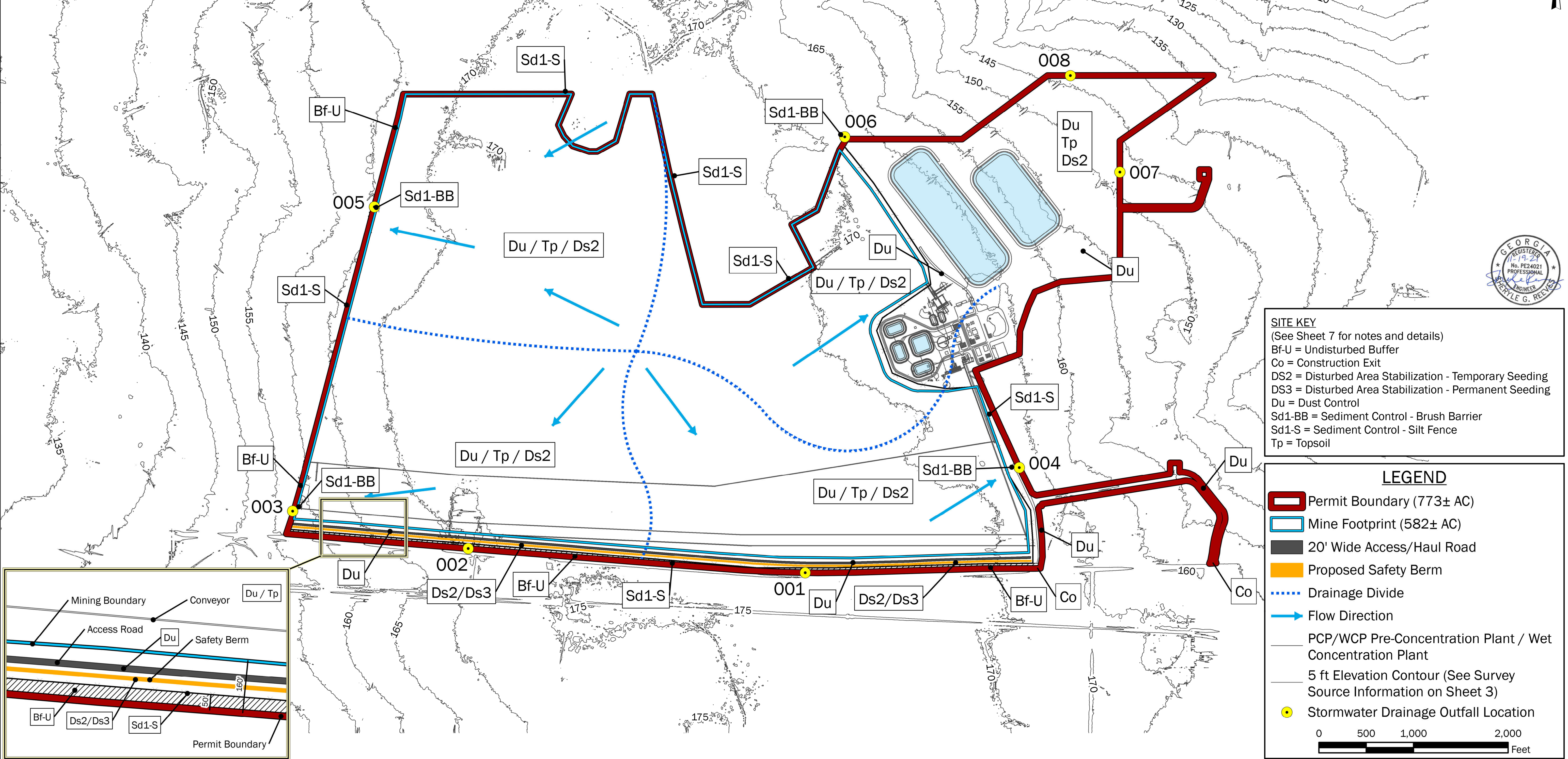


STORMWATER DRAINAGE OUTFALLS					
ID	LATITUDE	LONGITUDE	ID	LATITUDE	LONGITUDE
001	30.517381	-82.110128	005	30.528021	-82.124600
002	30.518087	-82.121451	006	30.530052	-82.108792
003	30.519178	-82.127356	007	30.529024	-82.099545
004	30.520431	-82.102924	008	30.531834	-82.101202

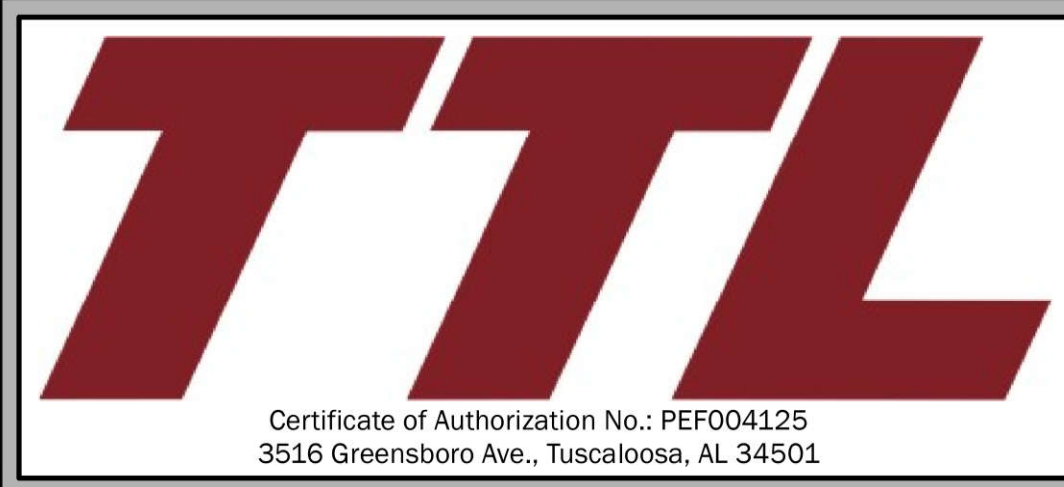
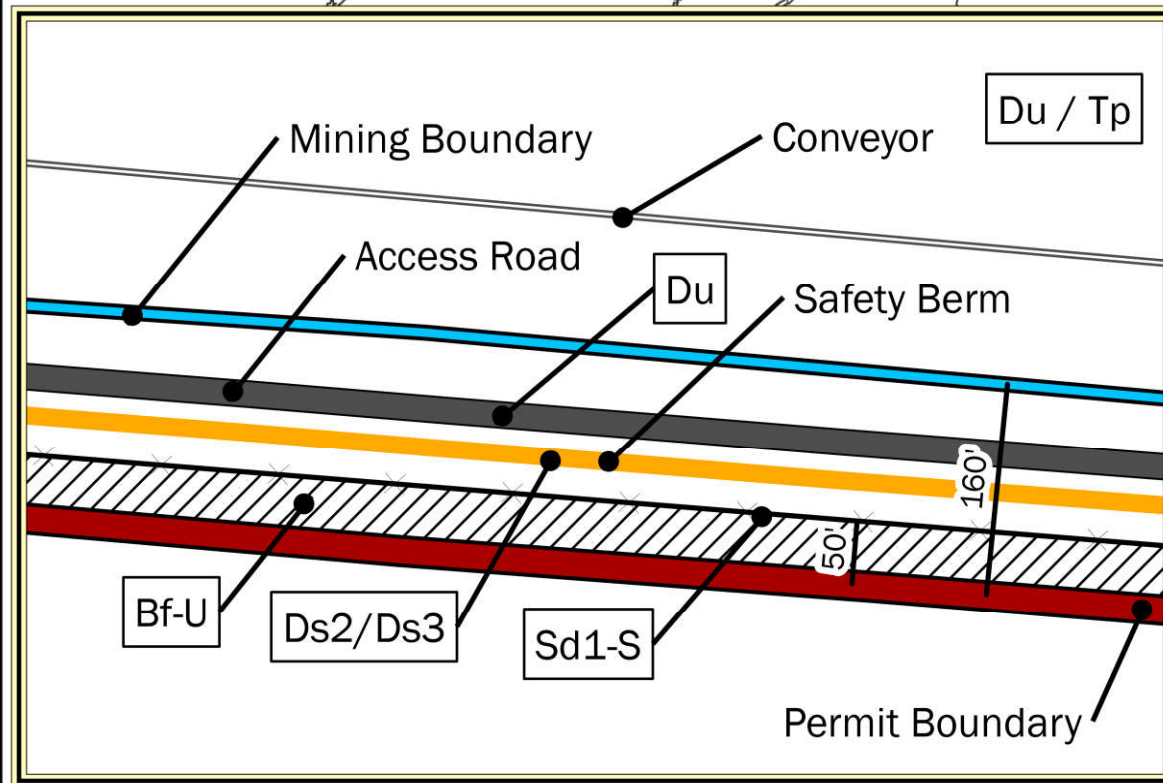


SITE KEY
 (See Sheet 7 for notes and details)
 Bf-U = Undisturbed Buffer
 Co = Construction Exit
 DS2 = Disturbed Area Stabilization - Temporary Seeding
 DS3 = Disturbed Area Stabilization - Permanent Seeding
 Du = Dust Control
 Sd1-BB = Sediment Control - Brush Barrier
 Sd1-S = Sediment Control - Silt Fence
 Tp = Topsoil

LEGEND

- Permit Boundary (773± AC)
- Mine Footprint (582± AC)
- 20' Wide Access/Haul Road
- Proposed Safety Berm
- Drainage Divide
- Flow Direction
- PCP/WCP Pre-Concentration Plant / Wet Concentration Plant
- 5 ft Elevation Contour (See Survey Source Information on Sheet 3)
- Stormwater Drainage Outfall Location

0 500 1,000 2,000
Feet



SHEET 8: EROSION & SEDIMENT CONTROL PLAN
 TWIN PINES MINERALS, LLC SAUNDERS DEMONSTRATION MINE (ID NO. 2073)
 ST. GEORGE, CHARLTON COUNTY, GEORGIA

DRAWN BY: DEK
CHECKED BY: SGR
DRAWING DATE: 11/13/2020
REVISION DATE: 11/19/2021
TTL JOB NO.: 000180200804.00
APPROX. SCALE: 1 in = 500 ft