

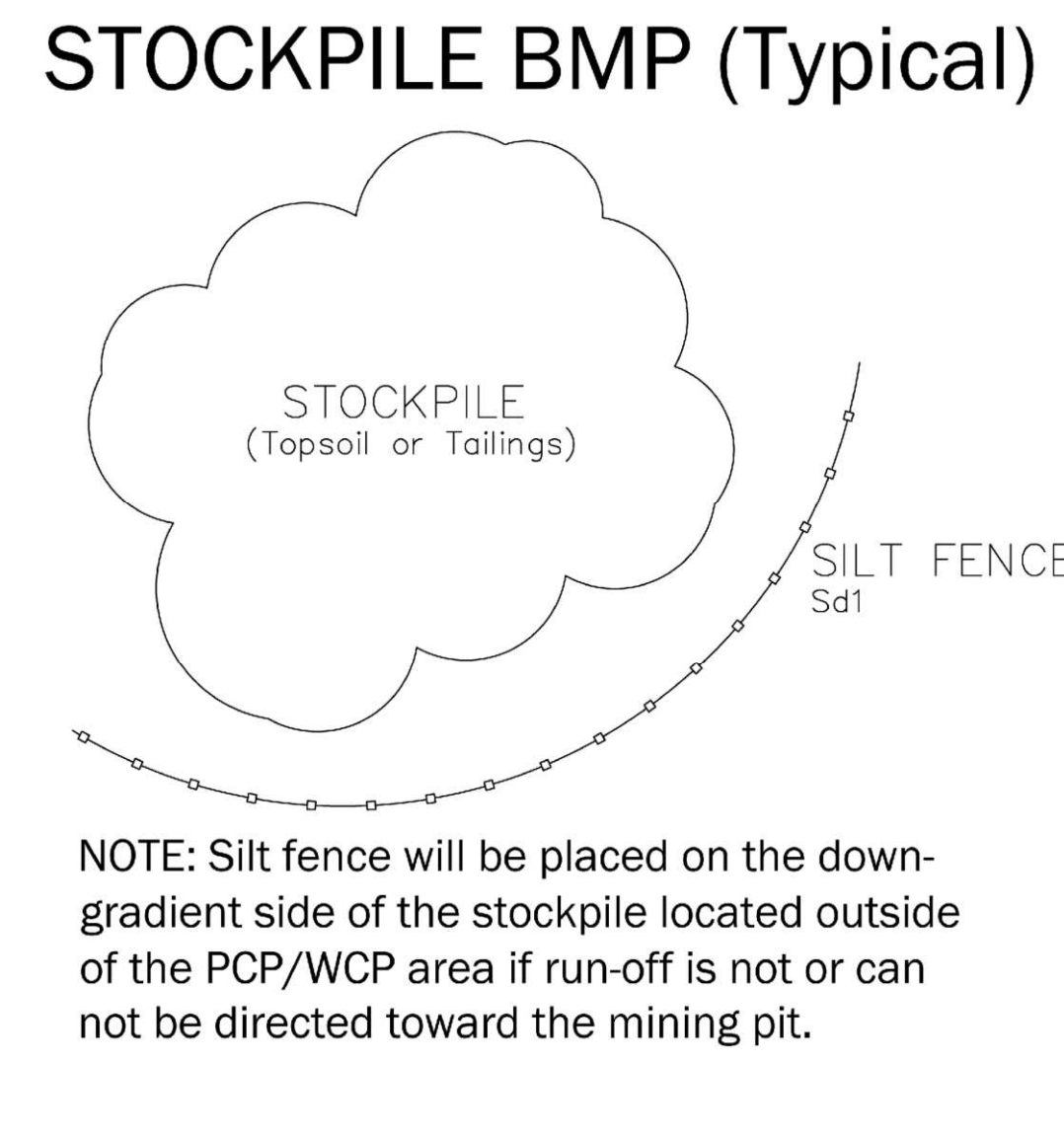
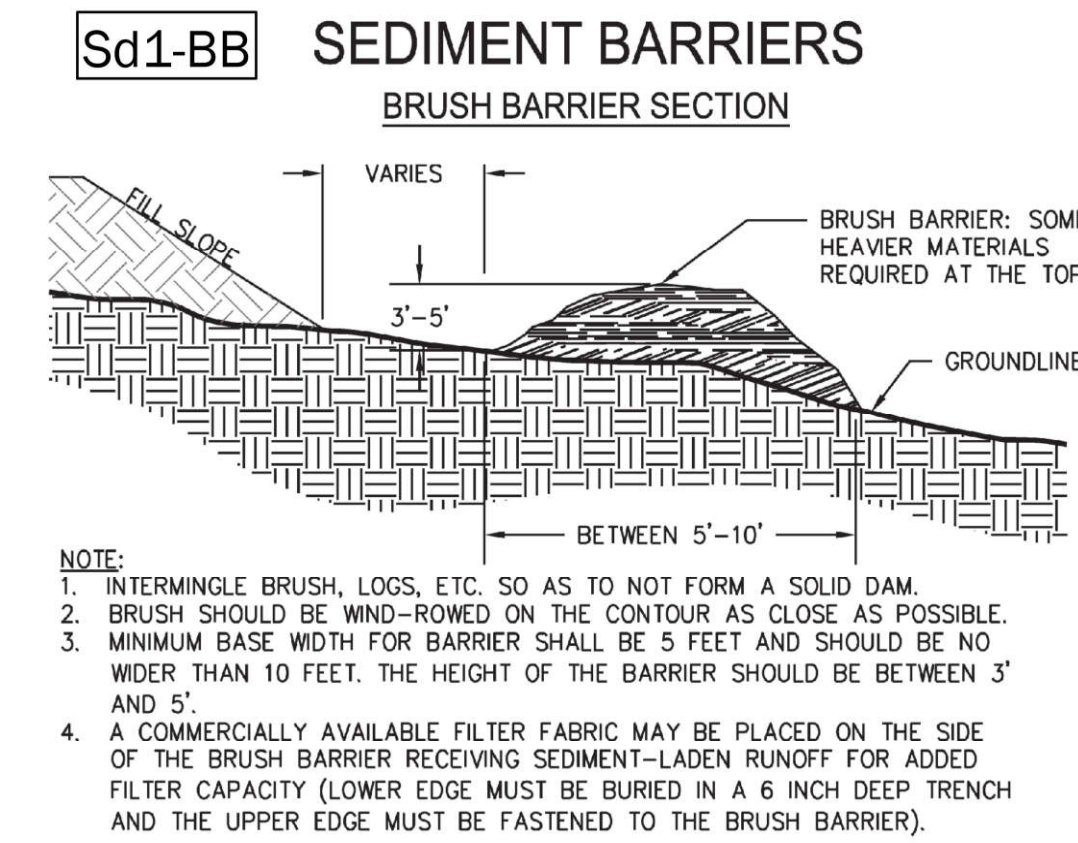
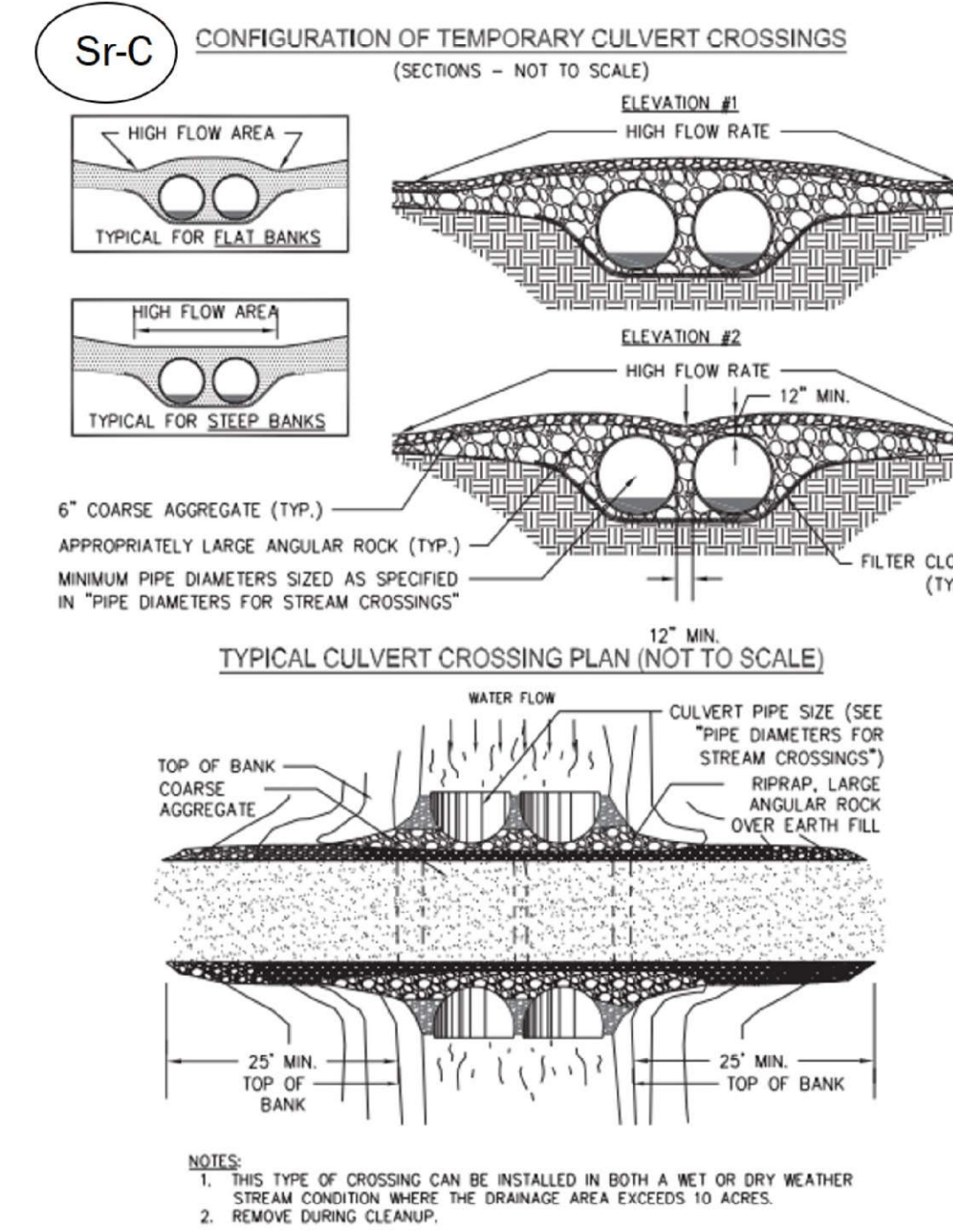
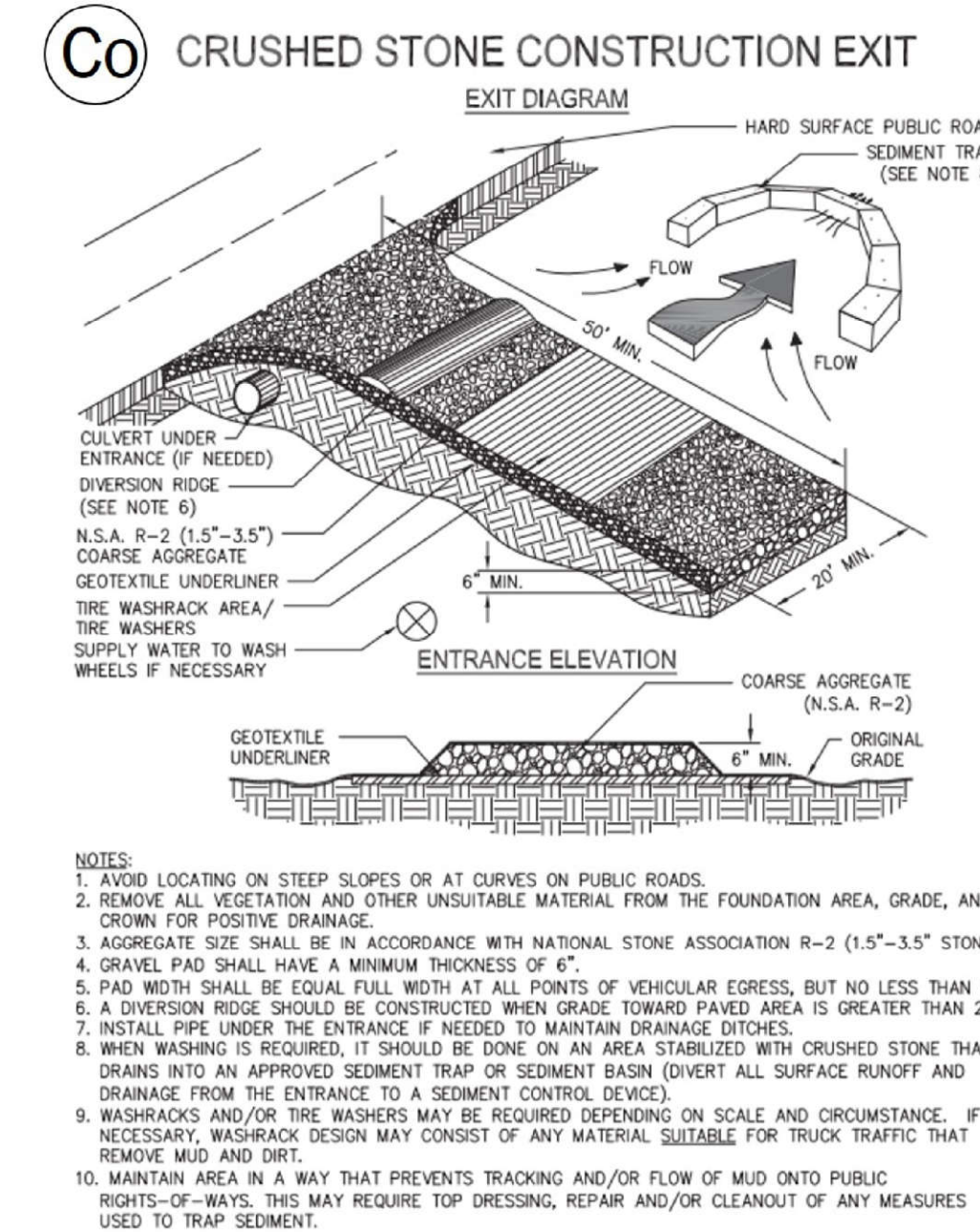
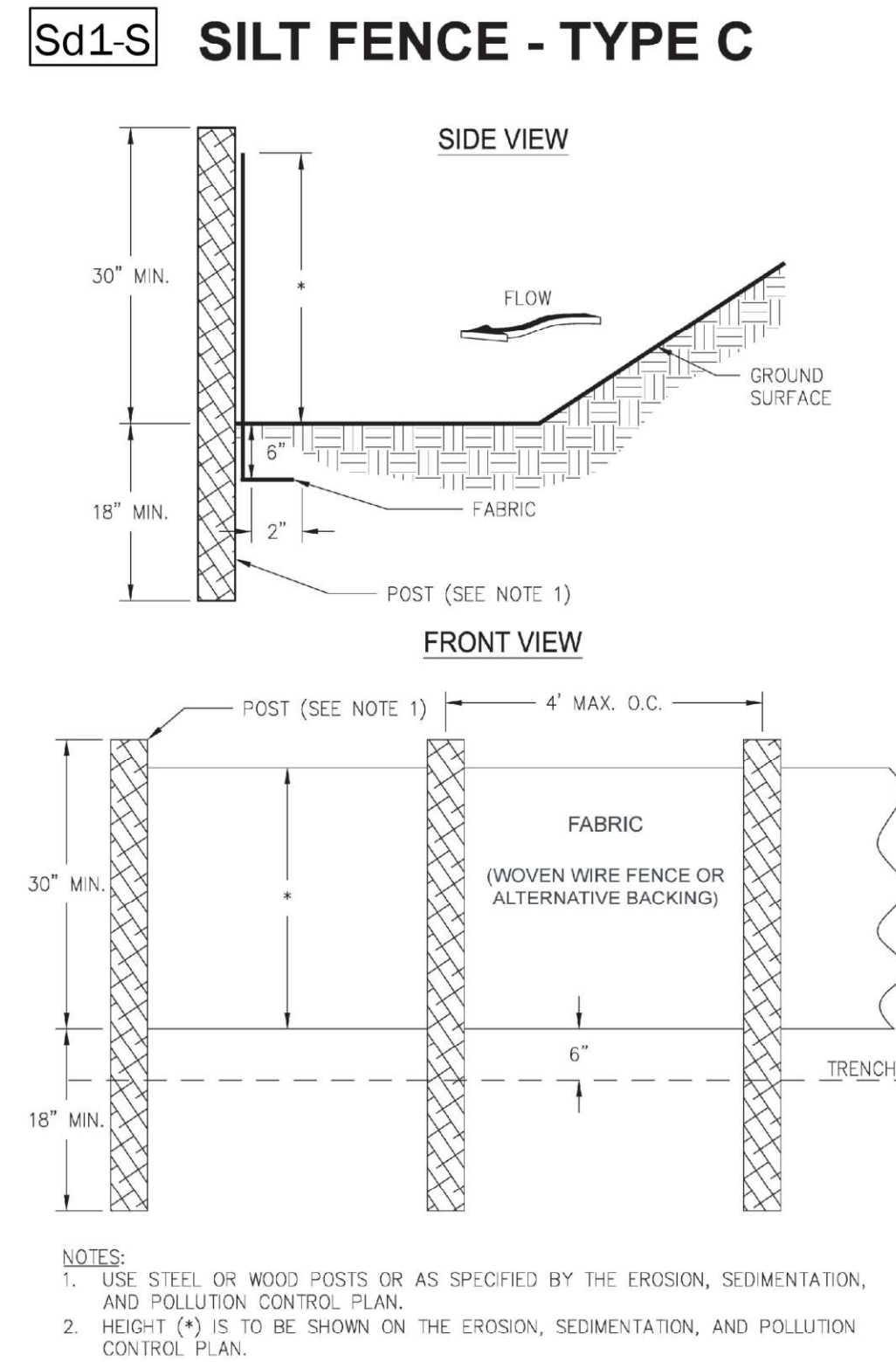
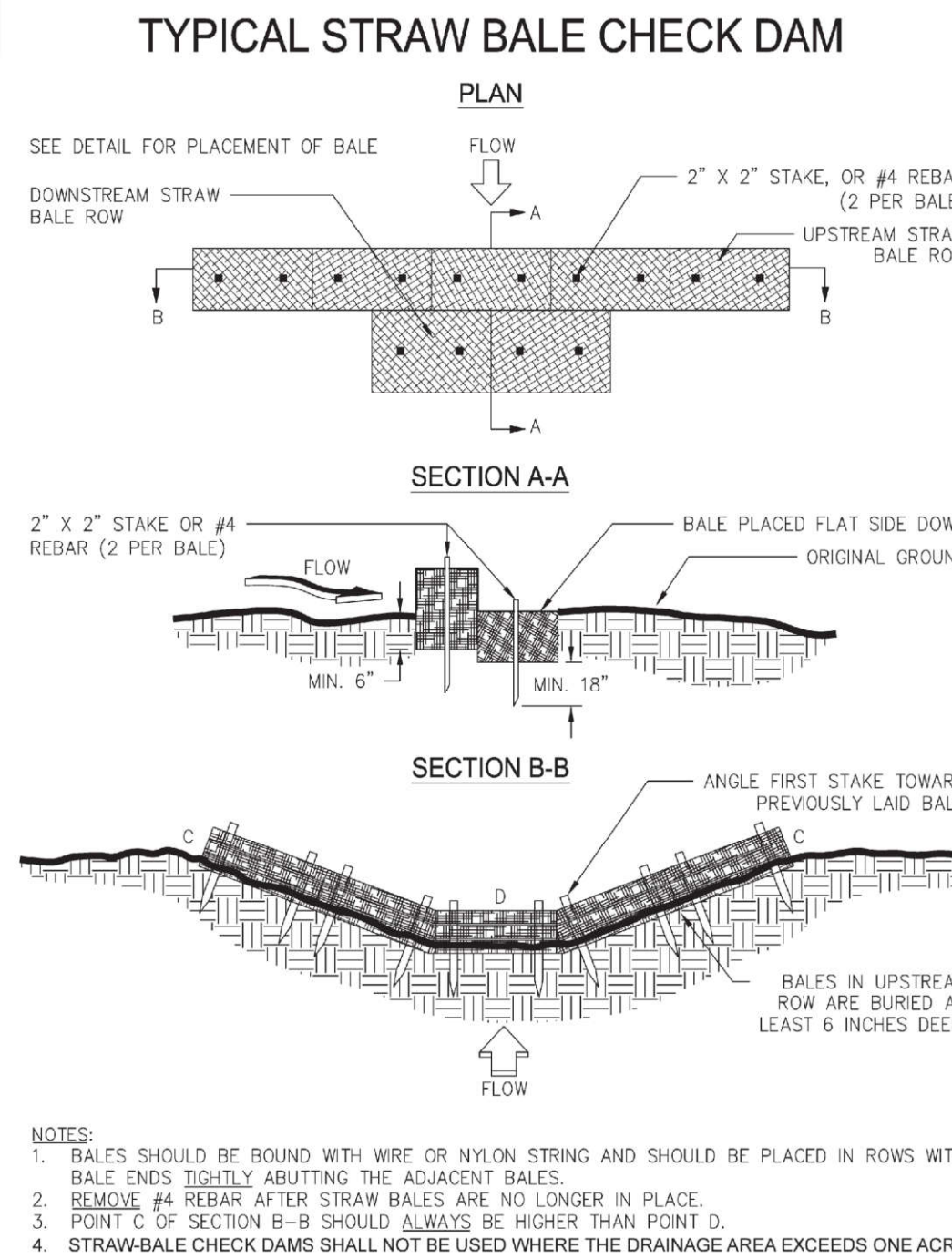
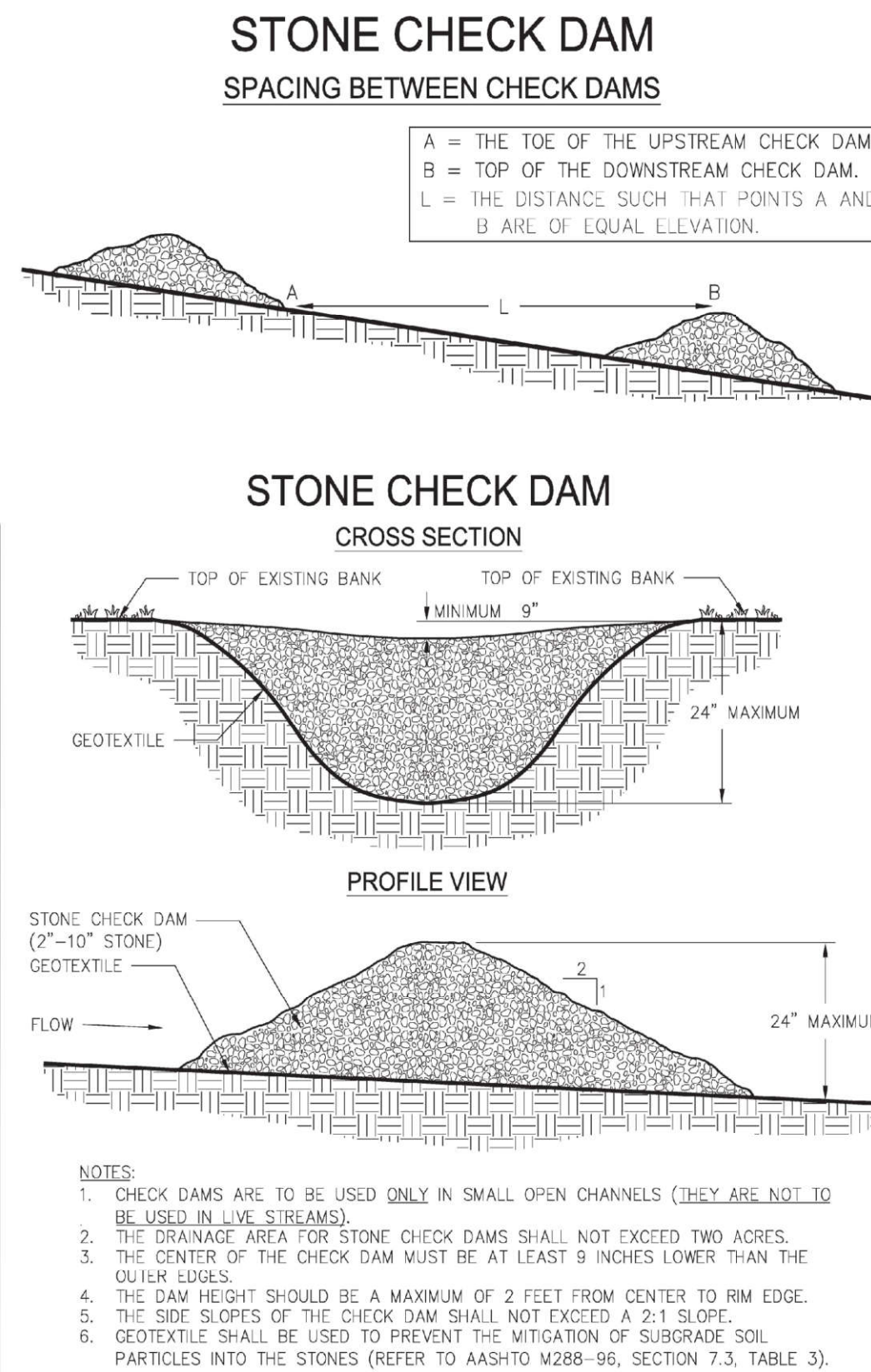
GEORGIA UNIFORM CODING SYSTEM

FOR SOIL EROSION AND SEDIMENT CONTROL PRACTICES GEORGIA SOIL AND WATER CONSERVATION COMMISSION STRUCTURAL PRACTICES

CODE	PRACTICE	DETAIL	MAP SYMBOL	DESCRIPTION
Cd	CHECKDAM			A small temporary barrier or dam constructed across a swale, drainage ditch or area of concentrated flow.
Ch	CHANNEL STABILIZATION			Improving, constructing or stabilizing an open channel, existing stream, or ditch.
Co	CONSTRUCTION EXIT			A crushed stone pad located at the construction site exit to provide a place for removing mud from tires thereby protecting public streets.
Sd1	SEDIMENT BARRIER			A barrier to prevent sediment from leaving the construction site. It may be sandbags, bales of straw or hay, brush, logs and poles, gravel, or a silt fence.
Sd3	TEMPORARY SEDIMENT BASIN			A basin created by excavation or a dam across a waterway. The surface water runoff is temporarily stored allowing the bulk of the sediment to drop out.
Sk	FLOATING SURFACE SKIMMER			A buoyant device that releases/drains water from the surface of sediment ponds, traps, or basins at a controlled rate of flow.
St	STORMDRAIN OUTLET PROTECTION			A paved or short section of riprap channel at the outlet of a storm drain system preventing erosion from the concentrated runoff.

VEGETATIVE PRACTICES

CODE	PRACTICE	DETAIL	MAP SYMBOL	DESCRIPTION
Ds1	DISTURBED AREA STABILIZATION (WITH MULCHING ONLY)			Establishing temporary protection for disturbed areas where seedlings may not have a suitable growing season to produce an erosion retarding cover.
Ds2	DISTURBED AREA STABILIZATION (WITH TEMP SEEDING)			Establishing a temporary vegetative cover with fast growing seedlings on disturbed areas.
Ds3	DISTURBED AREA STABILIZATION (WITH PERM SEEDING)			Establishing a permanent vegetative cover such as trees, shrubs, vines, grasses, or legumes on disturbed areas.
Ds4	DISTURBED AREA STABILIZATION (SODDING)			A permanent vegetative cover using sods on highly erodible or critically eroded lands.
Du	DUST CONTROL ON DISTURBED AREAS			Controlling surface and air movement of dust on construction site, roadways and similar sites.



EROSION CONTROL NOTES

EROSION & SEDIMENT CONTROL MEASURES

1. BMPs WILL BE INSTALLED AS DEPICTED IN EROSION AND SEDIMENT CONTROL PLAN SHEET 6 PRIOR TO ANY OTHER CONSTRUCTION OR MINING ACTIVITY AND WILL BE MAINTAINED UNTIL PERMANENT GROUND COVER IS ESTABLISHED.

EROSION CONTROL NOTES:

- THE ESCAPE OF SEDIMENT FROM THE SITE WILL BE PREVENTED BY THE INSTALLATION OF EROSION CONTROL MEASURES AND PRACTICES PRIOR, OR CONCURRENT WITH LAND DISTURBING ACTIVITIES.
- EROSION CONTROL MEASURES WILL BE MAINTAINED AT ALL TIMES. IF FULL IMPLEMENTATION OF THE APPROVED PLAN DOES NOT PROVIDE FOR EFFECTIVE EROSION CONTROL, ADDITIONAL EROSION AND SEDIMENT CONTROL MEASURES WILL BE IMPLEMENTED TO CONTROL OR TREAT THE SEDIMENT SOURCE.
- ANY DISTURBED AREA LEFT EXPOSED FOR A PERIOD GREATER THAN 14 DAYS WILL BE STABILIZED WITH MULCH OR TEMPORARY SEEDING.
- ALL EROSION AND SEDIMENT CONTROL MEASURES WILL CONFORM WITH THE GUIDELINES OF THE "MANUAL FOR EROSION AND SEDIMENT CONTROL."
- DURING CONSTRUCTION AND MINING ACTIVITIES, TPM WILL MAINTAIN CAREFUL SCHEDULING AND PERFORMANCE TO ENSURE THAT LAND STRIPPED OF ITS NATURAL GROUND COVER IS EXPOSED ONLY IN SMALL QUANTITIES, AND PROTECTION IS ESTABLISHED.
- SEDIMENT AND EROSION CONTROL MEASURES MUST BE CHECKED AFTER EACH RAIN EVENT. EACH DEVICE IS TO BE MAINTAINED OR REPLACED IF SEDIMENT ACCUMULATION HAS REACHED HALF THE CAPACITY OF THE DEVICE. ADDITIONAL DEVICES MUST BE INSTALLED IF NEW CHANNELS HAVE DEVELOPED.
- DUST WILL BE CONTROLLED BY APPLYING WATER TO HAUL ROADS AND OTHER HIGH-TRAFFIC AREAS.
- TPM WILL INSPECT EROSION CONTROL MEASURES AT THE END OF EACH WORKING DAY TO ENSURE PROPER FUNCTIONING.

AUXILIARY EROSION & SEDIMENT CONTROL MEASURES

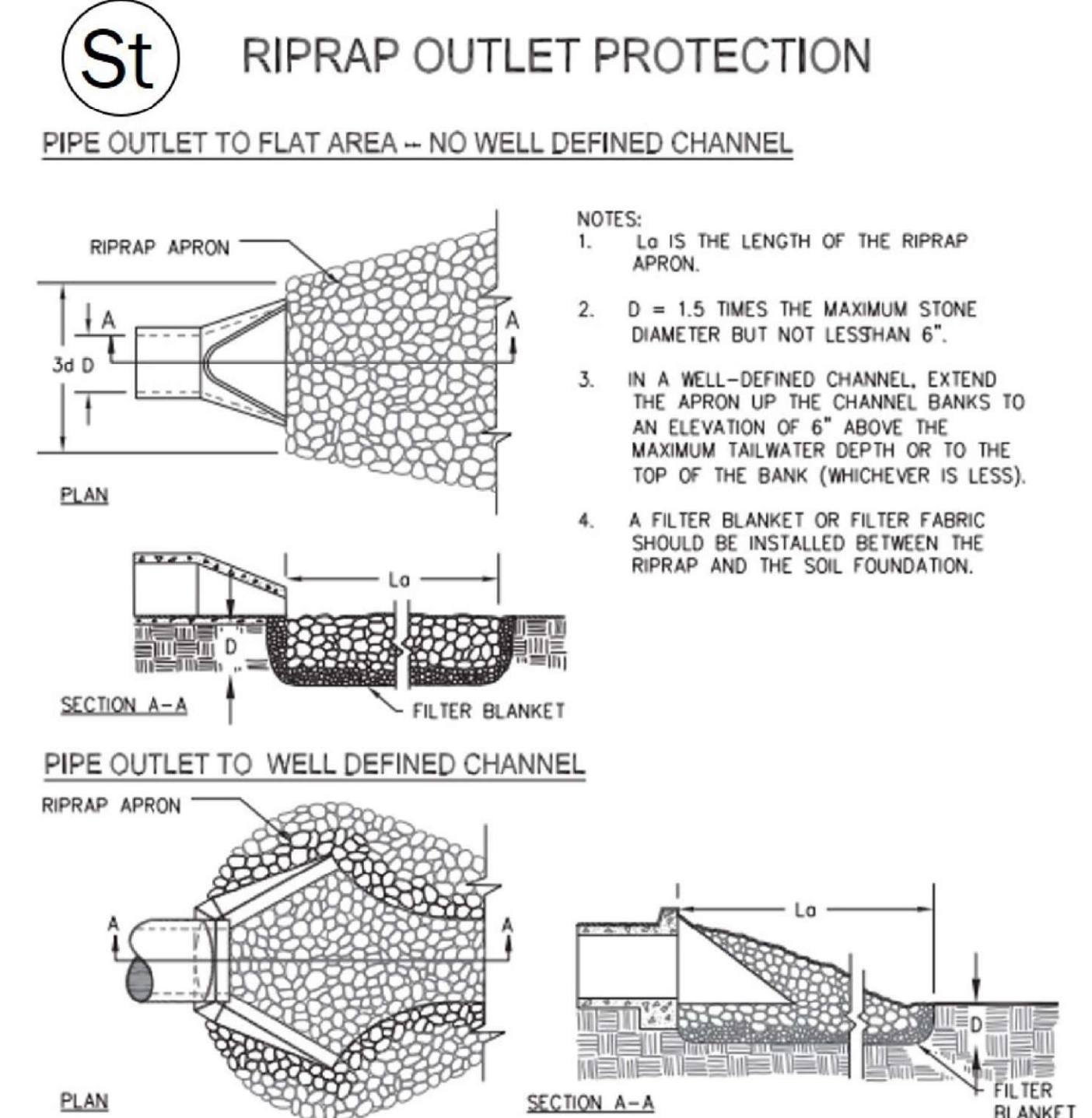
- AUXILIARY BMPs INCLUDING DIVERSIONS, DIKES, OR BERMS WILL BE CONSTRUCTED TO RETAIN, DIRECT, AND CONTROL SURFACE WATER RUNOFF FROM AFFECTED AREAS INTO DESIGNED SEDIMENT CONTROL STRUCTURES. SURFACE WATER DISCHARGE WILL BE CONTROLLED AND RELEASED IN A NON-EROSIVE VELOCITY ONTO STABILIZED AREAS OR INTO STABILIZED CHANNELS.
- CONTAINMENT BERMS WILL BE DESIGNED TO PROVIDE A MINIMUM OF 3 FEET OF FREEBOARD.
- THE BERM ALONG THE SOUTHERN SITE BOUNDARY WILL BE CONSTRUCTED AS DEPICTED IN TYPICAL CROSS-SECTIONS (SHEET 5). CRESTS WILL BE SLOPED TO DIVERT STORMWATER TOWARD THE MINE AREA. THE TOP AND EXTERIOR SLOPE AND TOE OF ALL BERMS WILL BE GRASSED WITH QUICK-GROWING/GERMINATED GRASSES. SILT FENCING WILL BE INSTALLED ALONG THE EXTERIOR TOE OF THE OUTER BERMS, AND IN ALL AREAS WHERE DEEMED NECESSARY FOR EROSION CONTROL. SILT FENCING WILL BE ARMORED WITH STACKED HAY BALES ABUTTING THE FENCE PERPENDICULAR TO THE DIRECTION OF STORMWATER FLOW WHERE NECESSARY.
- AUXILIARY BMPs WILL BE SEEDED WITH APPROPRIATE GRASSES (BASED ON PLANTING SEASON) AS SOON AS POSSIBLE. EFFORT WILL BE MADE TO UTILIZE NATURAL EXISTING VEGETATION IN THOSE AREAS WHERE BUFFERS ARE PROPOSED OR WHERE PRACTICAL.

TEMPORARY VEGETATION

- DISTURBED AREAS LEFT EXPOSED FOR A PERIOD GREATER THAN 14 DAYS WILL BE STABILIZED WITH MULCH OR TEMPORARY SEEDING.
- SEEDBED PREPARATION - WHEN A HYDRAULIC SEEDER IS USED, SEEDBED PREPARATION IS NOT REQUIRED. WHEN USING CONVENTIONAL OR HANDSEEDING, SEEDBED PREPARATION IS NOT REQUIRED IF THE SOIL MATERIAL IS LOOSE AND NOT SEALED BY RAINFALL. WHEN SOIL HAS BEEN SEALED BY RAINFALL OR CONSISTS OF SMOOTH CUT SLOPES, THE SOIL WILL BE PITTED, TRENCHED OR OTHERWISE SCARIFIED TO PROVIDE A PLACE FOR SEED TO LODGE AND GERMINATE.
- LIME AND FERTILIZER - AGRICULTURAL LIME IS REQUIRED UNLESS SOIL TESTS INDICATE OTHERWISE. APPLY AGRICULTURAL LIME AT A RATE OF ONE TON PER ACRE. FERTILIZER SHOULD BE APPLIED BEFORE LAND PREPARATION AND INCORPORATED WITH A DISK, RIPPER OR CHISEL.
- TEMPORARY VEGETATION SPECIES WILL BE PLANTED IN ACCORDANCE WITH TABLE 6-4.1 - TEMPORARY COVER OR COMPANION COVER CROPS. IN THE MANUAL FOR SEDIMENT AND EROSION CONTROL IN GEORGIA, 2016.

NPDES NOTES

- STORMWATER FALLING WITHIN THE ACTIVE MINING AREA, TO INCLUDE THE CONVEYORS AND TOPSOIL AND TAILINGS STOCKPILES WILL BE DIRECTED BACK INTO THE MINING PIT AS PRACTICAL. FOR STORMWATER DISCHARGES OFF-SITE, THE FACILITY WILL OPERATE UNDER A DNR-EPD GENERAL PERMIT NO. GAR050000 STORMWATER DISCHARGES ASSOCIATED WITH INDUSTRIAL ACTIVITIES.
- STORMWATER FALLING WITHIN THE PCP/WCP AREA WILL BE DIRECTED INTO THE PROCESS PONDS AND RECIRCULATED AS PROCESS WATER.
- ROUTINE DEWATERING OF THE MINE PIT IS NOT ANTICIPATED. AFTER EQUIPMENT SHUTDOWNS OR HEAVY RAIN EVENTS, IF DEWATERING IS NECESSARY, THIS WATER WILL BE PUMPED TO A HOLDING POND AND SUBSEQUENTLY USED FOR PROCESS MAKE-UP WATER.



SHEET 9: EROSION & SEDIMENT CONTROL NOTES & DETAILS

TWIN PINES MINERALS, LLC SAUNDERS DEMONSTRATION MINE (ID NO. 2073)

ST. GEORGE, CHARLTON COUNTY, GEORGIA

DRAWN BY: DEK
CHECKED BY: SGR
DRAWING DATE: 11/13/2020
REVISION DATE: 11/19/2021
TTL JOB NO.: 000180200804.00
APPROX. SCALE: N.T.S.