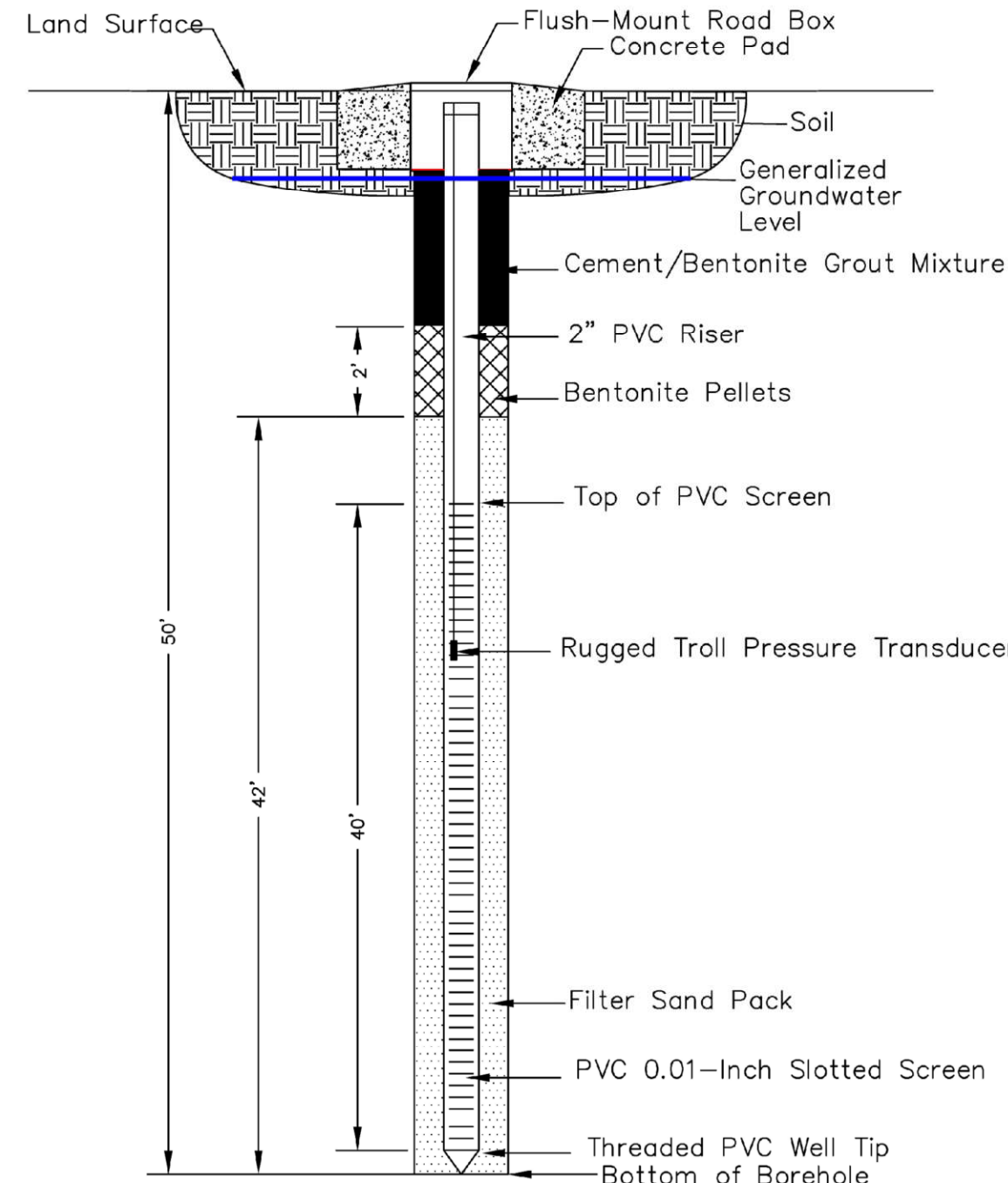


GROUNDWATER MONITORING TABLE					
ID	ELEVATION	QUALITY	ID	ELEVATION	QUALITY
PZ01S	X		PZ48D	X	
PZ01D	X		PZ49	X	
PZ02	X		PZ50	X	
PZ03S	X		PZ51S	X	
PZ03D	X		PZ51D	X	
PZ04	X		PZ52	X	
PZ05	X		PZ53	X	
PZ06	X		PZ55S	X	
PZ07	X		PZ55D	X	
PZ08	X		PZ56S	X	
PZ09	X		PZ56D	X	
PZ10	X		PZ57S	X	
PZ11	X		PZ57D	X	
PZ12S	X		PZ58S	X	
PZ12D	X		PZ58D	X	
PZ13	X		OWB1BS	X	
PZ14	X		OWB1S	X	
PZ15	X		OWB1D	X	
PZ16S	X		MPZ-01S	X	X
PZ16D	X		MPZ-01D	X	X
PZ17S	X		MPZ-02	X	X
PZ17D	X		MPZ-03	X	X
PZ18	X		MPZ-04	X	X
PZ19	X		MPZ-05S	X	X
PZ20S	X		MPZ-05D	X	X
PZ20D	X		MPZ-06	X	X
PZ21	X		MPZ-07	X	X
PZ22S	X		MPZ-08	X	X
PZ22D	X		MPZ-09	X	X
PZ23	X		MPZ-10S	X	X
PZ24	X		MPZ-10D	X	X
PZ25S	X		MPZ-11	X	X
PZ25D	X		MPZ-12	X	X
PZ26	X		MPZ-13S	X	X
PZ27S	X		MPZ-13D	X	X
PZ27D	X		MPZ-14	X	X
PZ28S	X		MPZ-15	X	X
PZ28D	X		MPZ-16S	X	X
PZ38	X		MPZ-16D	X	X
PZ39S	X		MPZ-17S	X	X
PZ39D	X		MPZ-17D	X	X
PZ40	X		MPZ-18	X	X
PZ41	X		PZ45D	X	
PZ42	X		PZ46	X	
PZ43	X		PZ47	X	
PZ44	X		PZ48S	X	
PZ45S	X				

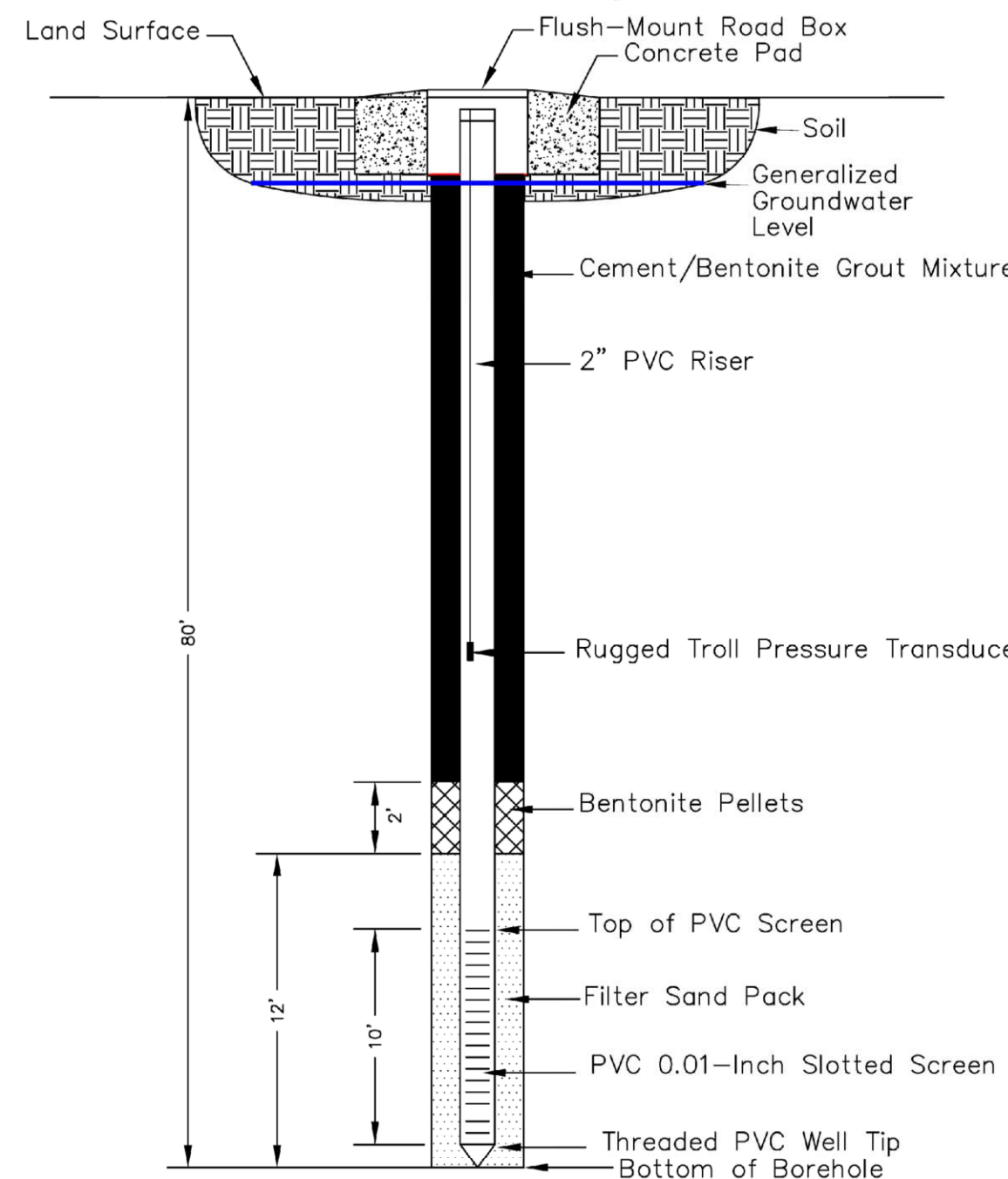
SURFACE WATER MONITORING TABLE		
ID	ELEVATION	QUALITY
SG02	X	
SG11	X	
SG22	X	
SG24	X	
SG26	X	
SG27	X	
MSW-BG04		X
MSW-BG05		X
MSW-BG06		X

Note: Eighteen piezometers (MPZ-01S, MPZ-02, MPZ-03, MPZ-04, MPZ-05S, MPZ-06, MPZ-07, MPZ-08, MPZ-09, MPZ-10S, MPZ-11, MPZ-12, MPZ-13S, MPZ-14, MPZ-15, MPZ-16S, MPZ-17S, and MPZ-18) will be installed to depths of about 50 feet below ground surface and used to monitor water quality across the maximum vertical extent of the proposed mine.

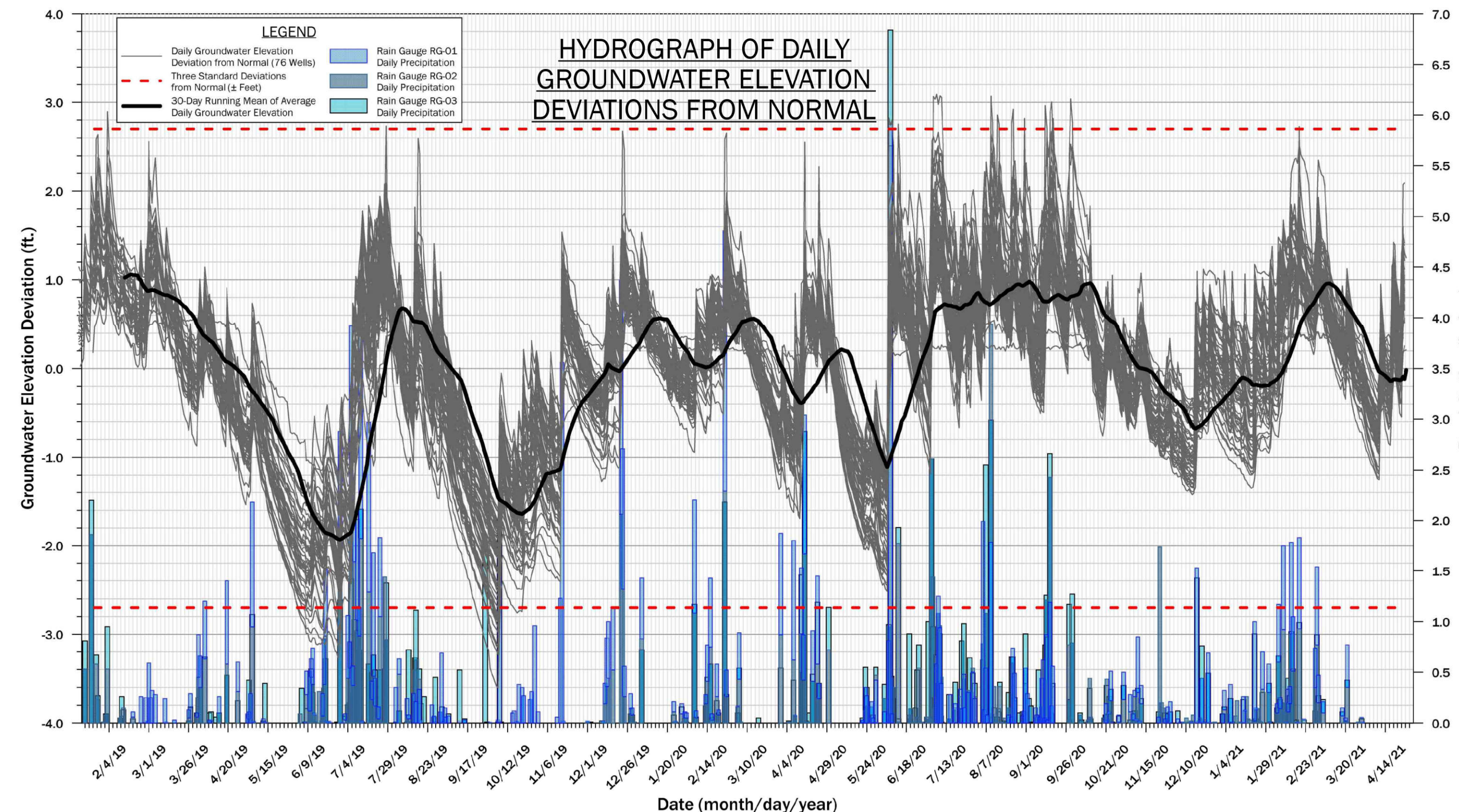
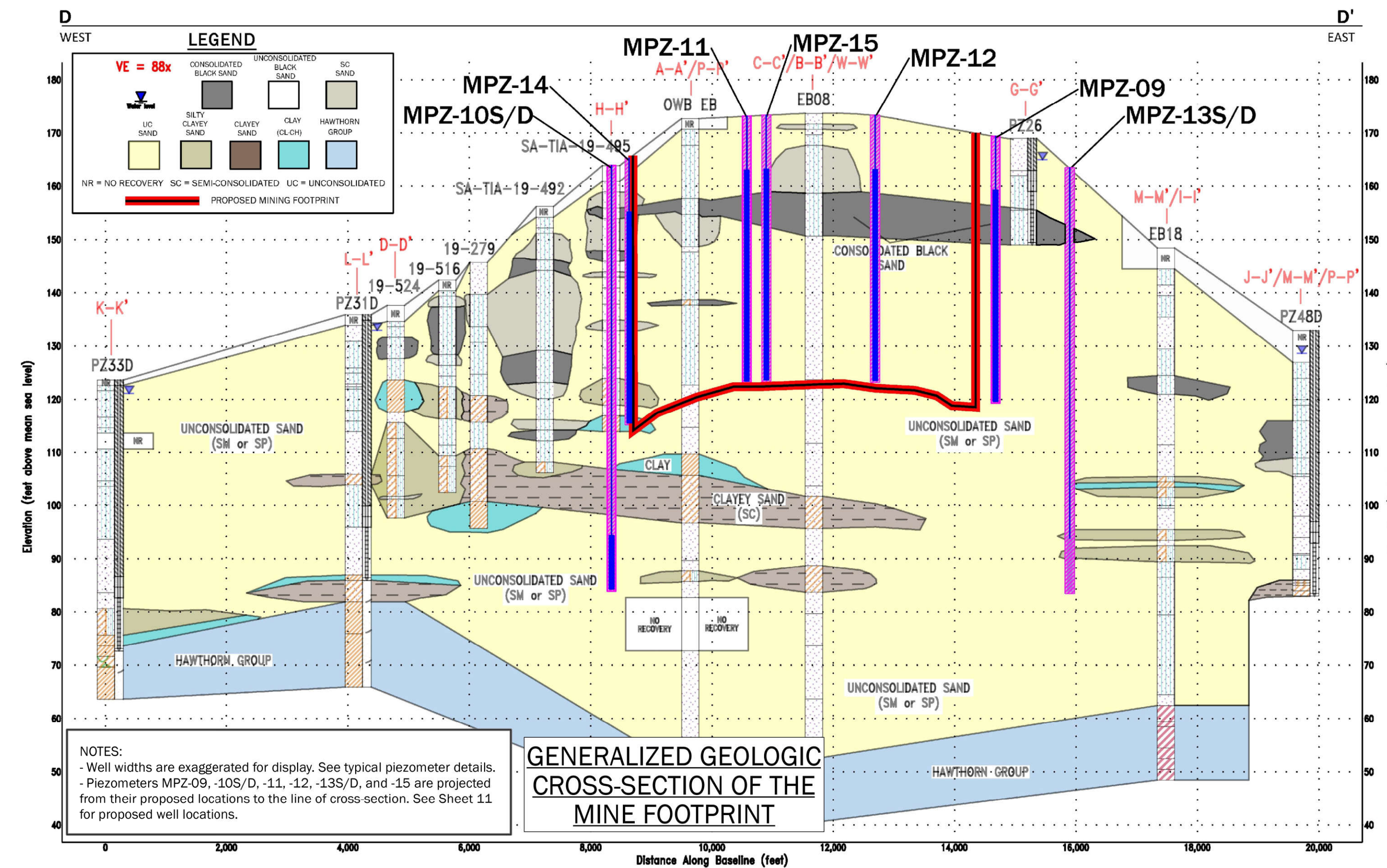


TYPICAL PIEZOMETER DETAIL (50 FEET)

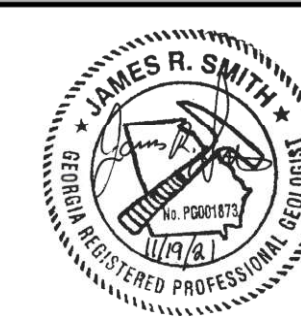
Note: Six piezometers will be installed to depths of about 80 feet below ground surface in order to monitor water levels and water quality of the Surficial Aquifer below the maximum mining depth.



TYPICAL PIEZOMETER DETAIL (80 FEET)



**SHEET 15: GROUNDWATER & SURFACE WATER MONITORING PLAN (3)**  
**TWIN PINES MINERALS, LLC SAUNDERS DEMONSTRATION MINE (ID NO. 2073)**  
 ST. GEORGE, CHARLTON COUNTY, GEORGIA



DRAWN BY: DEK
CHECKED BY: JRS
DRAWING DATE: 11/13/2020
REVISION DATE: 11/19/2021
TTL JOB NO.: 000180200804.00
APPROX. SCALE: N.T.S.