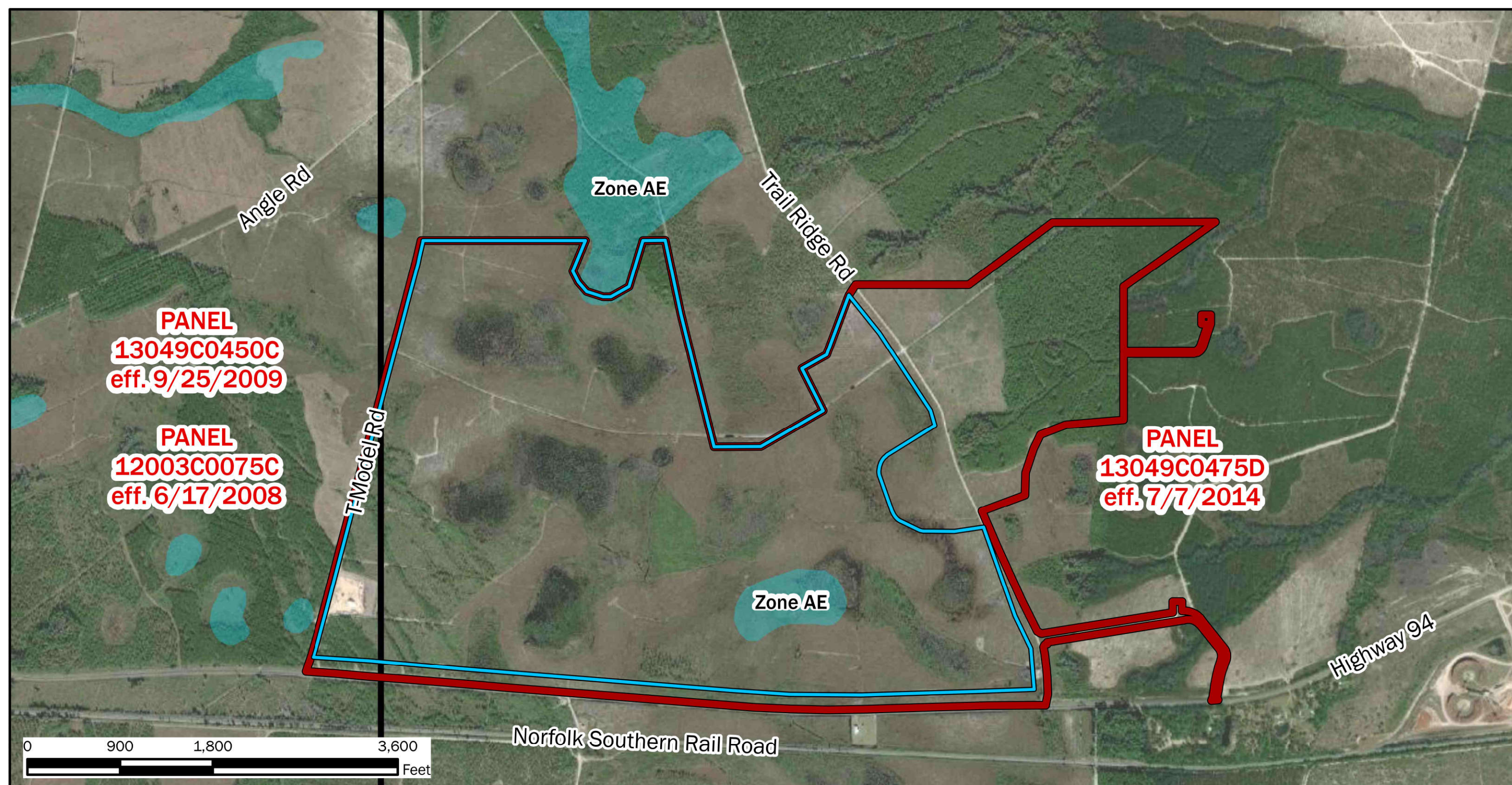
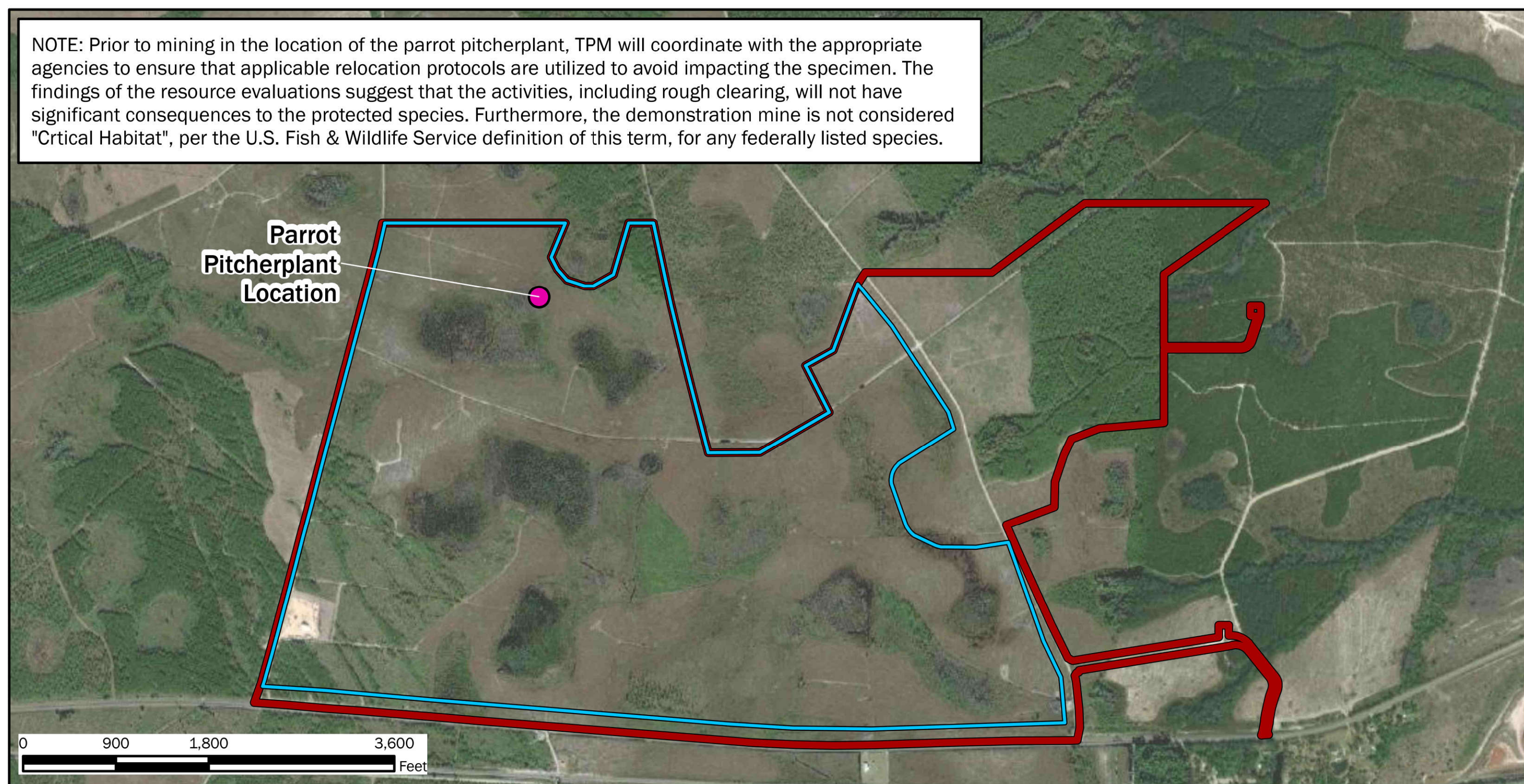


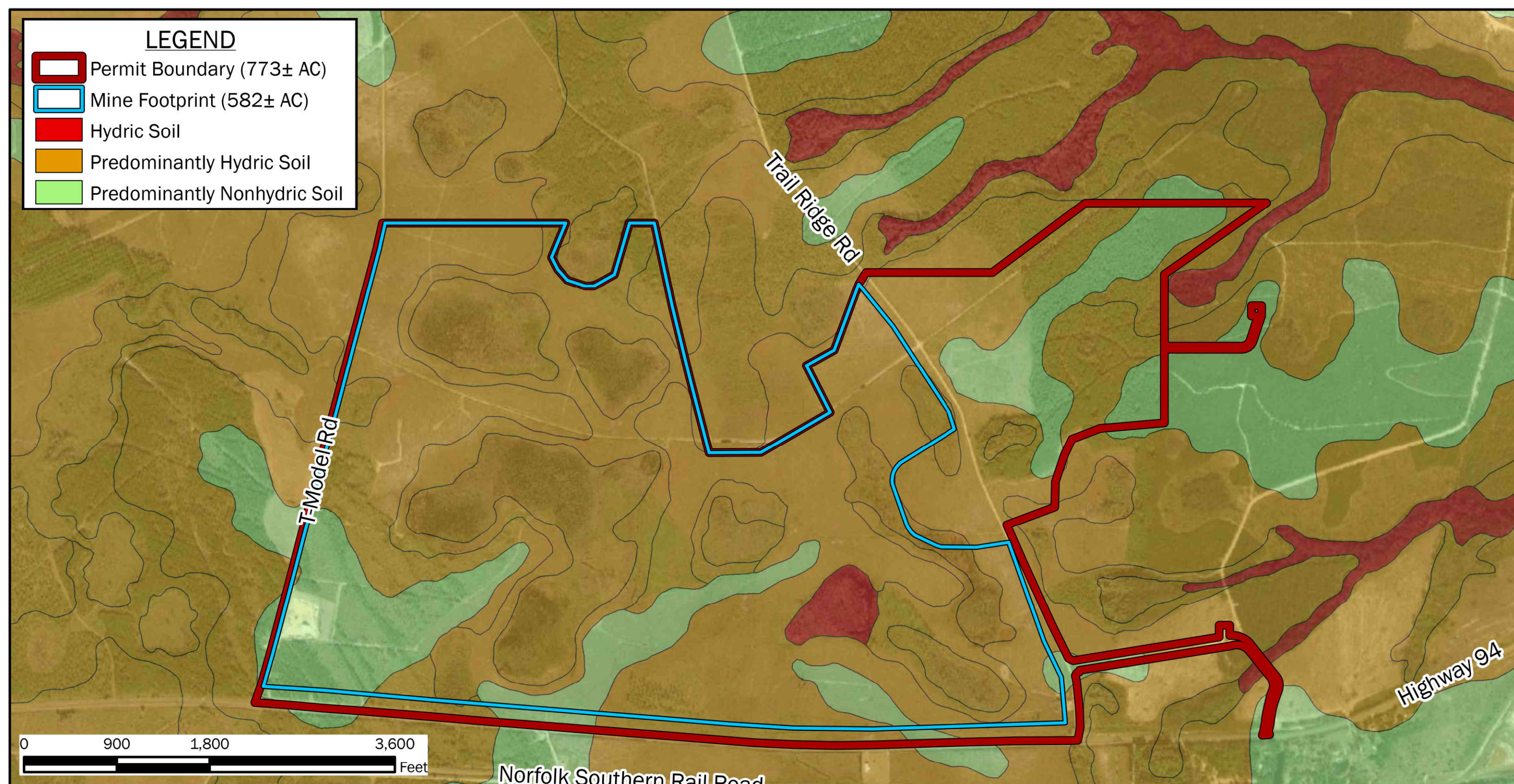
VICINITY MAP



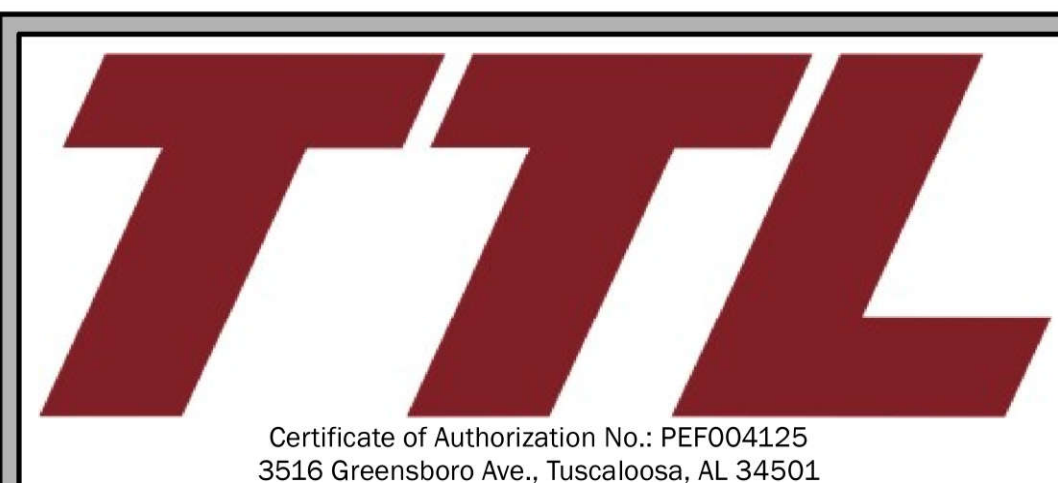
FEMA FLOOD HAZARD MAP



THREATENED & ENDANGERED SPECIES LOCATION MAP



NRCS HYDRIC SOIL RATING MAP



SHEET 16: SUPPLEMENTAL INFORMATION - VICINITY MAP, FEMA FLOOD HAZARD MAP, THREATENED & ENDANGERED SPECIES MAP, NRCS SOILS MAP
TWIN PINES MINERALS, LLC SAUNDERS DEMONSTRATION MINE (ID NO. 2073)
ST. GEORGE, CHARLTON COUNTY, GEORGIA



TOPOGRAPHIC BASEMAP: Moniac (W) & Saint George (E), Georgia, USGS 7.5 Minute Quadrangle Map, 2020 (5-ft Contour Interval). AERIAL BASEMAP: Maxar, Vivid Imagery, 11/20/2019 (West, 0.5 m Resolution) & 3/24/2018 (East, 0.46 m Resolution).

DRAWN BY: DEK
CHECKED BY: SGR
DRAWING DATE: 11/13/2020
REVISION DATE: 11/19/2021
TTL JOB NO.: 000180200804.00
APPROX. SCALE: See Panels