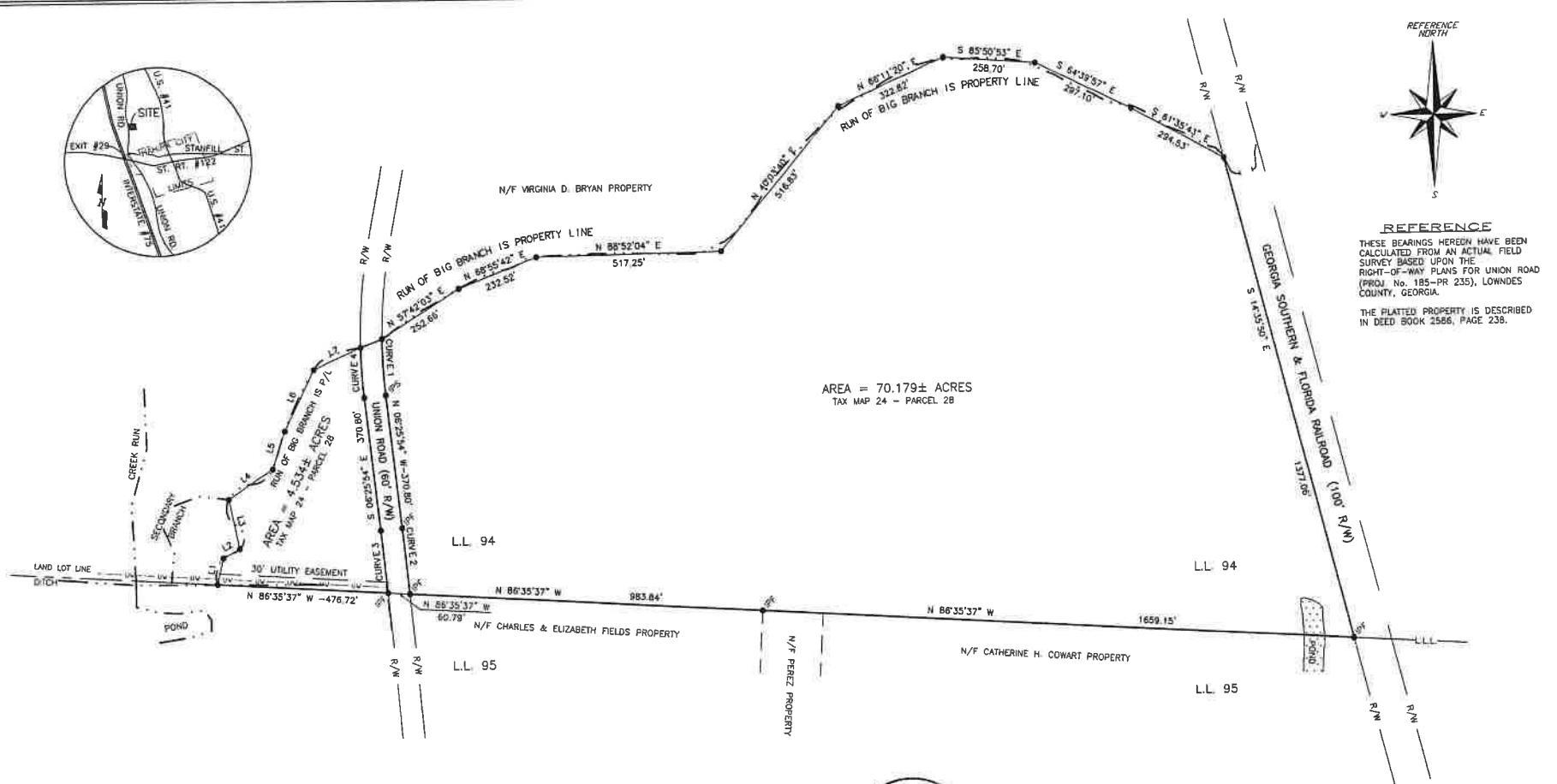


REFERENCE
 THESE BEARINGS HEREIN HAVE BEEN CALCULATED FROM AN ACTUAL FIELD SURVEY BASED UPON THE RIGHT-OF-WAY PLANS FOR UNION ROAD (PROJ. No. 185-PR 235), LOWNDES COUNTY, GEORGIA.
 THE PLATTED PROPERTY IS DESCRIBED IN DEED BOOK 2586, PAGE 238.

AREA = 70.179± ACRES
 TAX MAP 24 - PARCEL 28



LINE DATA (G/L BRANCH)

- L1-N 12°35'05" E -74.52'
- L2-N 61°36'40" E -52.37'
- L3-N 11°54'26" W -139.54'
- L4-N 55°52'45" E -148.39'
- L5-N 18°22'41" E -110.70'
- L6-N 26°06'51" E -188.33'
- L7-N 65°50'07" E -145.35'

CURVE 1
 R = 1402.66'
 L = 155.91'
 CHD = 155.85'
 BRG = N 03°14'50" W

CURVE 2
 R = 17835.79'
 L = 163.82'
 CHD = 163.82'
 BRG = N 05°08'11" W

CURVE 3
 R = 17775.79'
 L = 173.43'
 CHORD = 173.43'
 BRG = S 06°03'08" E

CURVE 4
 R = 1462.66'
 L = 139.83'
 CHORD = 138.78'
 BRG = S 03°42'45" E

GEORGIA, LOWNDES COUNTY
 RECORDED
 This City July 2004
 Plat Cabinet # 99
 Sara L. Crow
 Clerk Superior Court



LEGEND	
IRF	IRON REBAR FOUND
IRP	IRON REBAR SET
●	CORNER/ANGLE POINT
---	NOT TO SCALE
N/F	NOW OR FORMERLY
-x-	FENCE

**BOUNDARY SURVEY PLAT OF
 THE GUTHRIE LUMBER CO., INC. PROPERTY**

TOTAL AREA	LAND LOT	LAND DISTRICT	CITY	COUNTY
74.713± ACRES	94	12th	N/A	LOWNDES

PREPARED FOR RICHARD D. COOPER & JOY B. COOPER BY:
 DeVANE SURVEYING, INC.
 DEAN B. DeVANE G.S. RLS #2620
 3859 KNIGHTS ACADEMY ROAD-VALDOSTA, GEORGIA-31605
 TEL: (229) 253-8080 FAX: (229) 249-8027

I HEREBY CERTIFY THAT ALL MEASUREMENTS ARE CORRECT AND WERE PREPARED FROM AN ACTUAL FIELD SURVEY UNDER MY SUPERVISION; THE FIELD DATA UPON WHICH THIS PLAT IS BASED HAS BEEN OBTAINED FROM A CLOSED LOOP TRAVERSE HAVING AN ANGULAR ERROR OF 27.07" AND A LINEAR CLOSURE OF 1 FOOT IN 68,783 FEET. NO ADJUSTMENT HAS BEEN PERFORMED. THIS PLAT HAS BEEN CALCULATED FOR CLOSURE, AND IS ACCURATE WITHIN A MINIMUM OF 1 FOOT IN 242,581 FEET.

Dean B. DeVane 07-08-04
 DEAN B. DeVANE G.S. RLS #2620

FIELD SURVEY: 18 MARCH 2004 (70.179± AC.)
 DATE COMPLETED: 08 JULY 2004 (4,534± AC.)

DESI PROJECT No.: 04017-C-LWN
 DRAWING: 04017C-LWN DWG

GRAPHIC SCALE: 1 INCH = 200 FEET

EQUIPMENT USED: TOPCON GTS-802AR
 HUSKY MP-2500 D.C.

