

Michael Clements
2022.08.12 15:57:20 -04:00'

NOT FOR CONSTRUCTION
© 02/2022

NO.	DATE	DESCRIPTION
1	02/2022	ISSUED FOR INTERCONNECTION
2		
3		
4		
5		
6		
7		
8		
9		
10		
11		
12		
13		
14		
15		
16		
17		
18		
19		
20		
21		
22		
23		
24		
25		

PROJECT NAME:
**MORVEN SOLAR, LLC
SOLAR ELECTRIC POWER PLANT**

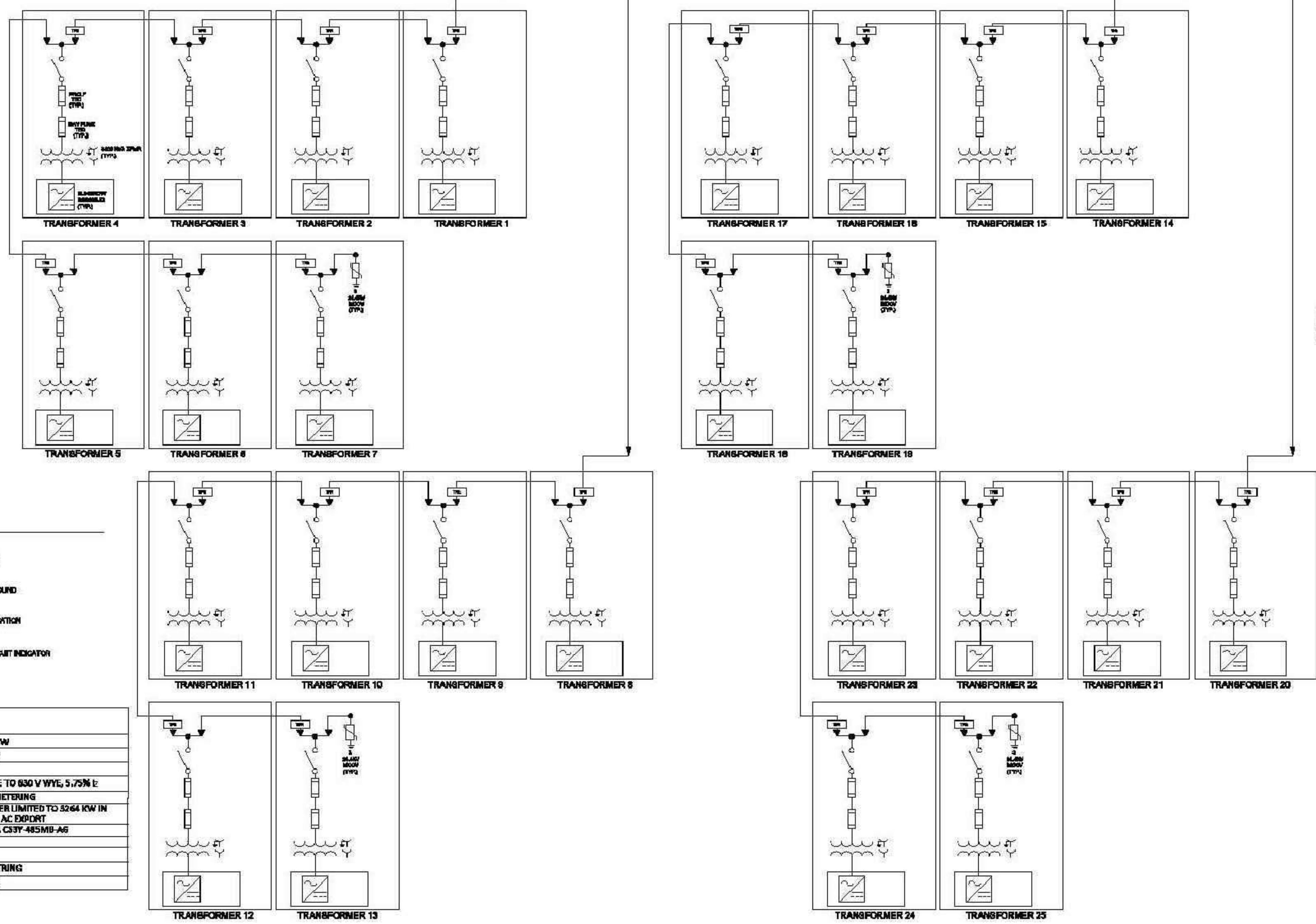
DRAWING TITLE:
AC SINGLE LINE DIAGRAM

DRAWN BY: DJW
CHECKED BY: GBR
APPROVED BY: MLC
DATE: 02/18/2022
SCALE: NTS
FILE NUMBER: 000005-100
SHEET:

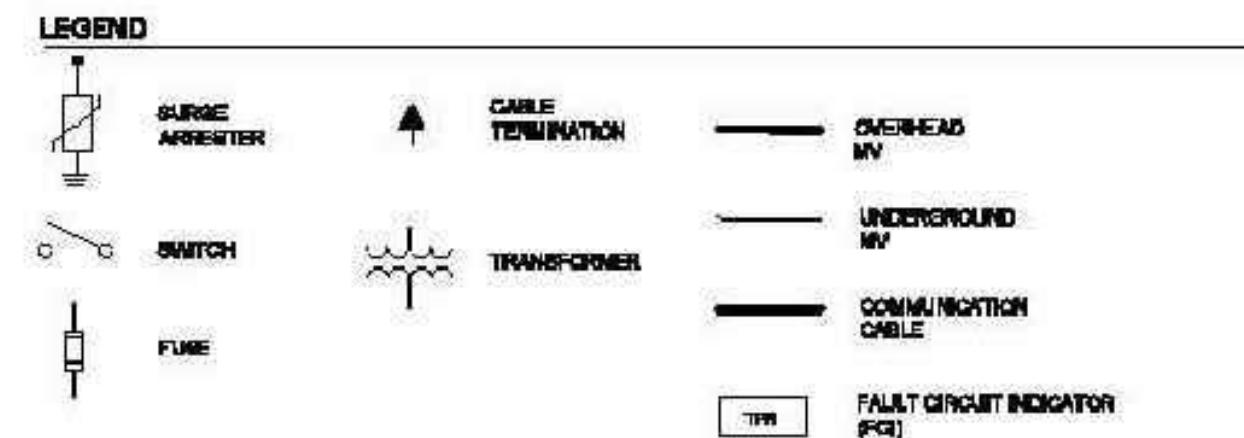
E-100

TO MORVEN SUBSTATION

FEEDER 1 FEEDER 2 FEEDER 3 FEEDER 4



- NOTES:**
- SEE TABLE ON GENERAL NOTES FOR EQUIPMENT NUMBERING CONVENTION.
 - THE AC SLD IS TYPICAL.
 - THE DC SYSTEM IS FUNCTIONALLY ORDERED.
 - THE SUBMISSION OF THIS DRAWING ACKNOWLEDGES THIS IS THE FINAL DESIGN AND ANY CHANGE TO THIS DIAGRAM COULD RESULT IN A MATERIAL MODIFICATION AS DEFINED BY THE STATE INTERCONNECTION BY ORDER. ANY CHANGES TO THIS DIAGRAM MUST BE SUBMITTED FOR APPROVAL TO THE INTERCONNECTION UTILITY.
 - MAXIMUM PHYSICAL AC EXPORT CAPABILITY = 30,000 KW (AC) BASED ON PLANT CONTROLLER.
 - DELTA TRIP FAULT CIRCUIT INDICATOR TO BE PROCURED AND INSTALLED BY CONTRACTOR.



SYSTEM SUMMARY	
DC CAPACITY (KW)	112,090.25 KW
AC CAPACITY (KW)	80,000 KW
POWER RATIO DC/AC	140%
TRANSFORMER	(25) 3600 KVA AT 34.5 KV GND WYE TO 630 V WYE, 5.75% L
MONITORING	REVENUE-GRADE METERING
INVERTER(S)	(25) SUNGROW SG3600LTD. INV POWER LIMITED TO 3264 KW IN ORDER TO MEET MAX AC EXPORT
MODULE	(231,114) CANADIAN SOLAR CS3Y-485M0-A6
MODULE STC RATING	485W
STRING QUANTITY	8,889
STRING SIZE	26 MODULES/STRING
LOCATION	GEORGIA

SLD (E-100)

NOTE: SLD/ ELECTRICAL DESIGN IN COMPLIANCE WITH SECTION 9-8.10 (B)(2) OF ORDINANCE

SHEET NAME:

APPENDIX - SLD 2

SHEET NUMBER:

APP-104