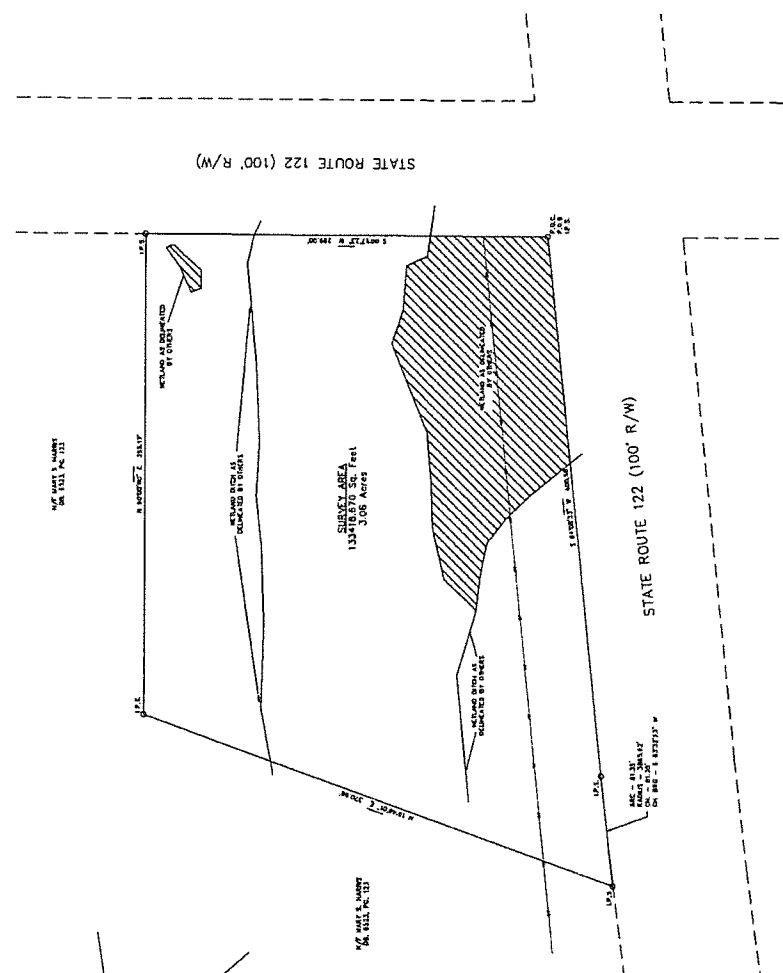
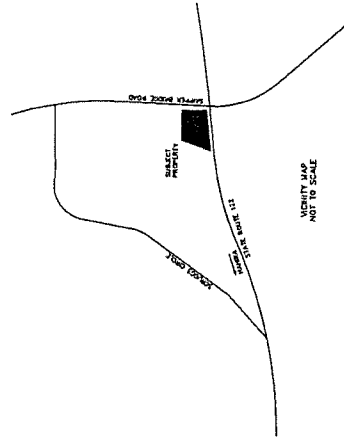


**RECORDING NOTE:**  
 1) THIS PLAT HAS BEEN SUBMITTED FOR PUBLIC RECORDATION IN ACCORDANCE WITH THE REQUIREMENTS OF THE STATE BOARD OF SURVEYORS AND MAPPING.  
 2) THIS PLAT IS SUBJECT TO ALL APPLICABLE STATE AND FEDERAL LAWS, REGULATIONS AND ORDINANCES.  
 3) THIS PLAT IS SUBJECT TO ALL APPLICABLE STATE AND FEDERAL LAWS, REGULATIONS AND ORDINANCES.  
 4) THIS PLAT IS SUBJECT TO ALL APPLICABLE STATE AND FEDERAL LAWS, REGULATIONS AND ORDINANCES.  
 5) THIS PLAT IS SUBJECT TO ALL APPLICABLE STATE AND FEDERAL LAWS, REGULATIONS AND ORDINANCES.

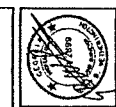


The property shown herein is surveyed based on:  
 1. [Surveyor Name]  
 2. [Surveyor Name]  
 3. [Surveyor Name]  
 4. [Surveyor Name]  
 5. [Surveyor Name]  
 6. [Surveyor Name]  
 7. [Surveyor Name]  
 8. [Surveyor Name]  
 9. [Surveyor Name]  
 10. [Surveyor Name]  
 11. [Surveyor Name]  
 12. [Surveyor Name]  
 13. [Surveyor Name]  
 14. [Surveyor Name]  
 15. [Surveyor Name]  
 16. [Surveyor Name]  
 17. [Surveyor Name]  
 18. [Surveyor Name]  
 19. [Surveyor Name]  
 20. [Surveyor Name]  
 21. [Surveyor Name]  
 22. [Surveyor Name]  
 23. [Surveyor Name]  
 24. [Surveyor Name]  
 25. [Surveyor Name]  
 26. [Surveyor Name]  
 27. [Surveyor Name]  
 28. [Surveyor Name]  
 29. [Surveyor Name]  
 30. [Surveyor Name]  
 31. [Surveyor Name]  
 32. [Surveyor Name]  
 33. [Surveyor Name]  
 34. [Surveyor Name]  
 35. [Surveyor Name]  
 36. [Surveyor Name]  
 37. [Surveyor Name]  
 38. [Surveyor Name]  
 39. [Surveyor Name]  
 40. [Surveyor Name]  
 41. [Surveyor Name]  
 42. [Surveyor Name]  
 43. [Surveyor Name]  
 44. [Surveyor Name]  
 45. [Surveyor Name]  
 46. [Surveyor Name]  
 47. [Surveyor Name]  
 48. [Surveyor Name]  
 49. [Surveyor Name]  
 50. [Surveyor Name]

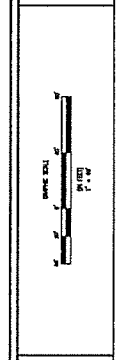
THIS PLAT WAS PREPARED FOR THE EXCLUSIVE USE OF THE SURVEYOR AND HIS ASSISTANTS AND IS NOT TO BE REPRODUCED OR COPIED IN ANY MANNER WITHOUT THE WRITTEN PERMISSION OF THE SURVEYOR.

1. THE PLAT WAS PREPARED FOR THE EXCLUSIVE USE OF THE SURVEYOR AND HIS ASSISTANTS AND IS NOT TO BE REPRODUCED OR COPIED IN ANY MANNER WITHOUT THE WRITTEN PERMISSION OF THE SURVEYOR.
2. THE SURVEYOR HAS CONDUCTED A VISUAL INSPECTION OF THE PROPERTY AND HAS FOUND THAT THE INFORMATION CONTAINED HEREIN IS TRUE AND CORRECT.
3. THE SURVEYOR HAS CONDUCTED A VISUAL INSPECTION OF THE PROPERTY AND HAS FOUND THAT THE INFORMATION CONTAINED HEREIN IS TRUE AND CORRECT.
4. THE SURVEYOR HAS CONDUCTED A VISUAL INSPECTION OF THE PROPERTY AND HAS FOUND THAT THE INFORMATION CONTAINED HEREIN IS TRUE AND CORRECT.
5. THE SURVEYOR HAS CONDUCTED A VISUAL INSPECTION OF THE PROPERTY AND HAS FOUND THAT THE INFORMATION CONTAINED HEREIN IS TRUE AND CORRECT.
6. THE SURVEYOR HAS CONDUCTED A VISUAL INSPECTION OF THE PROPERTY AND HAS FOUND THAT THE INFORMATION CONTAINED HEREIN IS TRUE AND CORRECT.
7. THE SURVEYOR HAS CONDUCTED A VISUAL INSPECTION OF THE PROPERTY AND HAS FOUND THAT THE INFORMATION CONTAINED HEREIN IS TRUE AND CORRECT.
8. THE SURVEYOR HAS CONDUCTED A VISUAL INSPECTION OF THE PROPERTY AND HAS FOUND THAT THE INFORMATION CONTAINED HEREIN IS TRUE AND CORRECT.
9. THE SURVEYOR HAS CONDUCTED A VISUAL INSPECTION OF THE PROPERTY AND HAS FOUND THAT THE INFORMATION CONTAINED HEREIN IS TRUE AND CORRECT.
10. THE SURVEYOR HAS CONDUCTED A VISUAL INSPECTION OF THE PROPERTY AND HAS FOUND THAT THE INFORMATION CONTAINED HEREIN IS TRUE AND CORRECT.
11. THE SURVEYOR HAS CONDUCTED A VISUAL INSPECTION OF THE PROPERTY AND HAS FOUND THAT THE INFORMATION CONTAINED HEREIN IS TRUE AND CORRECT.
12. THE SURVEYOR HAS CONDUCTED A VISUAL INSPECTION OF THE PROPERTY AND HAS FOUND THAT THE INFORMATION CONTAINED HEREIN IS TRUE AND CORRECT.
13. THE SURVEYOR HAS CONDUCTED A VISUAL INSPECTION OF THE PROPERTY AND HAS FOUND THAT THE INFORMATION CONTAINED HEREIN IS TRUE AND CORRECT.
14. THE SURVEYOR HAS CONDUCTED A VISUAL INSPECTION OF THE PROPERTY AND HAS FOUND THAT THE INFORMATION CONTAINED HEREIN IS TRUE AND CORRECT.
15. THE SURVEYOR HAS CONDUCTED A VISUAL INSPECTION OF THE PROPERTY AND HAS FOUND THAT THE INFORMATION CONTAINED HEREIN IS TRUE AND CORRECT.
16. THE SURVEYOR HAS CONDUCTED A VISUAL INSPECTION OF THE PROPERTY AND HAS FOUND THAT THE INFORMATION CONTAINED HEREIN IS TRUE AND CORRECT.
17. THE SURVEYOR HAS CONDUCTED A VISUAL INSPECTION OF THE PROPERTY AND HAS FOUND THAT THE INFORMATION CONTAINED HEREIN IS TRUE AND CORRECT.
18. THE SURVEYOR HAS CONDUCTED A VISUAL INSPECTION OF THE PROPERTY AND HAS FOUND THAT THE INFORMATION CONTAINED HEREIN IS TRUE AND CORRECT.
19. THE SURVEYOR HAS CONDUCTED A VISUAL INSPECTION OF THE PROPERTY AND HAS FOUND THAT THE INFORMATION CONTAINED HEREIN IS TRUE AND CORRECT.
20. THE SURVEYOR HAS CONDUCTED A VISUAL INSPECTION OF THE PROPERTY AND HAS FOUND THAT THE INFORMATION CONTAINED HEREIN IS TRUE AND CORRECT.
21. THE SURVEYOR HAS CONDUCTED A VISUAL INSPECTION OF THE PROPERTY AND HAS FOUND THAT THE INFORMATION CONTAINED HEREIN IS TRUE AND CORRECT.
22. THE SURVEYOR HAS CONDUCTED A VISUAL INSPECTION OF THE PROPERTY AND HAS FOUND THAT THE INFORMATION CONTAINED HEREIN IS TRUE AND CORRECT.
23. THE SURVEYOR HAS CONDUCTED A VISUAL INSPECTION OF THE PROPERTY AND HAS FOUND THAT THE INFORMATION CONTAINED HEREIN IS TRUE AND CORRECT.
24. THE SURVEYOR HAS CONDUCTED A VISUAL INSPECTION OF THE PROPERTY AND HAS FOUND THAT THE INFORMATION CONTAINED HEREIN IS TRUE AND CORRECT.
25. THE SURVEYOR HAS CONDUCTED A VISUAL INSPECTION OF THE PROPERTY AND HAS FOUND THAT THE INFORMATION CONTAINED HEREIN IS TRUE AND CORRECT.
26. THE SURVEYOR HAS CONDUCTED A VISUAL INSPECTION OF THE PROPERTY AND HAS FOUND THAT THE INFORMATION CONTAINED HEREIN IS TRUE AND CORRECT.
27. THE SURVEYOR HAS CONDUCTED A VISUAL INSPECTION OF THE PROPERTY AND HAS FOUND THAT THE INFORMATION CONTAINED HEREIN IS TRUE AND CORRECT.
28. THE SURVEYOR HAS CONDUCTED A VISUAL INSPECTION OF THE PROPERTY AND HAS FOUND THAT THE INFORMATION CONTAINED HEREIN IS TRUE AND CORRECT.
29. THE SURVEYOR HAS CONDUCTED A VISUAL INSPECTION OF THE PROPERTY AND HAS FOUND THAT THE INFORMATION CONTAINED HEREIN IS TRUE AND CORRECT.
30. THE SURVEYOR HAS CONDUCTED A VISUAL INSPECTION OF THE PROPERTY AND HAS FOUND THAT THE INFORMATION CONTAINED HEREIN IS TRUE AND CORRECT.
31. THE SURVEYOR HAS CONDUCTED A VISUAL INSPECTION OF THE PROPERTY AND HAS FOUND THAT THE INFORMATION CONTAINED HEREIN IS TRUE AND CORRECT.
32. THE SURVEYOR HAS CONDUCTED A VISUAL INSPECTION OF THE PROPERTY AND HAS FOUND THAT THE INFORMATION CONTAINED HEREIN IS TRUE AND CORRECT.
33. THE SURVEYOR HAS CONDUCTED A VISUAL INSPECTION OF THE PROPERTY AND HAS FOUND THAT THE INFORMATION CONTAINED HEREIN IS TRUE AND CORRECT.
34. THE SURVEYOR HAS CONDUCTED A VISUAL INSPECTION OF THE PROPERTY AND HAS FOUND THAT THE INFORMATION CONTAINED HEREIN IS TRUE AND CORRECT.
35. THE SURVEYOR HAS CONDUCTED A VISUAL INSPECTION OF THE PROPERTY AND HAS FOUND THAT THE INFORMATION CONTAINED HEREIN IS TRUE AND CORRECT.
36. THE SURVEYOR HAS CONDUCTED A VISUAL INSPECTION OF THE PROPERTY AND HAS FOUND THAT THE INFORMATION CONTAINED HEREIN IS TRUE AND CORRECT.
37. THE SURVEYOR HAS CONDUCTED A VISUAL INSPECTION OF THE PROPERTY AND HAS FOUND THAT THE INFORMATION CONTAINED HEREIN IS TRUE AND CORRECT.
38. THE SURVEYOR HAS CONDUCTED A VISUAL INSPECTION OF THE PROPERTY AND HAS FOUND THAT THE INFORMATION CONTAINED HEREIN IS TRUE AND CORRECT.
39. THE SURVEYOR HAS CONDUCTED A VISUAL INSPECTION OF THE PROPERTY AND HAS FOUND THAT THE INFORMATION CONTAINED HEREIN IS TRUE AND CORRECT.
40. THE SURVEYOR HAS CONDUCTED A VISUAL INSPECTION OF THE PROPERTY AND HAS FOUND THAT THE INFORMATION CONTAINED HEREIN IS TRUE AND CORRECT.
41. THE SURVEYOR HAS CONDUCTED A VISUAL INSPECTION OF THE PROPERTY AND HAS FOUND THAT THE INFORMATION CONTAINED HEREIN IS TRUE AND CORRECT.
42. THE SURVEYOR HAS CONDUCTED A VISUAL INSPECTION OF THE PROPERTY AND HAS FOUND THAT THE INFORMATION CONTAINED HEREIN IS TRUE AND CORRECT.
43. THE SURVEYOR HAS CONDUCTED A VISUAL INSPECTION OF THE PROPERTY AND HAS FOUND THAT THE INFORMATION CONTAINED HEREIN IS TRUE AND CORRECT.
44. THE SURVEYOR HAS CONDUCTED A VISUAL INSPECTION OF THE PROPERTY AND HAS FOUND THAT THE INFORMATION CONTAINED HEREIN IS TRUE AND CORRECT.
45. THE SURVEYOR HAS CONDUCTED A VISUAL INSPECTION OF THE PROPERTY AND HAS FOUND THAT THE INFORMATION CONTAINED HEREIN IS TRUE AND CORRECT.
46. THE SURVEYOR HAS CONDUCTED A VISUAL INSPECTION OF THE PROPERTY AND HAS FOUND THAT THE INFORMATION CONTAINED HEREIN IS TRUE AND CORRECT.
47. THE SURVEYOR HAS CONDUCTED A VISUAL INSPECTION OF THE PROPERTY AND HAS FOUND THAT THE INFORMATION CONTAINED HEREIN IS TRUE AND CORRECT.
48. THE SURVEYOR HAS CONDUCTED A VISUAL INSPECTION OF THE PROPERTY AND HAS FOUND THAT THE INFORMATION CONTAINED HEREIN IS TRUE AND CORRECT.
49. THE SURVEYOR HAS CONDUCTED A VISUAL INSPECTION OF THE PROPERTY AND HAS FOUND THAT THE INFORMATION CONTAINED HEREIN IS TRUE AND CORRECT.
50. THE SURVEYOR HAS CONDUCTED A VISUAL INSPECTION OF THE PROPERTY AND HAS FOUND THAT THE INFORMATION CONTAINED HEREIN IS TRUE AND CORRECT.

REVISIONS:  
 1. [Revision 1]  
 2. [Revision 2]  
 3. [Revision 3]  
 4. [Revision 4]  
 5. [Revision 5]  
 6. [Revision 6]  
 7. [Revision 7]  
 8. [Revision 8]  
 9. [Revision 9]  
 10. [Revision 10]



SHEET 1 OF 1



WATSON SERVICES, LLC  
 SURVEYING, MAPPING & PLANNING  
 1111 W. BROADWAY, SUITE 100  
 ATLANTA, GEORGIA 30334  
 (404) 525-1111  
 www.watsonservices.com

RETAINING PLAT FOR:  
**TERAMORE DEVELOPMENT, LLC**  
 NORTHEAST INTERSECTION OF US HIGHWAY 122 AND HIGHWAY 101  
 LAND LOTS 2, 110, LAND DISTRICT  
 LAWRENCE COUNTY, GEORGIA

JOB NUMBER:	23044	SURVEY DATE:	NOVEMBER 1, 2023
DRAWN/CHECKED:	CHW/DFW	PLAT DATE:	NOVEMBER 1, 2023
SCALE:	1"=40'	REVISION DATE:	N/A
FIELD BOOK:	FILE	FILE:	C:\PROJECTS\2023\23044\23044.dwg

ACCORDING TO THE PUBLIC RECORDS OF THE CLERK OF SUPERIOR COURT OF LAWRENCE COUNTY, GEORGIA, THE FOLLOWING PLAT WAS RECORDED ON NOVEMBER 1, 2023, AT 10:00 AM. THE PLAT IS SUBJECT TO ALL APPLICABLE STATE AND FEDERAL LAWS, REGULATIONS AND ORDINANCES.