

January 31, 2023

To: SRWMD, SJRWMD, partnership@sjrwmd.com

Re: **Water budget, limit water withdrawals, do better aquifer recharge, NFRWSP**

Dear Water Management Districts,

Thank you for the opportunity for public input.

At the November 15, 2022, public meeting about the North Florida Regional Water Supply Plan (NFRWSP), I thanked the presenters for all the hard work they had put into the details, such as in the [North Florida-Southeast Georgia \(NFSEG\) regional groundwater flow model](#).

I have some issues with another level. I noticed repeated assertions in the public meeting that demand or projected demand are just taken as givens. So basically anybody who wants to build a golf course, or start another titanium mine, or plant almond trees that need lots of water, that's just a given, that's demand.

Chapter 2 Hydrology of the Area

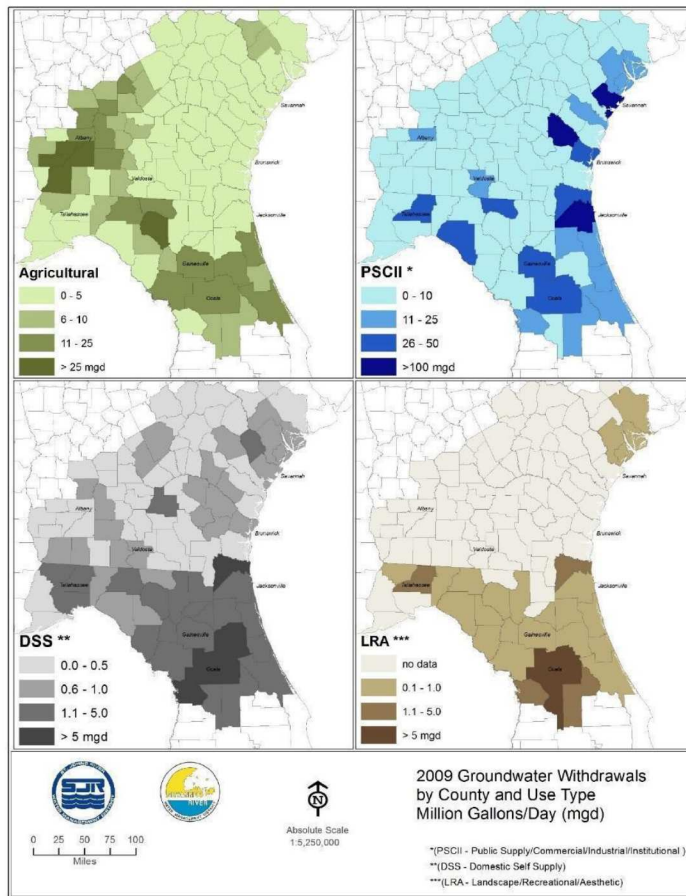
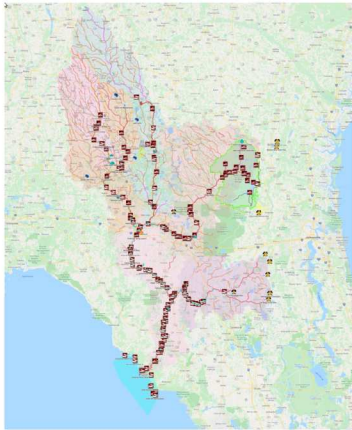
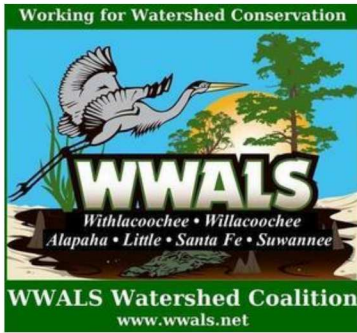


Figure 2-47. Groundwater withdrawals by county and use type (MGD), 2009

It seems strange.



PO Box 88, Hahira, GA 31632

850-290-2350

[wwalswatershed@gmail.com](mailto:wwalswatershed@gmail.com)

[www.wwals.net](http://www.wwals.net)

WWALS is an IRS 501(c)(3) nonprofit charity est. June 2012

*WWALS Watershed Coalition advocates for conservation and stewardship of the Withlacoochee, Willacochee, Alapaha, Little, Santa Fe, and Suwannee River watersheds in south Georgia and north Florida through education, awareness, environmental monitoring, and citizen activities.*

*Suwannee RIVERKEEPER® is a program and a paid staff position of WWALS.*

