

6.0 REVIEW OF ADDITIONAL ISSUES

This section addresses other issues and events of interest to the Board that warranted review.

Application of G Lands into FDEP – Wetlands Resource Permit No.144913

The area referred to as the G Lands consists of four individual proposed Reclamation Units: HCHC-13, HC-RCS-18, HC-RCS-19, and HC-RCS-20 totaling 986.7 acres (Figure 5). All mined and disturbed lands associated with the G Lands project are proposed to be reclaimed in accordance with State mandatory phosphate mine reclamation requirements in Chapters 211 and 378, Florida Statutes. The proposed reclamation was also designed in accordance with standards of Chapter 62C-16 F.A.C. and the Hamilton County Mining Ordinance. The post-mitigation land use plans and drainage basin configurations were developed to restore the pre-mining flow characteristics within each drainage basin. The proposed mitigation will ultimately return all mined and disturbed lands to viable economic and environmental productivity, compatible with the surrounding unmined areas.

Nutrien has applied for and FDEP is reviewing the ERP and State 404 individual permits and Hamilton County to amend the Master Mining Plan for modifications to encompass these reclamation areas.

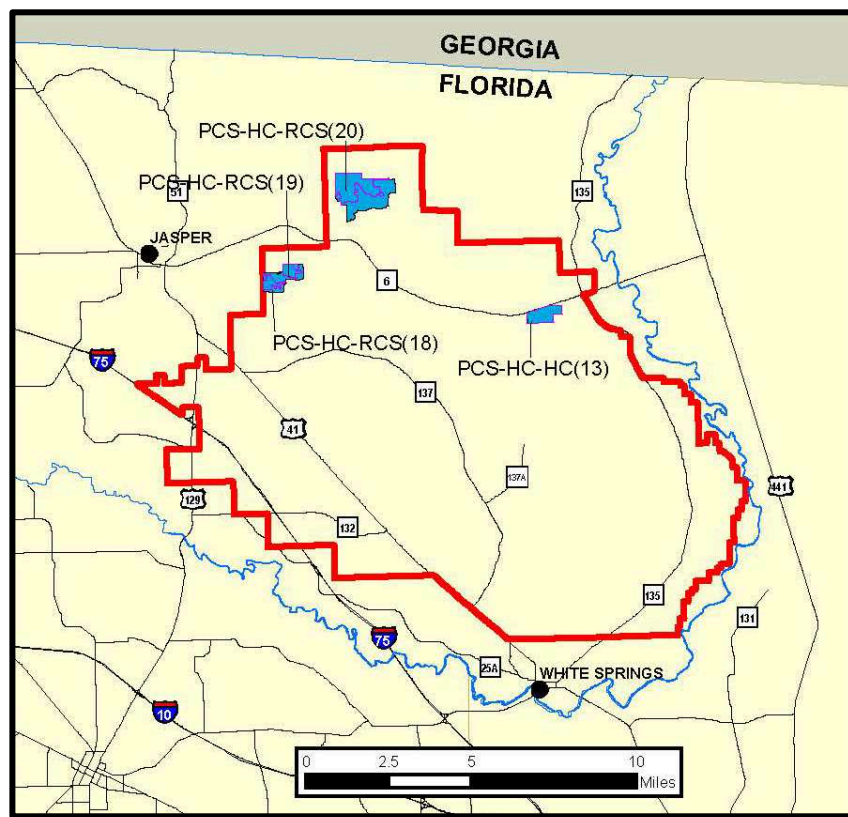


Figure 5 - Location G Lands Reclamation Units