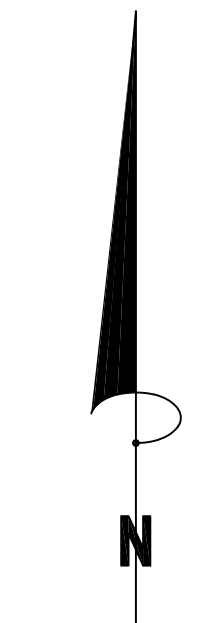
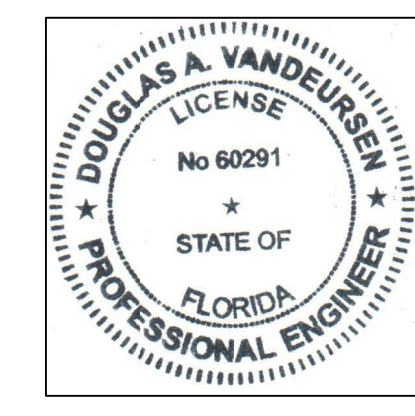


PERMITTED DRAWINGS SOUTHWEST FLORIDA WATER MANAGEMENT DISTRICT (SWFWMD)
 For construction permits, the Permittee shall notify the District in writing when construction begins.



SCALE: 1" = 200'

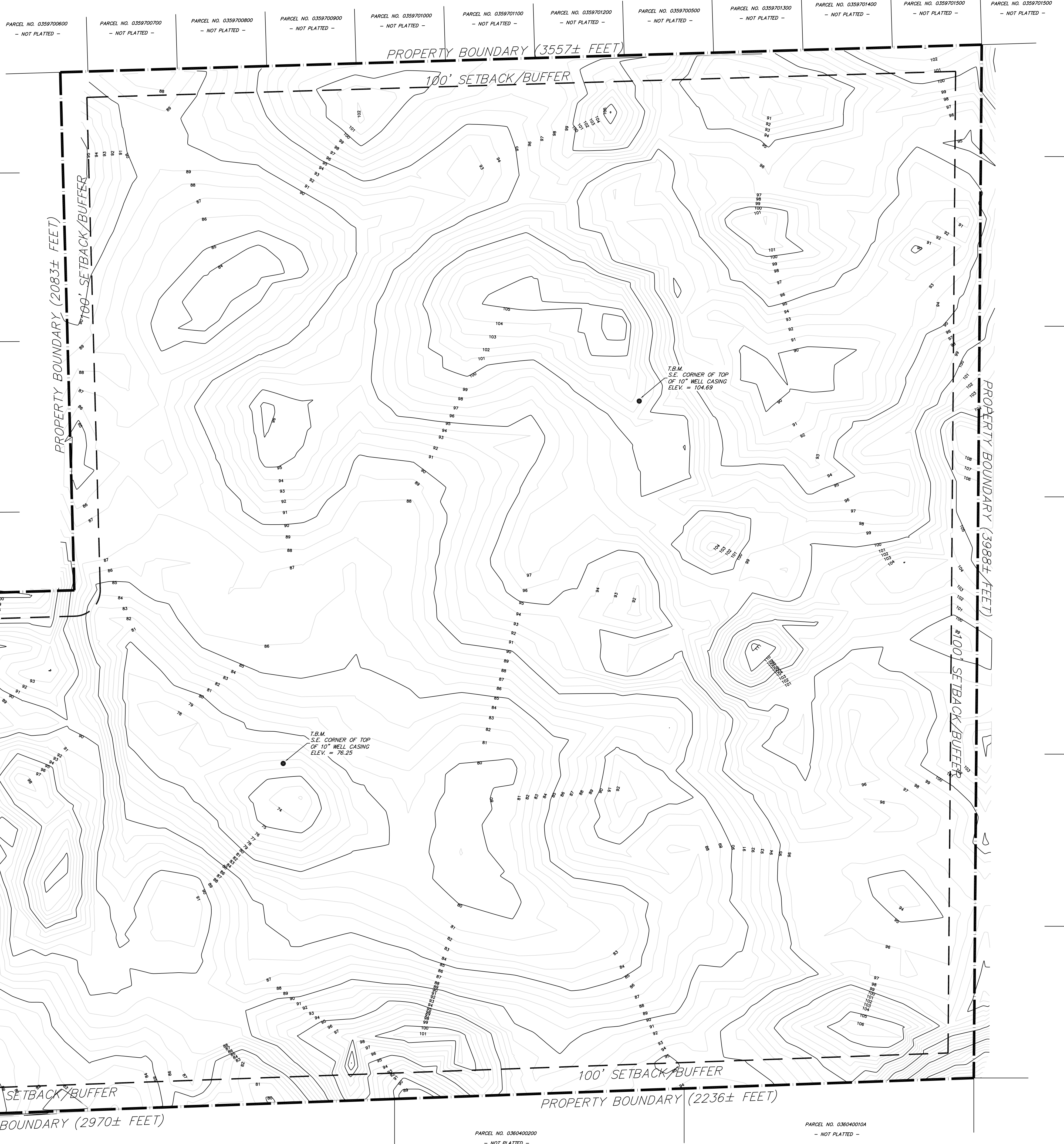
VERTICAL DATA IS BASED ON LEVY COUNTY VERTICAL CONTROL POINT "S 584", PUBLISHED ELEVATION = 105.26, NAVD-88.



THIS ITEM HAS BEEN DIGITALLY SIGNED AND SEALED BY DOUGLAS A. VANDEURSEN, P.E. ON 12-1-2022 USING A "SHA" AUTHENTICATION CODE. PRINTED COPIES OF THIS DOCUMENT ARE NOT CONSIDERED SIGNED AND SEALED AND THE "SHA" AUTHENTICATION CODE MUST BE VERIFIED ON ANY ELECTRONIC COPIES.

PARCEL NO. 0359700200
- NOT PLATTED -

A
B
C



A
B
C
D
E

DNM ENGINEERING & ASSOCIATES, INC.
 OCALA, FLORIDA 34478
 P.O. BOX 42
 (352) 624-2068
 FAX (352) 622-6643
 CAN: 9724

TOPOGRAPHY MAP
 3RT SAND MINE
 N.E. 110TH AVENUE
 BRONSON, LEVY COUNTY, FLORIDA

DRN	CHK	DATE	DESCRIPTION
DAV	DAV	13 SEP 22	ORIGINAL ISSUE
DAV	DAV	01 DEC 22	REVISED PER SWFWMD COMMENTS

Project No. 22-084
SM3
 Sheet 5 Of 8