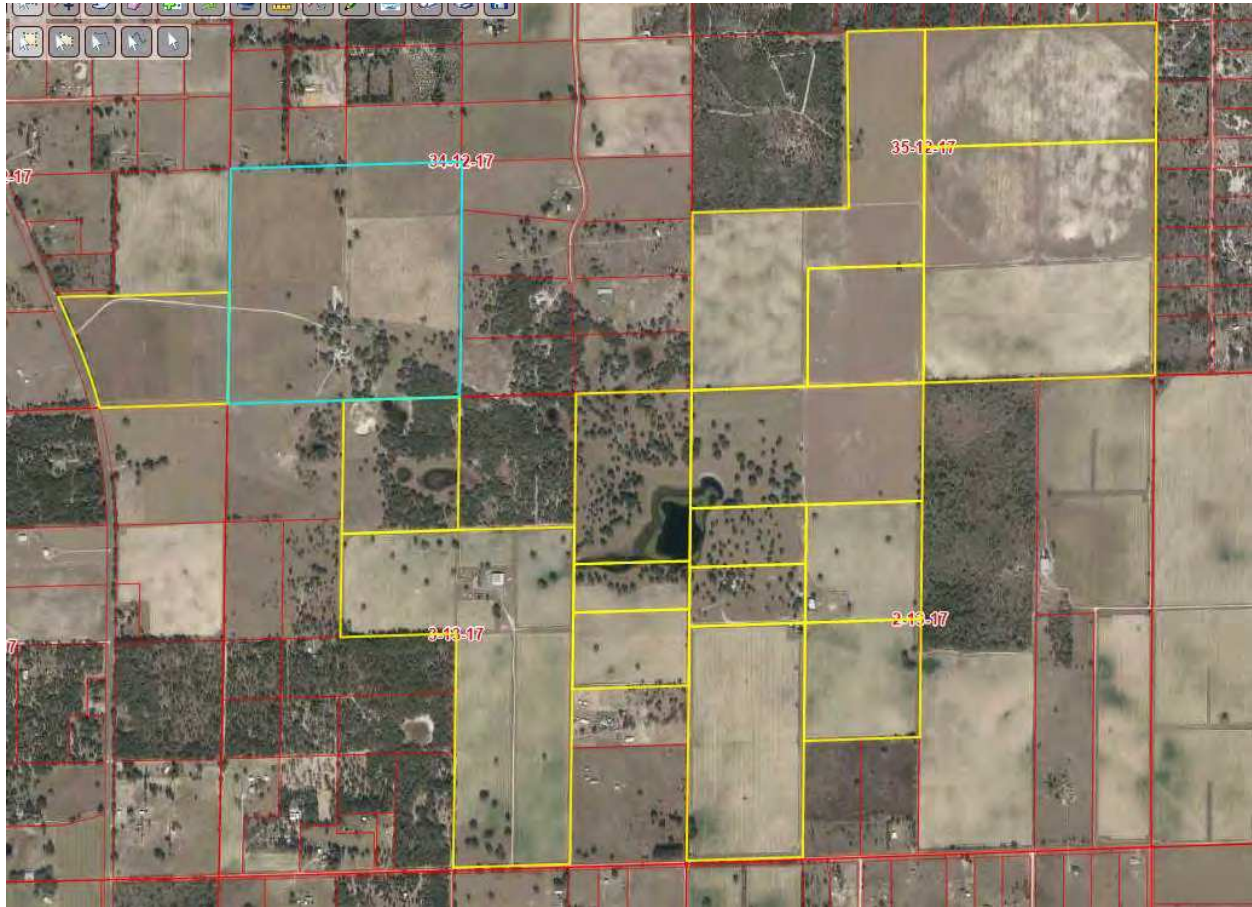


Ingress/Egress map to CR 337



Code Section Review of Application:

The following are the code sections related to special exceptions. Staff has provided comments following each applicable code section marked in **bold**.

DIVISION 5. STANDARDS AND REQUIREMENTS FOR SPECIAL EXCEPTIONS

Subdivision I. Special Exceptions in General

Sec. 50-796. Generally.

Special exceptions, as enumerated in Schedule 1. Use Regulations, of section 50-676 hereof, or as contained in the Levy County Comprehensive Plan shall be permitted only upon authorization by the board of county commissioners subsequent to review by the planning commission. In granting any special exception, the board of county commissioners may require appropriate conditions and safeguards, made a part of the terms on which the special exception is granted, which if not complied with shall be deemed a violation of this article. The board of county commissioners may grant an application for special exception, provided that such application for special exception and the uses proposed therein shall be found by the board of county commissioners to comply with the