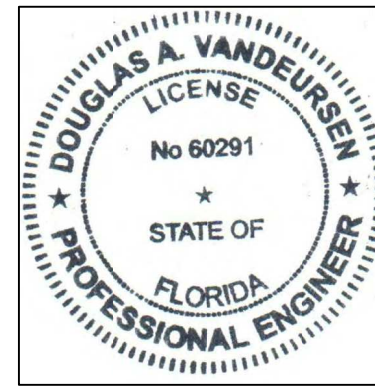


SCALE: 1" = 200'

VERTICAL DATA IS BASED ON LEVY COUNTY VERTICAL CONTROL POINT "S 584", PUBLISHED ELEVATION = 105.26, NAVD-88.

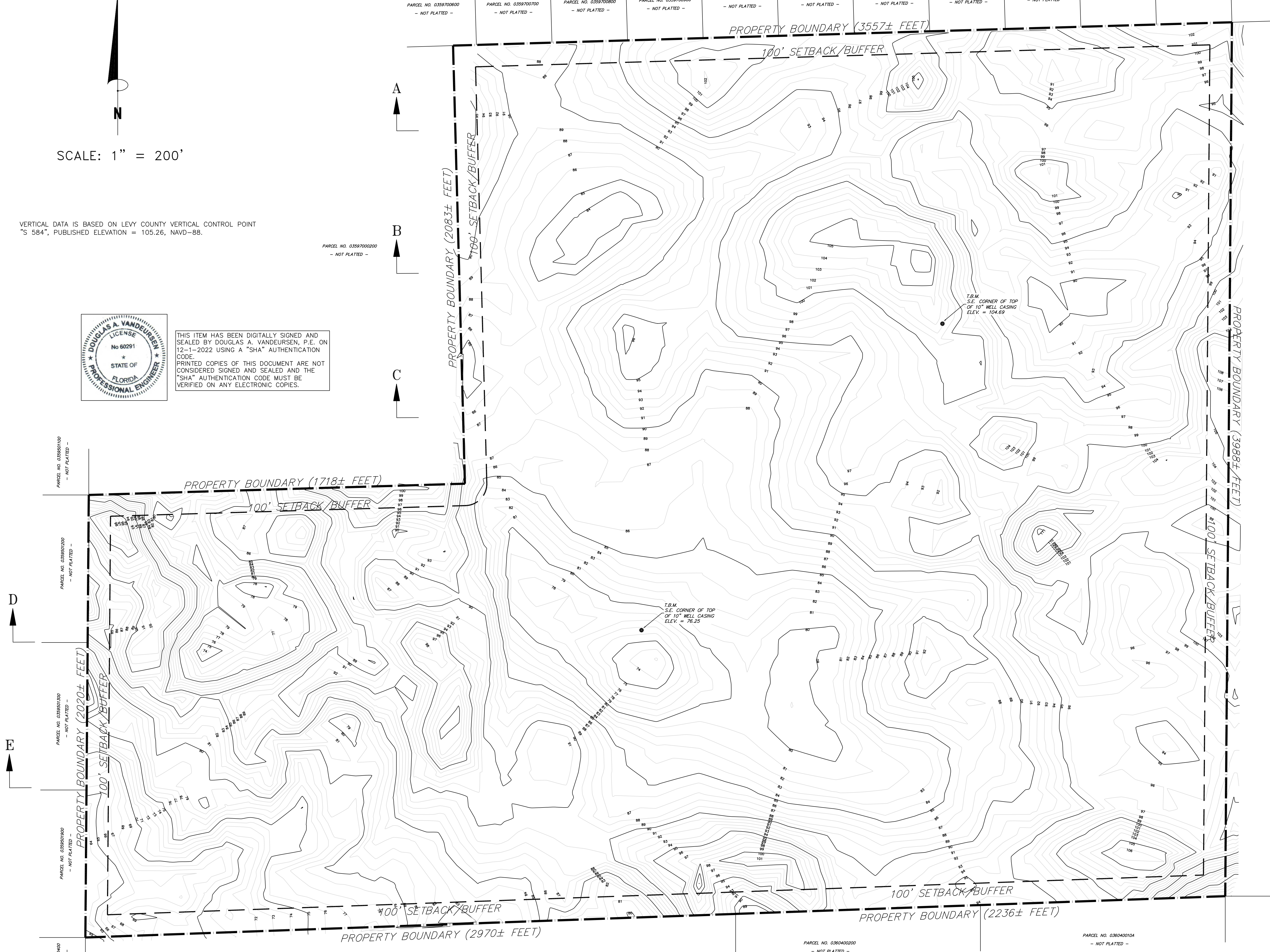
PARCEL NO. 0359700200  
- NOT PLATTED -



THIS ITEM HAS BEEN DIGITALLY SIGNED AND SEALED BY DOUGLAS A. VANDEURSEN, P.E. ON 12-1-2022 USING A "SHA" AUTHENTICATION CODE. PRINTED COPIES OF THIS DOCUMENT ARE NOT CONSIDERED SIGNED AND SEALED AND THE "SHA" AUTHENTICATION CODE MUST BE VERIFIED ON ANY ELECTRONIC COPIES.

A  
B  
C

A  
B  
C  
D  
E



**DNM ENGINEERING & ASSOCIATES, INC.**  
OCALA, FLORIDA 34478  
P.O. BOX 42  
(352) 624-2068  
FAX (352) 622-6643  
CAN: 9724

**TOPOGRAPHY MAP**  
3RT SAND MINE  
N.E. 110TH AVENUE  
BRONSON, LEVY COUNTY, FLORIDA

DRN	CHK	DATE	DESCRIPTION
DAV	DAV	13 SEP 22	ORIGINAL ISSUE
DAV	DAV	01 DEC 22	REVISED PER SWFMD COMMENTS