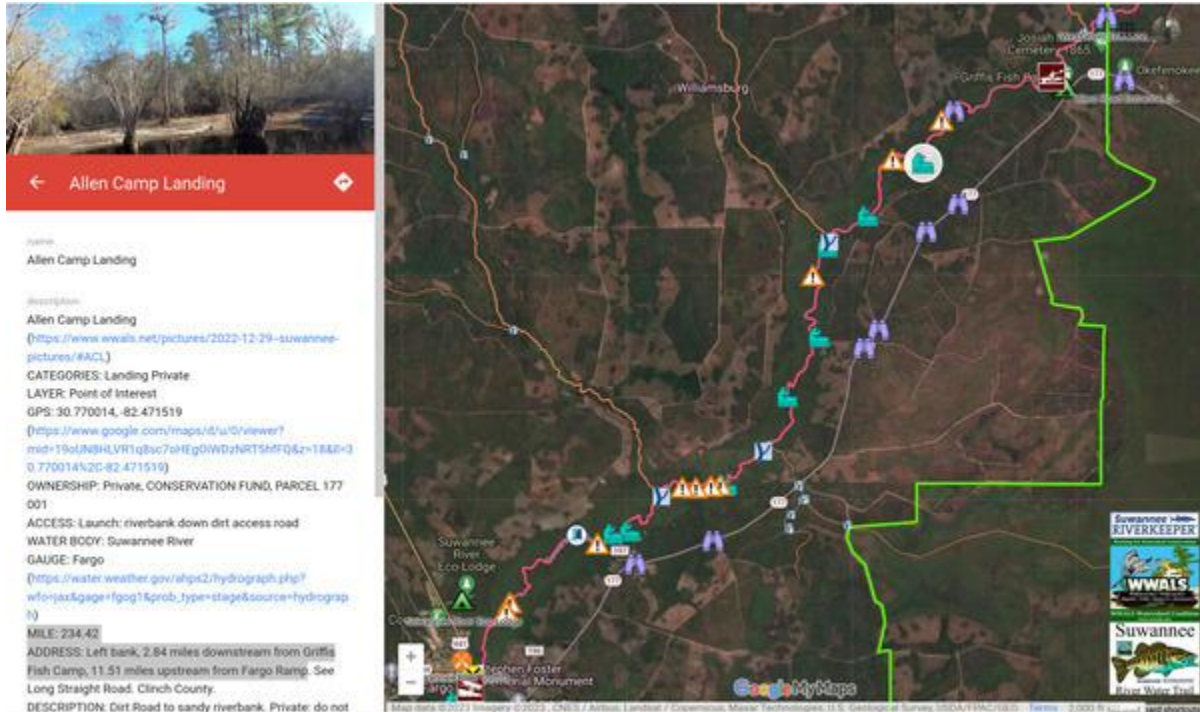


Allen Camp Landing:

The white circle highlights Allen Camp Landing. As you can see it is quite close to Griffis Fish Camp.



<https://www.google.com/maps/d/u/0/viewer?mid=19oUN8HLVR1q8sc7oHEgOiWDzNRT5hfFQ&il=30.736971546209737%2C-82.49656979392364&z=13>
MILE: 234.42; 2.84 miles downstream from Griffis Fish Camp, 11.51 miles upstream from Fargo Ramp