

Summary of Work

Task 1- Enhanced Risk MAP Intergovernmental Outreach

Despite being the smallest of Florida's five Water Management Districts, the Suwannee River Water Management District (SRWMD) is currently expecting and planning for 40% growth by 2040. The SRWMD, as a FEMA Cooperating Technical Partner (CTP), currently has eight (8) HUC8 Watersheds are undergoing flood map updates through the Risk MAP program which will impact all fifteen counties: Baker, Bradford, Columbia, Dixie, Gilchrist, Hamilton, Jackson, Jefferson, Lafayette, Levy, Madison, Putnam, Suwannee, Taylor and Union, fourteen (14) of which meet Justice 40 criteria for funding and are identified in Florida Statute as being fiscally constrained (see Figure 1 Executive summary). Figure 2 below shows the HUC 8 watersheds and the counties undergoing FEMA Risk MAP updates:

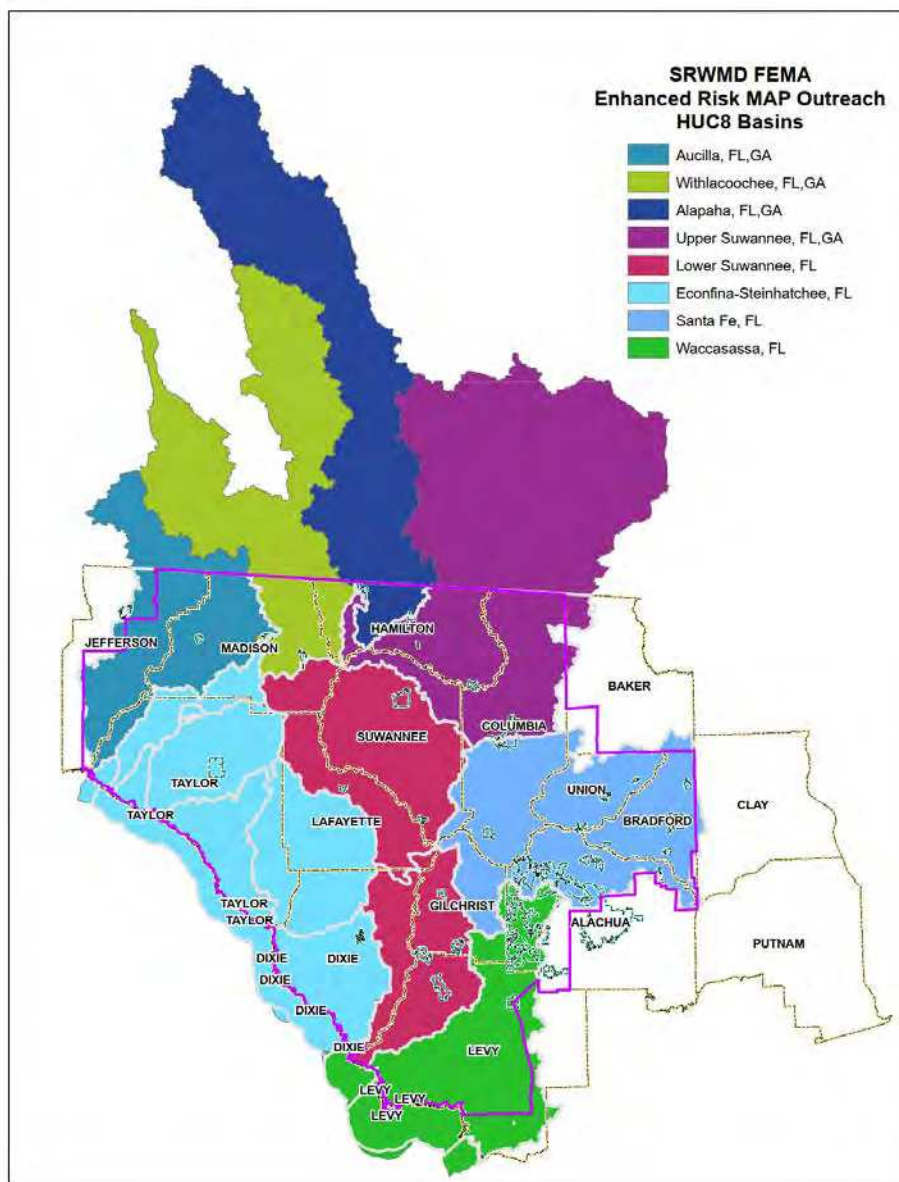


Figure 2 – HUC8 Basins Undergoing FEMA RiskMAP Updates