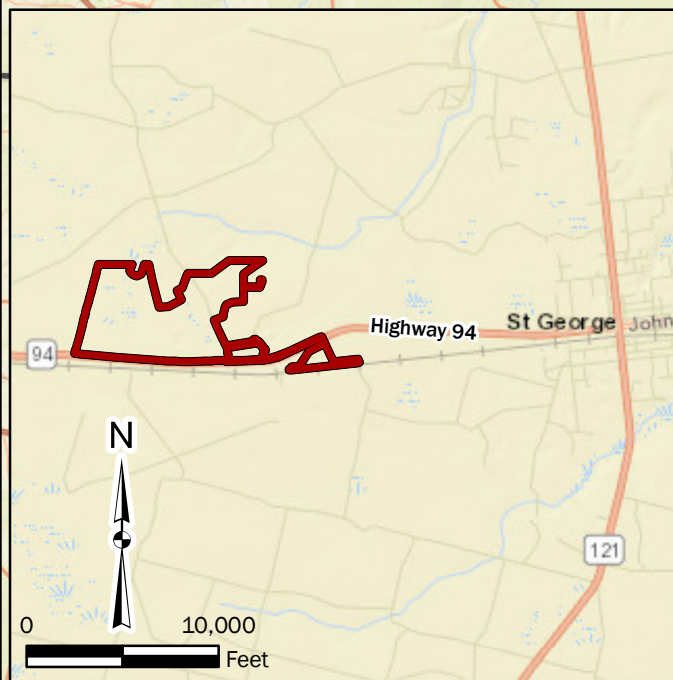
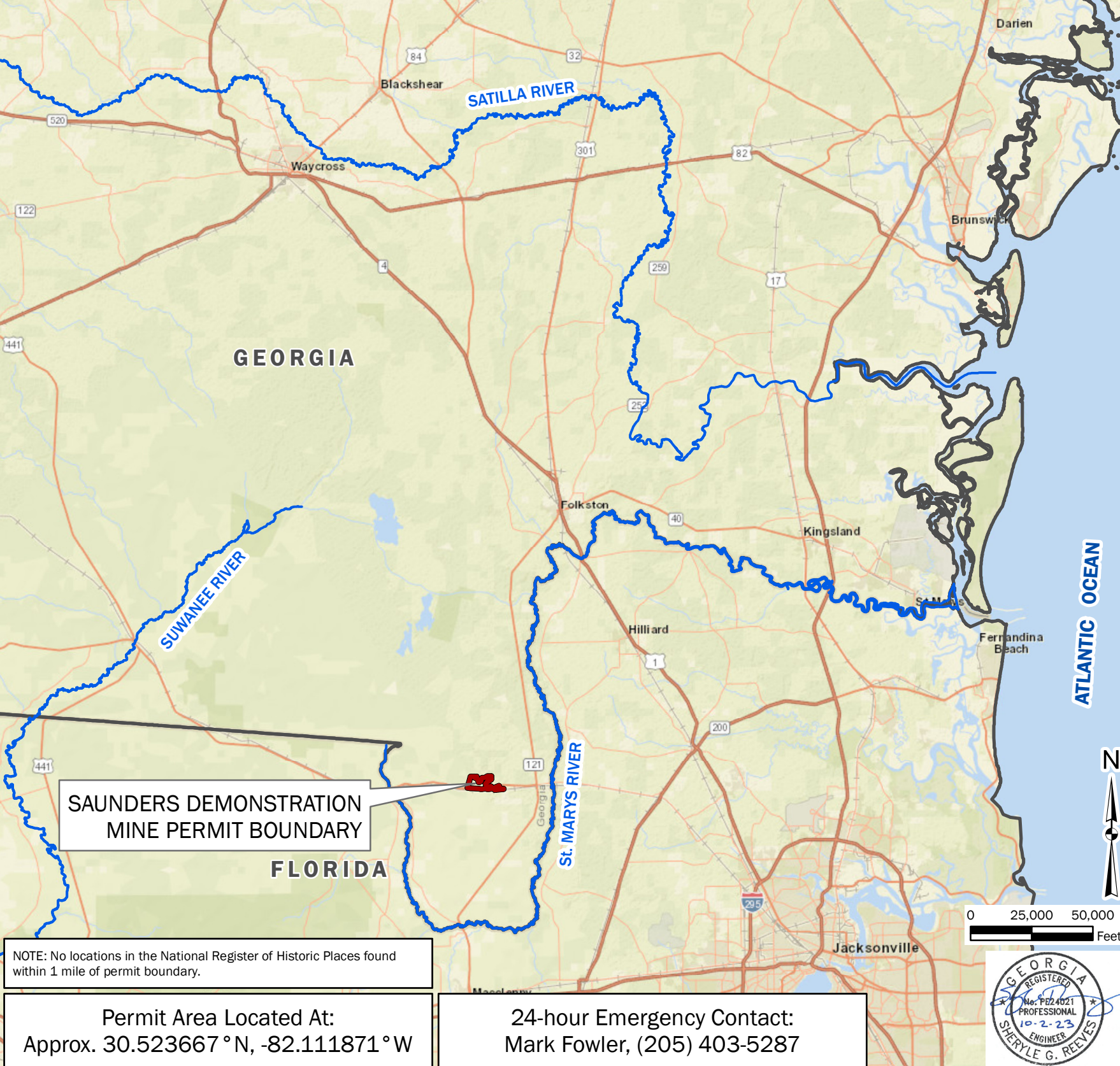


GEORGIA COUNTIES



Service Layer Credits: Sources: Esri, HERE, Garmin, USGS, Intermap, INCREMENT P, NRCan, Esri Japan, METI, Esri China (Hong Kong), Esri Korea, Esri (Thailand), NGCC, (c) OpenStreetMap contributors, and the GIS User Community



NOTE: No locations in the National Register of Historic Places found within 1 mile of permit boundary.

Permit Area Located At:
Approx. 30.523667 °N, -82.111871 °W

24-hour Emergency Contact:
Mark Fowler, (205) 403-5287



TABLE OF CONTENTS

Surface Mining Land Use Plan	
Sheet 1	Cover Sheet and Drawing Index
Sheet 2	Boundary Sheet
Sheet 3	Mining Plan Sheet — Site Layout
Sheet 4	Mining Plan Sheet — Estimated Progression of Mining
Sheet 5	Mining Plan Sheet — Process Flow Diagrams
Sheet 6	Erosion and Sediment Control Plan
Sheet 7	Erosion and Sediment Control Plan Notes & Details
Sheet 8	Temporary Vegetation Schedule Table
Sheet 9	Post-Mining Reclamation Plan (1)
Sheet 10	Post-Mining Reclamation Plan (2)
Sheet 11	Groundwater and Surface Water Monitoring Plan (1)
Sheet 12	Groundwater and Surface Water Monitoring Plan (2)
Sheet 13	Groundwater and Surface Water Monitoring Plan (3)
Sheet 14	Supplemental Information — Site Vicinity, FEMA Flood Hazard, Threatened & Endangered Species, and NRCS Hydric Soil Rating Maps
Sheet 15	Supplemental Narrative
Pond Sheets	
C-001	Cover Sheet
C-002	Drawing Index
C-100	Overall Existing Conditions Plan
C-102	Existing Conditions Plan Sheet 2
C-103	Existing Conditions Plan Sheet 3
C-105	Existing Conditions Plan Sheet 5
C-200	Overall Site Plan
C-202	Site Plan Sheet 2
C-203	Site Plan Sheet 3
C-205	Site Plan Sheet 5
C-300	Overall Grading and Drainage Plan
C-302	Grading and Drainage Plan Sheet 2
C-303	Grading and Drainage Plan Sheet 3
C-305	Grading and Drainage Plan Sheet 5
C-400	Overall Initial Erosion Sedimentation and Pollution Control Plan for Process Water and Water Management Ponds (1)
C-402	Initial Erosion Sedimentation and Pollution Control Plan Sheet for Process Water and Water Management Ponds (2)
C-403	Initial Erosion Sedimentation and Pollution Control Plan for Process Water and Water Management Ponds (3)
C-405	Initial Erosion Sedimentation and Pollution Control Plan for Process Water and Water Management Ponds (5)
C-410	Overall Intermediate Erosion Sedimentation and Pollution Control Plan for Water Management Ponds (1)
C-412	Intermediate Erosion Sedimentation and Pollution Control Plan for Process Water and Water Management Ponds (2)
C-413	Intermediate Erosion Sedimentation and Pollution Control Plan for Process Water and Water Management Ponds (3)
C-415	Intermediate Erosion Sedimentation and Pollution Control Plan for Process Water and Water Management Ponds (5)
C-420	Overall Final Erosion Sedimentation and Pollution Control Plan for Process Water and Water Management Ponds (1)
C-422	Final Erosion Sedimentation and Pollution Control Plan for Process Water and Water Management Ponds (2)
C-423	Final Erosion Sedimentation and Pollution Control Plan for Process Water and Water Management Ponds (3)
C-425	Final Erosion Sedimentation and Pollution Control Plan for Process Water and Water Management Ponds (5)
C-439	Erosion Sedimentation and Pollution Control Checklist for Process Water and Water Management Ponds
C-441	Erosion Sedimentation and Pollution Control Details for Process Water and Water Management Ponds (1)
C-442	Erosion Sedimentation and Pollution Control Details for Process Water and Water Management Ponds (2)
C-600	Overall Utility Plan
C-602	Utility Plan Sheet 2
C-603	Utility Plan Sheet 3
C-605	Utility Plan Sheet 5
C-611	Utility Details Sheet 1
C-612	Utility Details Sheet 2
C-613	Utility Details Sheet 3
C-614	Utility Details Sheet 4
C-615	Utility Details Sheet 5
C-621	Pump Station Plan and Section
C-630A	Updated Overall Evaporator Layout
C-632A	Updated Evaporator Plan Sheet 2
C-633A	Updated Evaporator Plan Sheet 3
C-635A	Updated Evaporator Plan Sheet 5
C-601	Perimeter Road Plan and Profile Sheet 1
C-602	Perimeter Road Plan and Profile Sheet 2
C-603	Perimeter Road Plan and Profile Sheet 3
C-604	Perimeter Road Plan and Profile Sheet 4
C-605	Perimeter Road Plan and Profile Sheet 5
C-606	Perimeter Road Plan and Profile Sheet 6
C-611	Pump House Road Plan and Profile Sheet 1
C-612	Pump House Road Plan and Profile Sheet 2
C-621	Storm Drain Plan and Profile
C-631	Site Cross Sections Sheet 1
C-632	Site Cross Sections Sheet 2
C-633	Site Cross Sections Sheet 3
C-701	Liner Details
C-711	Site Details 1
C-712	Site Details 2
C-713	Site Details 3
C-714	Site Details 4
C-801	Pond Closure Plan
Appendices	
Jurisdictional Determinations and Resource Surveys	
Appendix A	USACE Approved Jurisdictional Determinations (Oct., 15 2020; Mar. 14, 2021)
Appendix B	Cultural Resources Reports (Apr. 2020)
Appendix C	Species Surveys and Habitat Assessments (2018-2020)
Investigations	
Appendix D	Holt, R.M., Tanner, J.M., Smith, J.R., Patton, A.C. and Lepchitz, Z. B. (Dec. 11, 2019). <i>Subsurface Lithology of the Surficial Aquifer at Twin Pines Mine.</i>
Appendix E	Holt, R.M., Tanner, J.M., Smith, J.R., Patton, A.C. and Lepchitz, Z. B. (Oct. 31, 2019). <i>Geologic Characterization at Twin Pines Mine.</i>
Appendix F	Holt, R.M., Tanner, J.M., Smith, J.R., Patton, A.C. and Lepchitz, Z. B. (Oct. 31, 2019). <i>Hydrogeologic Field Characterization at Twin Pines Mine.</i>
Appendix G	Holt, R.M. (Jan. 25, 2021). <i>Subsurface Continuity of Humate-Bearing Sands in Surficial Aquifer, Trail Ridge, Georgia.</i>
Appendix H	Holt, R.M., Tanner, J.M., Smith, J.R., Patton, A.C. and Lepchitz, Z. B. (Oct. 31, 2019). <i>Water Quality at Twin Pines Mine.</i>
Appendix I	Holt, R.M., Tanner, J.M., Smith, J.R., Patton, A.C. and Lepchitz, Z. B. (Nov. 22, 2019). <i>Local Groundwater/Surface Water Hydrology at Twin Pines Mine.</i>
Appendix J	Holt, R.M., Tanner, J.M., Smith, J.R., Patton, A.C. and Lepchitz, Z. B. (Nov. 15, 2019). <i>Climate Data at Twin Pines Mine.</i>
Appendix K	Holt, R.M., Tanner, J.M., Smith, J.R., Patton, A.C. and Lepchitz, Z. B. (Nov. 26, 2019). <i>Laboratory Testing Data at Twin Pines Mine.</i>
Modeling Reports and Analysis	
Appendix L	Holt, R.M., Tanner, J.M., Smith, J.R., Patton, A.C. and Lepchitz, Z. B. (Jan. 14, 2020). <i>Impact of the Proposed Twin Pines Mine on the Trail Ridge Hydrologic System.</i>
Appendix M	Holt, R.M., Tanner, J.M., and Smith, J.R. (Nov. 13, 2020). <i>Assessing the Impact of Soil Amendments During the Reclamation of the Proposed Twin Pines Mine.</i>
Appendix N	Panday, S., Wyooff, R. and Martell, G. (Sep. 14, 2021). <i>GSI Environmental, Modeling the Groundwater Flow System at the Proposed Twin Pines Mine on Trail Ridge.</i>
Appendix O	Panday, S. (Nov. 9, 2022). <i>Addendum to Modeling the Groundwater Flow System at the Proposed Twin Pines Mine on Trail Ridge.</i>
Water Management	
Appendix P	Water Use Management Plan (Updated Oct. 2, 2023)
Appendix Q	Water Management Pond Hydrology and Hydraulic Analysis (May 2022)
1. Water Management Pond Plan	
2. Pond Analysis Output Report for the 25-yr / 24-hr Event	
3. Output Graph for the 25-yr / 24-hr Event	
4. Pond Analysis Output Report for the 100-yr/24-hr Event	
5. Output Graph for the 100-yr / 24-hr Event	
6. Precipitation Frequency Data from NOAA	
Appendix R	Rationale for Groundwater-Level Monitoring Plan
Appendix S	Technical Specifications
Appendix T	Burdick, K.E., Donald Smith Company, Inc., (Dec. 16, 2019). <i>Well Proposal.</i>
New Materials Submitted in Response to Comments	
Appendix U1	EcoVap Evaporation Systems Brochure (Undated)
Appendix U2	GSI Water Management Pond Evaporation Analysis (Oct. 2, 2023)
Appendix V	Safe Dams Inspection List & Recommended Pond Monitoring/Maintenance Schedule
Appendix W	GSI Response to Public Comments Regarding the Proposed Twin Pines Mining Project, Charlton County, Georgia (Oct. 2, 2023)
Appendix X	Jacobs Twin Pines Minerals, LLC Saunders Demonstration Mine Monitoring Plan Recommendations (Final Sept. 29, 2023)
Appendix Y	Jacobs Twin Pines Saunders Demonstration Mine Analysis of Night Lighting (Sept. 28, 2023)
Appendix Z	Jacobs Twin Pines Saunders Demonstration Mine Noise Analysis



Certificate of Authorization No.: PEF004125
3516 Greensboro Ave., Tuscaloosa, AL 35401

SHEET 1: COVER SHEET - SAUNDERS DEMONSTRATION MINE

TWIN PINES MINERALS, LLC SAUNDERS DEMONSTRATION MINE (ID NO. 2073)

ST. GEORGE, CHARLTON COUNTY, GEORGIA

BASEMAP: ESRI World Street Map (See Service Layer Credits).

DRAWN BY: DEK
CHECKED BY: SGR
DRAWING DATE: 11/13/2020
REVISION DATE: 10/2/2023
TTL JOB NO.: 18-02-00804.00
APPROX. SCALE: 1 in = 25,000 ft