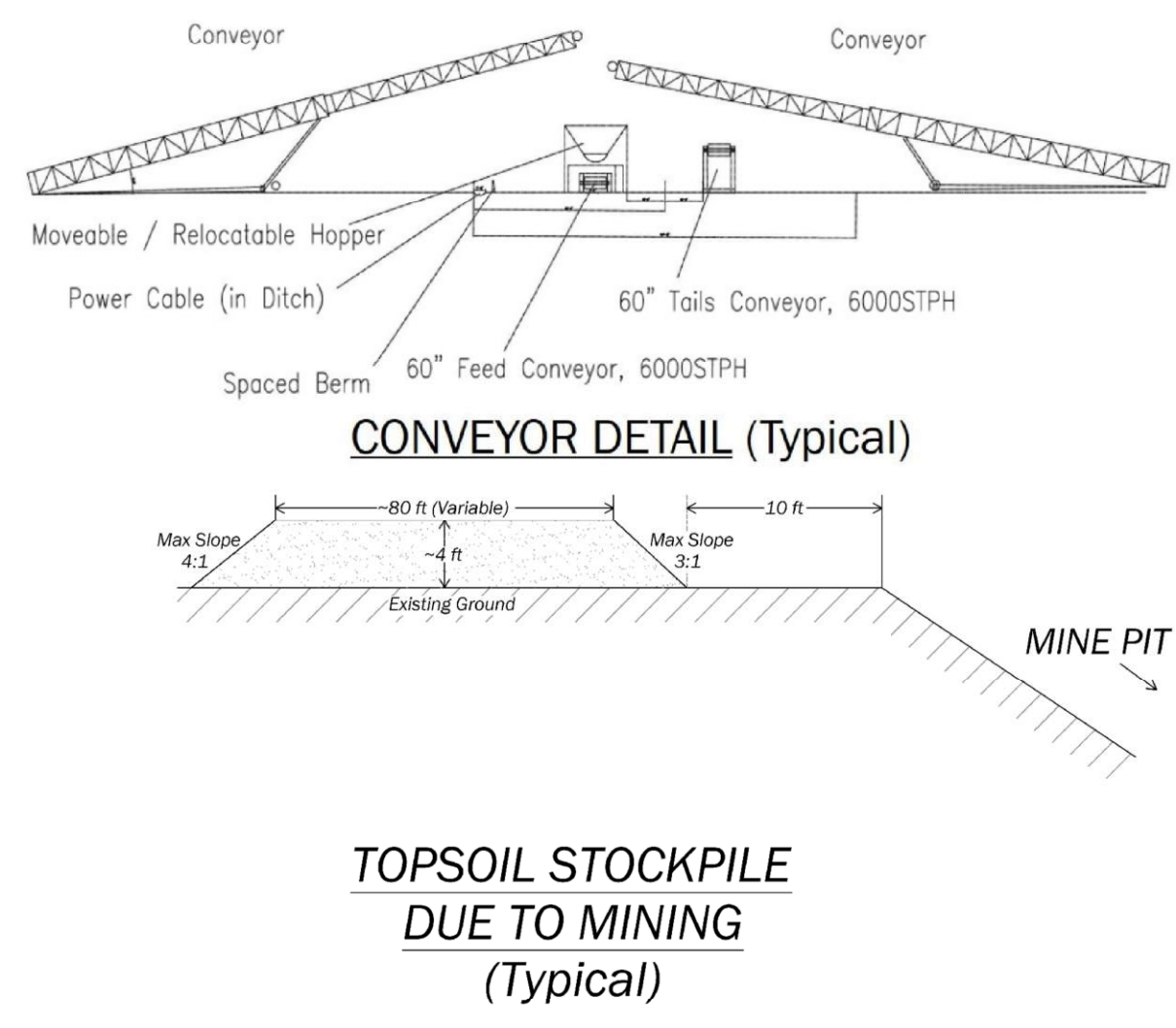
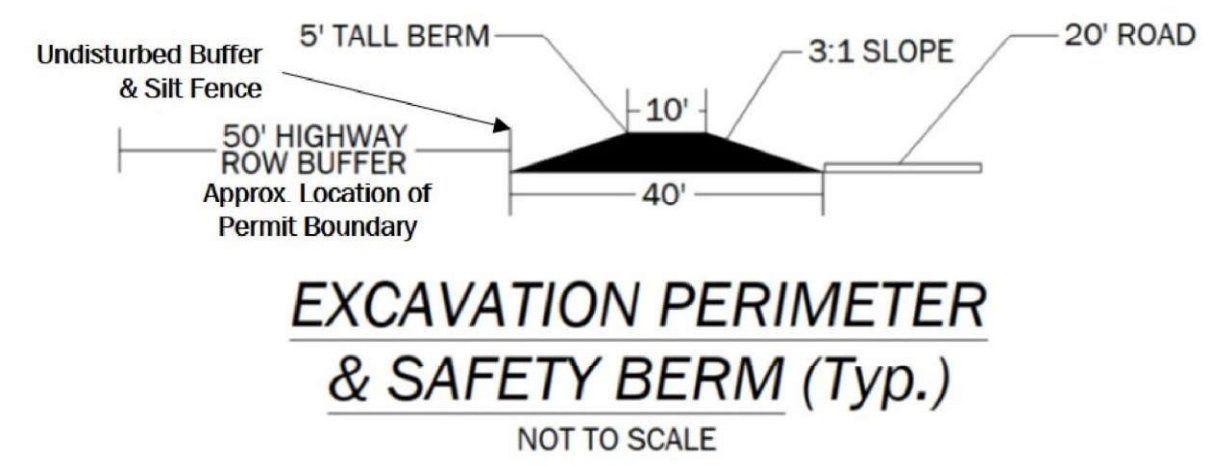
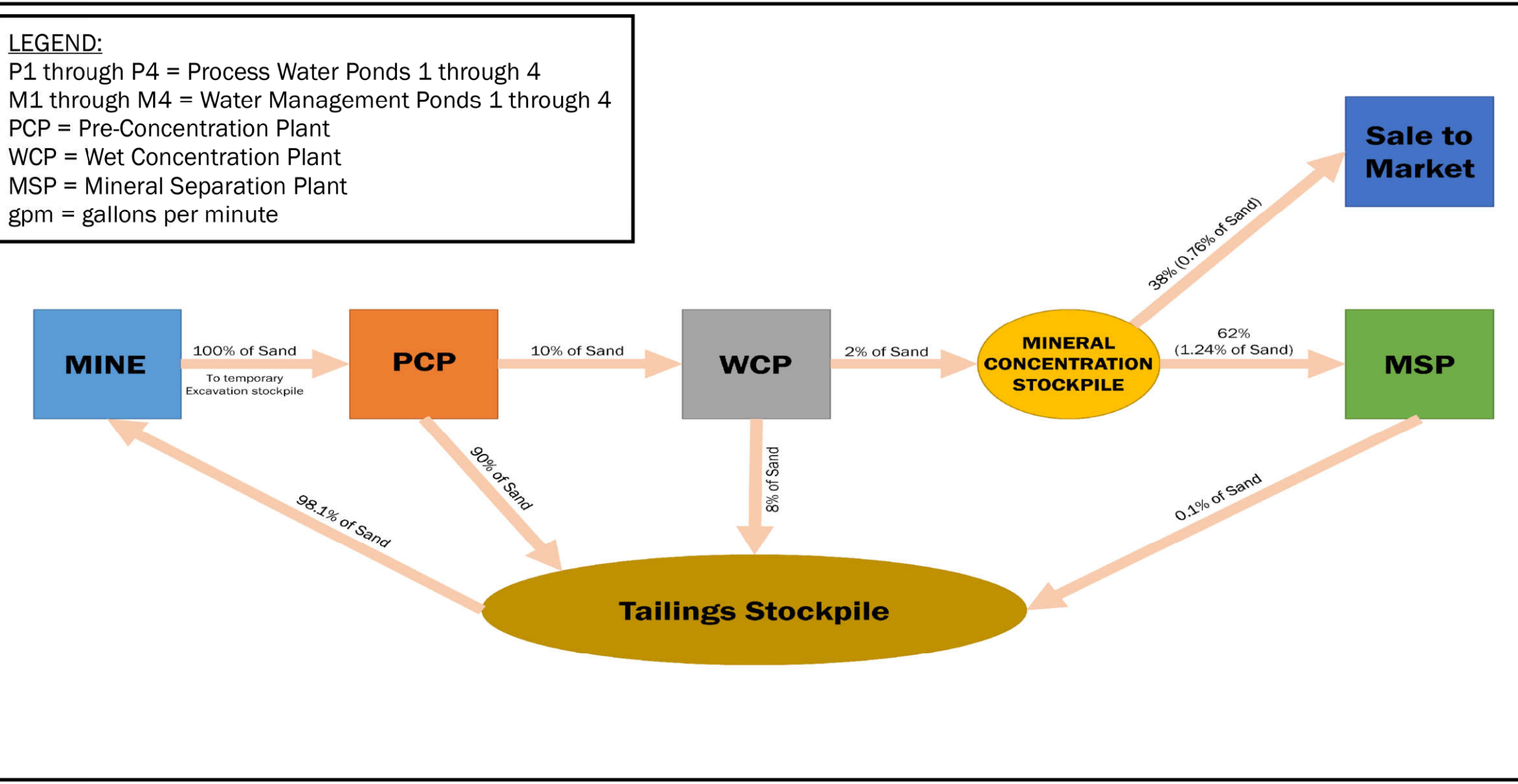


	Max Allowable
Mine Pit Sidewall Slope	34°
Mine Pit Depth	50 ft
Topsoil Stockpile Slope (Mine Pit Side)	3:1
Topsoil Stockpile Slope (Upgradient Side)	4:1
Topsoil Stockpile Height	Variable

NOTES

- Dragline will advance approximately 100 to 200 feet per day; backfilling will occur approximately 500 feet (5 to 7 days) behind the dragline as it advances.
- Refer to Sheet 15 for a detailed explanation of the mining process.

LEGEND:
 P1 through P4 = Process Water Ponds 1 through 4
 M1 through M4 = Water Management Ponds 1 through 4
 PCP = Pre-Concentration Plant
 WCP = Wet Concentration Plant
 MSP = Mineral Separation Plant
 gpm = gallons per minute

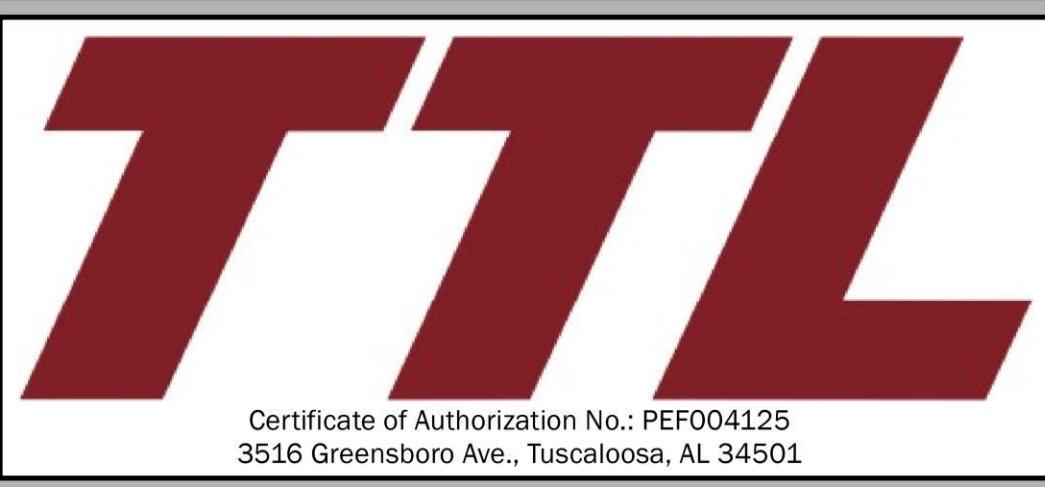
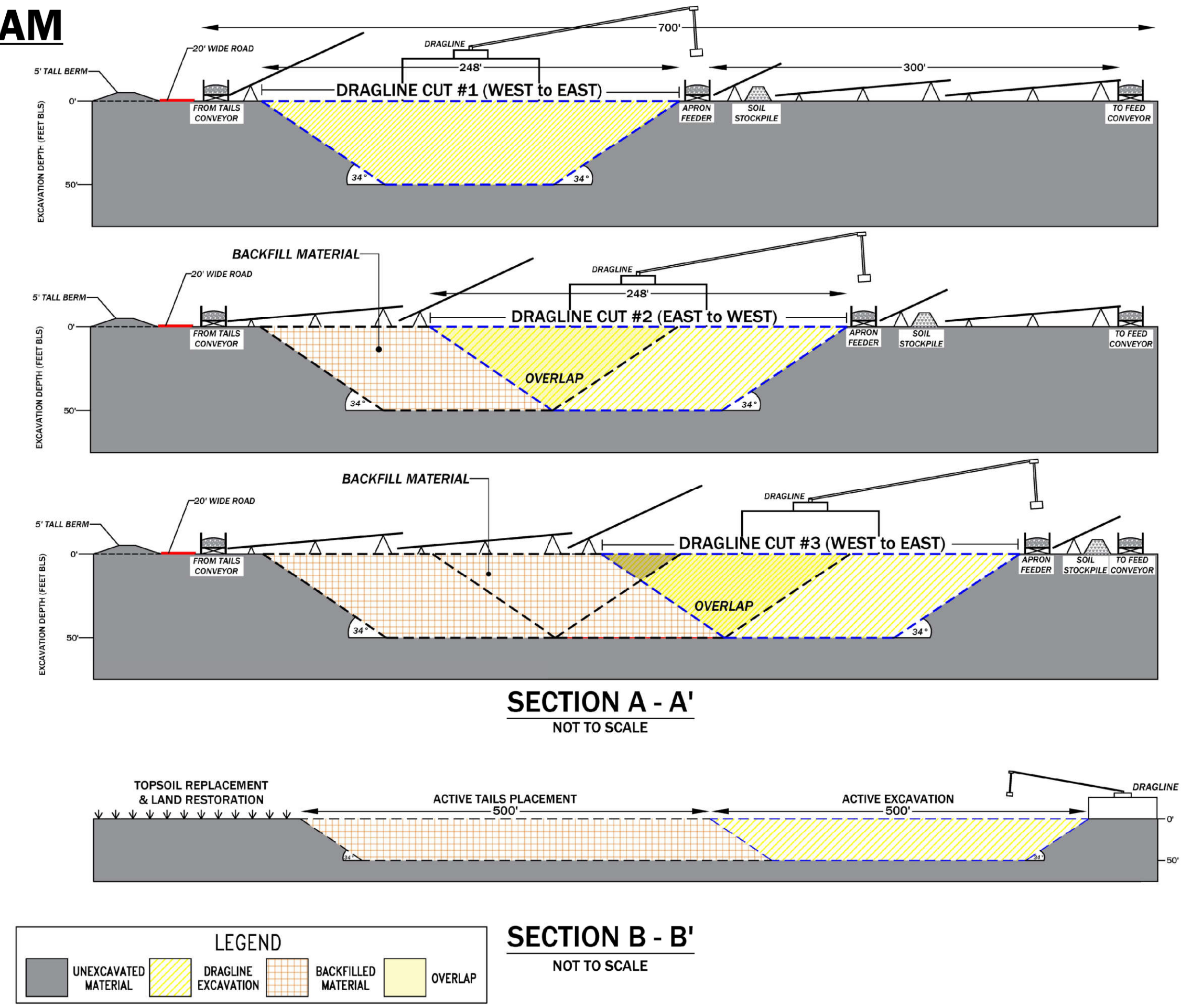
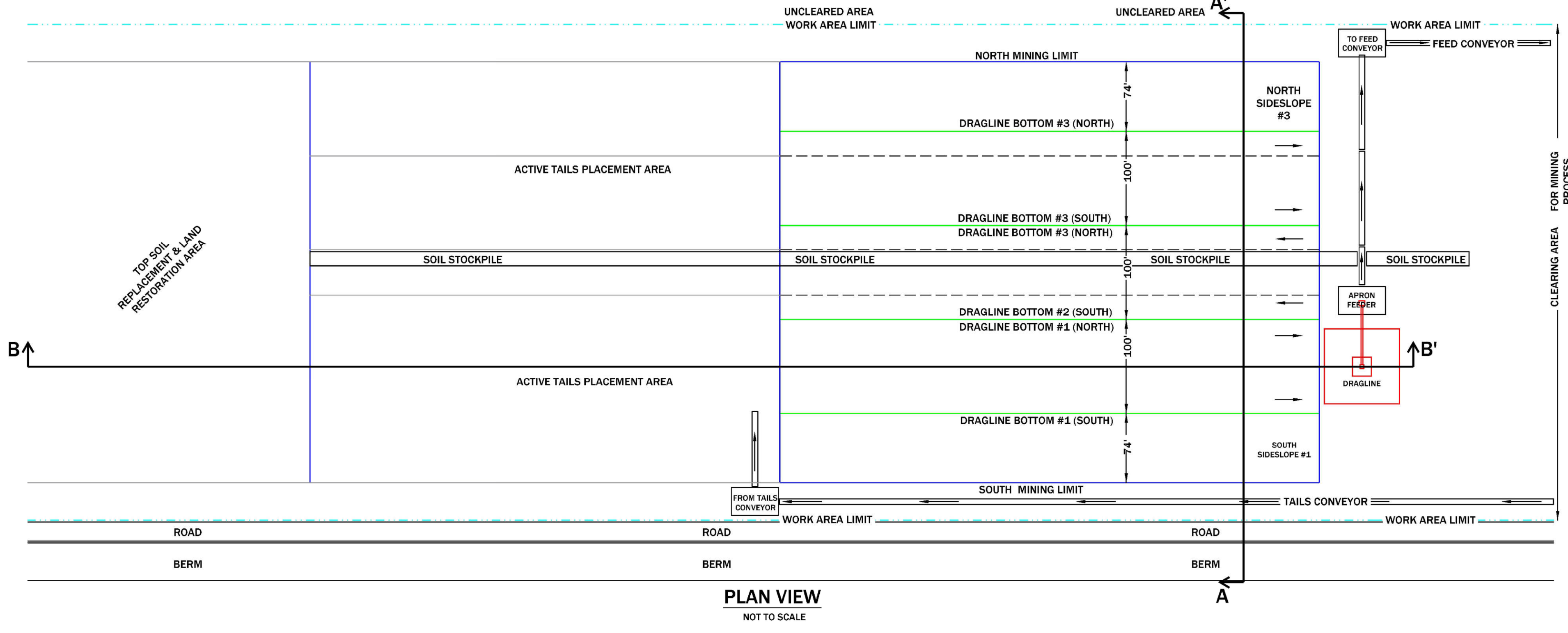


NOTES:

1. All material shall be hauled, utilizing trucks between the Wet Processing Plant and Mineral Separation Plant south of Highway 94.
2. Water required at the Mineral Separation Plant will be hauled, utilizing tanker trucks, from Water Management Pond M3. Any wastewater from the Mineral Separation Plant will be hauled, by tanked trucks, to the Process Water Ponds for re-use.

MINING SAND PROCESS FLOW DIAGRAM

MINING WATER PROCESS FLOW DIAGRAM



SHEET 5: MINING PLAN SHEET - PROCESS FLOW DIAGRAM, DETAILS & TYPICAL PROFILE/CROSS-SECTION
 TWIN PINES MINERALS, LLC SAUNDERS DEMONSTRATION MINE (ID NO. 2073)
 ST. GEORGE, CHARLTON COUNTY, GEORGIA



DRAWN BY: DEK
CHECKED BY: SGR
DRAWING DATE: 11/13/2020
REVISION DATE: 10/2/2023
TTL JOB NO.: 18-02-00804.00
APPROX. SCALE: N.T.S.