

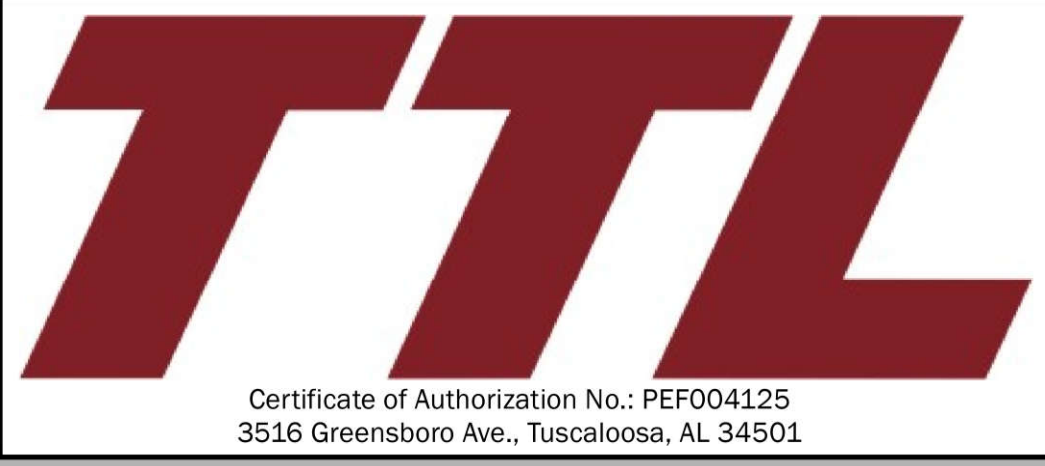
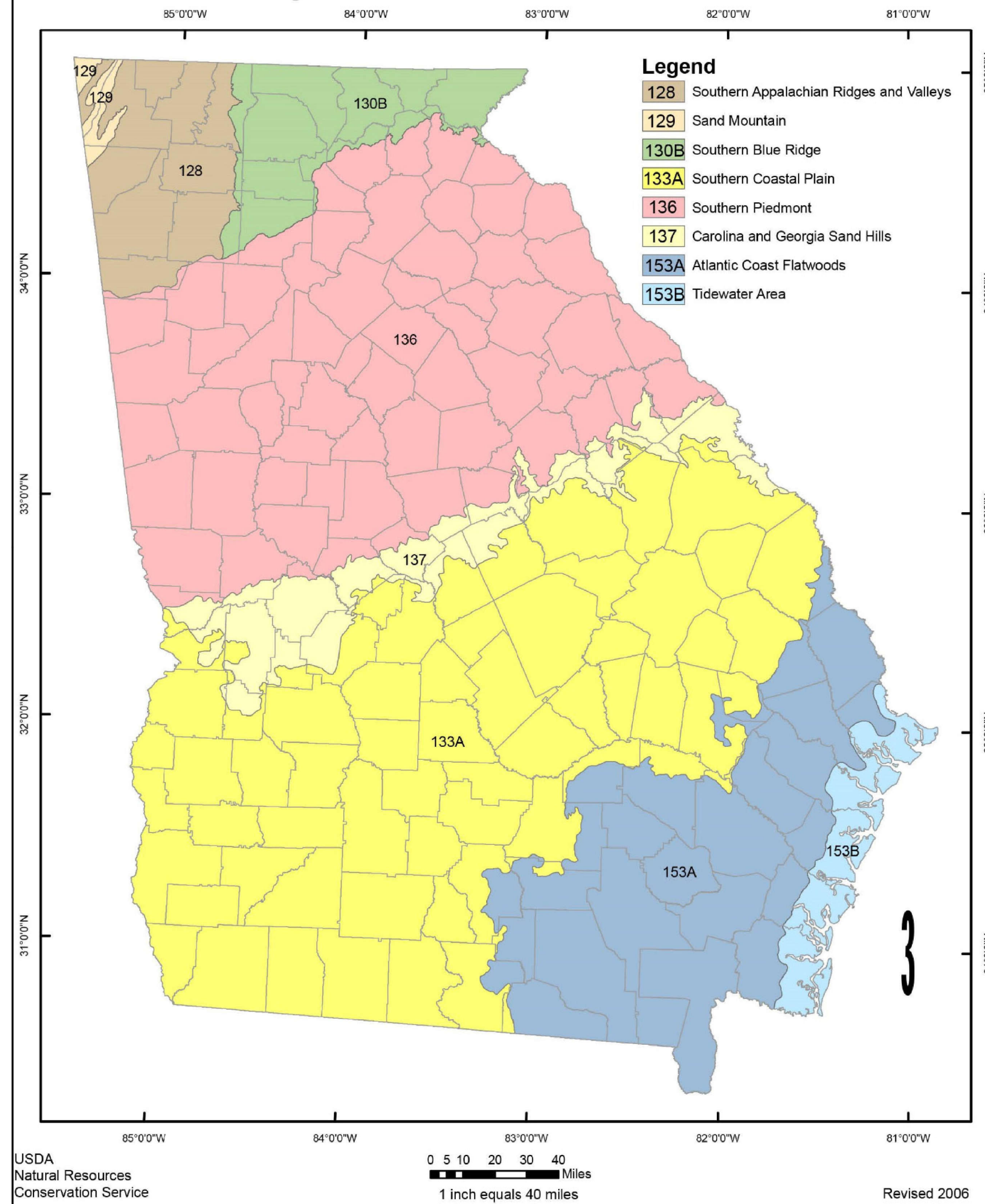
**TABLE 6-4.1: Temporary Cover or Companion Crops
Plant, Planting Rate and Planting
(Manual for Sediment and Erosion Control, Georgia 2016)**

Species	Broadcast Rates		Resource Area ³	Planting Dates by Resource Area												Remarks
	Rate Per Acre ²	Pure Live Seed (PLS) Per 1000 sqft		Solid lines indicate optimum dates, dotted lines indicate permissible but marginal dates.												
				J	F	M	A	M	J	J	A	S	O	N	D	
BARLEY <i>Hordeum vulgare</i>																
alone	3 bu. (144 lbs)	3.3 lbs	M-L													
in mixture	1/2 bu. (24lbs)	0.6 lb	P C													14,000 seed per pound. Winter hardy. Use on productive soils.
LESPEDEZA, ANNUAL <i>Lespedeza striata</i>																
alone	40 lbs	0.9 lb	M-L													
in mixture	10 lbs	0.2 lb	P C													200,000 seed per pound. May volunteer for several years. Use inoculant EL.
LOVEGRASS, WEEPING <i>Eragrostis curvula</i>																
alone	4 lbs	0.1 lb	M-L													
in mixture	2 lbs	0.05 lb	P C													1,500,000 seed per pound. May last for several years. Mix with <i>Sericea lespedeza</i> .
MILLET, BROWNTOP <i>Panicum fasciculatum</i>																
alone	40 lbs	0.9 lb	M-L													
in mixture	10 lbs	0.2 lb	P C													137,000 seed per pound. Quick dense cover. Will provide excessive competition in mixtures if seeded at high rate.
MILLET, PEARL <i>Pennisetum glaucum</i>																
alone	50 lbs	1.1 lbs	M-L P C													88,000 seed per pound. Quick dense cover. May reach 5 feet in height. Not recommended for mixtures.
OATS <i>Avena sativa</i>																
alone	4 bu. (128 lbs)	2.9 lbs	M-L													
in mixture	1 bu. (32 lbs)	0.7 lb	P C													13,000 seed per pound. Use on productive soils. Not as a winter hardy as rye or barley.
RYE <i>Secale cereale</i>																
alone	3 bu. (168 lbs)	3.9 lbs	M-L													
in mixture	1/2 bu. (28 lbs)	0.6 lb	P C													18,000 seed per pound. Quick cover. Drought tolerant and winter hardy.
RYEGRASS, ANNUAL <i>Lolium temulentum</i>																
alone	40 lbs	0.9 lb	M-L P C													227,000 seed per pound. Dense cover. Very competitive and is <u>not</u> to be used in mixtures.
SUDANGRASS <i>Sorghum sudanese</i>																
alone	60 lbs	1.4 lbs	M-L P C													55,000 seed per pound. Good on droughty sites. Not recommended for mixtures.
TRITICALE <i>X-Triticosecale</i>																
alone	3 bu. (144 lbs)	3.3 lbs	C													
in mixture	1/2 bu. (24 lbs)	0.6 lb														Use on lower part of Southern Coastal Plain and in Atlantic Coastal Flatwoods only.
WHEAT <i>Triticum aestivum</i>																
alone	3 bu. (180 lbs)	4.1 lbs	M-L													
in mixture	1/2 bu. (30 lbs)	0.7 lb	P C													15,000 seed per pound. Winter hardy.

¹Temporary cover crops are very competitive and will crowd out perennials if seeded too heavily
²Reduce seeding rates by 50% when drilled.
³M-L represents the Mountain, Blue Ridge, and Ridges and Valleys MLRAs
P represents the Southern Piedmont MLRA
C represents Southern Coastal Plain; Sand Hills; Black Lands; and Atlantic Coast Flatwoods MLRAs

GEORGIA

Major Land Resource Areas



SHEET 8: TEMPORARY VEGETATION SCHEDULE TABLE

TWIN PINES MINERALS, LLC SAUNDERS DEMONSTRATION MINE (ID NO. 2073)
ST. GEORGE, CHARLTON COUNTY, GEORGIA



DRAWN BY: DEK
CHECKED BY: SGR
DRAWING DATE: 11/19/2021
REVISION DATE: 10/2/2023
TTL JOB NO.: 18-02-00804.00
APPROX. SCALE: N.T.S.