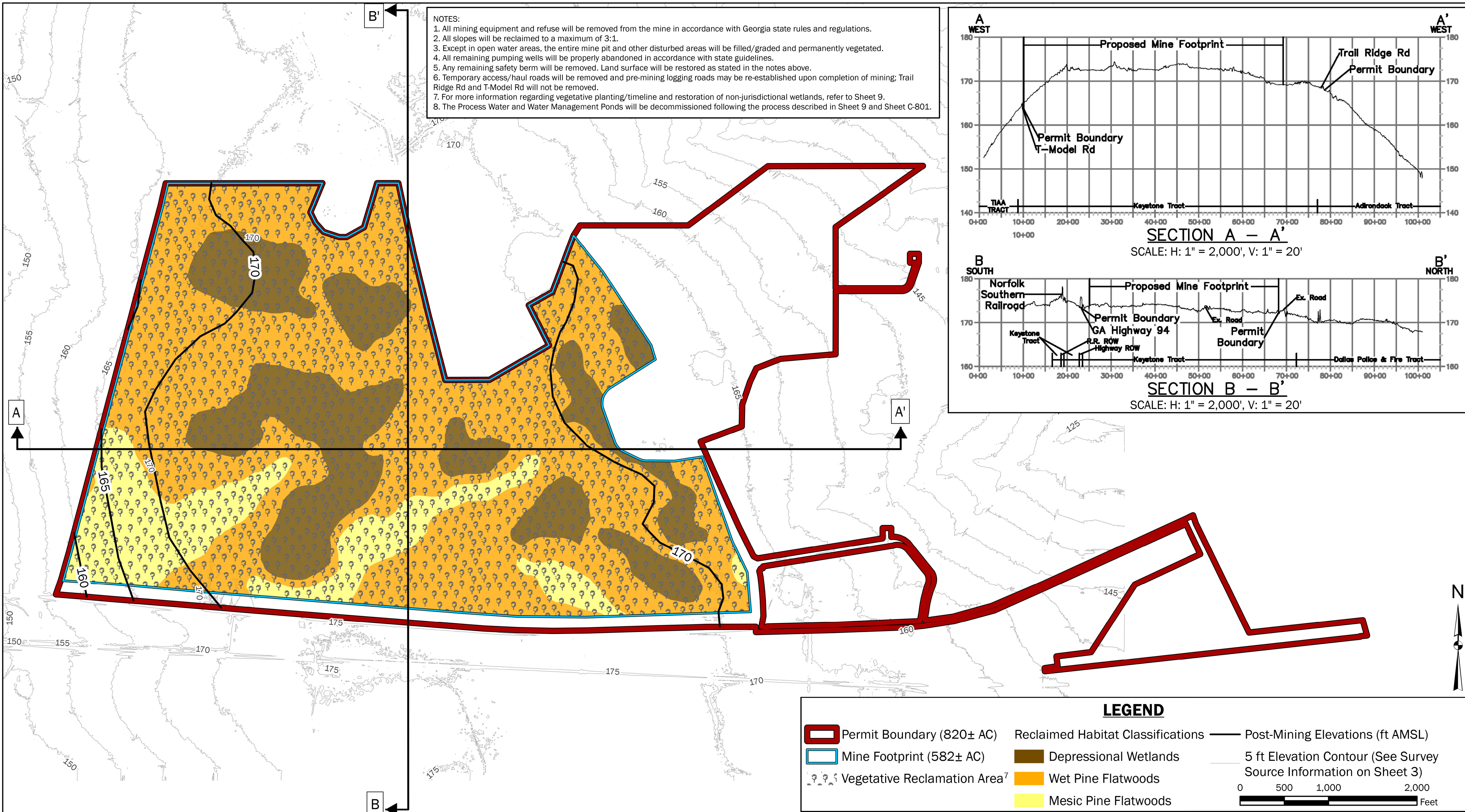
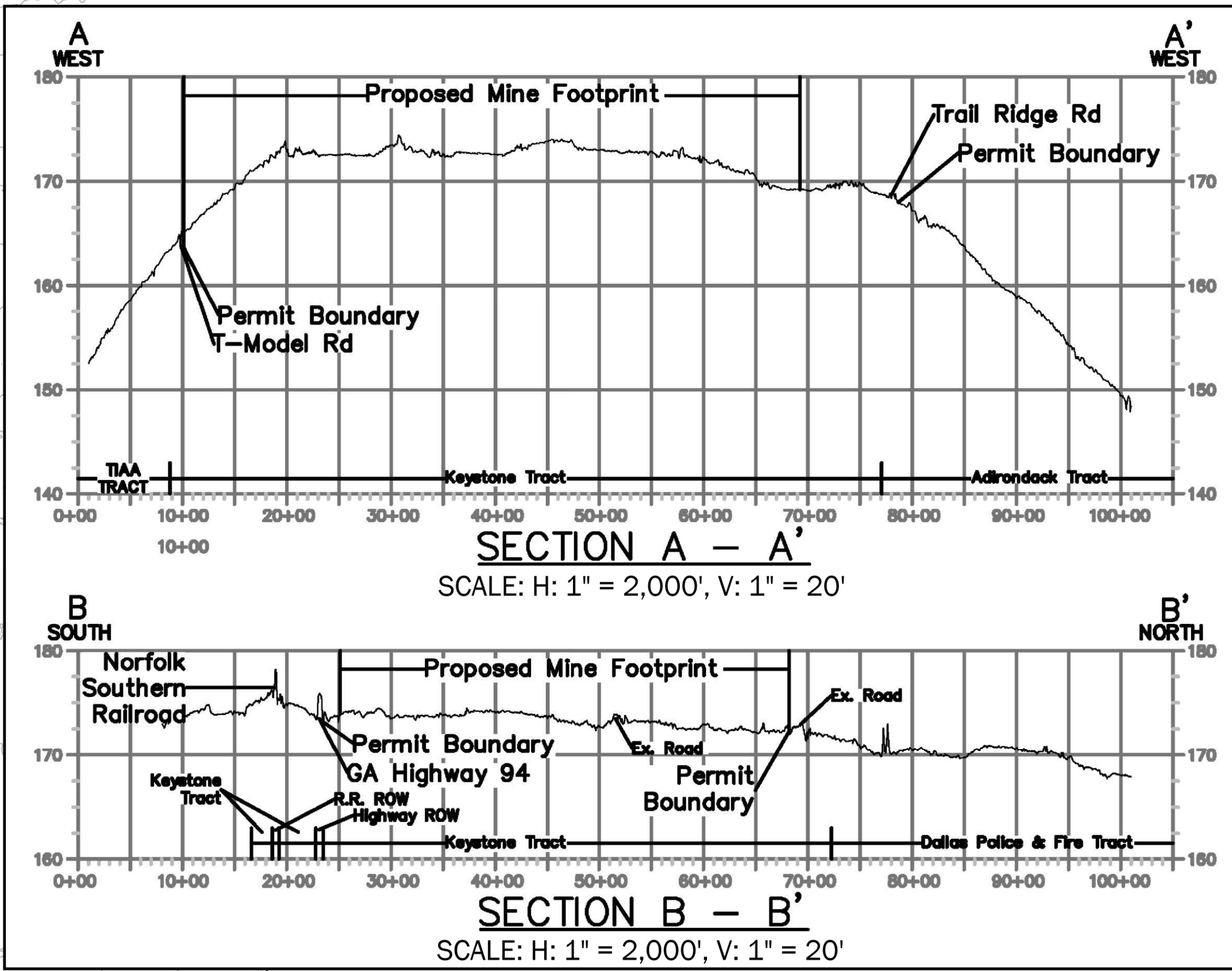
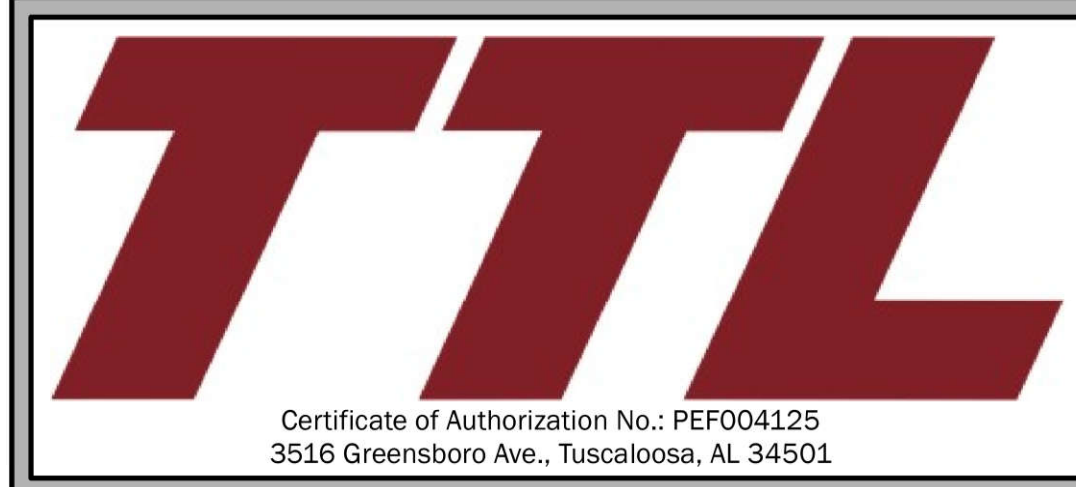


- NOTES:
1. All mining equipment and refuse will be removed from the mine in accordance with Georgia state rules and regulations.
 2. All slopes will be reclaimed to a maximum of 3:1.
 3. Except in open water areas, the entire mine pit and other disturbed areas will be filled/graded and permanently vegetated.
 4. All remaining pumping wells will be properly abandoned in accordance with state guidelines.
 5. Any remaining safety berm will be removed. Land surface will be restored as stated in the notes above.
 6. Temporary access/haul roads will be removed and pre-mining logging roads may be re-established upon completion of mining; Trail Ridge Rd and T-Model Rd will not be removed.
 7. For more information regarding vegetative planting/timeline and restoration of non-jurisdictional wetlands, refer to Sheet 9.
 8. The Process Water and Water Management Ponds will be decommissioned following the process described in Sheet 9 and Sheet C-801.



LEGEND

Permit Boundary (820± AC)	Reclaimed Habitat Classifications	Post-Mining Elevations (ft AMSL)
Mine Footprint (582± AC)	Depressional Wetlands	5 ft Elevation Contour (See Survey Source Information on Sheet 3)
Vegetative Reclamation Area ⁷	Wet Pine Flatwoods	0 500 1,000 2,000 Feet
Mesic Pine Flatwoods		



SHEET 10: POST-MINING RECLAMATION PLAN (2)
 TWIN PINES MINERALS, LLC SAUNDERS DEMONSTRATION MINE (ID NO. 2073)
 ST. GEORGE, CHARLTON COUNTY, GEORGIA



DRAWN BY: DEK
CHECKED BY: SGR
DRAWING DATE: 11/13/2020
REVISION DATE: 10/2/2023
TTL JOB NO.: 18-02-00804.00
APPROX. SCALE: 1 in = 500 ft