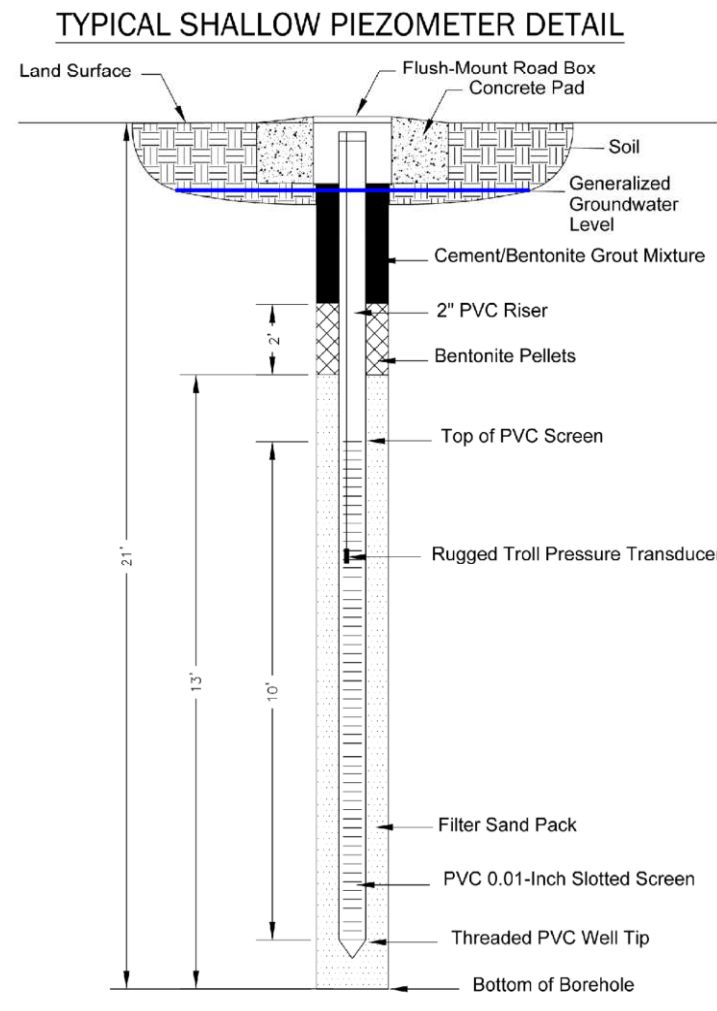
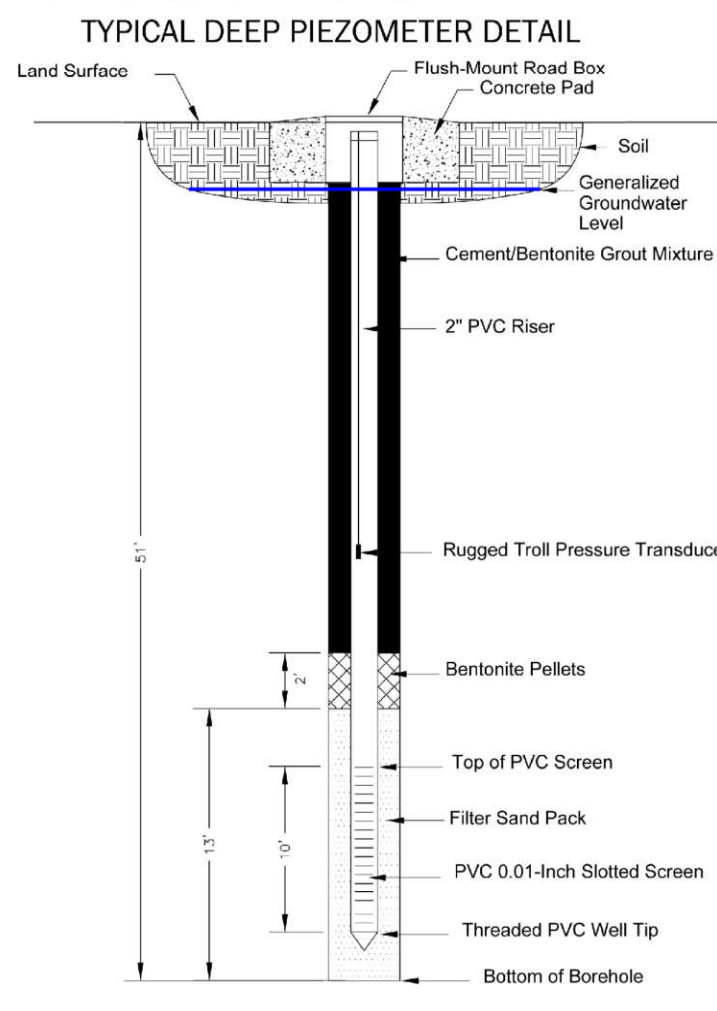


GROUNDWATER MONITORING TABLE					
ID	ELEVATION	QUALITY	ID	ELEVATION	QUALITY
PZ01S	X		PZ56D	X	
PZ01D	X		PZ57S	X	
PZ02	X		PZ57D	X	
PZ03S	X		PZ58S	X	
PZ03D	X		PZ58D	X	
PZ04	X		OWB1BS	X	
PZ05	X		OWB1S	X	
PZ06	X		OWB1D	X	
PZ07	X		MPZ-01S	X	X
PZ08	X		MPZ-01I	X	X
PZ09	X		MPZ-01D	X	X
PZ10	X		MPZ-01BM	X	X
PZ11	X		MPZ-02S	X	X
PZ12S	X		MPZ-02I	X	X
PZ12D	X		MPZ-02D	X	X
PZ13	X		MPZ-03S	X	X
PZ14	X		MPZ-03I	X	X
PZ15	X		MPZ-03D	X	X
PZ16S	X		MPZ-04S	X	X
PZ16D	X		MPZ-04I	X	X
PZ17S	X		MPZ-04D	X	X
PZ17D	X		MPZ-05S	X	X
PZ18	X		MPZ-05I	X	X
PZ19	X		MPZ-05D	X	X
PZ20S	X		MPZ-05BM	X	X
PZ20D	X		MPZ-06S	X	X
PZ21	X		MPZ-06I	X	X
PZ22S	X		MPZ-06D	X	X
PZ22D	X		MPZ-07	X	
PZ23	X		MPZ-08	X	
PZ24	X		MPZ-09	X	
PZ25S	X		MPZ-10S	X	X
PZ25D	X		MPZ-10I	X	X
PZ26	X		MPZ-10D	X	X
PZ27S	X		MPZ-10BM	X	X
PZ27D	X		MPZ-11	X	
PZ28S	X		MPZ-12	X	
PZ28D	X		MPZ-13S	X	X
PZ38	X		MPZ-13I	X	X
PZ39S	X		MPZ-13D	X	X
PZ39D	X		MPZ-13BM	X	X
PZ40	X		MPZ-14S	X	X
PZ41	X		MPZ-14I	X	X
PZ42	X		MPZ-14D	X	X
PZ43	X		MPZ-15	X	
PZ44	X		MPZ-16S	X	X
PZ45S	X		MPZ-16I	X	X
PZ45D	X		MPZ-16D	X	X
PZ46	X		MPZ-16BM	X	X
PZ47	X		MPZ-17S	X	X
PZ48S	X		MPZ-17I	X	X
PZ48D	X		MPZ-17D	X	X
PZ49	X		MPZ-17BM	X	X
PZ50	X		MPZ-18S	X	X
PZ51S	X		MPZ-18I	X	X
PZ51D	X		MPZ-18D	X	X
PZ52	X		MPZ-19S	X	X
PZ53	X		MPZ-19I	X	X
PZ55S	X		MPZ-19D	X	X
PZ55D	X				
PZ56S	X				

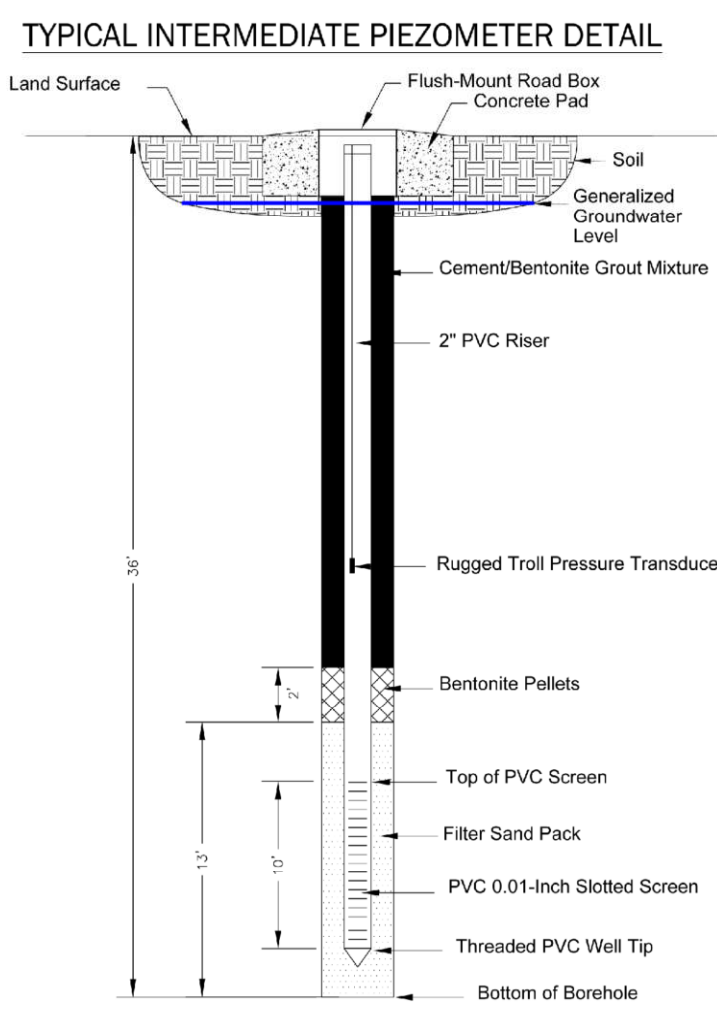
Note: Thirteen piezometers (MPZ-01S, MPZ-02S, MPZ-03S, MPZ-04S, MPZ-05S, MPZ-06S, MPZ-10S, MPZ-13S, MPZ-14S, MPZ-16S, MPZ-17S, MPZ-18S, and MPZ-19S) will be installed to depths of about 20 feet bgs. The screened interval will be from 10 to 20 feet bgs. These wells will only be used for water quality and water level monitoring.



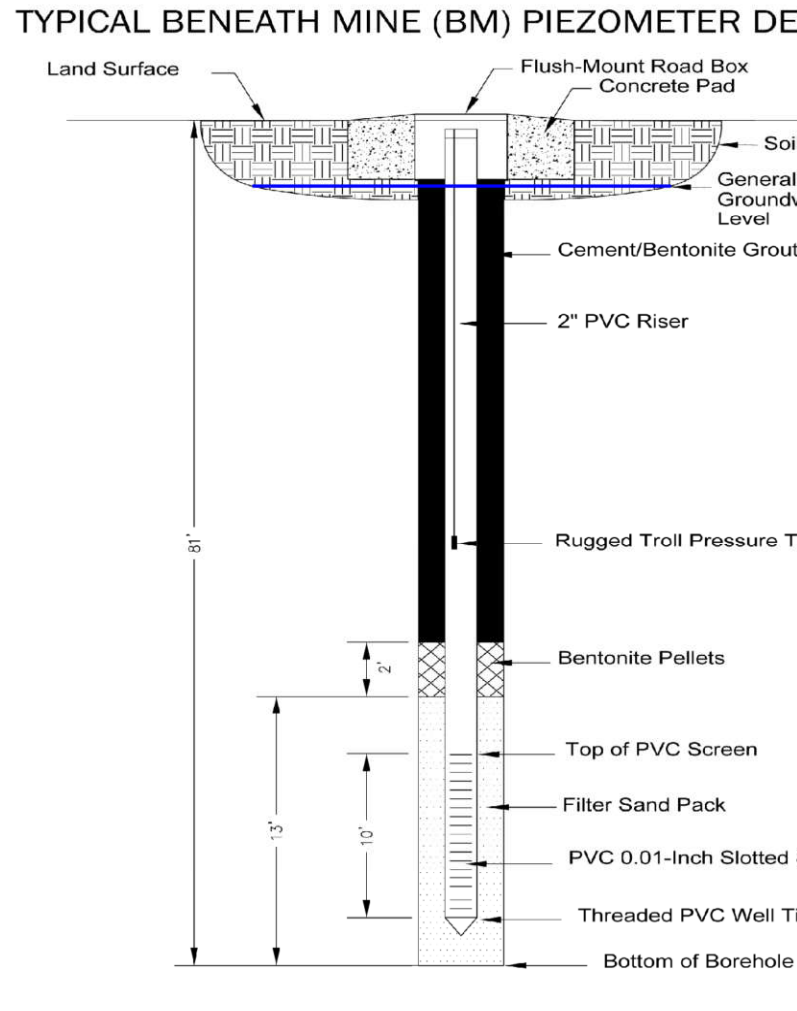
Note: Thirteen piezometers (MPZ-01D, MPZ-02D, MPZ-03D, MPZ-04D, MPZ-05D, MPZ-06D, MPZ-10D, MPZ-13D, MPZ-14D, MPZ-16D, MPZ-17D, MPZ-18D, and MPZ-19D) will be installed to depths of about 50 feet bgs. The screened interval will be from 40 to 50 feet bgs. These wells will only be used for water quality and water level monitoring.



Note: Thirteen piezometers (MPZ-01I, MPZ-02I, MPZ-03I, MPZ-04I, MPZ-05I, MPZ-06I, MPZ-10I, MPZ-13I, MPZ-14I, MPZ-16I, MPZ-17I, MPZ-18I, and MPZ-19I) will be installed to depths of about 35 feet bgs. The screened interval will be from 25 to 35 feet bgs. These wells will only be used for water quality and water level monitoring.

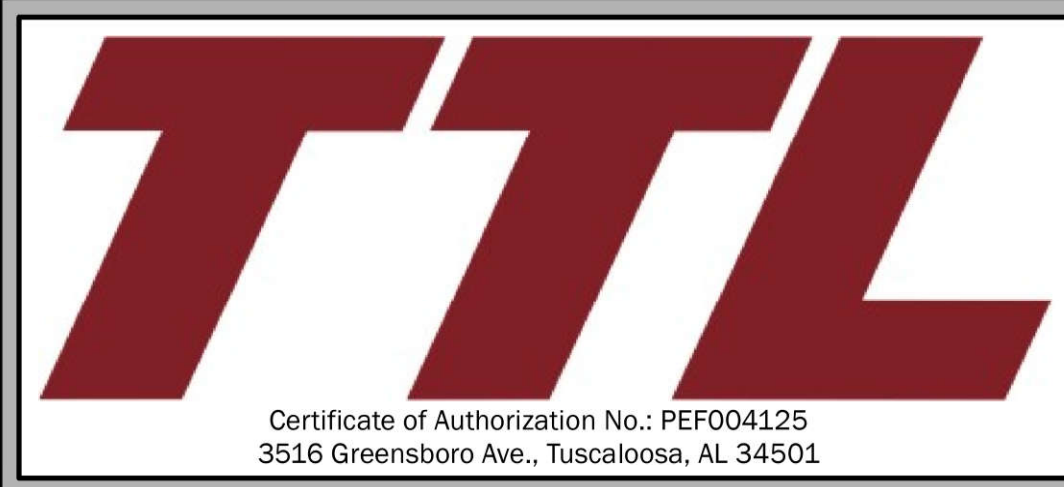
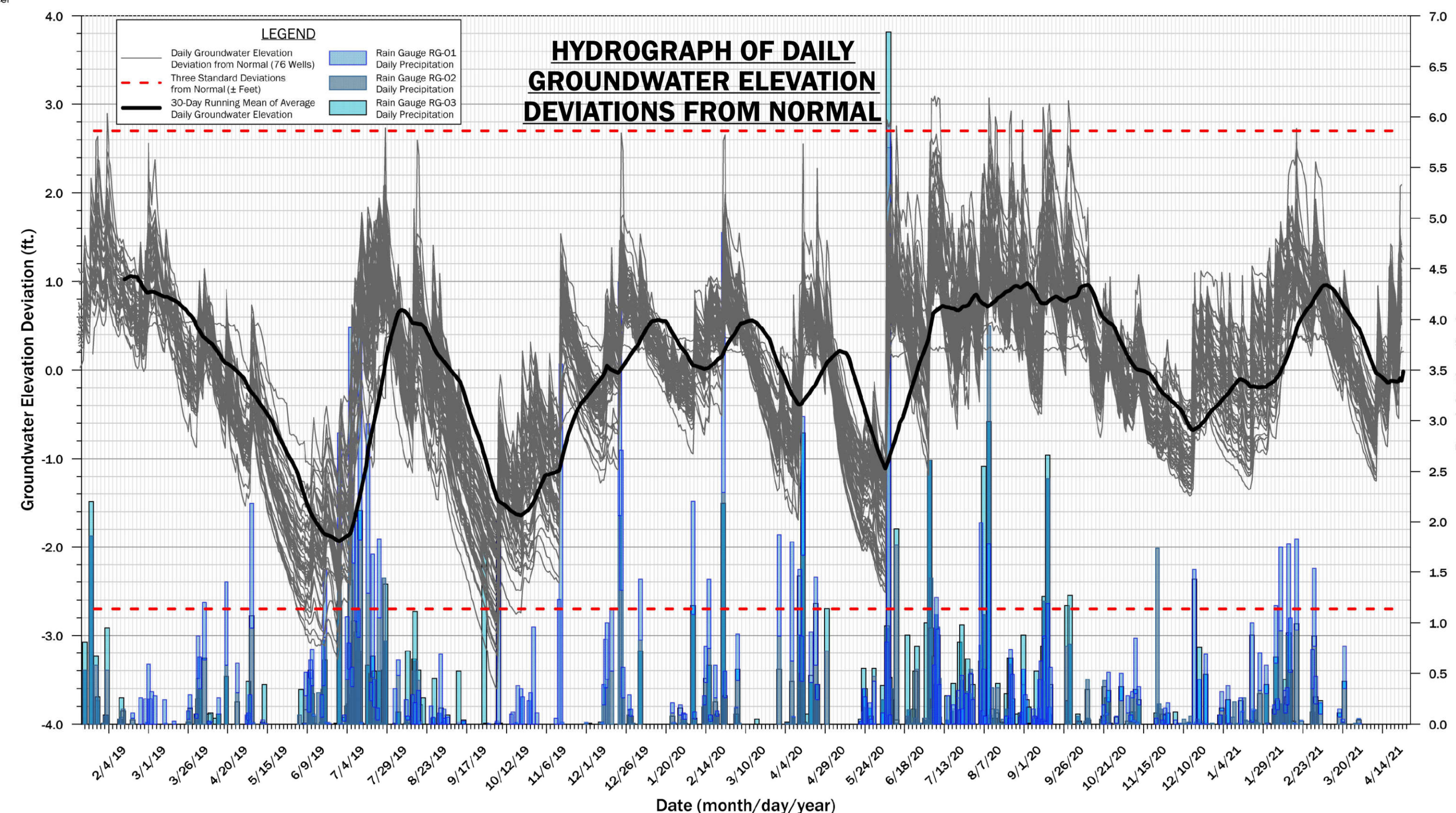
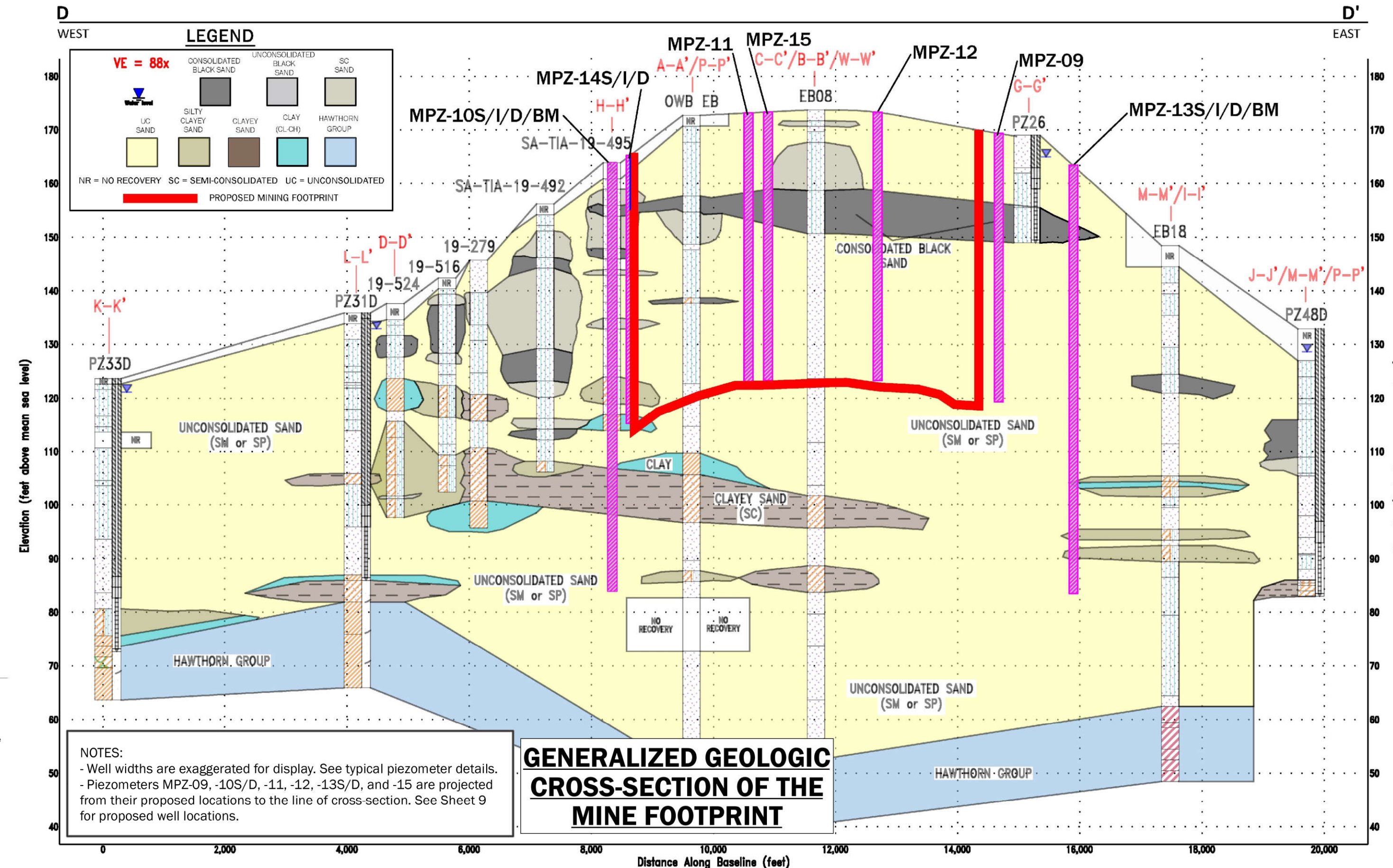
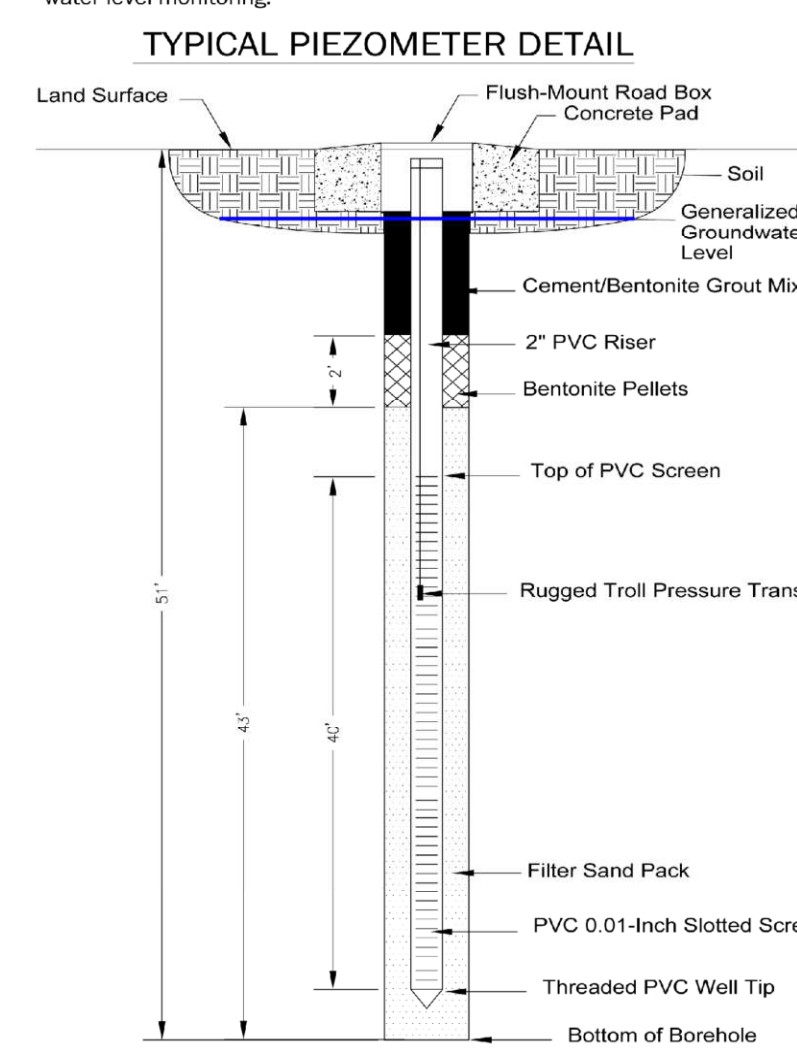


Note: Six piezometers will be installed to depths of about 80 feet below ground surface in order to monitor water levels and water quality of the Surficial Aquifer below the maximum mining depth. These wells will only be used for water quality and water level monitoring.



SURFACE WATER MONITORING TABLE		
ID	ELEVATION	QUALITY
SG02	X	
SG11	X	
SG22	X	
SG24	X	
SG26	X	
SG27	X	
MSW-BG04		X
MSW-BG05		X
MSW-BG06		X

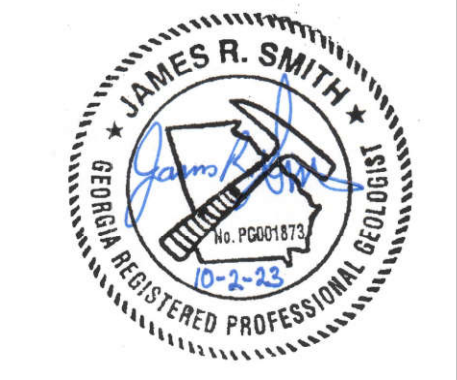
Note: Six piezometers (MPZ-07, MPZ-08, MPZ-09, MPZ-11, MPZ-12 and MPZ-15) will be installed to depths of about 50 feet bgs. The screened interval will be from 10 to 50 feet bgs. These wells will only be used for water level monitoring.



SHEET 13: GROUNDWATER & SURFACE WATER MONITORING PLAN (3)

TWIN PINES MINERALS, LLC SAUNDERS DEMONSTRATION MINE (ID NO. 2073)

ST. GEORGE, CHARLTON COUNTY, GEORGIA



DRAWN BY: DEK
CHECKED BY: JRS
DRAWING DATE: 11/13/2020
REVISION DATE: 10/2/2023
TTL JOB NO.: 18-02-00804.00
APPROX. SCALE: N.T.S.