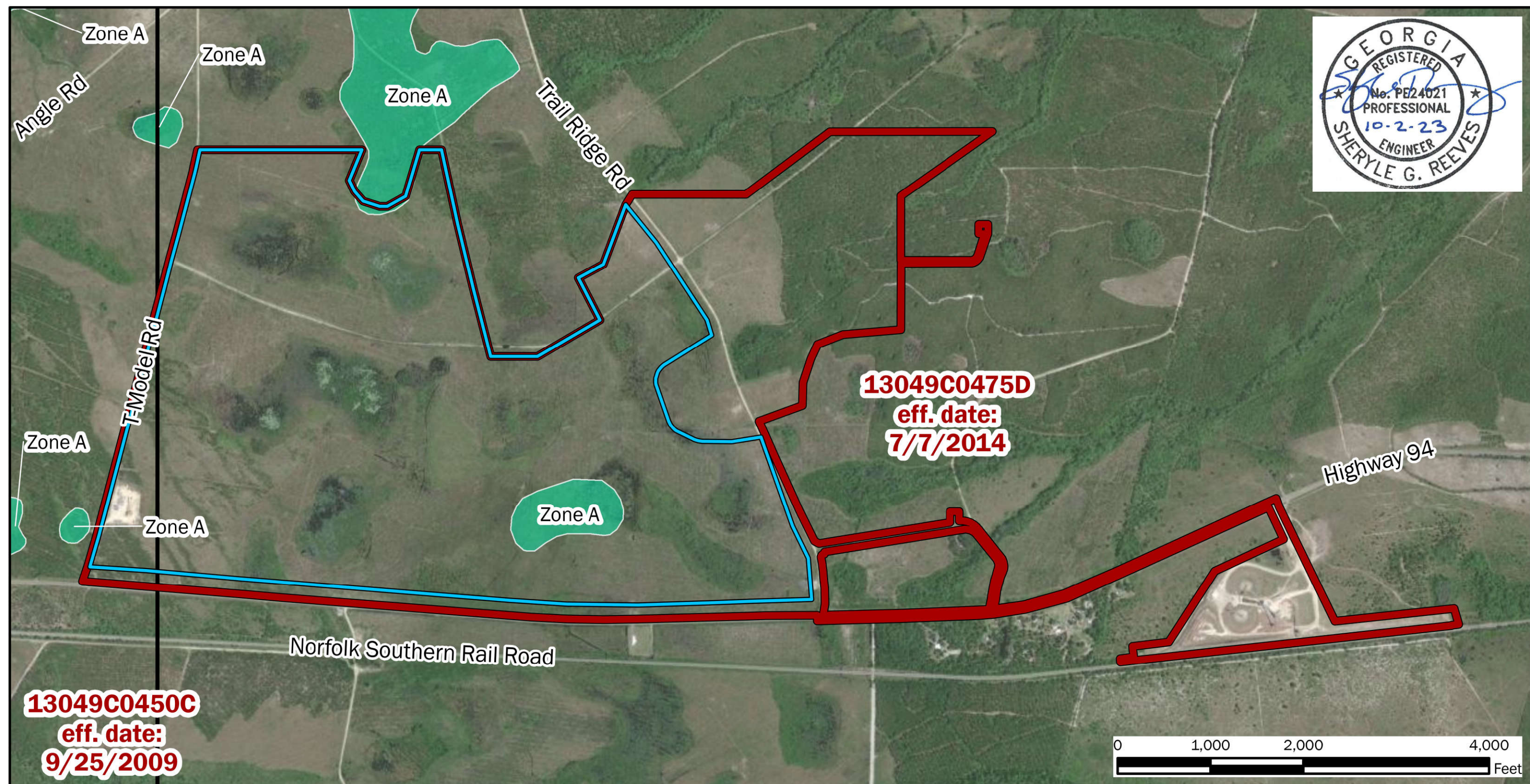
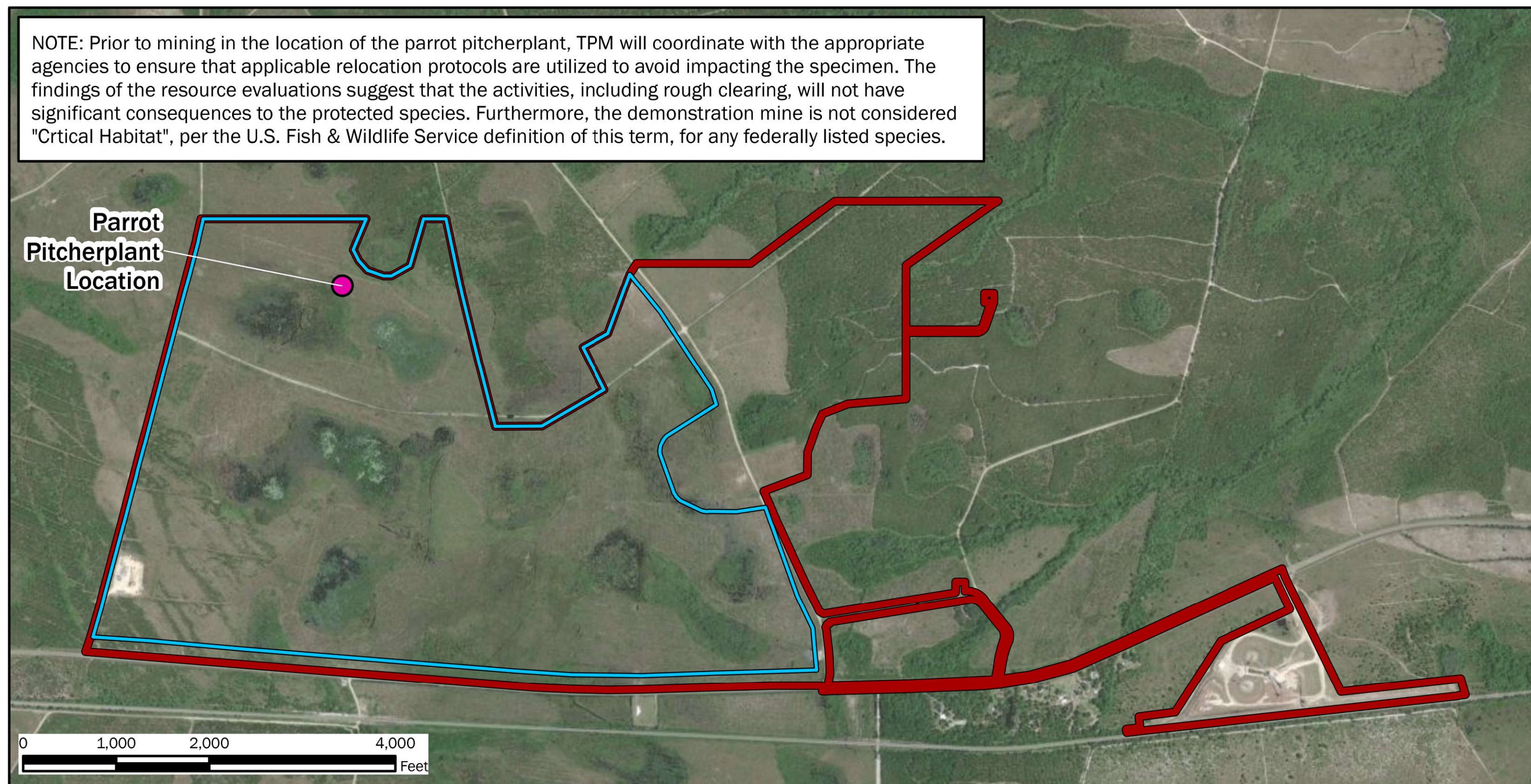


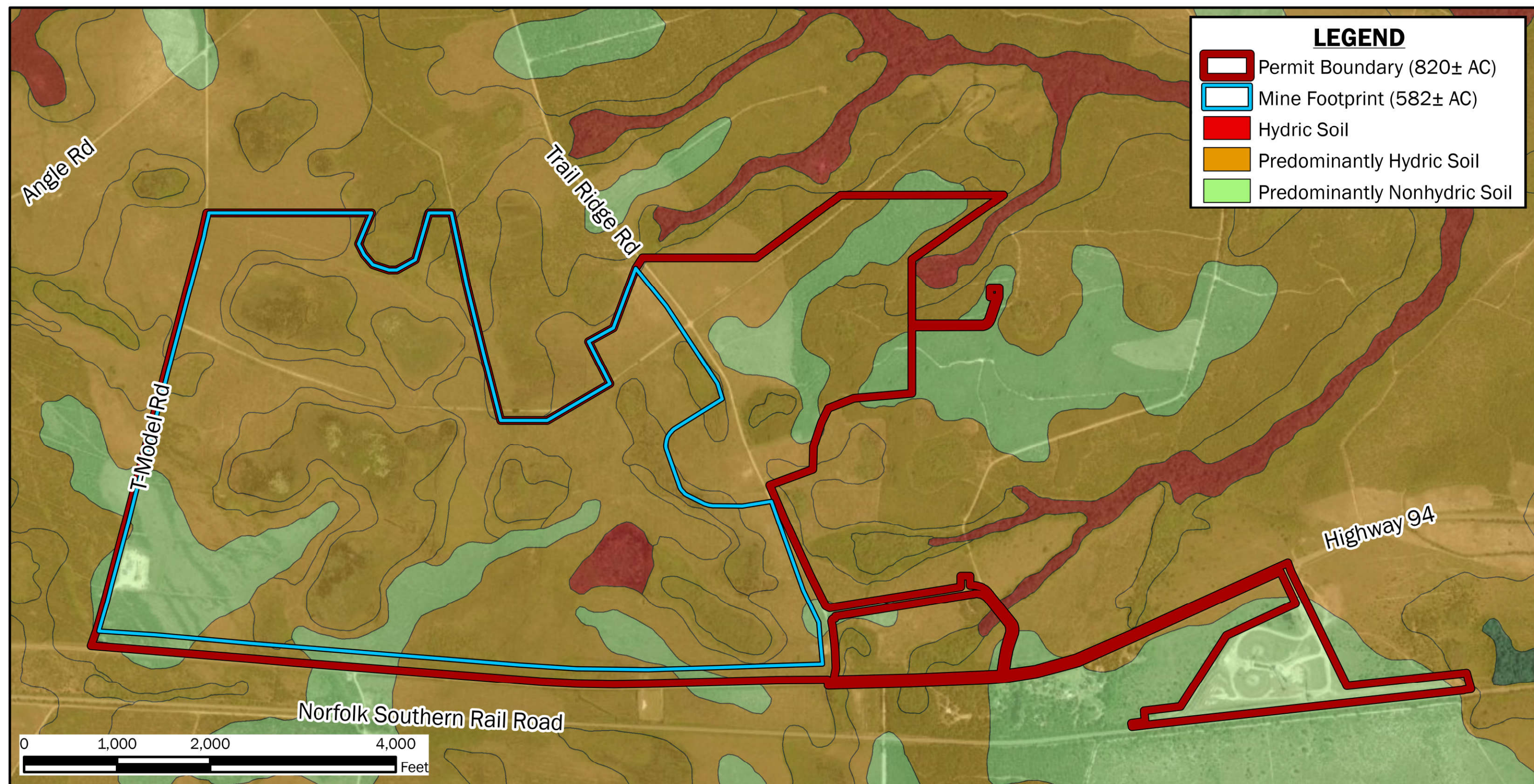
**VICINITY MAP**



**FEMA FLOOD HAZARD MAP**



**THREATENED & ENDANGERED SPECIES LOCATION MAP**



**NRCS HYDRIC SOIL RATING MAP**



**SHEET 14: SUPPLEMENTAL INFORMATION - VICINITY MAP, FEMA FLOOD HAZARD MAP, THREATENED & ENDANGERED SPECIES MAP, NRCS SOILS MAP**  
 TWIN PINES MINERALS, LLC SAUNDERS DEMONSTRATION MINE (ID NO. 2073)  
 ST. GEORGE, CHARLTON COUNTY, GEORGIA

TOPOGRAPHIC BASEMAP: Moniac (W) & Saint George (E), Georgia, USGS 7.5 Minute Quadrangle Map, 2020 (5-ft Contour Interval). AERIAL BASEMAP: Maxar Technologies, Vivid Imagery, 5/7/2021 (0.5 m Resolution).

DRAWN BY: DEK
CHECKED BY: SGR
DRAWING DATE: 11/13/2020
REVISION DATE: 10/2/2023
TTL JOB NO.: 18-02-00804.00
APPROX. SCALE: See Panels